

STATE OF ILLINOIS
DEPARTMENT OF TRANSPORTATION

F.A.U. RTE.	SECTION	COUNTY	TOTAL SHEETS	SHEET NO.
8177	09-00020-00-RS	MORGAN	9	1

CONTRACT NO. 93491

PLANS FOR PROPOSED
SURFACE TRANSPORTATION / URBAN PROGRAM (WARRA)
VILLAGE OF SOUTH JACKSONVILLE
SECTION 09-00020-00-RS

INDEX OF SHEETS

1	COVER SHEET & REQUIRED STANDARDS
2	GENERAL NOTES, LEGEND
3	SUMMARY OF QUANTITIES
4	TYPICAL SECTIONS
5	SCHEDULE OF QUANTITIES
6-8	PLAN SHEETS
9	SPECIAL DETAILS

F.A.U. ROUTE 8178
PROJECT NO ARA-M-5032(028)
EAST VANDALIA ROAD

FROM MAIN STREET
EASTERLY TO KCS RAILROAD
JOB NO C-96-239-09

T 15 N, R 10 W, 3RD PM

- STANDARDS
- 000001-05 STANDARD SYMBOLS, ABBREVIATIONS AND PATTERNS
 - 420001-07 PAVEMENT JOINTS
 - 442201-03 CLASS C AND D PATCHES
 - 701301-03 LANE CLOSURE, 2L, 2W, SHORT TIME OPERATIONS
 - 701311-03 LANE CLOSURE, 2L, 2W MOVING OPERATIONS-DAY ONLY
 - 701501-05 URBAN LANE CLOSURE, 2L, 2W, UNDIVIDED
 - 701901-01 TRAFFIC CONTROL DEVICES
 - 720001-01 SIGN PANEL MOUNTING DETAILS
 - 720006-02 SIGN PANEL ERECTION DETAILS
 - 728001-01 TELESCOPING STEEL SIGN SUPPORT
 - 780001-02 TYPICAL PAVEMENT MARKINGS

- GAS & ELECTRIC**
AMEREN IP
700 JERSEY STREET
QUINCY, ILLINOIS
- CABLE T.V.**
MEDIACOM
409 MASSEY LANE
JACKSONVILLE, ILLINOIS
- TELEPHONE**
VERIZON
330 WEST BEECHER
JACKSONVILLE, ILLINOIS
- WATER & SEWER**
VILLAGE OF SOUTH JACKSONVILLE
MUNICIPAL BUILDING
301 DEWEY DRIVE
SOUTH JACKSONVILLE, ILLINOIS

SECTION 09-00020-00-RS
BEGINS
STA 140+28.00

RAILROAD OMISSION
STA 166+09.00 to
STA 166+19.00

SECTION 09-00020-00-RS
ENDS
STA 166+33.00

DESCRIPTION OF WORK
THIS PROJECT CONSISTS OF RESURFACING EAST VANDALIA ROAD TO PROVIDE A 40' AND VARIABLE WIDE STREET. THE EXISTING HOT-MIX ASPHALT SURFACE WILL BE MILLED AT A VARIABLE DEPTH NEAR THE GUTTER FLAG. THE PROPOSED SURFACE CONSISTS OF 1 1/2" OF HOT-MIX ASPHALT SURFACE OVER A 3/4" AND VARIABLE THICKNESS OF HOT-MIX ASPHALT LEVELING BINDER COURSE.

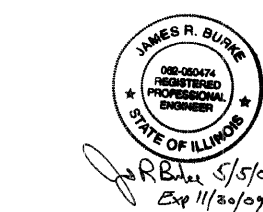


FULL SIZE PLANS HAVE BEEN PREPARED USING STANDARD ENGINEERING SCALES. REDUCED SIZED PLANS WILL NOT CONFORM TO STANDARD SCALES. IN MAKING MEASUREMENTS ON REDUCED PLANS, THE ABOVE SCALES MAY BE USED.

J.U.L.I.E.
JOINT UTILITY LOCATION INFORMATION FOR EXCAVATION
1-800-892-0123 OR 811

DESIGN DESIGNATION
FAU 8178
URBAN COLLECTOR (LAPP)
ADT = 2,880 (2029)
% PV = 88
% SU = 7
% MU = 5

TOTAL LENGTH OF PROJECT = 2,805.00 FEET = 0.531 MILES
NET LENGTH OF PROJECT = 2,795.00 FEET = 0.529 MILES



Hutchison Engineering, Inc.
SINCE 1945
1801 West Lafayette
PO Box 820
Jacksonville, Illinois 62851
PHONE : (217)245-7164 FAX (217)243-0468

APPROVED	<i>[Signature]</i> 5/5/09
VILLAGE PRESIDENT	VILLAGE OF SOUTH JACKSONVILLE
PASSED	May 26, 2009
DISTRICT SIX ENGINEER OF LOCAL ROADS & STREETS	<i>[Signature]</i>
PASSED	May 26, 2009
DISTRICT SIX ENGINEER OF CONSTRUCTION	<i>[Signature]</i>
RELEASING FOR BID BASED ON LIMITED REVIEW	<i>[Signature]</i> 5/24/09
DEPUTY DIRECTOR OF HIGHWAYS, REGION FOUR ENGINEER	STATE OF ILLINOIS DEPARTMENT OF TRANSPORTATION

GENERAL NOTES

1. THE LOCATION OF UNDERGROUND UTILITIES SHOWN ON THE PLANS REPRESENTS THE BEST KNOWLEDGE OF THE VILLAGE AND THE INDICATED ADJUSTMENTS OR RECONSTRUCTION ARE CONSIDERED TO BE REASONABLY ACCURATE. IT SHALL BE THE CONTRACTOR'S RESPONSIBILITY TO VERIFY LOCATIONS OF UNDERGROUND INSTALLATIONS BEFORE STARTING CONSTRUCTION OPERATIONS. THE CONTRACTOR SHALL INDEMNIFY THE VILLAGE, ITS OFFICERS, AND EMPLOYEES AGAINST ALL CLAIMS DUE TO DAMAGE TO CORPORATE OR PRIVATE PROPERTY RESULTING FROM HIS CONSTRUCTION OPERATIONS AS DESCRIBED IN ARTICLE 107.20 AND 107.26 OF THE STANDARD SPECIFICATIONS FOR ROAD AND BRIDGE CONSTRUCTION.
2. THE CONTRACTOR MAY BE REQUIRED TO CONDUCT SOME OF HIS MILLING, PAVING, GRADING OR SHOULDER OPERATIONS AROUND TRANSMISSION POLES AND UNDER TRANSMISSION LINES. THE ADDED COST OF SO DOING SHALL BE INCLUDED WITH THE COST OF THE CONTROLLING PAY ITEM FOR THE OPERATION.
3. WHERE SECTION OR SUB-SECTION MONUMENTS ARE ENCOUNTERED, THE ENGINEER SHALL BE NOTIFIED BEFORE SUCH MONUMENTS ARE REMOVED. THE CONTRACTOR SHALL PROTECT AND PRESERVE PROPERTY MARKERS AND MONUMENTS UNTIL THE OWNER, AN AUTHORIZED SURVEYOR OR AGENT HAS WITNESSED OR OTHERWISE REFERENCED THEIR LOCATION.
4. WHEREVER IN THESE PLANS REFERENCE IS MADE TO THE "STANDARD SPECIFICATIONS", IT IS UNDERSTOOD TO INCLUDE THE "SUPPLEMENTAL SPECIFICATIONS" INCLUDED IN THE PROPOSAL.
5. THE CONTRACTOR WILL BE REQUIRED TO COMPLY WITH ALL STATE REGULATIONS REGARDING AIR, WATER AND NOISE POLLUTION. THE CONTRACTOR WILL NOT BE ALLOWED TO BUILD FIRES ON THE SITE.
6. IT IS THE CONTRACTOR'S RESPONSIBILITY TO ASCERTAIN EXISTING FIELD CONDITIONS BEFORE BIDDING ON THIS PROJECT, SPECIFICALLY AS THEY RELATE TO THE LUMP SUM PAY ITEMS.
7. THE CONTRACTOR SHALL NOTIFY THE AGENCIES AND UTILITIES AT LEAST 10 (TEN) DAYS PRIOR TO ANY CONSTRUCTION IN THE AREA AND SHALL COMPLY WITH ALL RESTRICTIONS FOR EQUIPMENT MOVEMENTS AND CLEARANCES AS REGARDS TO THEIR FACILITIES.
8. BEFORE STARTING ANY EXCAVATION, THE CONTRACTOR MUST CALL J.U.L.I.E. AT 1-800-892-0123 OR 811 FOR FIELD LOCATIONS OF BURIED ELECTRICAL, TELEPHONE, GAS FACILITIES, AND ALL PUBLIC UTILITIES. A 48 HOUR NOTIFICATION IS REQUIRED.
9. VERIFICATION OF DIMENSIONS : IT IS THE CONTRACTOR'S RESPONSIBILITY TO VERIFY ALL DIMENSIONS AND CONDITIONS EXISTING IN THE FIELD PRIOR TO CONSTRUCTION AND ORDERING MATERIALS.
10. THE CONTRACTOR SHALL BE REQUIRED TO PROVIDE ACCESS TO ABUTTING PROPERTY OWNERS AT ALL TIMES DURING CONSTRUCTION OF THE PROJECT.
11. DURING CONSTRUCTION OPERATIONS, IF ANY LOOSE MATERIAL IS DEPOSITED IN THE FLOW LINE OF DITCHES, GUTTERS OR DRAINAGE STRUCTURES SO THAT THE NATURAL FLOW OF WATER IS OBSTRUCTED, IT SHALL BE REMOVED AT THE CLOSE OF EACH WORKING DAY. AT THE CONCLUSION OF CONSTRUCTION OPERATIONS, ALL DRAINAGE STRUCTURES SO AFFECTED SHALL BE FREE FROM ALL DEBRIS. THIS WORK SHALL BE CONSIDERED INCLUDED IN THE COST OF THE CONTRACT.
12. ALL FRAMES, GRATES, SIGNS, FENCES AND DELINEATORS, DRIVEWAY PAVEMENT, CURB AND GUTTER, NEW OR EXISTING, DAMAGED THROUGH CONTRACTOR'S NEGLIGENCE DURING CONSTRUCTION SHALL BE REPLACED BY THE CONTRACTOR AT HIS EXPENSE.
13. THE COST OF ADDITIONAL LABOR AND MATERIALS NOT ACCOUNTED FOR ON THE PLANS, WHICH MIGHT BE INVOLVED IN MAINTAINING THE FLOW OF STORM WATER TO EXISTING DRAINAGE STRUCTURES, SHALL BE INCLUDED IN THE COST OF THE CONTROLLING PAY ITEM FOR THE OPERATION.
14. THE FOLLOWING MIXTURE REQUIREMENTS ARE APPLICABLE FOR THIS PROJECT:

MIXTURE USES	HMA SURF CSE	LEVELING BINDER, (MM)
AC/PG	PG 64-22	PG 64-22
DESIGN AIR VOIDS	4% @ N50	4% @ N50
MIX COMPOSITION: (GRADATION MIXTURE)	IL-9.5 OR 12.5	IL-9.5
FRICION AGGREGATE	MIX "C"	N/A

HMA QUANTITIES CALCULATED USING 112 LB/SY/IN

LEGEND

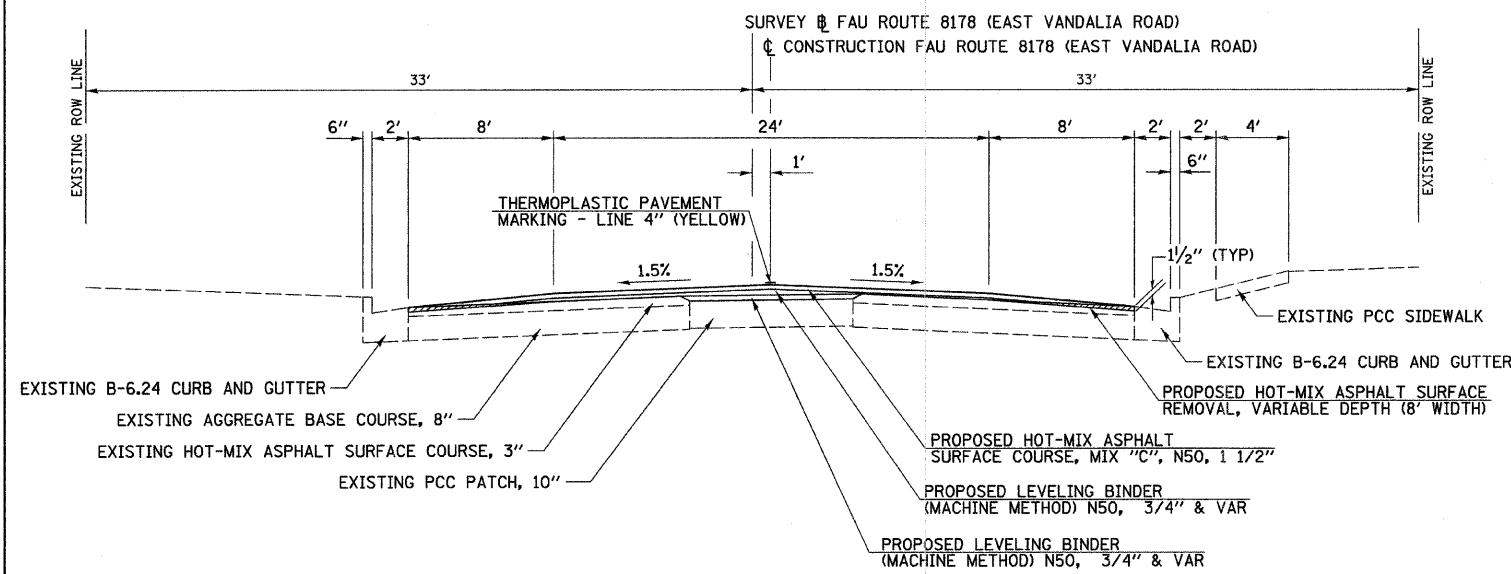
- HOT-MIX ASPHALT SURFACE REMOVAL - BUTT JOINT
- 8" PAVEMENT PATCHING, TYPE, SQ YD

FILE NAME = VA\2713\27130801.dgn	USER NAME = rrusnell	DESIGNED - JRB	REVISED -	STATE OF ILLINOIS DEPARTMENT OF TRANSPORTATION	EAST VANDALIA ROAD (FAU ROUTE 8178) GENERAL NOTES AND LEGEND	F.A.U. RTE. 8178	SECTION 09-00020-00-RS	COUNTY MORGAN	TOTAL SHEETS 9	SHEET NO. 2
PLOT SCALE = 1.0000' / IN.		CHECKED - JRB	REVISED -	SCALE: N/A		SHEET NO. 1 OF 1 SHEETS		STA. N/A TO STA. N/A		CONTRACT NO. 093491
PLOT DATE = 5/5/2009		DATE - 2009	REVISED -	ILLINOIS FED. AID PROJECT						

SCHEDULE OF QUANTITIES
ITEM

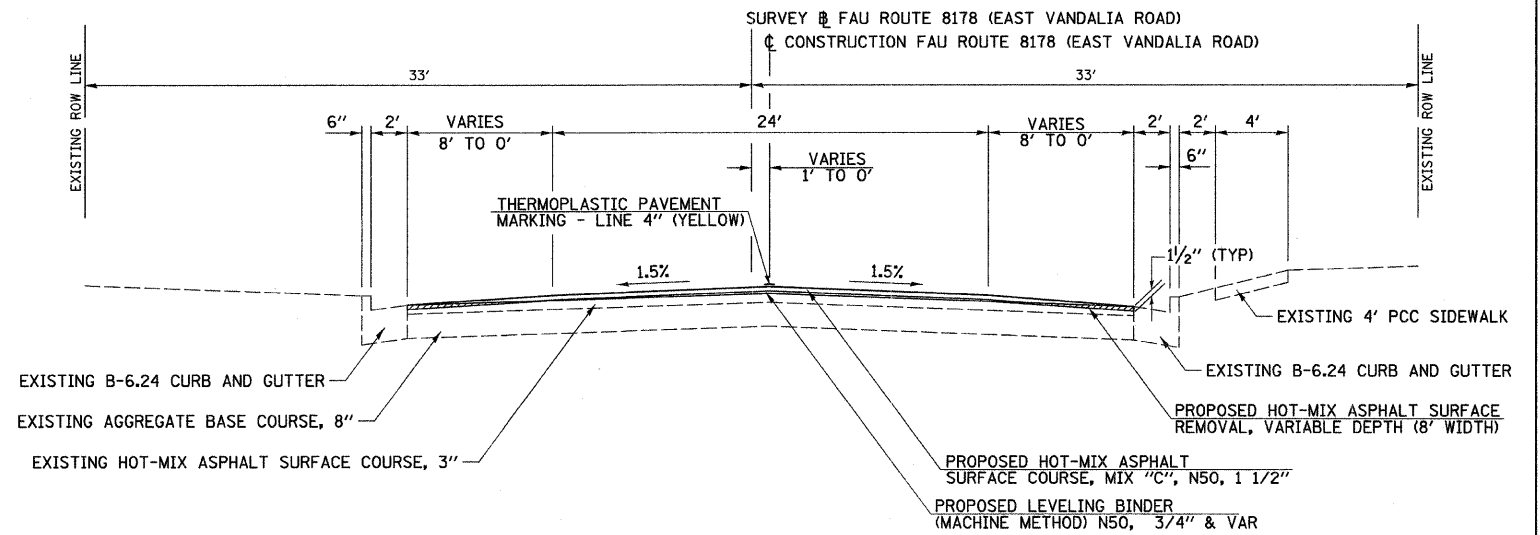
CODE NO.	ITEM	UNIT	TOTAL
40600100	BITUMINOUS MATERIALS (PRIME COAT)	GALLON	1,753
40600300	AGGREGATE (PRIME COAT)	TON	1
40600625	LEVELING BINDER (MACHINE METHOD), N50	TON	388
40600895	CONSTRUCTING TEST STRIP	EACH	2
40600982	HOT-MIX ASPHALT SURFACE REMOVAL - BUTT JOINT	SQ YD	321
40600990	TEMPORARY RAMP	SQ YD	84
40603310	HOT-MIX ASPHALT SURFACE COURSE, MIX "C", N50	TON	1,221
44000198	HOT-MIX ASPHALT SURFACE REMOVAL, VARIABLE DEPTH	SQ YD	5,220
44201341	CLASS C PATCHES, TYPE II, 9 INCH	SQ YD	99
44201345	CLASS C PATCHES, TYPE III, 9 INCH	SQ YD	90
44201347	CLASS C PATCHES, TYPE IV, 9 INCH	SQ YD	199
44300200	STRIP REFLECTIVE CRACK CONTROL TREATMENT	FOOT	4,000
48101200	AGGREGATE SHOULDERS, TYPE B	TON	27
60255500	MANHOLES TO BE ADJUSTED	EACH	9
60266600	VALVE BOXES TO BE ADJUSTED	EACH	14
67100100	MOBILIZATION	L SUM	1
70103700	TRAFFIC CONTROL COMPLETE	L SUM	1
70300100	SHORT-TERM PAVEMENT MARKING	FOOT	1,121
70300210	TEMPORARY PAVEMENT MARKING - LETTERS AND SYMBOLS	SQ FT	159
70300220	TEMPORARY PAVEMENT MARKING - LINE 4"	FOOT	2,884
70300240	TEMPORARY PAVEMENT MARKING - LINE 6"	FOOT	113
70300260	TEMPORARY PAVEMENT MARKING - LINE 12"	FOOT	115
70300280	TEMPORARY PAVEMENT MARKING - LINE 24"	FOOT	187
70301000	WORK ZONE PAVEMENT MARKING REMOVAL	SQ FT	2,035
72000100	SIGN PANEL - TYPE 1	SQ FT	15
72800100	TELESCOPING STEEL SIGN SUPPORT	FOOT	30
78000100	THERMOPLASTIC PAVEMENT MARKING - LETTERS & SYMBOLS	SQ FT	32
78000200	THERMOPLASTIC PAVEMENT MARKING - LINE 4"	FOOT	2,884
78000400	THERMOPLASTIC PAVEMENT MARKING - LINE 6"	FOOT	113
78000600	THERMOPLASTIC PAVEMENT MARKING - LINE 12"	FOOT	115
78000650	THERMOPLASTIC PAVEMENT MARKING - LINE 24"	FOOT	27
78004200	PREFORMED PLASTIC PAVEMENT MARKING, TYPE B - INLAID - LETTERS AND SYMBOLS	SQ FT	127
78004280	PREFORMED PLASTIC PAVEMENT MARKING, TYPE B - INLAID - LINE 24"	FOOT	160
Z0048665	RAILROAD PROTECTIVE LIABILITY INSURANCE	L SUM	1

• SEE SPECIAL PROVISIONS
NOTE: ALL ITEMS ARE UNDER CONSTRUCTION TYPE CODE I000
Δ SPECIALTY ITEMS



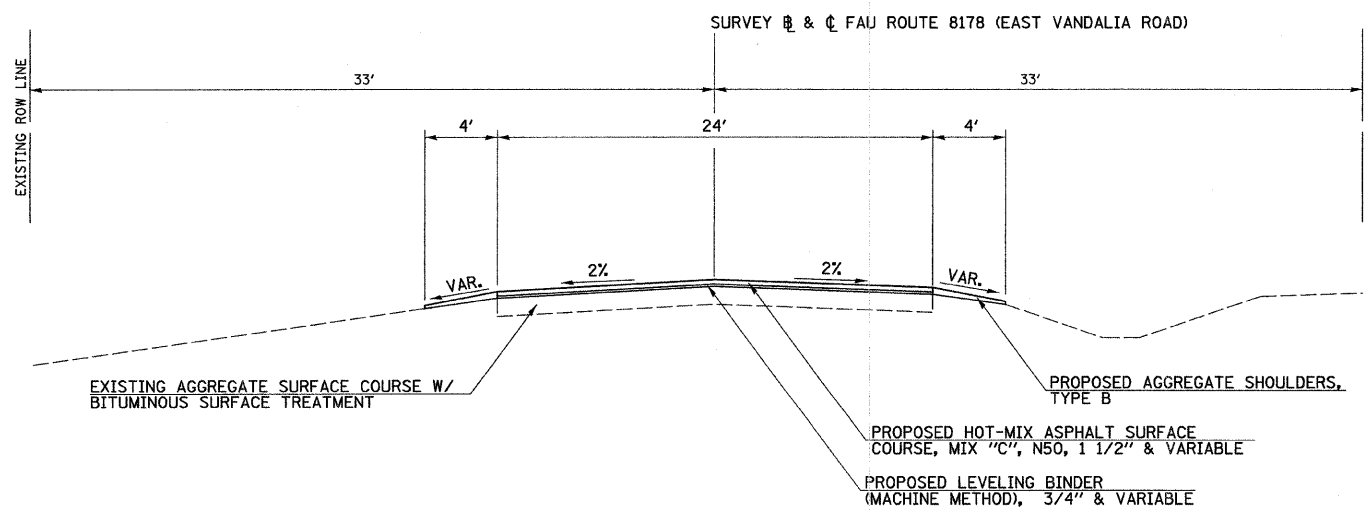
**PROPOSED TYPICAL SECTION
EAST VANDALIA ROAD**

① STA 140+28.00 TO STA 164+79.91



**PROPOSED TYPICAL SECTION
EAST VANDALIA ROAD**

② STA 164+79.91 TO STA 166+09.00
RAILROAD CROSSING OMISSION
STA 166+09.00 TO STA 166+19.00



PROPOSED TYPICAL SECTION

③ STA 166+19.00 TO STA 168+33.00

FILE NAME =
VA\2713\27137882.dgn

USER NAME = rrusell
PLOT SCALE = 5.0000' / IN.
PLOT DATE = 5/5/2009

DESIGNED - JRB
DRAWN - RLR
CHECKED - JRB
DATE - 3-11-09

REVISED -
REVISED -
REVISED -
REVISED -

**STATE OF ILLINOIS
DEPARTMENT OF TRANSPORTATION**

**EAST VANDALIA ROAD (FAU ROUTE 8178)
PROPOSED TYPICAL SECTIONS**

SCALE: N/A SHEET NO. 1 OF 1 SHEETS STA. N/A TO STA. N/A

F.A.U. RTE.	SECTION	COUNTY	TOTAL SHEETS	SHEET NO.
8178	09-00020-00-RS	MORGAN	9	4
CONTRACT NO. 3491				
ILLINOIS FED. AID PROJECT				

MANHOLES TO BE ADJUSTED

STATION	SIDE	ADJUSTING MANHOLES EACH
141+71	CL	1
144+87	RT	1
148+00	RT	1
151+10	RT	1
152+52	RT	1
156+76	RT	1
161+13	RT	1
162+95	RT	1
163+24	RT	1
PROJECT TOTAL		9
USE		9

VALVE BOXES TO BE ADJUSTED

STATION	SIDE	ADJUSTING VALVE BOXES
		EACH
140+73	LT	1
144+66	LT	1
144+72	RT	2
144+83	LT	1
144+90	LT	1
145+21	LT	1
145+33	LT	1
150+88	LT	1
151+37	LT	1
155+43	LT	1
161+43	LT	1
164+05	LT	1
164+77	LT	1
PROJECT TOTAL		14
USE		14

PATCHING SCHEDULE

STATION	LOCATION	LENGTH	WIDTH	CLASS C PATCHES, TYPE II, 8 INCH	CLASS C PATCHES, TYPE III, 8 INCH	CLASS C PATCHES, TYPE IV, 8 INCH
		FOOT	FOOT	SQ YD		
140+53.0	LT	10.0	7.0	7.8		
140+70.0	LT & RT	10.0	20.0		22.2	
141+05.0	LT	15.0	11.0		18.3	
142+85.0	LT	35.0	4.0		15.6	
142+85.0	RT	35.0	4.0		15.6	
144+85.0	LT	29.7	21.0			69.3
144+85.0	RT	29.7	21.0			69.3
146+20.0	LT & RT	20.0	8.0		17.8	
149+00.0	LT & RT	60.0	9.0			60.0
150+95.0	LT & RT	8.0	12.0	10.7		
152+73.0	LT	5.0	20.0	11.1		
152+73.0	RT	5.0	20.0	11.1		
156+75.0	LT	3.0	20.0	6.7		
156+75.0	RT	3.0	20.0	6.7		
162+95.0	LT	4.0	20.0	8.9		
162+95.0	RT	4.0	20.0	8.9		
163+24.0	RT	10.0	8.0	8.9		
164+75.0	LT	4.0	20.0	8.9		
164+75.0	RT	4.0	20.0	8.9		
PROJECT TOTAL				98.6	89.5	198.6
USE				99	90	199

SIDE STREET SCHEDULE

LOCATION	SIDE	HOT-MIX ASPHALT SURFACE REMOVAL, VARIABLE DEPTH	HOT-MIX ASPHALT SURFACE COURSE, MIX "C", N50	AGGREGATE (PRIME COAT)	BITUMINOUS MATERIALS (PRIME COAT)
		SQ YD	TON	TON	GALLON
SOUTH EAST STREET	LT	81.3	8.0		6.1
SOUTH EAST STREET	RT	81.3	8.0		6.1
SOUTH CLAY AVENUE	LT	103.5	10.1		7.8
SOUTH CHILTON AVENUE	LT	76.9	7.5		5.8
HARDIN AVENUE	LT	90.2	8.8		6.8
LAKEVIEW TERRACE	LT	72.4	7.1		5.4
GIBSON DRIVE	RT	117.3	14.0		8.8
KIWANIS DRIVE	LT	16.2	16.2	0.4	51.1
HOLKENBRINK DRIVE	RT	207.4	24.7	0.5	77.8
PROJECT TOTAL		830.3	104.4	0.9	175.6
USE		831	105	1	176

PAVEMENT SCHEDULE

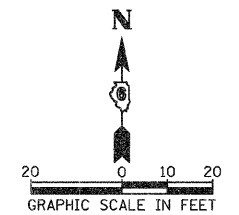
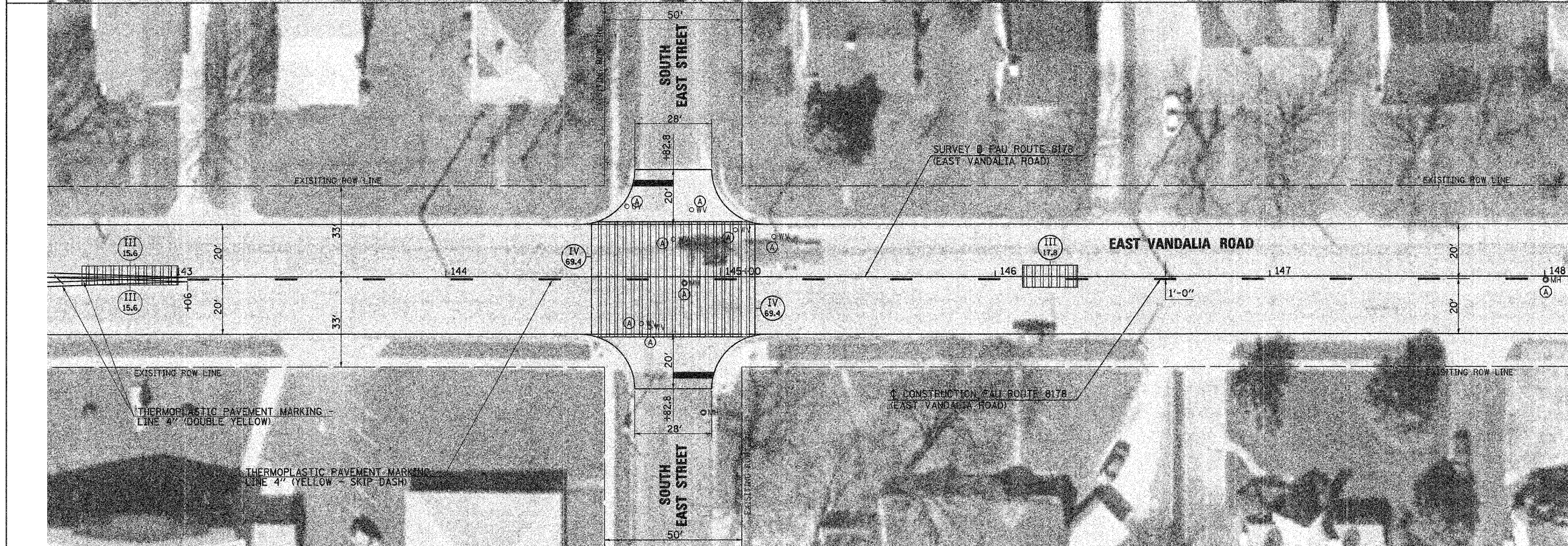
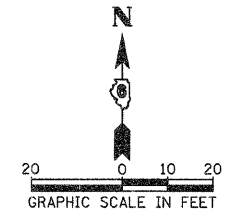
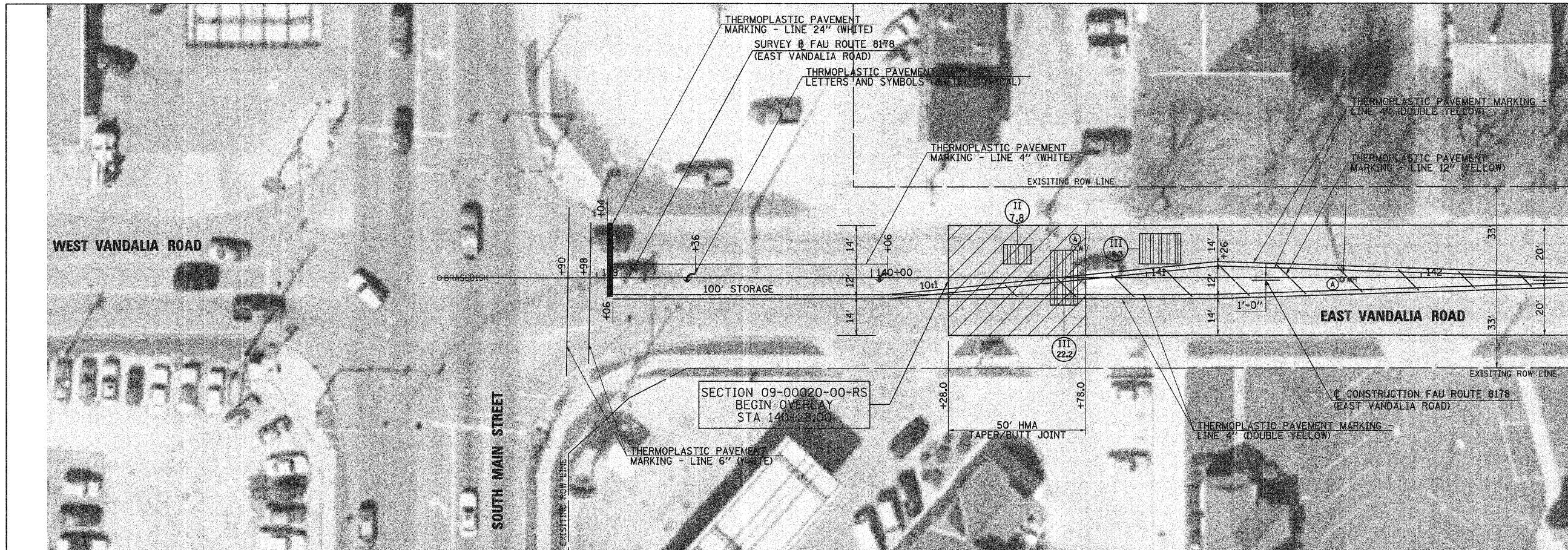
STATION TO STATION	SIDE	HOT-MIX ASPHALT SURFACE REMOVAL, VARIABLE DEPTH	LEVELING BINDER (MACHINE METHOD) N50	HOT-MIX ASPHALT SURFACE COURSE, MIX "C", N50	AGGREGATE SHOULDERS, TYPE B	BITUMINOUS MATERIALS (PRIME COAT)	TEMPORARY RAMPS	HOT-MIX ASPHALT SURFACE REMOVAL - BUTT JOINT
		SQ YD	TON	TON	GALLON	SQ YD		
140+28.0 TO 140+78.0	LT & RT			24.1		8.3	29.8	111.1
140+78.0 TO 165+09.0	LT & RT	4321.8	363.0	998.3		1459.3		
165+09.0 TO 165+59.0	LT & RT	66.7	7.5	18.5		28.4		
165+59.0 TO 166+09.0	LT & RT			18.5		15.0	17.9	76.6
166+19.0 TO 166+69.0	LT & RT			15.9	6.5	10.0	17.9	66.7
166+69.0 TO 167+83.0	LT & RT		17.0	25.5	14.1	45.6		
167+83.0 TO 168+33.0	LT & RT			14.5	5.8	10.0	17.9	66.7
PROJECT TOTAL		4,388.5	387.5	1115.3	26.4	1576.7	83.5	321.0
USE		4,389	388	1,116	27	1577	84	321

PAVEMENT MARKING SCHEDULE

LOCATION	SIDE	THERMOPLASTIC						PERFORMED		
		4" SKIP-DASH, YELLOW	4" SOLID, WHITE	4" SOLID, YELLOW	6" SOLID, WHITE	12" SOLID, YELLOW	24" SOLID, WHITE	LETTERS & SYMBOLS	LETTERS & SYMBOLS	24" SOLID, WHITE
		FOOT						SQ FT		FOOT
EAST VANDALIA AVENUE										
138+90 TO 139+06	LT & RT				112.4		27.0			
139+06 TO 140+06	LT & RT		100.0	200.0				31.2		
140+06 TO 143+06	LT & RT			1201.6		114.4				
143+06 TO 163+94	CL	522.0								
163+94 TO 166+09	LT & RT			430.1				63.5	36.0	
166+09 TO 168+33	LT & RT			430.3				63.5	36.0	
SOUTH EAST ST.	LT								14.0	
SOUTH EAST ST.	RT								14.0	
SOUTH CLAY AVE.	LT								19.0	
SOUTH CHILTON AVE.	LT								13.0	
HARDIN AVE.	LT								16.0	
LAKEVIEW TERRACE	LT								12.0	
PROJECT TOTAL		522	100	2262	112.4	114.4	27	31.2	127	160
USE		2884			113	115	27	32	127	160

STRIP REFLECTIVE CRACK CONTROL TREATMENT

STATION TO STATION	OFFSET	LENGTH FEET
140+00 TO 160+35	10' LT	2035
140+50 TO 140+50	20' LT TO 20' RT	40
141+70	20' LT TO 20' RT	40
143+05	20' LT TO 20' RT	40
143+65	20' LT TO 20' RT	40
146+20	20' LT TO 20' RT	40
148+10	20' LT TO 20' RT	40
149+65 TO 158+50	10' RT	885
149+85	20' LT & RT	40
151+12 TO 155+45	CL	433
152+05	20' LT & RT	40
153+50	20' LT & RT	40
154+85	20' LT & RT	40
155+45	20' LT & RT	40
157+53	20' LT & RT	40
158+85	20' LT & RT	40
160+85	20' LT & RT	40
163+81	20' LT & RT	40
TOTAL		3953
USE		4000



FILE NAME = VA\2713\EV\ev1.dgn
 USER NAME = rrussell

DESIGNED - JRB
 DRAWN - RLR
 CHECKED - JRB
 DATE - 2009

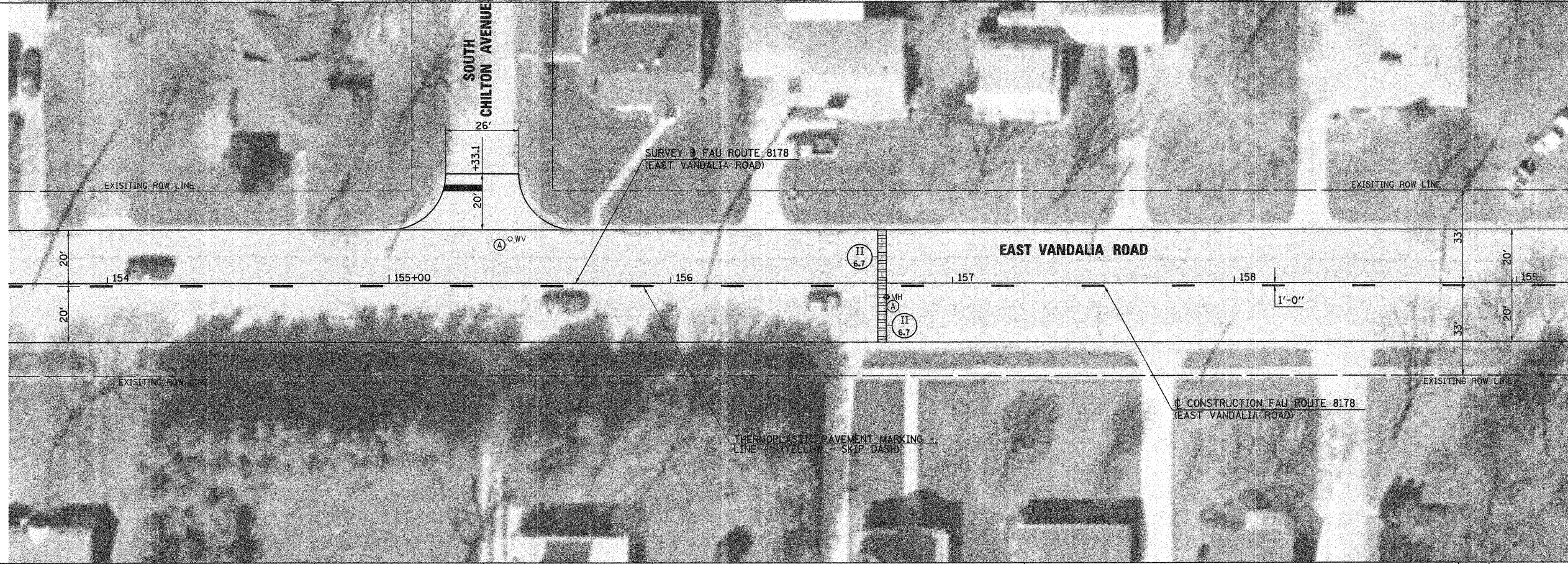
REVISED -
 REVISED -
 REVISED -
 REVISED -

**STATE OF ILLINOIS
 DEPARTMENT OF TRANSPORTATION**

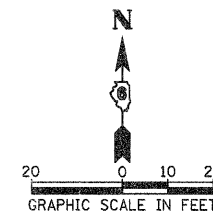
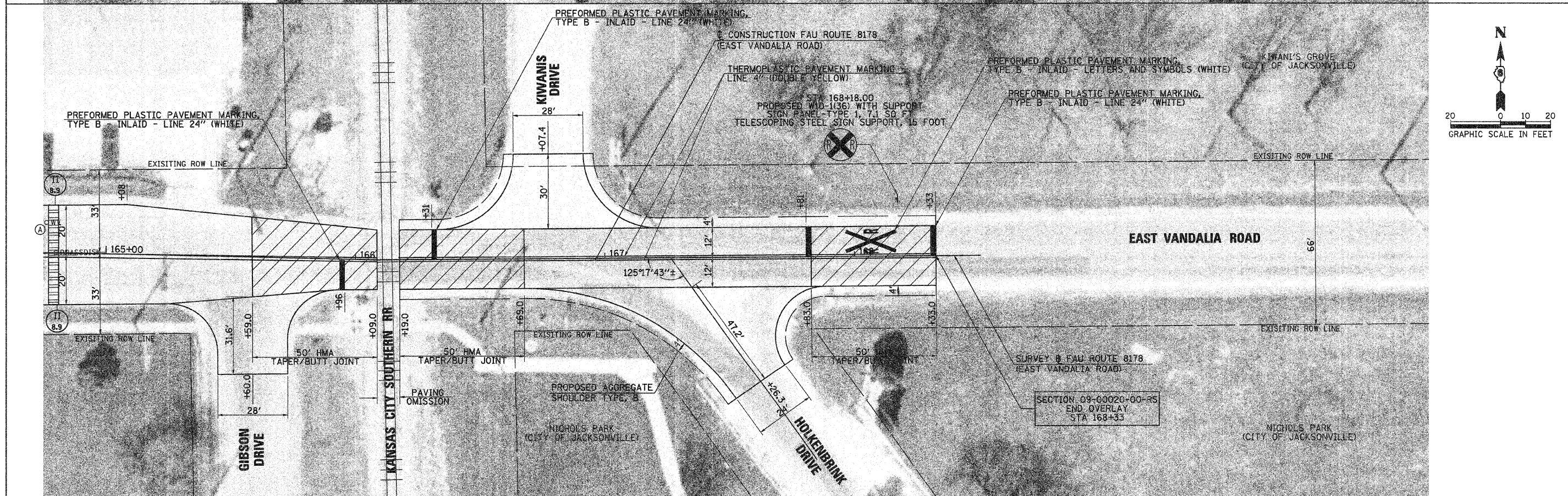
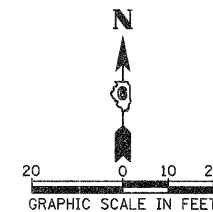
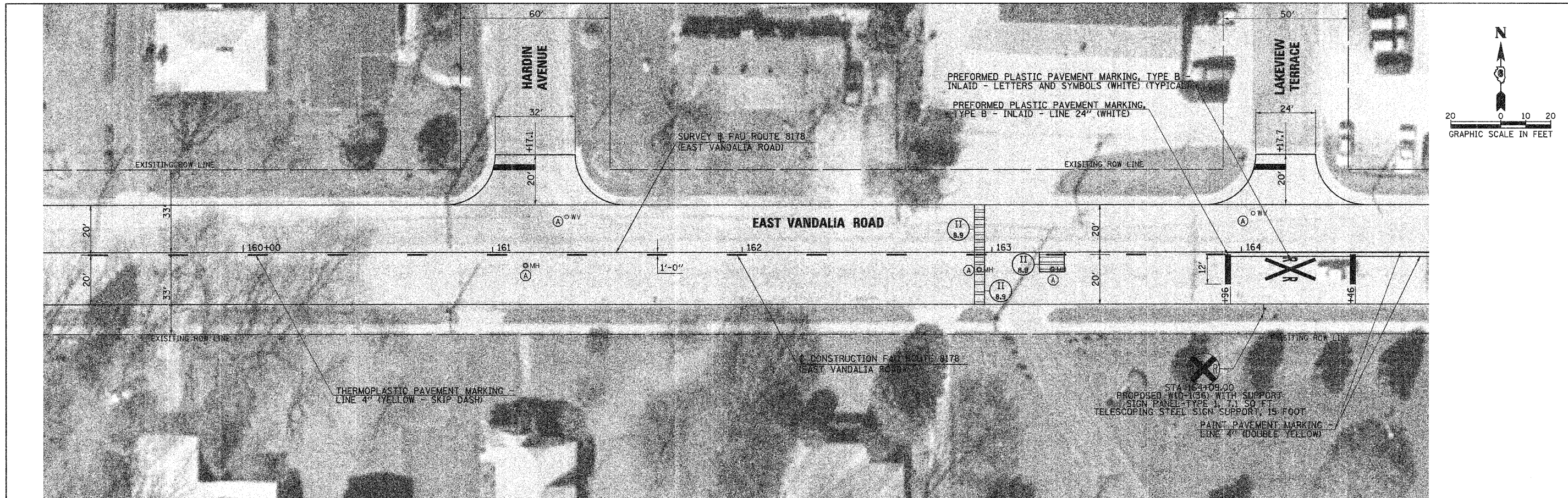
**EAST VANDALIA ROAD (FAU ROUTE 8178) PROPOSED PLAN
 STA 140+28.00 TO STA 148+00.00**

SCALE: 1" = 20' SHEET NO. 1 OF 3 SHEETS STA. 140+28 TO STA. 148+00.00

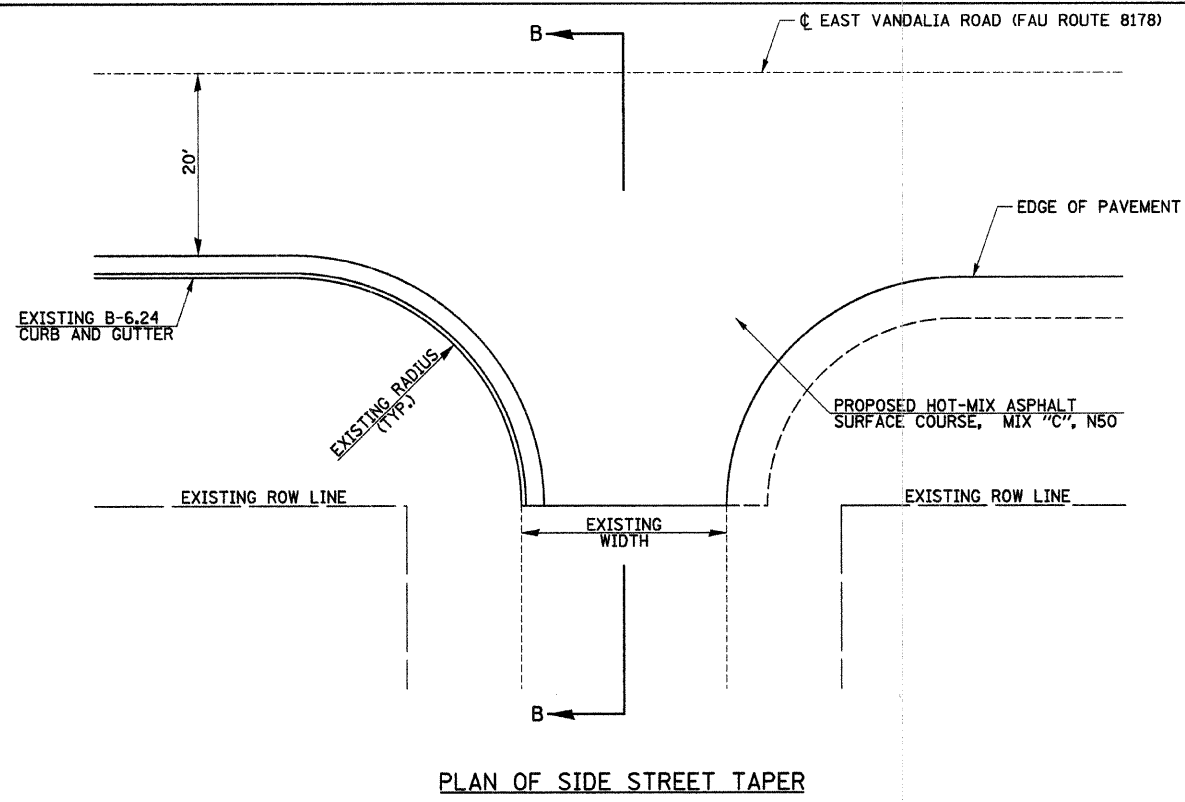
F.A.S. RTE.	SECTION	COUNTY	TOTAL SHEETS	SHEET NO.
8178	09-00020-00-RS	MORGAN	9	6
				CONTRACT NO. 93491
ILLINOIS FED. AID PROJECT				



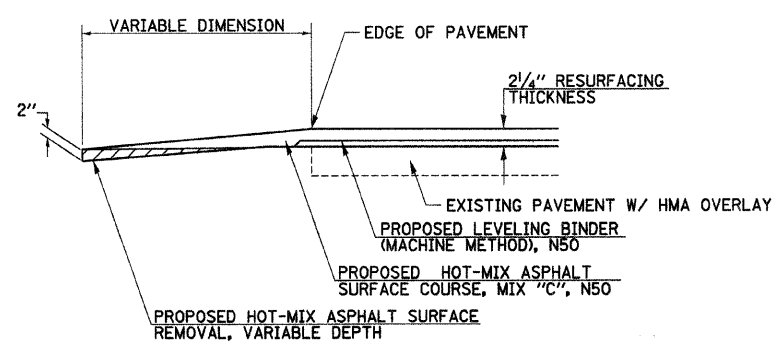
FILE NAME = V:\2713\VEN2.dgn	USER NAME = rrusell	DESIGNED - JRB	REVISED -	STATE OF ILLINOIS DEPARTMENT OF TRANSPORTATION	EAST VANDALIA ROAD (FAU 8178) PROPOSED PLAN STA 148+00.00 TO STA 159+00.00			F.A.S. RTE. 8178	SECTION 09-00020-00-RS	COUNTY MORGAN	TOTAL SHEETS 9	SHEET NO. 7	
	PLOT SCALE = 20,0000' / IN.	CHECKED - JRB	REVISED -		SCALE: 1" = 20'	SHEET NO. 2 OF 3 SHEETS	STA. 148+00 TO STA. 159+00	CONTRACT NO. 93491					
	PLOT DATE = 5/5/2009	DATE - 2009	REVISED -		ILLINOIS FED. AID PROJECT								



FILE NAME = V:\2713\EVen3.dgn	USER NAME = rrussell	DESIGNED - JRB	REVISED -	STATE OF ILLINOIS DEPARTMENT OF TRANSPORTATION	EAST VANDALIA ROAD (FAU ROUTE 8178) PROPOSED PLAN		F.A.U. RTE.	SECTION	COUNTY	TOTAL SHEETS	SHEET NO.	
	PLOT SCALE = 20.0000' / IN.	CHECKED - JRB	REVISED -		STA 159+00.00 TO STA 168+33.00		8178	09-00020-00-RS	MORGAN	9	8	
	PLOT DATE = 5/5/2009	DATE - 2009	REVISED -		SCALE: 1" = 20'		SHEET NO. 3 OF 3 SHEETS		STA. STA 159+00 TO STA. 168+33		CONTRACT NO. 09-3491	
	ILLINOIS FED. AID PROJECT											

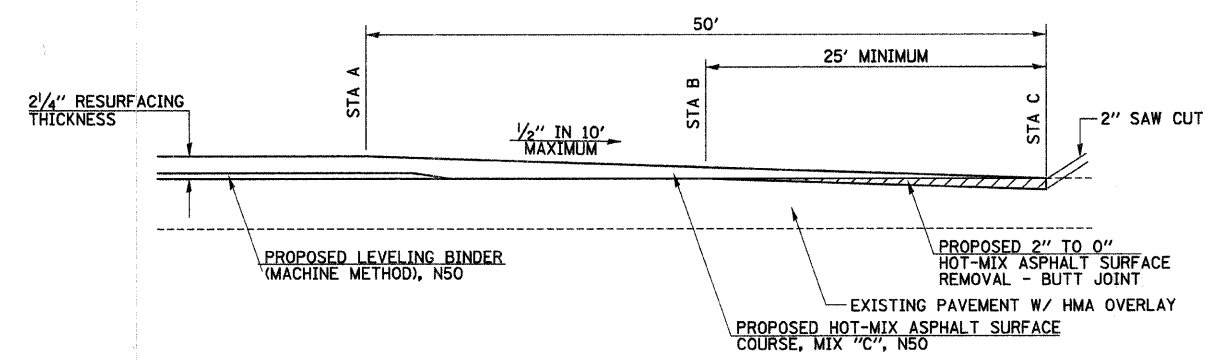


PLAN OF SIDE STREET TAPER



SECTION B-B
PROPOSED SIDEROAD TAPER

SIDE STREET DETAIL



STA A	STA B	STA C
140+78	140+53	140+28
165+59	165+84	166+09
166+69	166+44	166+19
167+83	168+08	168+33

HMA TAPER/BUTT JOINT DETAIL