

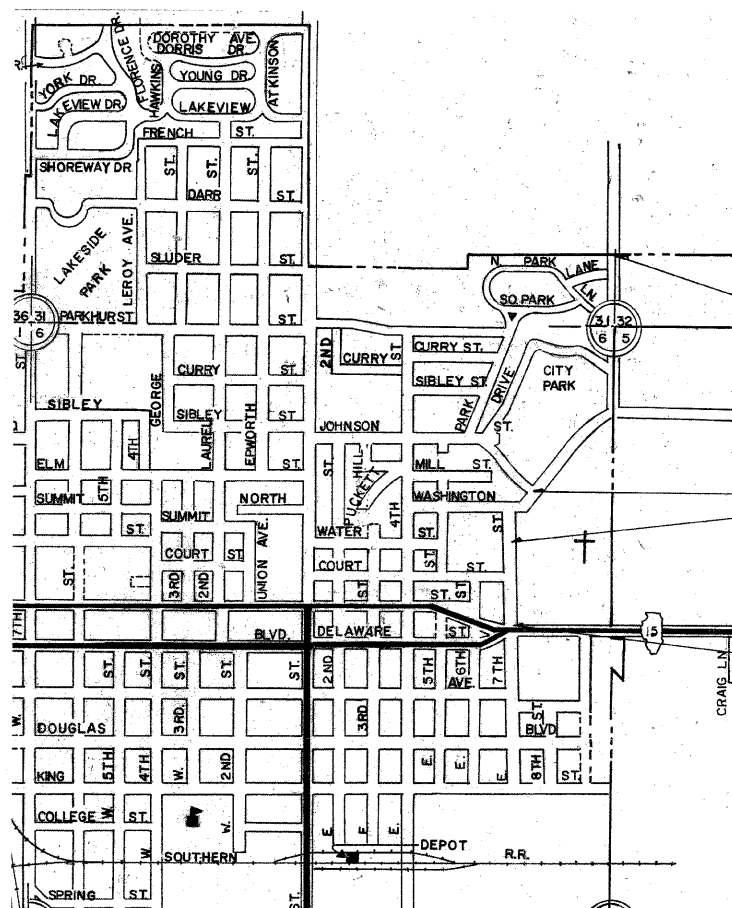
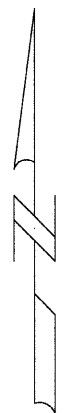
INDEX OF SHEETS

- 1 COVER SHEET
- 2 SUMMARY OF QUANTITIES & TYPICAL SECTIONS
- 2 TYPICAL SECTIONS
- 3 PLAN VIEW STA. 0+00 TO STA. 15+00
- 4 PLAN VIEW STA. 15+00 TO STA. 38+35
- 5 INTERSECTION DETAILS STA. 0+20.72
- 6 INTERSECTION DETAILS STA. 22+32

STANDARDS:

| | |
|-----------|--------------------------------------|
| 420001-07 | PAVEMENT JOINTS |
| 420701-02 | PAVEMENT FABRIC |
| 442001-04 | CLASS A PATCHES |
| 442201-03 | CLASS D PATCHES |
| 602306-02 | INLET, TYPE B |
| 604006-04 | FRAME & GRATE, TYPE 3 |
| 606001-04 | CONC. CURB TY. B & COMB. CONC. C & G |
| 701201-03 | TRAFFIC CONTROL |
| 701701-06 | TRAFFIC CONTROL |
| 701901-01 | TRAFFIC CONTROL DEVICES |
| 780001-02 | PAVEMENT MARKINGS |
| BLR 21-8 | TRAFFIC CONTROL |
| BLR 22-6 | TRAFFIC CONTROL |

STATE OF ILLINOIS
DEPARTMENT OF TRANSPORTATION
DIVISION OF HIGHWAYS
PLANS FOR PROPOSED
SURFACE TRANSPORTATION URBAN PROJECT
CITY OF FAIRFIELD
WAYNE COUNTY
SECTION 06-00046-00-RS
N.E. SEVENTH STREET AND ENTERPRISE ROAD
PROJECT M-5022(010)
JOB NO. C-97-076-09



DESIGN SPEED = 30 M.P.H.
FUNCTIONAL CLASS - N.E. SEVENTH ST. : URBAN MINOR ARTERIAL (FAU 8694) ADT = 3600
FUNCTIONAL CLASS - ENTERPRISE ROAD: URBAN COLLECTOR (FAU 8694) ADT = 2450

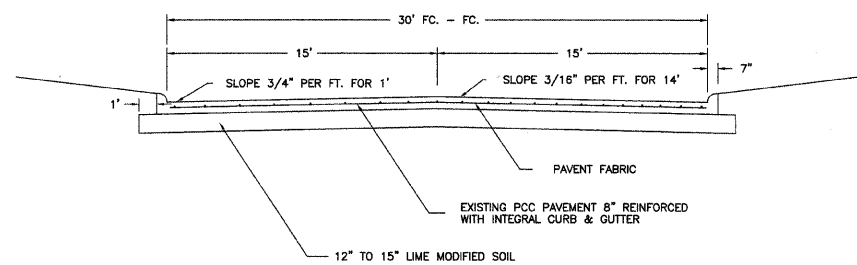
LOCATION MAP
APPROXIMATE SCALE: 1 INCH = 800 FEET
NET LENGTH = 3814.28 FEET = 0.722 MILES

TOLL FREE JOINT UTILITY LOCATING
INFORMATION FOR EXCAVATORS (J.U.L.I.E.)
TELEPHONE NO. 1-800-892-0123

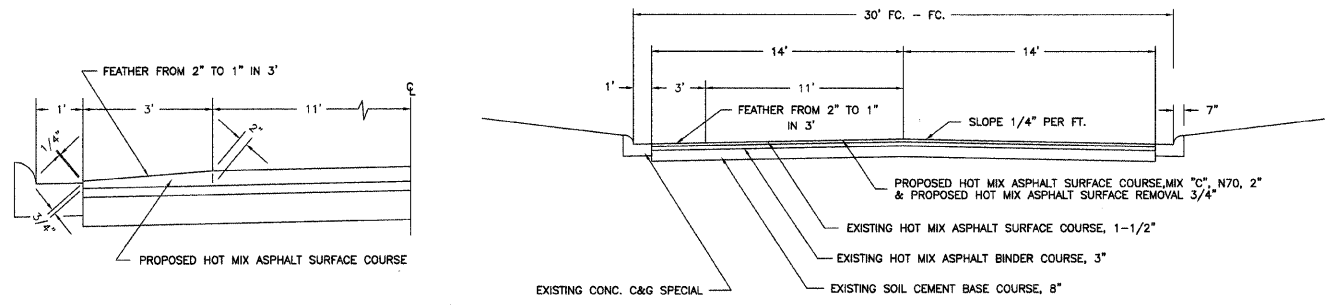
CONNOR & CONNOR, INC.
PROFESSIONAL DESIGN FIRM #184-000832

John A. St. Louis 05/18/2009
 ILLINOIS REGISTERED PROFESSIONAL ENGINEER # 55012
 LICENSE EXPIRES NOVEMBER 30, 2009

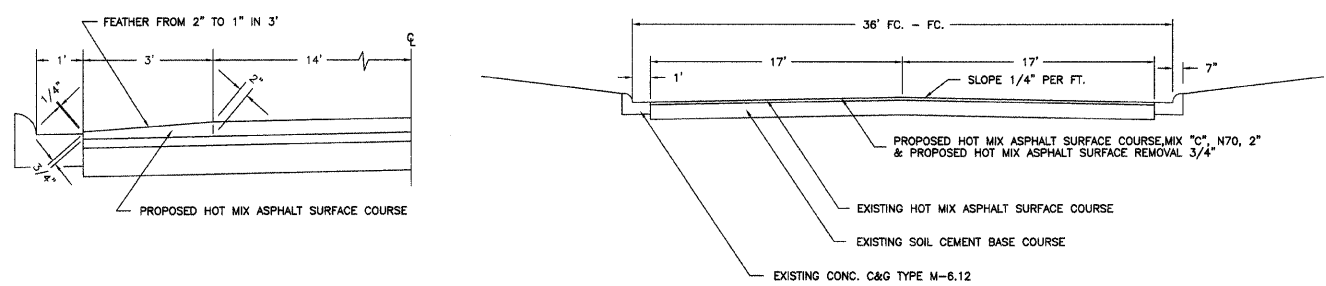
| |
|--|
| ILLINOIS DEPARTMENT OF TRANSPORTATION |
| APPROVED: _____ 5-18, 2009 <i>Wayne M. Brock</i> LOCAL AGENCY, MAYOR |
| PASSED: _____ 5-21, 2009 <i>Maureen O'Keefe</i> DISTRICT SEVEN ENGINEER OF LOCAL ROADS & STREETS |
| RELEASING FOR BID BASED ON LIMITED REVIEW _____ 5-21, 2009 <i>Paul Z. Dushell</i> DEPUTY DIRECTOR OF HIGHWAYS, REGION FOUR ENGINEER |



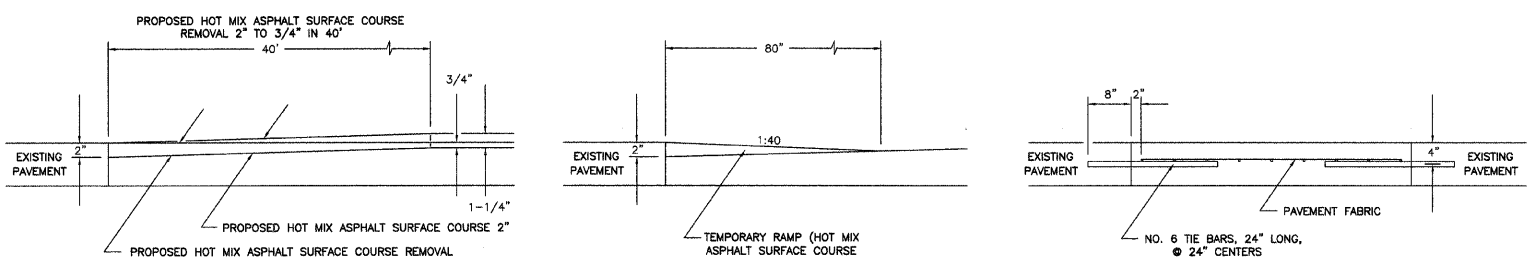
TYPICAL SECTION OF EXISTING STREET
STA. 0+20 TO STA. 11+89



TYPICAL SECTION OF EXISTING AND PROPOSED STREET
STA. 11+89 TO STA. 22+32



TYPICAL SECTION OF EXISTING AND PROPOSED STREET
STA. 22+32 TO STA. 38+35



DETAIL OF BUTT JOINTS
STA. 11+89 AND 38+35

DETAIL OF TEMPORARY RAMPS
STA. 11+89 AND 38+35

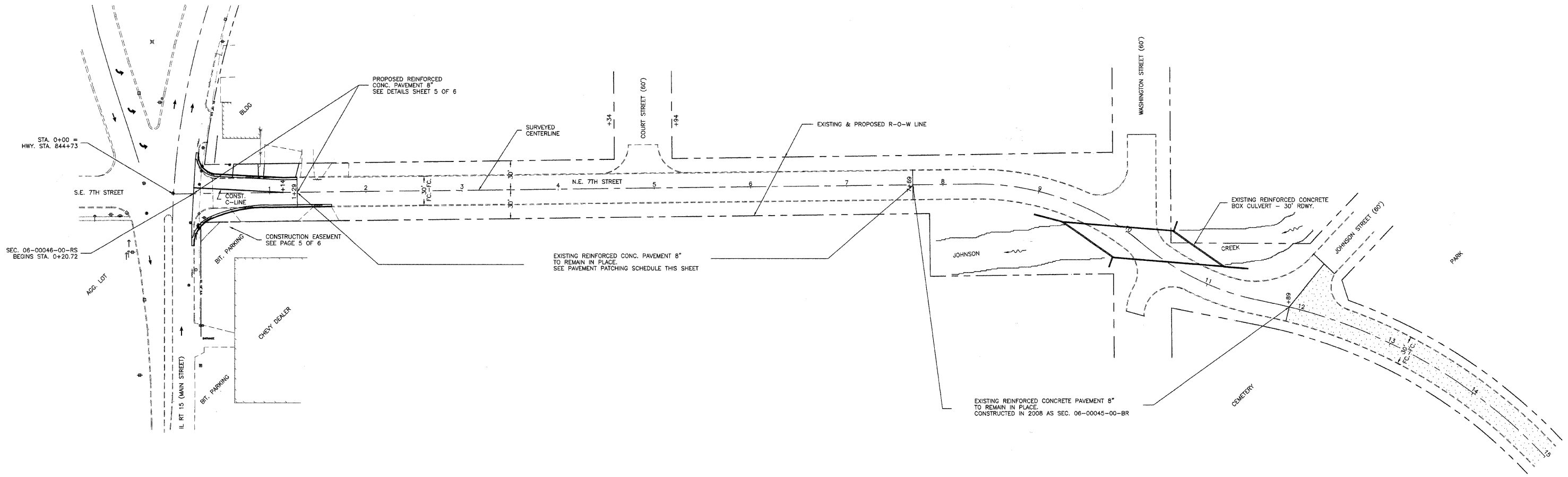
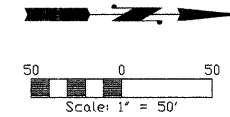
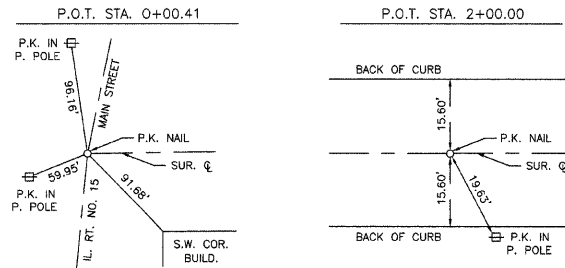
DETAIL OF CLASS A PATCHES

SUMMARY OF QUANTITIES

| QTY. | UNIT | ITEM | CODE |
|--------|--------|--|------------|
| 12 | UNITS | TREE REMOVAL, SPECIAL (6-15 UNITS DIAMETER) | 20100310* |
| 42 | UNITS | TREE REMOVAL, SPECIAL (OVER 15 UNITS DIAMETER) | 20100410* |
| 57 | CU YD | EARTH EXCAVATION | 20200100* |
| 0.03 | ACRE | SEEDING, CLASS 1 (SPECIAL) | 25000900* |
| 50 | TON | SUB-BASE GRANULAR MATERIAL, TYPE C | 31101900* |
| 16 | TON | AGGREGATE BASE COURSE, TYPE B | 35101400 |
| 63 | SQ YD | PORTLAND CEMENT CONCRETE BASE COURSE 8" | 35300300 |
| 1,011 | GAL | BITUMINOUS MATERIALS (PRIME COAT) | 40600100 |
| 21 | TON | AGGREGATE (PRIME COAT) | 40600300 |
| 1,162 | TON | HOT-MIX ASPHALT SURFACE COURSE, MIX "C", N70 | 40603315 |
| 6 | TON | INCIDENTAL HOT-MIX ASPHALT SURFACING | 40800050 |
| 414 | SQ YD | PORTLAND CEMENT CONCRETE PAVEMENT 8" | 42000300 |
| 414 | SQ YD | PAVEMENT FABRIC | 42001200 |
| 141.1 | SQ YD | PORTLAND CEMENT CONCRETE DRIVEWAY PAVEMENT, 6 INCH | 42300200 |
| 135 | SQ FT | PORTLAND CEMENT CONCRETE SIDEWALK, SPECIAL | 42400500* |
| 412 | SQ YD | PAVEMENT REMOVAL | 44000100 |
| 10,104 | SQ YD | HOT-MIX ASPHALT SURFACE REMOVAL, 3/4 | 44000152* |
| 210.0 | SQ YD | DRIVEWAY PAVEMENT REMOVAL | 44000200 |
| 113 | FOOT | COMBINATION CURB AND GUTTER REMOVAL | 44000500 |
| 6 | FOOT | COMBINATION CONCRETE CURB AND GUTTER REMOVAL AND REPLACEMENT | 44001700 |
| 102 | SQ YD | PAVEMENT REMOVAL (SPECIAL) | 44004400* |
| 2.6 | SQ YD | CLASS A PATCHES, TYPE I, 8 INCH | 44200525 |
| 13.3 | SQ YD | CLASS A PATCHES, TYPE II, 8 INCH | 44200529 |
| 24.0 | SQ YD | CLASS A PATCHES, TYPE III, 8 INCH | 44200533 |
| 4.4 | SQ YD | CLASS D PATCHES, TYPE I, 11 INCH | 44201773 |
| 28.7 | SQ YD | CLASS D PATCHES, TYPE II, 11 INCH | 44201777 |
| 83.3 | SQ YD | CLASS D PATCHES, TYPE III, 11 INCH | 44201781 |
| 64 | FOOT | STORM SEWERS, TYPE 1, REINFORCED CONCRETE CULVERT, STORM DRAIN, AND SEWER PIPE, CLASS IV 18" | 55019700 |
| 64 | FOOT | STORM SEWER REMOVAL 18" | 55100900 |
| 18 | CU YD | CONTROLLED LOW-STRENGTH MATERIAL | 59300100 |
| 2 | EACH | INLETS, TYPE B, TYPE 3 FRAME AND GRATE | 60240220 |
| 1 | EACH | INLETS TO BE RECONSTRUCTED WITH SALVAGED FRAME AND GRATE | 60265110* |
| 2 | EACH | VALVE BOXES TO BE ADJUSTED | 60266600 |
| 2 | EACH | REMOVING INLETS | 60500080 |
| 113 | FOOT | COMBINATION CONCRETE CURB AND GUTTER, TYPE B-6.12 | 60603800 |
| 300 | FOOT | COMBINATION CONCRETE CURB AND GUTTER, TYPE B-6.24 | 60605000 |
| 3 | CAL MO | ENGINEER'S FIELD OFFICE, TYPE B | 67000500 |
| 1 | L SUM | MOBILIZATION | 67100100 |
| 1 | L SUM | TRAFFIC CONTROL AND PROTECTION, STANDARD 701201 | 70100450 |
| 1 | L SUM | TRAFFIC CONTROL AND PROTECTION, STANDARD 701701, LOCATION 1 | 70106401* |
| 1 | L SUM | TRAFFIC CONTROL AND PROTECTION, STANDARD 701701, LOCATION 2 | 70106402* |
| 10 | CAL DA | TRAFFIC CONTROL SURVEILLANCE | 70103815 |
| 850 | FOOT | PAINT PAVEMENT MARKING - LINE 4" | 78001110 Δ |
| 42 | FOOT | PAINT PAVEMENT MARKING - LINE 24" | 78001180 Δ |

* SEE SPECIAL PROVISIONS Δ SPECIALTY ITEMS

| | | | |
|---|--|--|---|
| DATE 02/23/2006 SCALE 1"=50' DRAWN BY JLC PROJECT P-1440 | | | TYPICAL CROSS SECTIONS & SUMMARY OF QUANTITIES SEC. 06-00046-00-RS CITY OF FAIRFIELD |
| | | | Phone 618-544-8623 209 North Cross Street ROBINSON, ILLINOIS 62454 Fax 618-544-3012 |



PROPOSED HMA SURFACE COURSE, MIX "C", N70, 2"
 & PROPOSED HMA SURFACE REMOVAL 3/4"
 SEE TYPICAL SECTION SHEET 2 OF 6

STA. 11+89 TO STA. 15+00
 HMA SURFACE COURSE REMOVAL 3/4" = 1129 SQ. YD.
 HMA SURFACE COURSE, MIX "C", N70, 2" = 130 TONS
 BITUMINOUS MATERIALS (PRIME COAT) = 113 GALLONS
 AGGREGATE (PRIME COAT) = 3 TONS

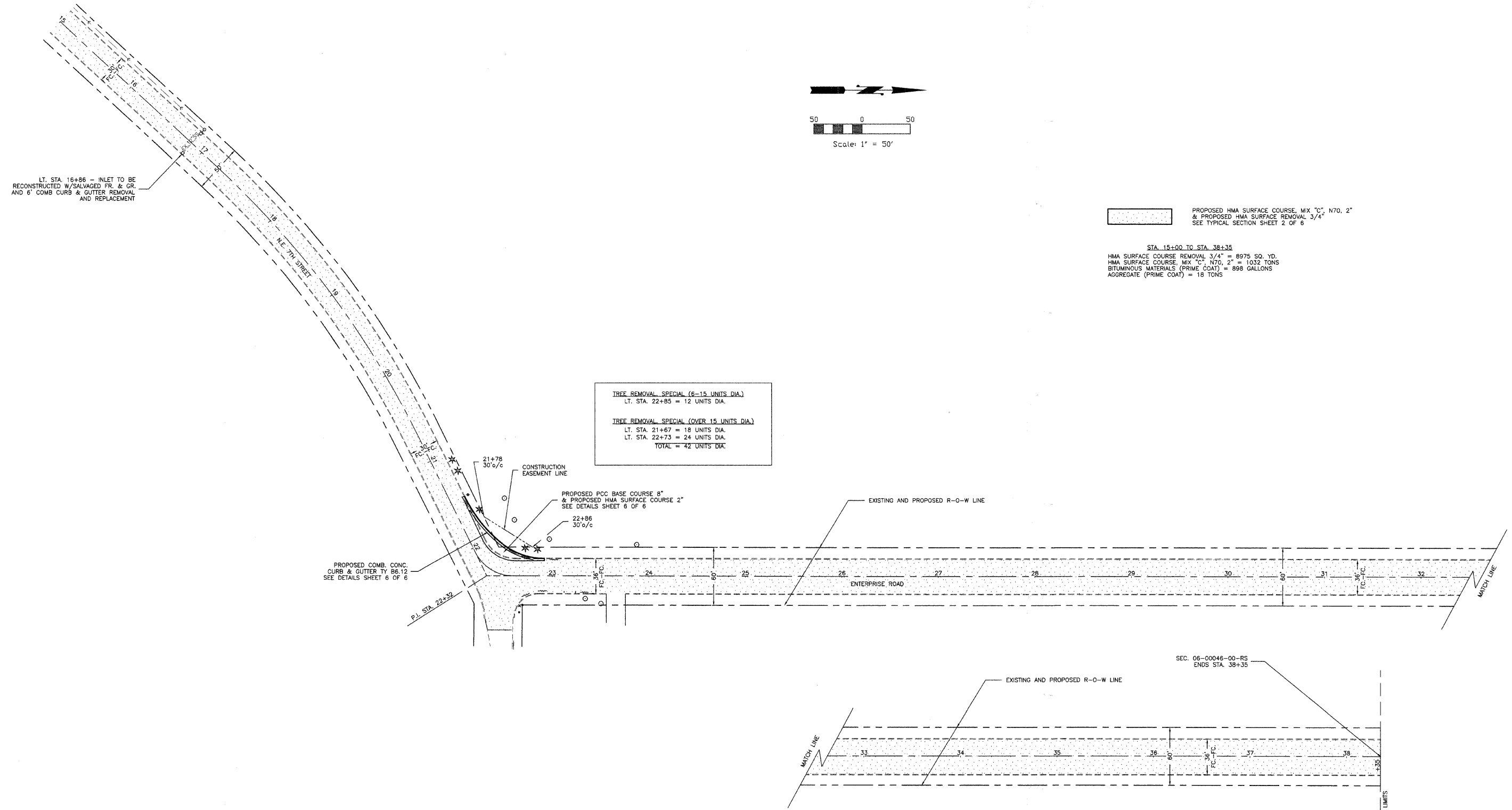
PAINT PAVEMENT MARKING LINES
 (4" YELLOW) CENTERLINE STRIPE STA. 0+21 TO STA. 7+69 = 190 FOOT
 STA. 11+89 TO STA. 38+35 = 660 FOOT
 TOTAL = 850 FOOT
 (24" WHITE) STOP BARS LT. STA. 0+23 = 24 FOOT
 LT. STA. 22+72 = 18 FOOT
 TOTAL = 42 FOOT

PAVEMENT PATCHING SCHEDULE

| CLASS A PATCH 8" | | | | | CLASS D PATCH 11" | | | | |
|------------------|------------|-------------|-------------|---------|-------------------|--------|------------|-------------|---------|
| STA. | TYPE I | TYPE II | TYPE III | TYPE IV | STA. | TYPE I | TYPE II | TYPE III | TYPE IV |
| LT.1+40 | | 13.3 SQ.YD. | | | LT.12+00 | | 6.7 SQ.YD. | | |
| LT.3+15 | | | 24.0 SQ.YD. | | RT.12+25 | | | 22.2 SQ.YD. | |
| LT.3+90 | 1.3 SQ.YD. | | | | RT.13+10 | | | 33.3 SQ.YD. | |
| RT.5+05 | 1.3 SQ.YD. | | | | RT.14+30 | | | 27.8 SQ.YD. | |
| TOTALS | 2.6 SQ.YD. | 13.3 SQ.YD. | 24.0 SQ.YD. | | TOTALS | | 6.7 SQ.YD. | 83.3 SQ.YD. | |

| | | | | | |
|------------|----------------|---------------|---|-----------|---|
| SECTION | 06-00046-00-RS | TOTAL SHEETS | 6 | SHEET NO. | 4 |
| CITY | FAIRFIELD | | | | |
| STA. 15+00 | | TO STA. 38+35 | | | |

CONTRACT NO. 95575



PROPOSED HMA SURFACE COURSE, MIX "C", N70, 2"
& PROPOSED HMA SURFACE REMOVAL 3/4"
SEE TYPICAL SECTION SHEET 2 OF 6

STA. 15+00 TO STA. 38+35
HMA SURFACE COURSE REMOVAL 3/4" = 8975 SQ. YD.
HMA SURFACE COURSE, MIX "C", N70, 2" = 1032 TONS
BITUMINOUS MATERIALS (PRIME COAT) = 898 GALLONS
AGGREGATE (PRIME COAT) = 18 TONS

TREE REMOVAL SPECIAL (6-15 UNITS DIA.)
LT. STA. 22+85 = 12 UNITS DIA.

TREE REMOVAL SPECIAL (OVER 15 UNITS DIA.)
LT. STA. 21+67 = 18 UNITS DIA.
LT. STA. 22+73 = 24 UNITS DIA.
TOTAL = 42 UNITS DIA.

LT. STA. 16+86 - INLET TO BE RECONSTRUCTED W/SALVAGED FR. & GR. AND 6" COMB CURB & GUTTER REMOVAL AND REPLACEMENT

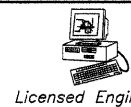
PROPOSED COMB. CONC. CURB & GUTTER TY B6.12
SEE DETAILS SHEET 6 OF 6

PROPOSED PCC BASE COURSE 8"
& PROPOSED HMA SURFACE COURSE 2"
SEE DETAILS SHEET 6 OF 6

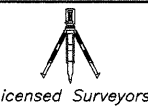
PAVEMENT PATCHING SCHEDULE

| CLASS D PATCH 11" | | | | |
|-------------------|------------|-------------|----------|---------|
| STA. | TYPE I | TYPE II | TYPE III | TYPE IV |
| LT.16+86 | | 7.1 SQ.YD. | | |
| LT.20+50 | 4.4 SQ.YD. | | | |
| LT.20+75 | | 5.6 SQ.YD. | | |
| LT.21+61 | | 9.3 SQ.YD. | | |
| TOTALS | 4.4 SQ.YD. | 22.0 SQ.YD. | | |

DATE 02/23/2005
REV. 03/13/2005
SCALE: 1"=50'
DRAWN BY: JLC
PROJECT: P-1440



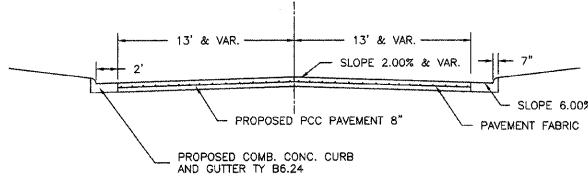
CONNOR & CONNOR, Inc.
CONSULTING ENGINEERS
209 North Cross Street
ROBINSON, ILLINOIS 62454
Phone 618-544-8623 Fax 618-544-3012



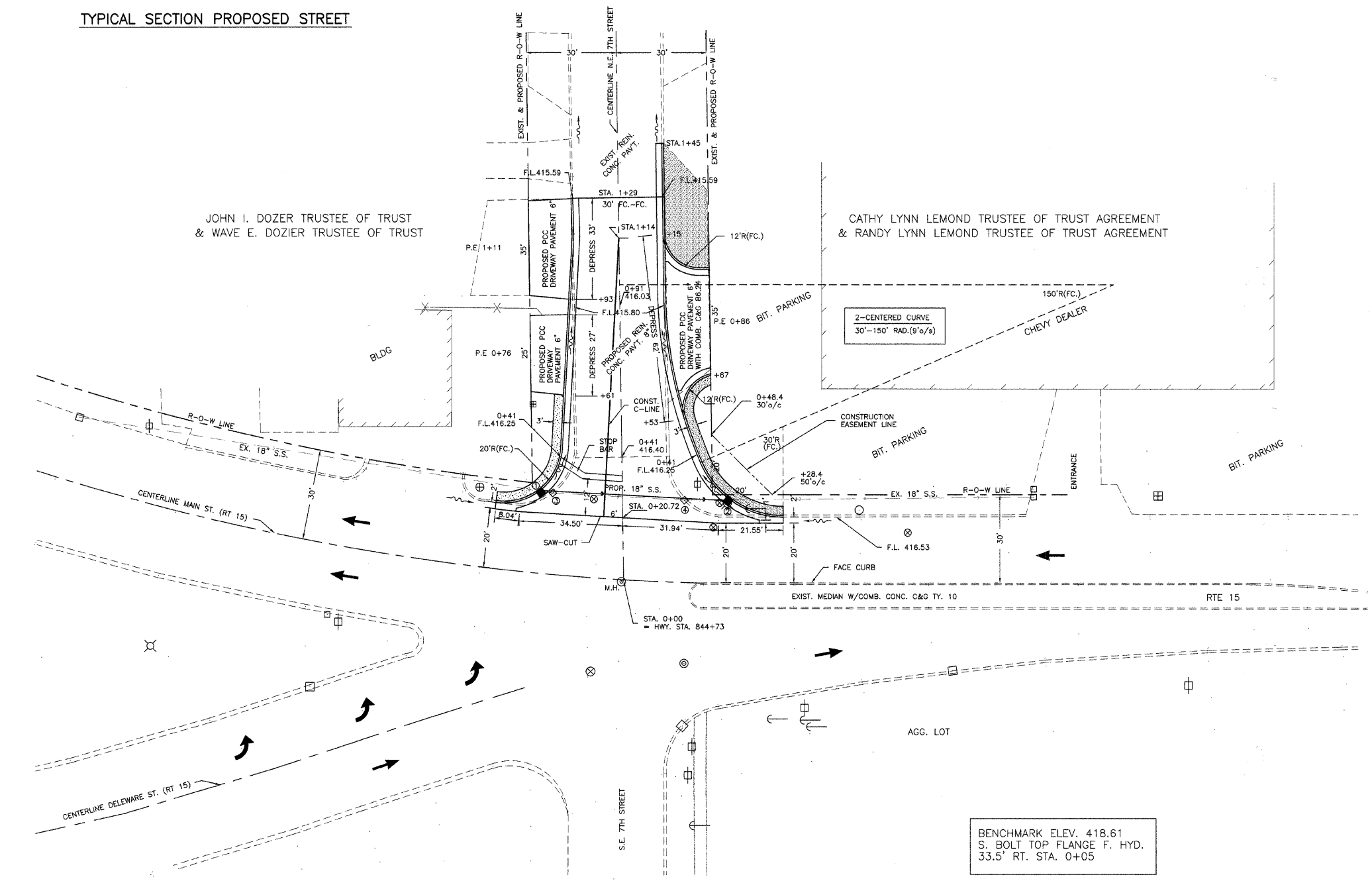
PLAN VIEW STA. 15+00 TO 38+35
SEC. 06-00046-00-RS
CITY OF FAIRFIELD

| | | | |
|-----------|----------------|--------------|-----------|
| SECTION | 06-00046-00-RS | TOTAL SHEETS | SHEET NO. |
| CITY | FAIRFIELD | 6 | 5 |
| STA. 0+00 | | TO STA. 1+29 | |

CONTRACT NO. 95575



TYPICAL SECTION PROPOSED STREET



QUANTITIES THIS SHEET

| | |
|---|--|
| PCC PAVEMENT REINFORCED 8" | |
| STA. 0+20.72 TO STA. 1+27 = 414 SQ. YD. | |
| PAVEMENT REMOVAL | PAVEMENT REMOVAL SPECIAL |
| STA. 0+20.72 TO STA. 1+29 = 407 SQ. YD. | LT. STA. 0+20.72 TO STA. 0+81 = 34 SQ. YD. |
| RT. STA. 1+27 TO STA. 1+45 = 5 SQ. YD. | RT. STA. 0+20.72 TO STA. 0+73 = 68 SQ. YD. |
| TOTAL = 412 SQ. YD. | TOTAL = 102 SQ. YD. |
| COMB. CONCRETE CURB & GUTTER, TYPE B6.24 | |
| LT. STA. 0+20.72 TO STA. 1+29 = 115 FOOT | |
| RT. STA. 0+20.72 TO STA. 1+45 = 143 FOOT | |
| P.E.R STA. 0+86 = 42 FOOT | |
| TOTAL = 300 FOOT | |

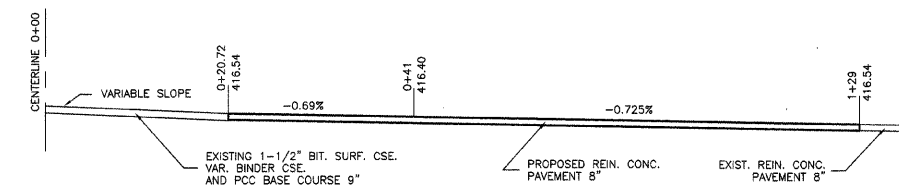
| | |
|----------------------------------|--|
| PCC DRIVEWAY PAVEMENT 6" | |
| LT. STA. 0+76 = 42.4 SQ. YD. | |
| LT. STA. 1+11 = 51.8 SQ. YD. | |
| RT. STA. 0+86 = 45.5 SQ. YD. | |
| TOTAL = 141.1 SQ. YD. | |
| DRIVEWAY PAVEMENT REMOVAL | |
| LT. STA. 0+76 = 42.4 SQ. YD. | |
| LT. STA. 1+11 = 51.8 SQ. YD. | |
| RT. STA. 0+86 = 115.4 SQ. YD. | |
| TOTAL = 209.8 SQ. YD. | |

| | |
|-----------------------------------|--|
| STORM SEWER REMOVAL 18" | |
| ① - ③ = 5 FOOT | |
| ③ - ④ = 44 FOOT | |
| ④ - ⑤ = 15 FOOT | |
| TOTAL = 64 FOOT | |
| VALVE BOXES TO BE ADJUSTED | |
| 9' LT. STA. 0+27 = 1 EACH | |
| 32' RT. STA. 0+25 = 1 EACH | |
| TOTAL = 2 EACH | |

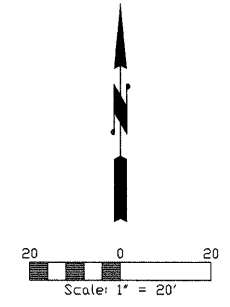
| | |
|--|--|
| STORM SEWER TY 1, RCP, CL 4, 18" | |
| ① - ② = 64 FOOT | |
| CONTROLLED LOW STRENGTH MATERIAL | |
| ① - ② (INCLUDES S.S. REMOVAL) = 18 CU. YD. | |

| | |
|--|---|
| | AGGREGATE BASE COURSE TYPE B 6" = 16 TONS |
| | INCIDENTAL HMA SURFACING 2" = 6 TONS |
| | PCC SIDEWALK, SPECIAL = 135 SQ. FT. |
| | SUB-BASE GRANULAR MATERIAL, TY C = 7 TONS |
| | SEE SPECIAL PROVISIONS |

| DRAINAGE STRUCTURES | | | |
|-----------------------|------------------------------|--------|--------|
| LOCATION | TYPE | GRATE | INVERT |
| ① 38.2' LT. STA. 0+31 | INLET TYPE B, TYPE 3 F&G | 416.35 | 412.49 |
| ② 48.7' RT. STA. 0+26 | INLET TYPE B, TYPE 3 F&G | 416.33 | 412.46 |
| ③ 23.2' LT. STA. 0+29 | EXISTING INLET TO BE REMOVED | | |
| ④ 20.6' RT. STA. 0+26 | EXISTING INLET TO BE REMOVED | | |



PROPOSED PROFILE



LEGEND

| | |
|--|--------------|
| | POWER POLE |
| | WATER VALVE |
| | MANHOLE |
| | EXIST. INLET |
| | PROP. INLET |
| | FIRE HYDRANT |
| | MAG NAIL |

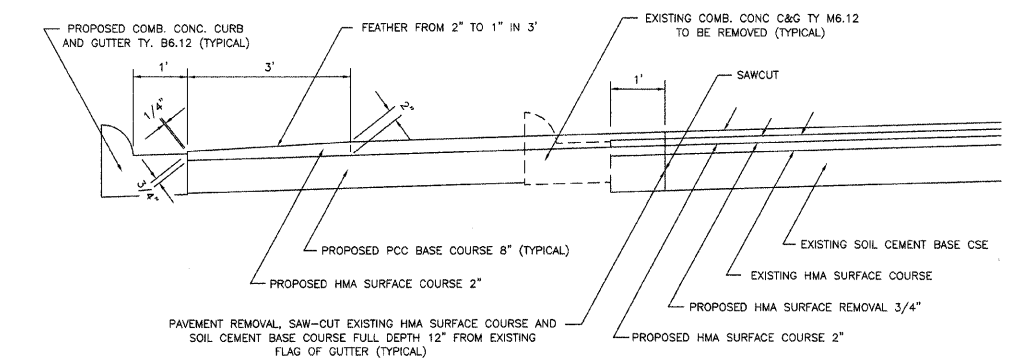
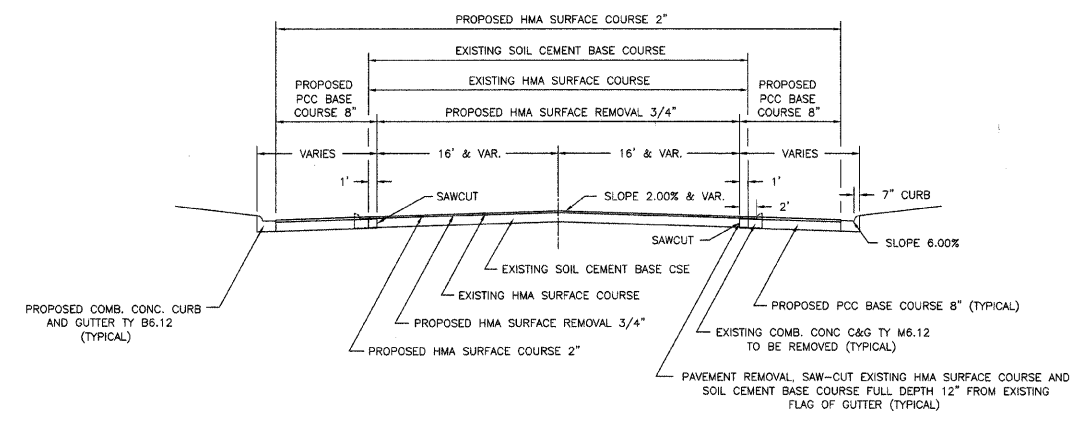
DATE: 02/23/2005
 TIME: 11:50
 SCALE: 1"=50'
 DRAWN BY: JLC
 PROJECT: P-1440

CONNOR & CONNOR, Inc.
 CONSULTING ENGINEERS
 209 North Cross Street
 ROBINSON, ILLINOIS 62454
 Phone: 618-544-8623
 Fax: 618-544-3012
 Licensed Engineers
 Licensed Surveyors

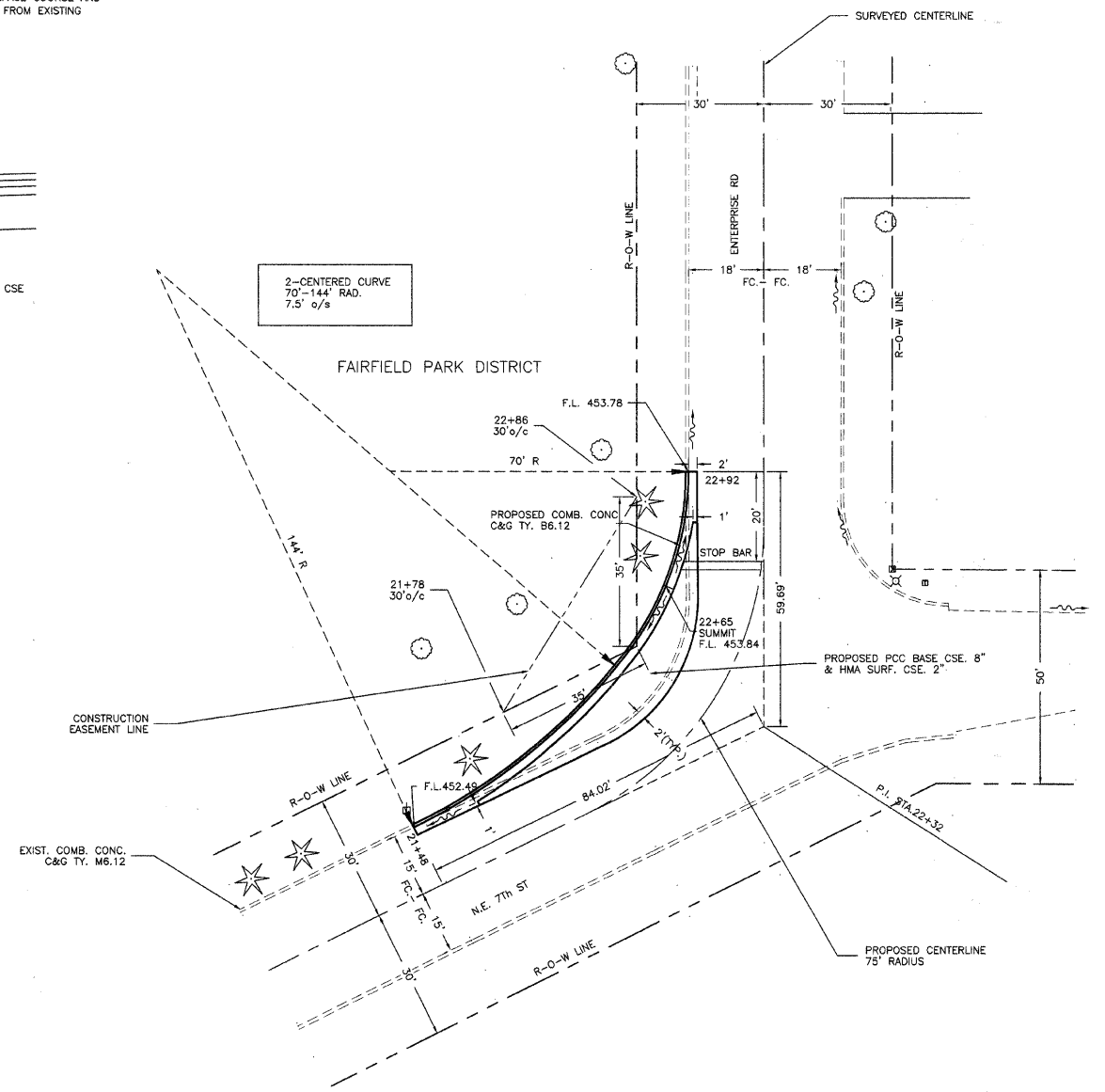
INTERSECTION DETAIL STA. 0+20.72
 SEC. 06-00046-00-RS
 CITY OF FAIRFIELD

| | | | | | |
|---------|----------------|--------------|---|-----------|---|
| SECTION | 06-00046-00-RS | TOTAL SHEETS | 6 | SHEET NO. | 6 |
| CITY | FAIRFIELD | | | | |

STA. 21+48 TO STA. 23+24
CONTRACT NO. 95575



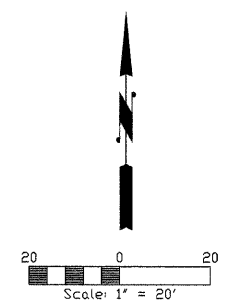
TYPICAL SECTION PROPOSED STREET (LT. SIDE ONLY)



MAX EDWARD TIPPS

QUANTITIES THIS SHEET

- PCC BASE COURSE 8"
LT. STA. 21+48 TO STA. 22+92 = 63 SQ. YD.
- COMB. CONCRETE CURB & GUTTER TYPE B6.12
LT. STA. 21+48 TO STA. 22+92 = 113 FOOT
- COMB. CONCRETE CURB & GUTTER REMOVAL
LT. STA. 21+48 TO STA. 22+92 = 119 FOOT
- PAVEMENT REMOVAL
LT. STA. 21+48 TO STA. 22+92 = 13 SQ. YD.
- EARTH EXCAVATION
LT. STA. 21+48 TO STA. 22+92 = 57 CU. YD.



LEGEND

- CONIF. TREE
- ★ DECID. TREE
- ⊗ LIGHT POLE
- ⊠ R-O-W MARKER
- ⊞ TEL. PEDESTAL

BENCHMARK ELEV. 454.65
P-K NAIL IN POWER POLE
S.E. CORNER OF N.E. 7TH STREET
AND ENTERPRISE ROAD

DATE: 02/23/2006
REV: 05/15/2009
SCALE: 1"=50'
DRAWN BY: JUC
PROJECT: P-1440

CONNOR & CONNOR, Inc.
CONSULTING ENGINEERS
209 North Cross Street
ROBINSON, ILLINOIS 62454
Phone: 618-544-8623
Fax: 618-544-3012
Licensed Engineers
Licensed Surveyors

INTERSECTION DETAIL STA. 22+32
SEC. 06-00046-00-RS
CITY OF FAIRFIELD