

T.R. RTE.	SECTION	COUNTY	TOTAL SHEETS	SHEET NO.
336A	08-15131-00-BR	SHELBY	13	1
CONTRACT NO. 95586				
FED. ROAD DIST. NO. 1 ILLINOIS FED. AID PROJECT				

**STATE OF ILLINOIS
DEPARTMENT OF TRANSPORTATION**

PLANS FOR PROPOSED HIGHWAY BRIDGE PROGRAM

**PROJECT NO. BROS-173(167)
T.R. 336A OVER WOLF CREEK
PRAIRIE ROAD DISTRICT
SECTION 08-15131-00-BR
SHELBY COUNTY
JOB NO. C-97-087-09**



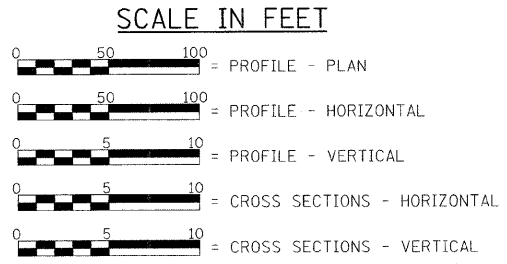
- INDEX OF SHEETS**
- 1 - TITLE SHEET
 - 2 - SUMMARY OF QUANTITIES, GENERAL NOTES, DETAILS, & TYPICAL SECTIONS
 - 3 - PLAN & PROFILE
 - 4 - GENERAL PLAN & ELEVATION
 - 5 - 6 - SUPERSTRUCTURE
 - 7 - RAILING
 - 8 - ABUTMENTS
 - 9 - HP PILE DETAILS
 - 10-13 - CROSS SECTIONS

STANDARDS	DESCRIPTION
STANDARD 000001-05	STANDARD SYMBOLS, ABBREVIATIONS, AND PATTERNS
STANDARD 280001-04	TEMPORARY EROSION CONTROL SYSTEMS
STANDARD 515001-03	NAME PLATES FOR BRIDGES
STANDARD 701901-01	TRAFFIC CONTROL DEVICES
STANDARD BLR 21-8	TYPICAL APPLICATION OF TRAFFIC CONTROL DEVICES FOR CONSTRUCTION ON RURAL LOCAL HIGHWAYS

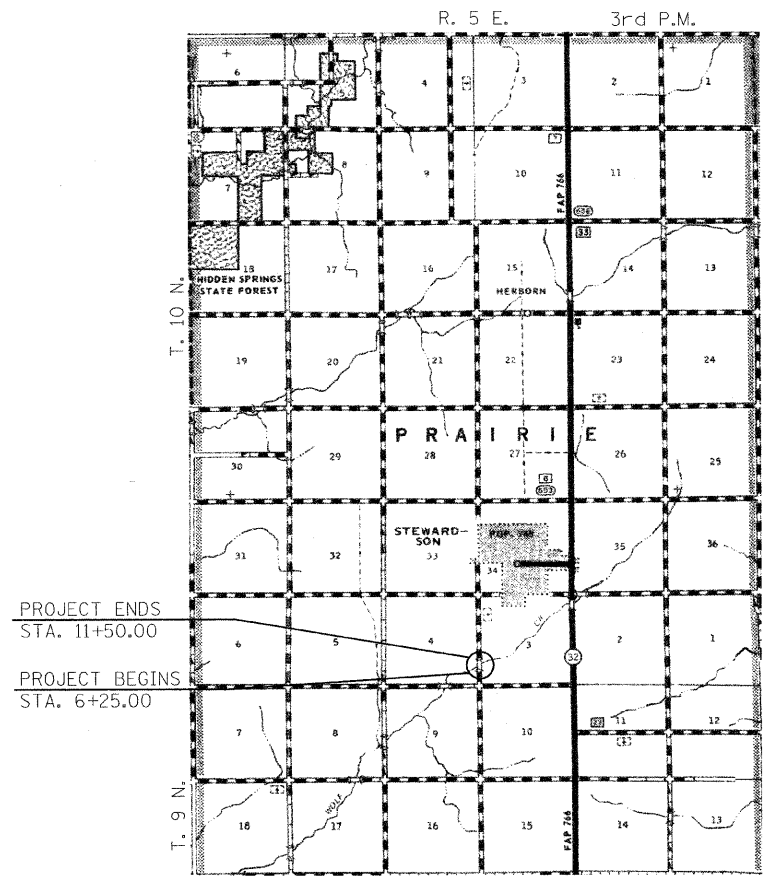
LIST OF UTILITIES

SHELBY ELECTRIC COOPERATIVE
NORTH ROUTE 128
SHELBYVILLE, ILLINOIS 62565

CONSOLIDATED COMMUNICATIONS INC.
121 SOUTH 17TH STREET
MATTOON, ILLINOIS 61938-3915
217-234-9971



LAND SECTIONS - 3 & 4
LAND QUARTER SECTION - S.W. & S.E.
FUNCTIONAL CLASSIFICATION: LOCAL ROAD (NON-URBAN)
A.D.T. - 250 (2008)
A.D.T. - 325 (2031)
40 M.P.H. DESIGN SPEED



EXISTING STRUCTURE:
TWO SPAN PRECAST CONCRETE DECK BEAMS SUPPORTED BY TIMBER ABUTMENTS AND TIMBER WINGWALLS ±40'-0" BK. - BK. ABUTMENTS, ±22'-4" CLEAR DECK WIDTH. EXISTING STRUCTURE NO. 087-3213

PROPOSED STRUCTURE:
SINGLE SPAN PRECAST PRESTRESSED CONCRETE DECK BEAMS (27") ON OPEN CONCRETE ABUTMENTS. 64'-0" BK. - BK. ABUTMENTS, 24'-0" OUT - OUT DECK TYPE S-1 RAILING 20° SKEW RT. FWD. PROPOSED STRUCTURE NO. 087-3566



Christopher P. Hohlins 3/24/09
EXPIRATION: 11/30/2009

APPROVED 3-24 2009
L. Al...
COUNTY ENGINEER

APPROVED 3-24 2009
Richard Shuman
ROAD DISTRICT COMMISSIONER

PASSED 4-14 2009
M...
DISTRICT SEVEN ENGINEER OF LOCAL ROADS & STREETS

Releasing For Bid Based on Limited Review 4/14 2009
Roger K. Driskell
DEPUTY DIRECTOR OF HIGHWAYS, REGION FOUR ENGINEER

STATE OF ILLINOIS
DEPARTMENT OF TRANSPORTATION

TOLL FREE
"JOINT UTILITY LOCATION INFORMATION FOR EXCAVATORS"
(J.U.L.I.E.) TELEPHONE NUMBER
1-800-892-0123

CONTRACT NO. 95586

FILE NAME	USER NAME	DESIGNED	REVISED	<p>Allen Henderson & Associates, Inc. Civil and Structural Engineers Springfield, IL 62703 Phone: (217)544-8033 IL Design Firm No. 184-001907</p>	<p align="center">TITLE SHEET</p> <p>SCALE: 1" = 1 MILE SHEET NO. 1 OF 13 SHEETS</p>	T.R. RTE.	SECTION	COUNTY	TOTAL SHEETS	SHEET NO.	
#FILE#	PLOT SCALE	DRAWN	REVISED			336A	08-15131-00-BR	SHELBY	13	1	
PLOT DATE	DATE	CHECKED	REVISED			CONTRACT NO.					
		DATE				FED. ROAD DIST. NO. 1 ILLINOIS FED. AID PROJECT					