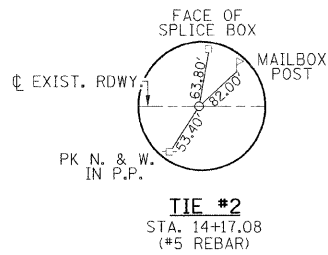
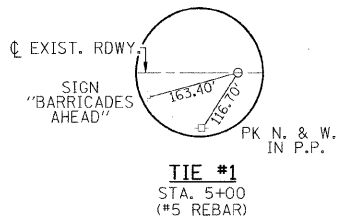
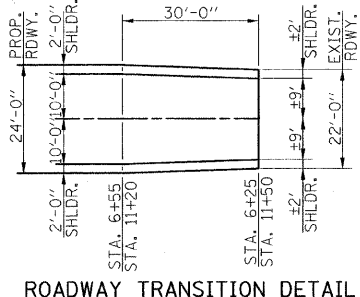
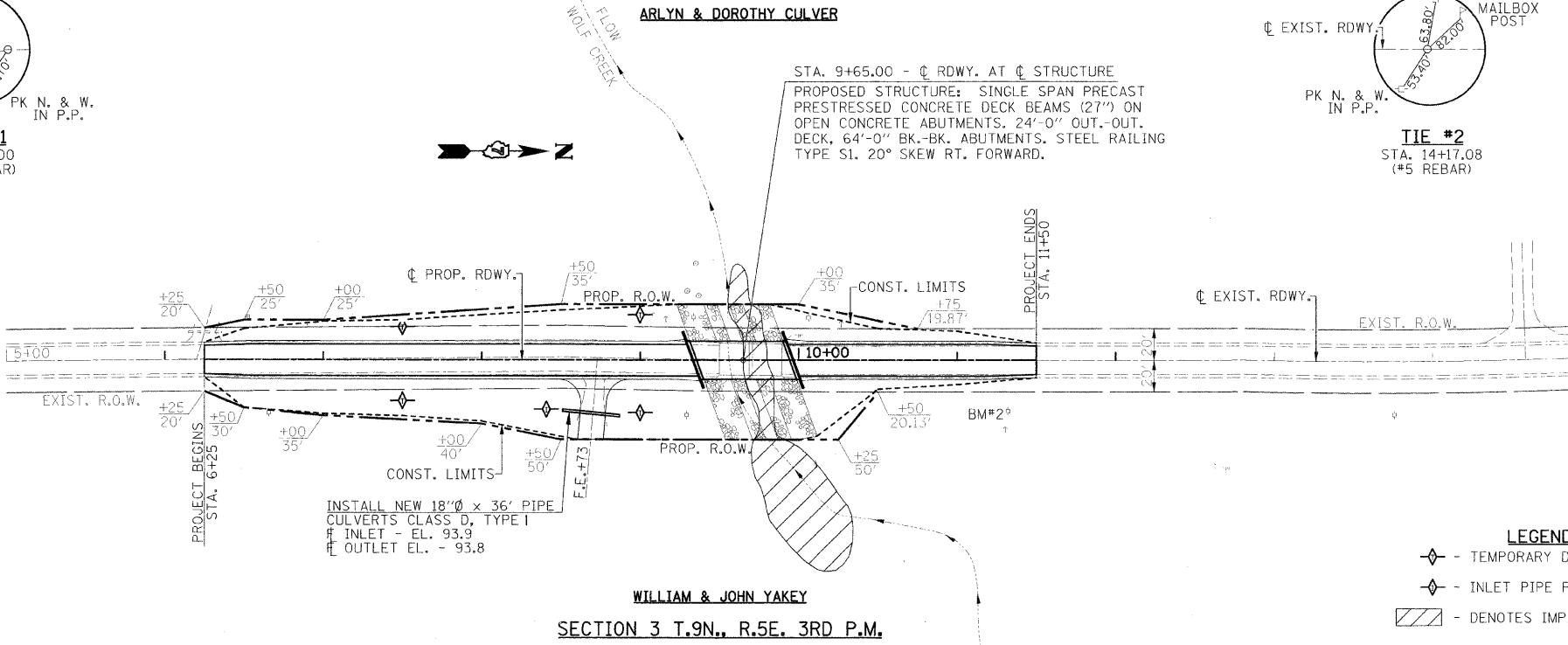


SECTION 4 T.9N., R.5E. 3RD P.M.



T.R. RTE.	SECTION	COUNTY	TOTAL SHEETS	SHEET NO.
336A	08-15131-00-BR	SHELBY	13	3
CONTRACT NO. 95586				
FED. ROAD DIST. NO.		ILLINOIS FED. AID PROJECT		



SCHEDULE
TEMPORARY DITCH CHECKS

LOCATION	QUANTITY (EACH)
STA. 7+50 21' LT. & 25.5' RT.	2
STA. 9+00 28.5' LT. & 33' RT.	2
TOTAL	4

SCHEDULE
INLET PIPE PROTECTION

LOCATION	QUANTITY (EACH)
STA. 8+45 31' RT.	1
TOTAL	1

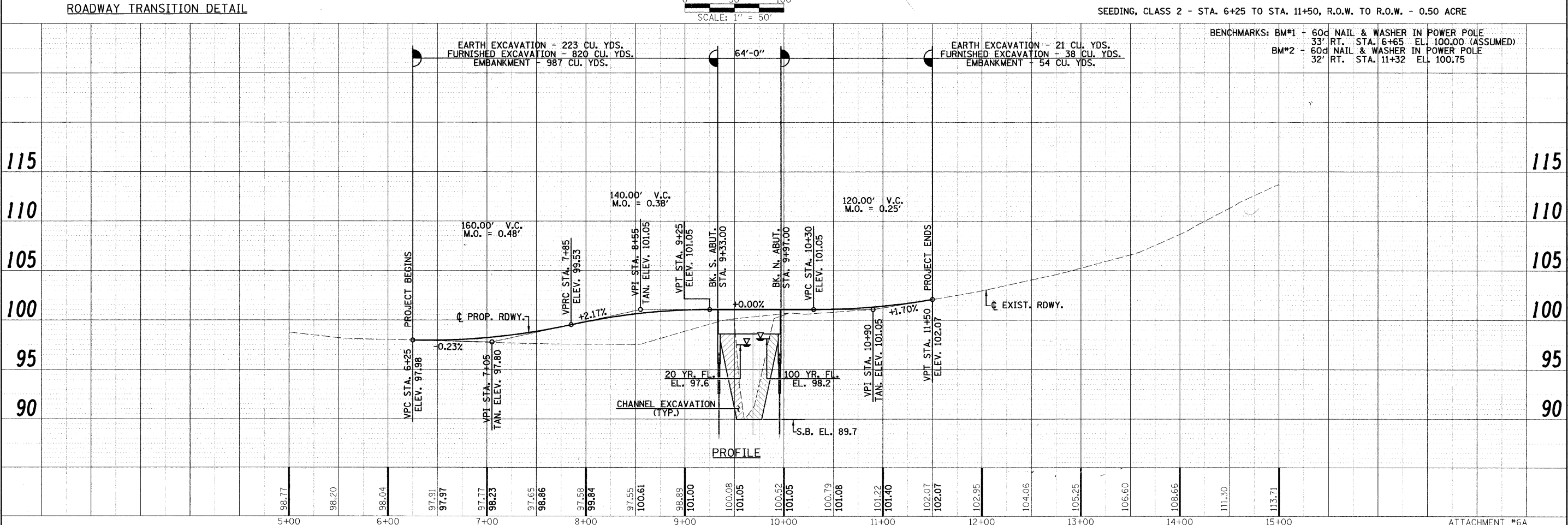
- LEGEND
- ◆ - TEMPORARY DITCH CHECKS
 - ◆ - INLET PIPE PROTECTION
 - ▨ - DENOTES IMPACTED WETLAND AREA

PLAN

REVISION	DATE
NO.	
BY	
DATE	
NO.	
BY	
DATE	
NO.	
BY	
DATE	

PROFILE

REVISION	DATE
NO.	
BY	
DATE	
NO.	
BY	
DATE	
NO.	
BY	
DATE	



FILE NAME	USFR NAME	DESIGNED - F.L.L.	REVISED -	<p>Allen Henderson & Associates, Inc. Civil and Structural Engineers Springfield, IL 62703 Phone: (217)544-8033 IL Design Firm No. 184-001907</p>	T.R. RTE.	SECTION	COUNTY	TOTAL SHEETS	SHEET NO.
*FILE#		DRAWN - M.J.S.	REVISED -		336A	08-15131-00-BR	SHELBY	13	3
PLOT SCALE		CHECKED - M.A.H.	REVISED -		CONTRACT NO.				
PLOT DATE		DATE	REVISED		SCALE: 1" = 50' SHEET NO. 3 OF 13 SHEETS STA. 6+25 TO STA. 11+50				
					FED. ROAD DIST. NO.		ILLINOIS FED. AID PROJECT		