

ROUTE	SECTION	COUNTY	TOTAL SHEETS	SHEET NO.
F.A.S. 711	08-00090-00-RS	EFFINGHAM	2	1
CONTRACT NO. 95587		ILLINOIS	PROJECT ARA-RS-711(108)	

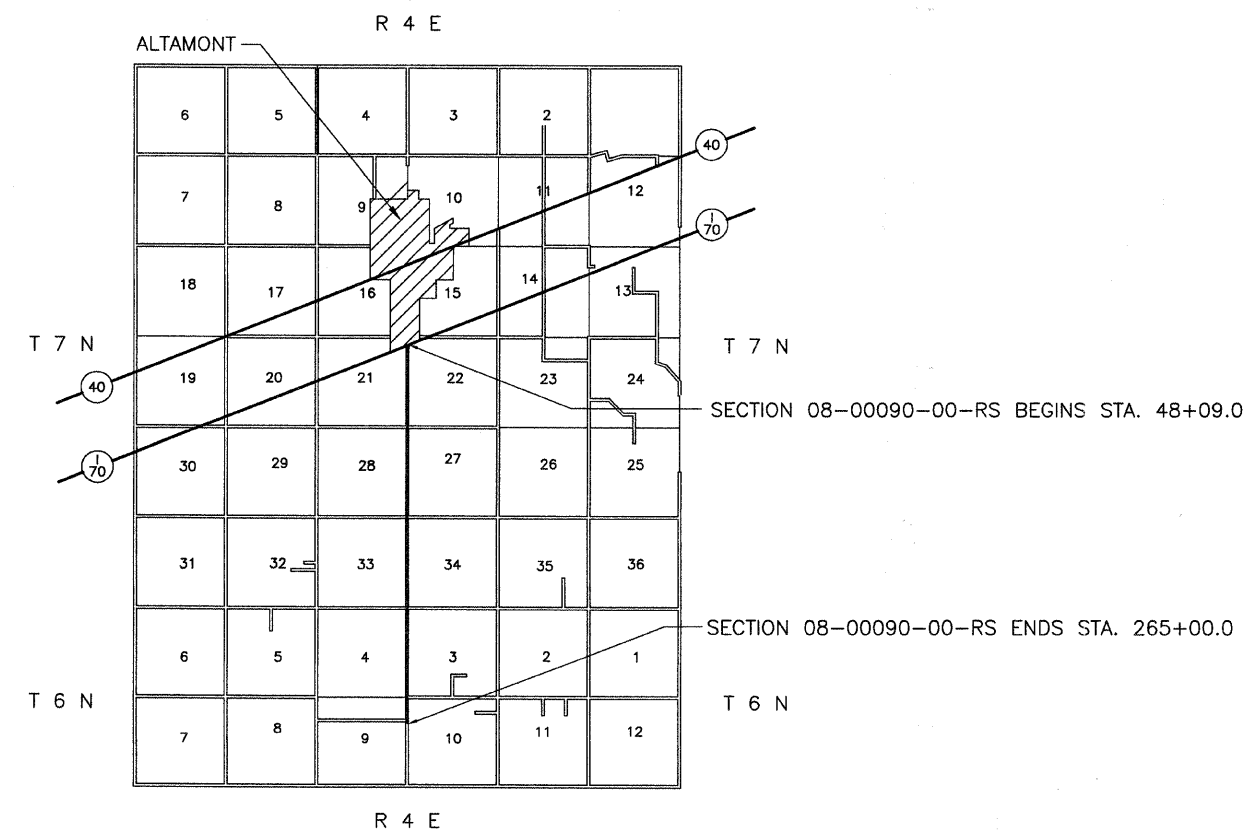
STATE OF ILLINOIS  
DEPARTMENT OF TRANSPORTATION  
DIVISION OF HIGHWAYS  
PLANS FOR PROPOSED  
FEDERAL AID SECONDARY PROJECT  
EFFINGHAM COUNTY  
SECTION 08-00090-00-RS  
F.A.S. 711  
COUNTY HIGHWAY 25  
JOB NO. C-97-093-09  
PROJECT NO. ARA-RS-711(108)

INDEX OF SHEETS

SHEET	ITEM
1	COVER SHEET
2	SUMMARY OF QUANTITIES
	STANDARD 00001-05
	STANDARD 701006-03
	STANDARD 701011-02
	STANDARD 701301-03
	STANDARD 701306-02
	STANDARD 701311-03
	STANDARD 701901-01
	STANDARD 780001-02
	BLR-21-8
	BLR-22-6

THESE PLANS WERE PREPARED BY ME, OR A FULL TIME MEMBER OF MY STAFF, WORKING UNDER MY PERSONAL SUPERVISION.

*GJK* 04-08-09  
ILLINOIS REG. PROF. ENG. 51474 DATE  
LICENSE EXPIRES 11/30/09  
101 N. FOURTH ST., SUITE 304  
EFFINGHAM, ILLINOIS 62401  
PHONE 217-342-6550



RURAL MAJOR COLLECTOR  
ADT (1-70 TO 800TH AVE.)= 3650  
ADT (800TH AVE. TO 475TH AVE.)= 2000  
DESIGN SPEED = 55 MPH

CONTRACT NO. 95587

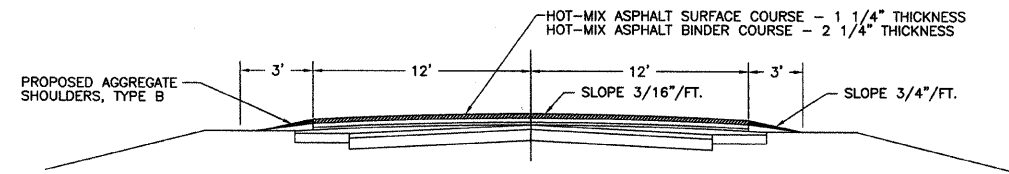
Joint Utility Locating Information for Excavators  
JULIE 1-800-892-0123

NET LENGTH SECTION 08-00090-00-RS = 21,691.0 Ft. = 4.108 Mi.

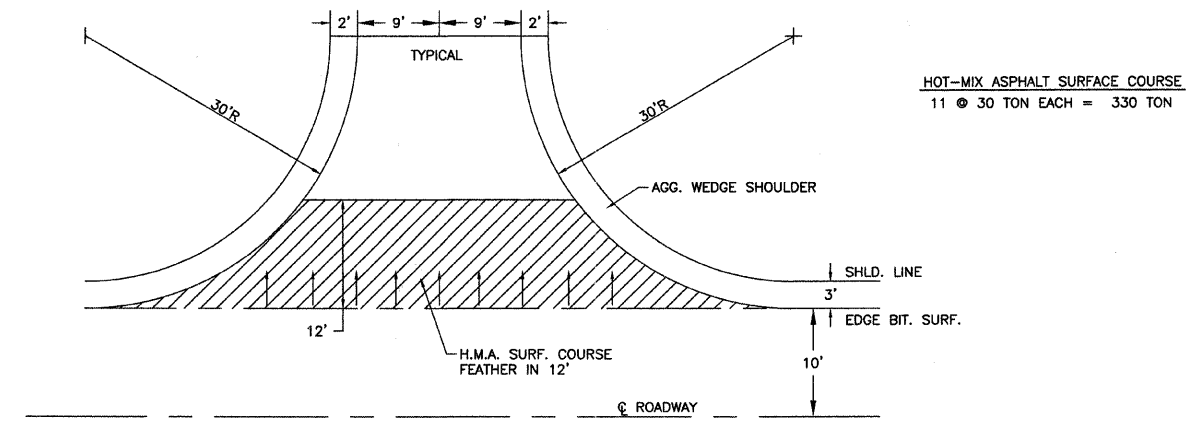
STATE OF ILLINOIS DEPARTMENT OF TRANSPORTATION	
APPROVED	<i>April 8<sup>th</sup> 20 09</i> <i>GJK</i> COUNTY ENGINEER
PASSED	<i>4-14 20 09</i> <i>M. K. K...</i> DISTRICT SEVEN ENGINEER OF LOCAL ROADS AND STREETS
Releasing For Bid Based on Limited Review	<i>4-14 20 09</i> <i>Roger L. D...</i> DEPUTY DIRECTOR OF HIGHWAYS REGION FOUR ENGINEER

ROUTE	SECTION	COUNTY	TOTAL SHEETS	SHEET NO.
F.A.S. 711	08-00090-00-RS	EFFINGHAM	2	2
CONTRACT NO. 95587		ILLINOIS	PROJECT ARA-RS-711(108)	

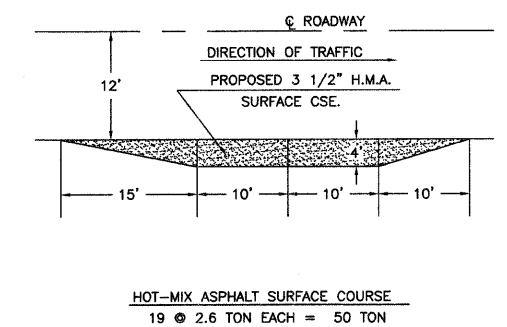
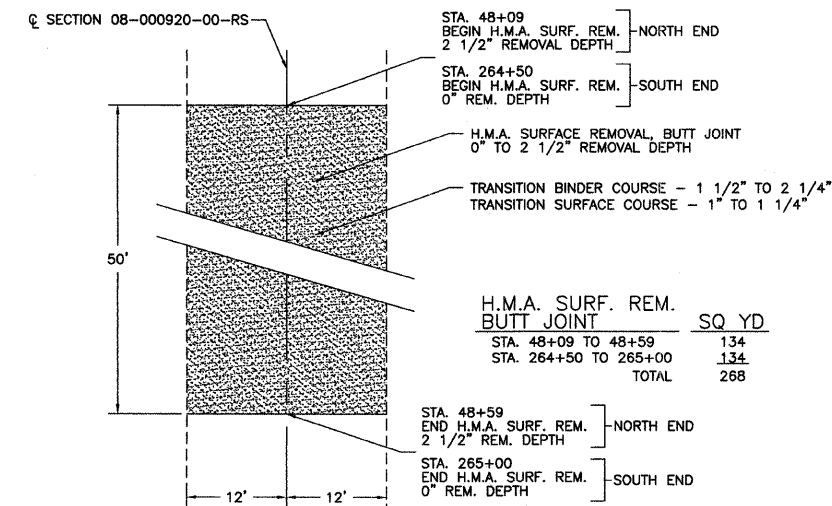
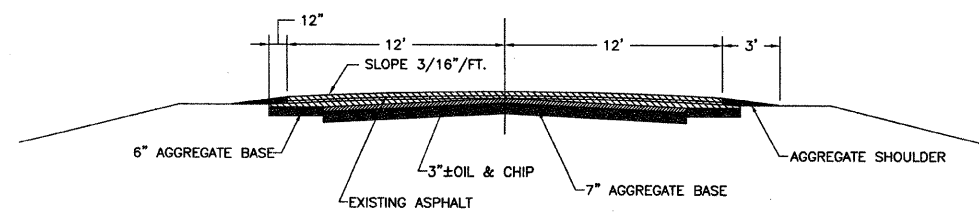
TYPICAL SECTION OF PROPOSED IMPROVEMENT



DETAIL OF SIDEROADS



TYPICAL SECTION OF EXISTING ROAD



PAINT PAVEMENT MARKING LINE 4"

CENTERLINE STRIPE  
Sta. 48+09 to 265+00.0 = 4838 Foot

EDGE LINE  
Rt. & Lt. Sta. 48+09 to 265+0 = 43,600 Foot

NO PASSING ZONE STRIPING

Rt. Sta. 48+50 to 60+00	=	1150 Foot
Lt. Sta. 48+50 to 74+00	=	2550 Foot
Rt. Sta. 76+00 to 90+00	=	1400 Foot
Lt. Sta. 88+00 to 105+00	=	1700 Foot
Rt. Sta. 228+00 to 255+00	=	2700 Foot
Lt. Sta. 240+00 to 272+00	=	3200 Foot
Total		= 12,700 Foot

STRIPING QUANTITY  
Sta. 48+09 to 265+00.0 = 61,138 Foot

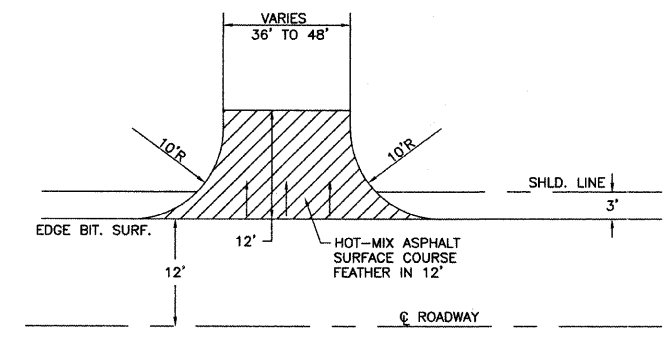
HOT-MIX ASPHALT

<u>BINDER COURSE</u>	<u>SURFACE COURSE</u>
<u>MAINLINE BINDER</u>	<u>MAINLINE SURFACE</u>
Sta. 48+09 to 265+00.0 = 7320 Ton	Sta. 48+09 to 265+00.0 = 4070 Ton
	<u>SIDEROADS</u>
	Sta. 48+09 to 265+00.0 = 330 Ton
	<u>PRIVATE ENTRANCES</u>
	Sta. 48+09 to 265+00.0 = 24 Ton
	<u>COMMERCIAL ENTRANCES</u>
	Sta. 48+09 to 265+00.0 = 190 Ton
	<u>MAILBOX TURNOUTS</u>
	Sta. 48+09 to 265+00.0 = 50 Ton
TOTAL = 4664 Ton	

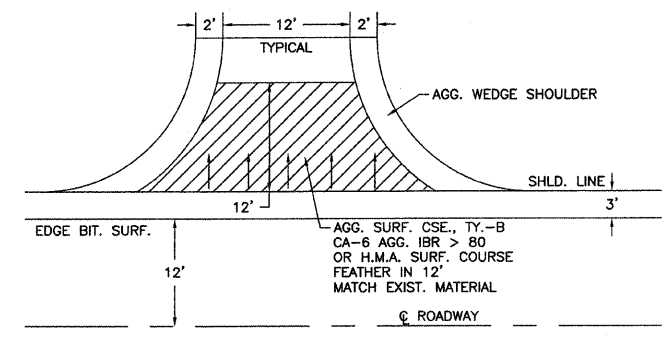
H.M.A. SURFACE REMOVAL - BUTT JOINT DETAIL

MAILBOX TURNOUT DETAIL

DETAIL OF COMMERCIAL ENTRANCES



DETAIL OF PRIVATE ENTRANCES



TOTAL PROJECT SUMMARY OF QUANTITIES

QUANTITY	UNIT	ITEM	CODE NUMBER
120	TON	AGGREGATE SURFACE COURSE, TYPE B	40200800
5932	GALLON	BITUMINOUS MATERIALS (PRIME COAT)	40600100
115	TON	AGGREGATE (PRIME COAT)	40600300
7320	TON	HOT-MIX ASPHALT BINDER COURSE, IL 19.0, N70	40603085
4664	TON	HOT-MIX ASPHALT SURFACE COURSE, MIX "C", N70	40603315
268	SQ YD	HOT-MIX ASPHALT SURFACE COURSE REMOVAL - BUTT JOINT	40600982
1450	TON	AGGREGATE WEDGE SHOULDER, TYPE B	48102100
1	L SUM	MOBILIZATION	67100100
1	L SUM	TRAFFIC CONTROL AND PROTECTION STANDARD 701306	70100460
1	L SUM	TRAFFIC CONTROL COMPLETE	70103700
4400	FOOT	SHORT - TERM PAVEMENT MARKING	70300100
726	SQ FT	WORK ZONE PAVEMENT MARKING REMOVAL	70301000
61,138	FOOT	PAINT PAVEMENT MARKING - LINE 4"	78001110*

HOT MIX ASPHALT

HOT-MIX ASPHALT SURFACE COURSE, MIXTURE "C" N70  
PG GRADE: PG 64-22  
DESIGN AIR VOIDS: 4.0% @ Ndesign 70  
MIXTURE COMPOSITION: IL-9.5  
FRICTION AGGREGATE: MIXTURE C

HOT-MIX ASPHALT BINDER COURSE, IL 19.0, N70  
PG GRADE: PG 64-22  
DESIGN AIR VOIDS: 4.0% @ Ndesign 70  
MIXTURE COMPOSITION: IL-19.0  
FRICTION AGGREGATE: N/A

HOT-MIX ASPHALT SURFACE COURSE  
9 @ 21 TON EACH = 190 TON

AGGREGATE SURFACE COURSE, TYPE B  
24 @ 5 TON EACH = 120 TON

HOT-MIX ASPHALT SURFACE COURSE  
2 @ 12 TON EACH = 24 TON

\* STA. 67+71 & 85+95