

F.A. RTE.	SECTION	COUNTY	TOTAL SHEETS	SHEET NO.
9124	05-00085-01-PP 05-00085-02-PP	MADISON	61	23
STA. 25+00		TO STA. 30+00		
FED. ROAD DIST. NO. ILLINOIS FED. AID PROJECT				

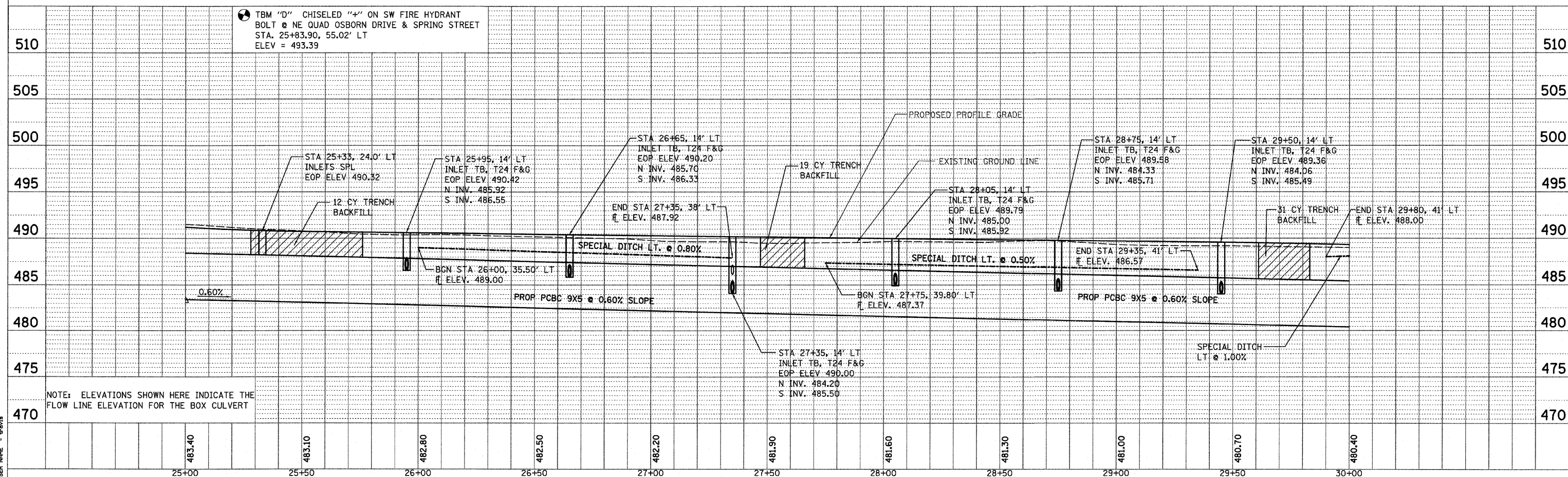
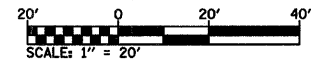
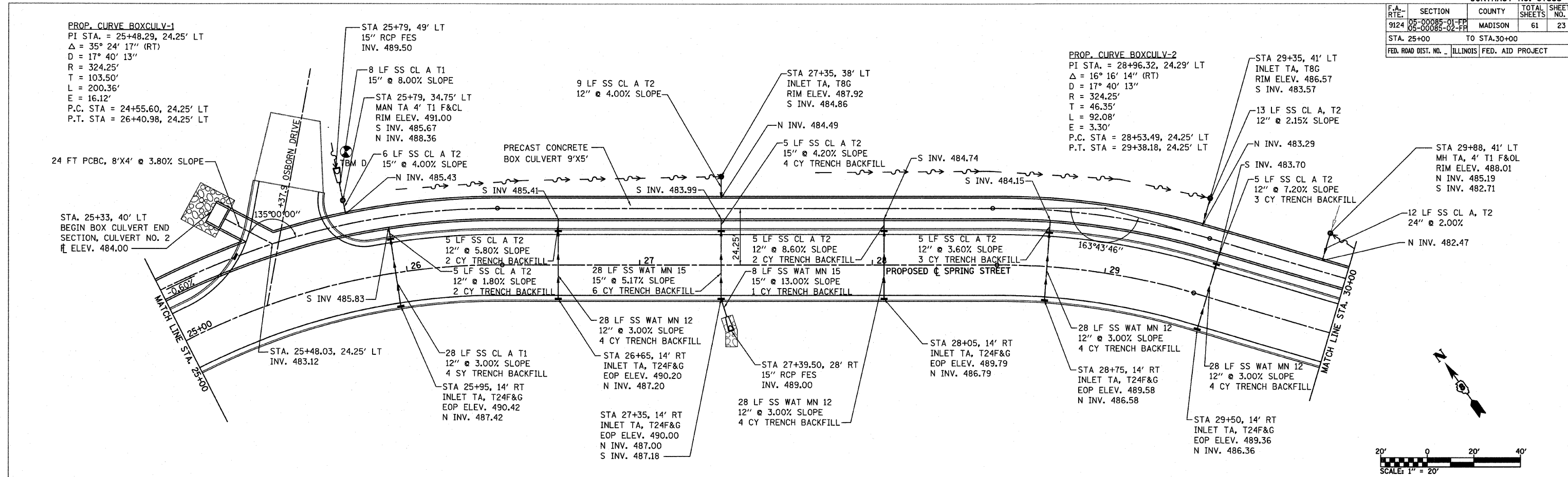
PROP. CURVE BOXCULV-1
 PI STA. = 25+48.29, 24.25' LT
 $\Delta = 35^\circ 24' 17''$ (RT)
 $D = 17^\circ 40' 13''$
 $R = 324.25'$
 $T = 103.50'$
 $L = 200.36'$
 $E = 16.12'$
 P.C. STA = 24+55.60, 24.25' LT
 P.T. STA = 26+40.98, 24.25' LT

PROP. CURVE BOXCULV-2
 PI STA. = 28+96.32, 24.29' LT
 $\Delta = 16^\circ 16' 14''$ (RT)
 $D = 17^\circ 40' 13''$
 $R = 324.25'$
 $T = 46.35'$
 $L = 92.08'$
 $E = 3.30'$
 P.C. STA = 28+53.49, 24.25' LT
 P.T. STA = 29+38.18, 24.25' LT

DATE	BY

DATE	BY

REVISIONS
 1. DATE: 3/1/2009
 2. PLOT SCALE: 1" = 20'
 3. USER NAME: bravis



DRAINAGE PLAN AND PROFILE STA 25+00 TO STA 30+00