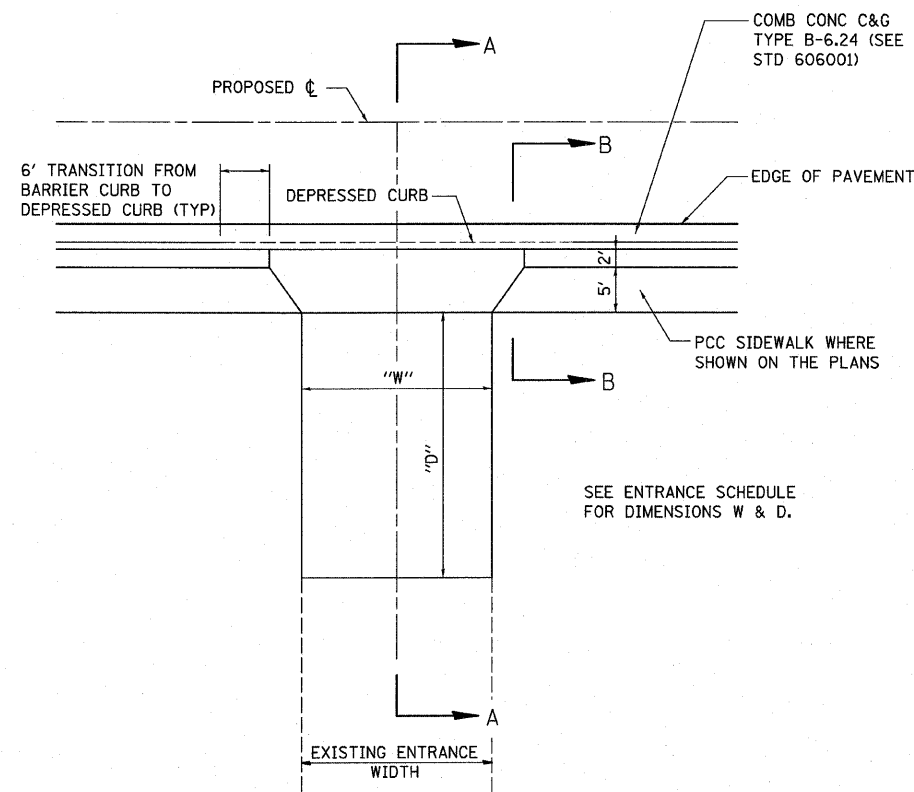
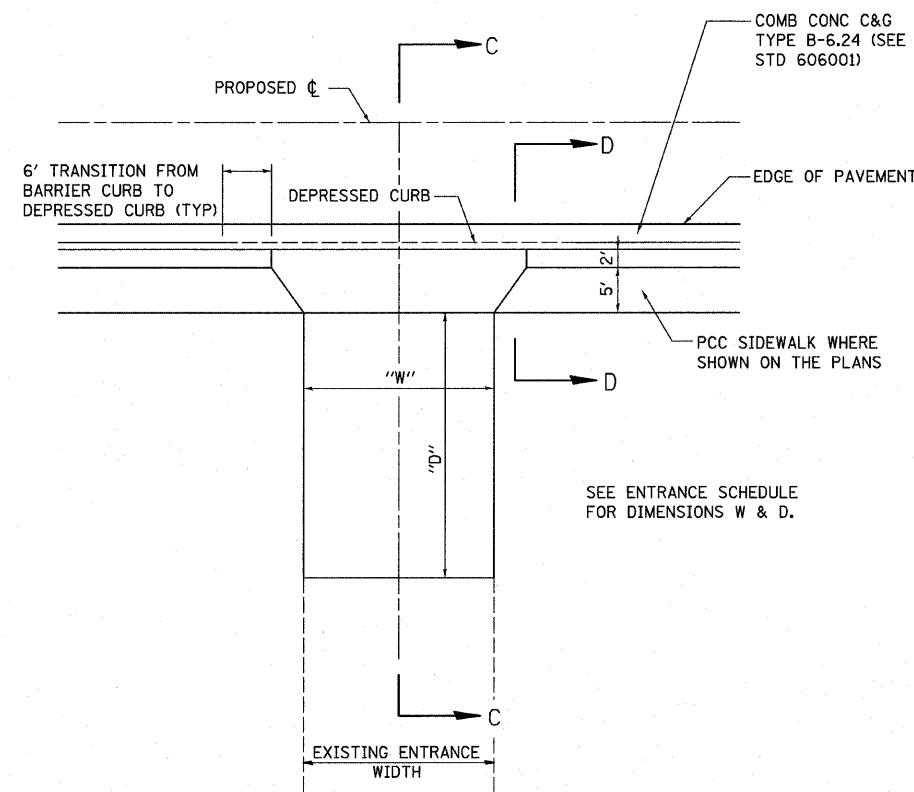


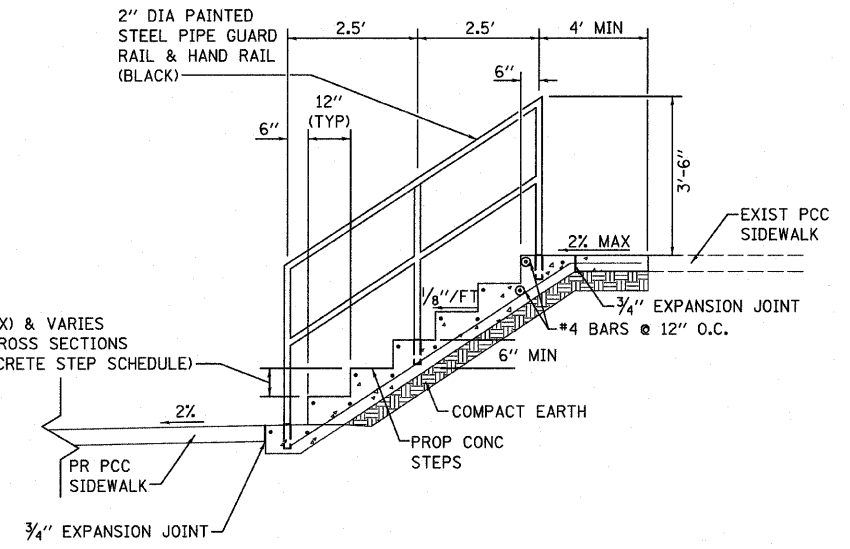
F.A. RTE.	SECTION	COUNTY	TOTAL SHEETS	SHEET NO.
9124	05-00085-01-PP 05-00085-02-PP	MADISON	61	32
STA.		TO STA.		
FED. ROAD DIST. NO.		ILLINOIS FED. AID PROJECT		



PRIVATE ENTRANCE (PE)
SCALE: NONE



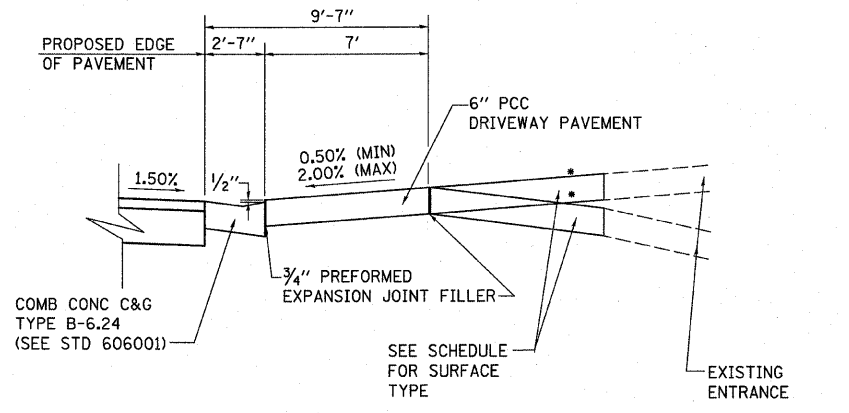
COMMERCIAL ENTRANCE (CE)



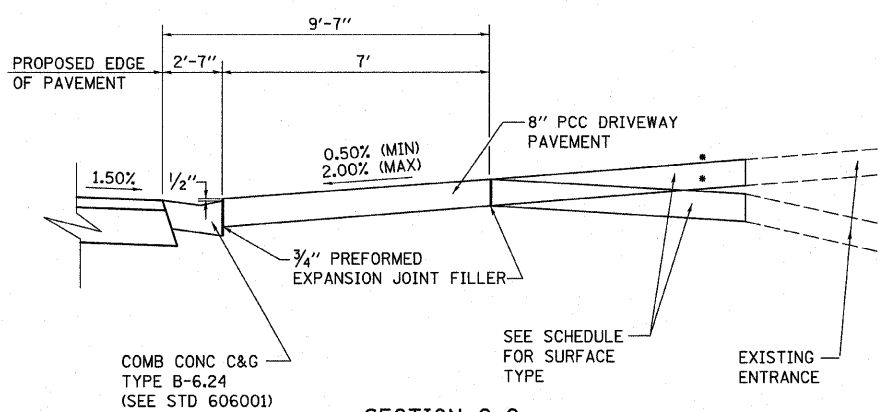
CONCRETE STEPS DETAIL
SCALE: NONE

NOTES:

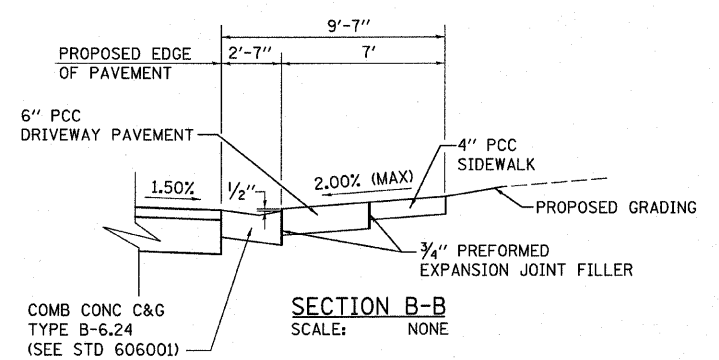
- ALL EXCAVATION, GRADING, PREPARATION OF SUBGRADE, BACKFILLING, FURNISHING, AND PLACING ALL MATERIALS INCLUDING CONCRETE, REINFORCEMENT, EXPANSION JOINTS, AND SEALANT SHALL BE INCLUDED IN THE COST FOR CONCRETE STEPS.
- RAILING WILL BE PAID FOR SEPARATELY UNDER PIPE HANDRAIL.
- DIMENSIONS FROM TREAD TO TREAD AND RISER TO RISER SHALL NOT VARY BY MORE THAN 1/4" PER SET OF STEPS. PLAN DIMENSIONS SHALL BE VERIFIED IN THE FIELD PRIOR TO CONSTRUCTION.
- REINFORCING BARS SHALL BE EPOXY COATED. REINFORCEMENT WILL NOT BE PAID FOR SEPARATELY.
- CONCRETE STEPS SHALL BE CONSTRUCTED OF CLASS SI CONCRETE.
- A MINIMUM OF 2" SHALL BE MAINTAINED BETWEEN THE FACE OF CONCRETE AND THE NEAREST EDGE OF ALL REINFORCEMENT.
- PIPE HANDRAIL REQUIRED FOR CONCRETE STEPS WITH MORE THAN 3 RISERS.



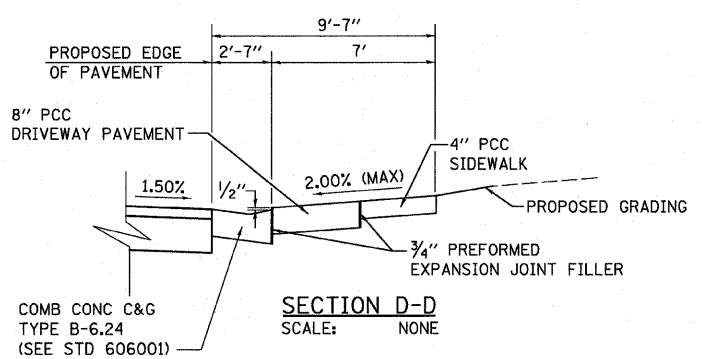
SECTION A-A
SCALE: NONE * SEE CROSS SECTIONS FOR SLOPE



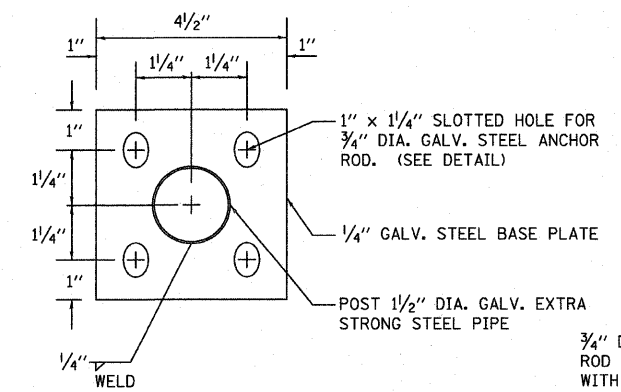
SECTION C-C
SCALE: NONE * SEE CROSS SECTIONS FOR SLOPE



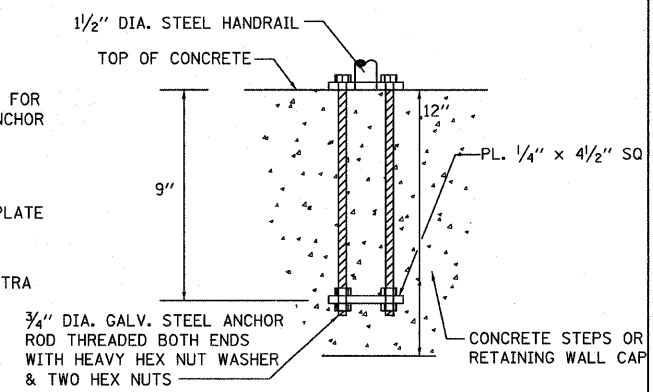
SECTION B-B
SCALE: NONE



SECTION D-D
SCALE: NONE



POST BASE PLATE DETAIL
(INCLUDED IN THE COST OF PIPE HANDRAIL)
SCALE: NONE



ANCHOR ROD DETAIL
(INCLUDED IN THE COST OF PIPE HANDRAIL)
SCALE: NONE

DATE-TIME
DGN-SPEC
REV-REF