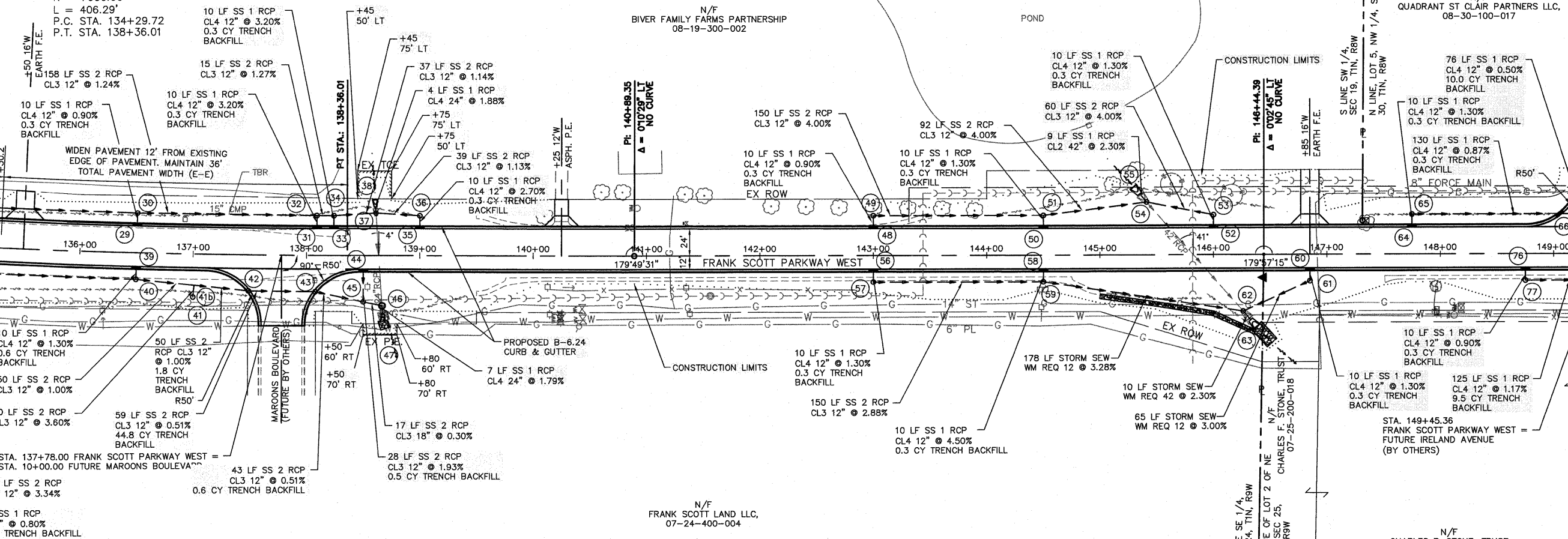


MATCHLINE STA. 135+00

MATCHLINE STA. 149+90

- 29 INLET TA T3F&G +50, 25.27' LT EOP 555.24 INV 552.60
- 30 MH TY A 4 DIA TIF CL +50, 35.27' LT LID 555.78 INV 552.51 (W) INV 551.44
- 31 INLET TA T3F&G +09.07, 25.31' LT EOP 554.02 INV 551.50
- 32 MH TY A 4 DIA TIF CL +09.07, 35.29' LT LID 554.55 INV 551.18 (W) INV 549.48
- 33 INLET TA T3F&G +24.12, 25.31' LT EOP 554.05 INV 551.50
- 34 MH TY A 4 DIA TIF CL +24.15, 35.29' LT LID 554.58 INV 551.18 (E) INV 549.29
- 35 INLET TA T3F&G +00, 25.28' LT EOP 554.14 INV 551.51
- 36 MH TY A 4 DIA TIF CL +00, 35.29' LT LID 554.65 INV 551.24 (W) INV 549.31
- 37 MH TY A 4 DIA TIF CL +61.24, 37.66' LT LID 554.59 INV 548.87
- 38 REM & REIN END SECT +60.46, 49.50' LT INV 550.28
- 48 INLET TA T3F&G +00, 25.27' LT EOP 552.02 INV 549.38
- 49 MH TY A 4 DIA TIF CL +00, 35.27' LT LID 552.55 INV 549.29 (W) INV 548.58
- 50 INLET TA T3F&G +50, 25.27' LT EOP 548.07 INV 545.43
- 51 MH TY A 4 DIA TIF CL +50, 35.27' LT LID 548.60 INV 545.30 (W) INV 542.58
- 52 INLET TA T3F&G +00, 25.29' LT EOP 545.69 INV 543.06
- 53 MH TY A 4 DIA TIF CL +00, 35.29' LT LID 546.22 INV 542.93 (W) INV 541.30
- 54 MH TY A 5 DIA TIF CL +41.07, 46.77' LT LID 543.31 INV 538.90 (N&S) INV 537.14
- 55 REM & REIN END SECT +36.00, 80.90' LT INV 537.52
- 64 INLET TA T3F&G +75, 25.29' LT LID 544.46 INV 542.30
- 65 MH TY A 4 DIA TIF CL +75, 35.29' LT LID 544.99 INV 542.17 (E) INV 541.78
- 66 INLET TA T3F&G +05.25, 35.29' LT EOP 543.36 INV 540.65
- 67 INLET TA T3F&G +81.49, 35.29' LT EOP 542.84 INV 540.27

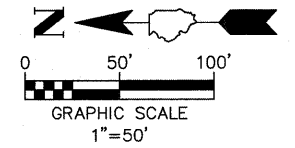
EXISTING CURVE DATA  
 P.I. STA. 136+32.92  
 $\Delta = 3^{\circ}19'32''$   
 $T = 203.20'$   
 $R = 7000.00'$   
 $L = 406.29'$   
 P.C. STA. 134+29.72  
 P.T. STA. 138+36.01



CP# 20 IRON BAR  
 STA 139+88.07, 26.01' LT  
 ELEV. 556.29

CP# 21 IRON BAR  
 STA. 149+68.11, 30.29' RT  
 ELEV. 543.49

- 39A INLET TA T3F&G +00, 13.28' RT EOP 557.20 INV 554.56
- 39B MH TY A 4 DIA TIF CL +00, 23.27' RT LID 557.74 INV 554.48 (E) INV 553.67
- 39 INLET TA T3F&G +50, 13.28' RT EOP 555.35 INV 552.27
- 40 MH TY A 4 DIA TIF CL +50, 23.27' RT LID 555.88 INV 552.14 (E) INV 548.66
- 41 INLET TB T8G +00, 37.90' RT EOP 550.97 INV 548.52
- 41b RC PIPE TEE 12P 12R +00, 27.35' RT INV 548.16
- 42 MH TY A 4 DIA T3F&G +49.02, 31.70' RT EOP 553.93 INV 547.66
- 43 MH TY A 4 DIA T3F&G +07.81, 31.96' RT EOP 553.73 INV 547.36
- 44 INLET TA T3F&G +50, 13.27' RT EOP 554.17 INV 549.55
- 45 MH TY A 4 DIA TIF CL +50, 48.80' RT LID 552.06 INV 549.01 (E) INV 547.14
- 46 MH TY A 4 DIA TIF CL +66.66, 44.31' RT LID 550.85 INV 547.09
- 47 REM & REIN END SECT +67.56, 57.70' RT INV 546.84
- 56 INLET TA T3F&G +00, 13.27' RT EOP 552.26 INV 549.63
- 57 MH TY A 4 DIA TIF CL +00, 23.27' RT LID 552.84 INV 549.50 (E) INV 547.68
- 58 INLET TA T3F&G +50, 13.29' RT EOP 548.31 INV 545.68
- 59 MH TY A 4 DIA TIF CL +50, 23.29' RT LID 548.84 INV 545.23 (E) INV 543.36
- 60 INLET TA T3F&G +85, 13.29' RT EOP 545.33 INV 542.70
- 61 MH TY A 4 DIA TIF CL +85, 23.29' RT LID 545.86 INV 542.57 (E) INV 539.48
- 62 MH TY A 5 DIA TIF CL +26.15, 50.03' RT LID 540.69 INV 537.53 (N&S) INV 534.14
- 63 REM & REIN END SECT +38.67, 63.92' RT INV 533.71
- 76 INLET TA T3F&G +85, 13.29' RT EOP 544.00 INV 541.36
- 77 MH TY A 4 DIA TIF CL +85, 23.29' RT LID 544.46 INV 541.27 (E) INV 540.65



FILE NAME = 759MN01.DWG	USER NAME = SAM WRIGLEY	DESIGNED - SSM	REVISED -	<b>CITY OF BELLEVILLE, ILLINOIS</b> 101 S. Illinois Street Belleville, IL 62220-2105	<b>FRANK SCOTT PARKWAY WEST</b> <b>PLAN &amp; PROFILE SHEETS</b>		F.A.U. RTE. 9256	SECTION 09-00212-00-CG	COUNTY ST. CLAIR	TOTAL SHEETS 90	SHEET NO. 12	
PLOT SCALE = 1" = 1'	CHECKED - AJG	REVISIED -	REVISIED -		SCALE:	SHEET NO. ___ OF ___ SHEETS	STA. 134+50 TO STA. 149+50	CONTRACT NO. 97379				
PLOT DATE = 2009-04-30	DATE - 2009-01-30	REVISIED -	REVISIED -		FED. ROAD DIST. NO. ILLINOIS FED. AID PROJECT							