

MATCHLINE STA. 194+90

N/F
THE REHKEMPER FAMILY PARTNERSHIP, L.P. THOMAS
J. REHKEMPER AND RITA M. REHKEMPER, TRUSTEES
08-30-300-007

10 LF SS 1 RCP
CL4 12" @ 3.30%
0.3 CY TRENCH BACKFILL

100 LF SS 1 RCP
CL4 12" @ 0.53%

10 LF SS 1 RCP
CL4 12" @ 1.80%
0.3 CY TRENCH BACKFILL

10 LF STORM SEW
WM REQ 12 @ 3.30%
0.3 CY TRENCH BACKFILL

3 LF STORM SEW
WM REQ 12 @ 1.36%

125 LF STORM SEW
WM REQ 12 @ 0.30%

N/F
DONALD & DIANNE WIGGINS
07-25-400-015

CP# 26 IRON BAR
STA 199+34.82, 31.45' LT
ELEV. 545.86

2 CENTER CURVE
60' - 250'
13' OFFSET

2 CENTER CURVE
60' - 250'
11' OFFSET

2 CENTER CURVE
45' - 220'
15' OFFSET

2 CENTER CURVE
55' - 275'
15' OFFSET

(201) INLET TA T3F&G
+00, 19.27' LT
EOP 546.38
INV 543.50

(202) MH TY A 4 DIA TIF CL
+00, 29.27' LT
LID 546.91
INV 543.17

(203) INLET TA T3F&G
+00, 19.27' LT
EOP 546.68
INV 544.54

(204) MH TY A 4 DIA TIF CL
+00, 29.27' LT
LID 547.21
INV 544.36 (W)
INV 543.70

N/F
JOSEPH JAMES GUETTERMAN &
JOLENE ANN MEYER
08-31-100-005

N/F
DONALD & DIANNE WIGGINS
07-25-400-015

(177) RC PIPE TEE 12P 12R
+50, 29.29' RT
INV 542.97

(178) INLET TA T3F&G
+50, 19.29' RT
EOP 546.23
INV 543.90

(179) MH TY A 4 DIA TIF CL
+75, 29.29' RT
LID 547.12
INV 543.92 (E)
INV 543.35

(180) INLET TA T3F&G
+75, 19.29' RT
EOP 546.61
INV 544.25

(181) PRC FLAR END SEC 12
+83.19, 39.98' RT
INV 543.50

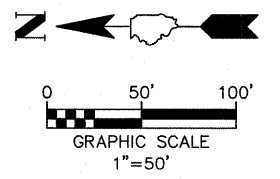
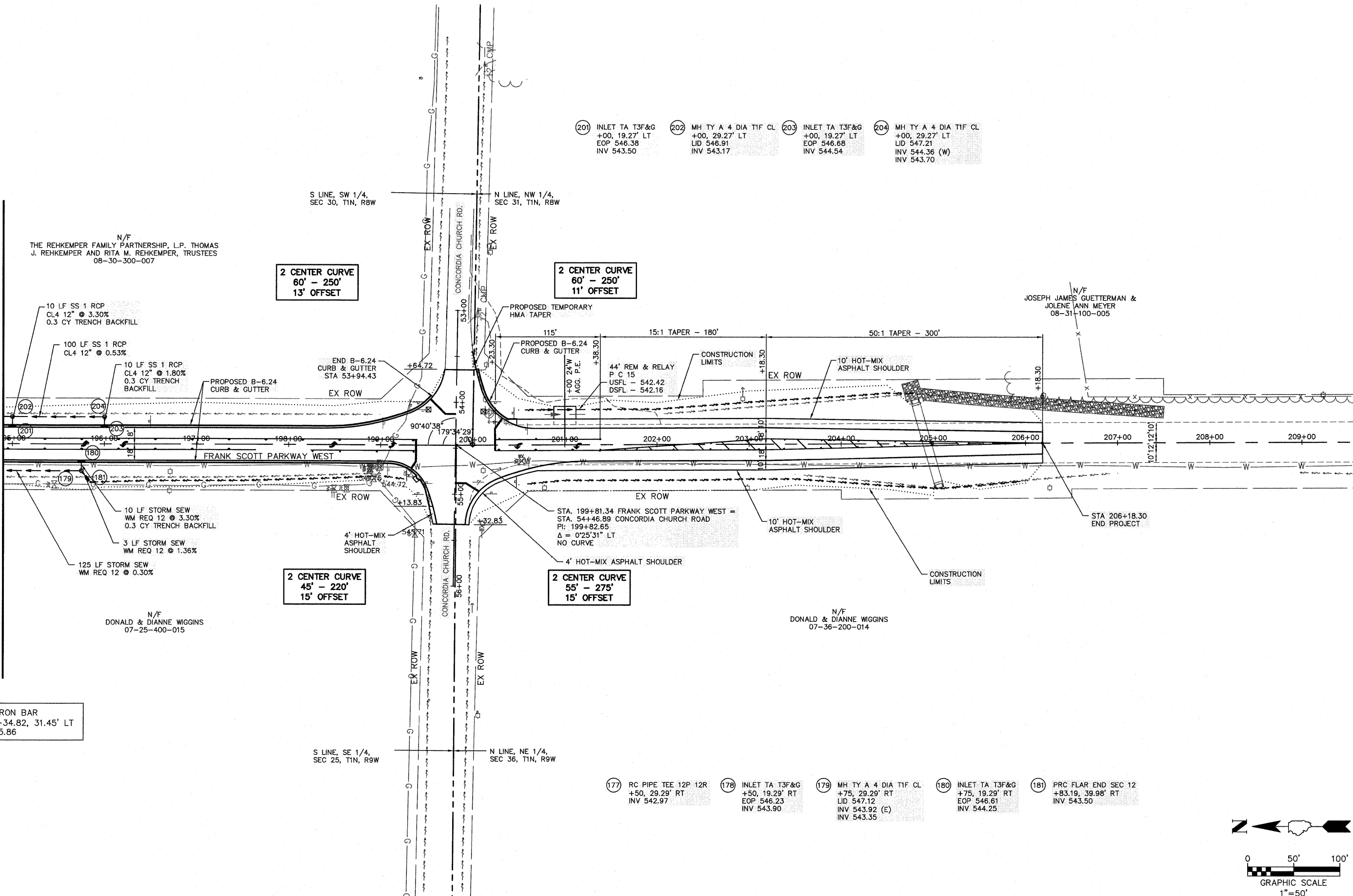
S LINE, SW 1/4,
SEC 30, T1N, R8W

N LINE, NW 1/4,
SEC 31, T1N, R8W

S LINE, SE 1/4,
SEC 25, T1N, R9W

N LINE, NE 1/4,
SEC 36, T1N, R9W

CONCORDIA CHURCH RD.



FILE NAME = 759MN01.DWG	USER NAME = SAM WRIGLEY	DESIGNED - SSM	REVISED -	CITY OF BELLEVILLE, ILLINOIS 101 S. Illinois Street Belleville, IL 62220-2105	FRANK SCOTT PARKWAY WEST PLAN & PROFILE SHEETS	F.A.U. RTE. 9256	SECTION 09-00212-00-CG	COUNTY ST. CLAIR	TOTAL SHEETS 90	SHEET NO. 20	
PLOT SCALE = 1" = 1'	CHECKED - AJG	DATE - 2009-01-30	REVISED -			SCALE:	SHEET NO. ___ OF ___ SHEETS	STA. 194+50 TO STA. 209+00	CONTRACT NO. 97379		
PLOT DATE = 2009-04-30	DATE - 2009-01-30	REVISED -						FED. ROAD DIST. NO. ILLINOIS FED. AID PROJECT			