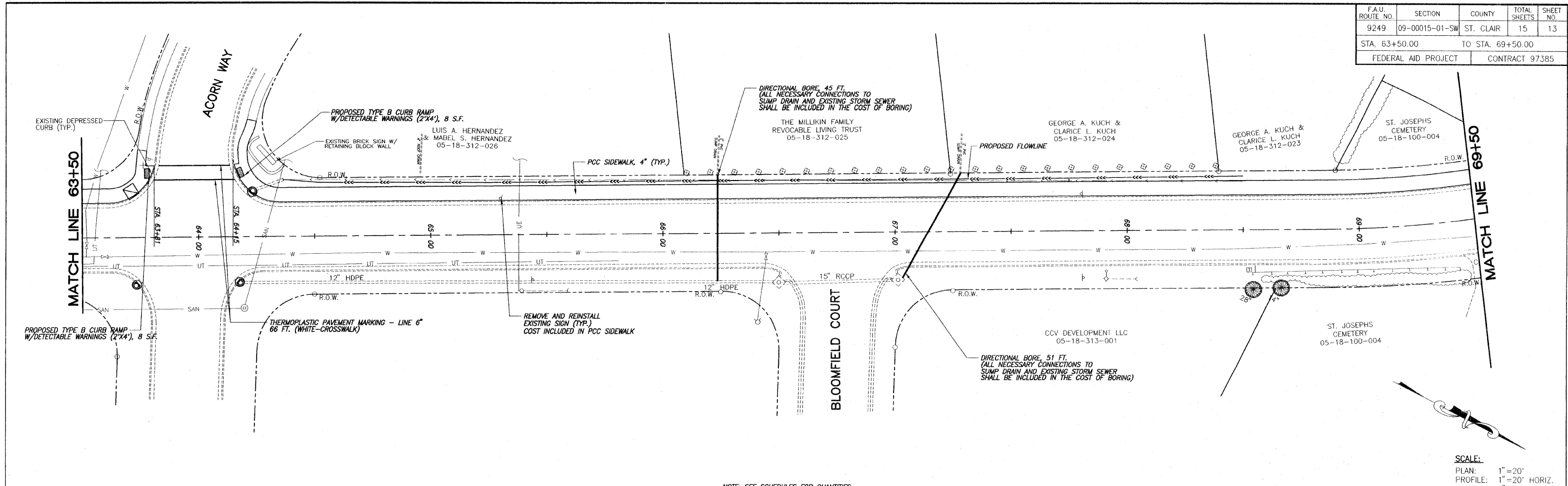
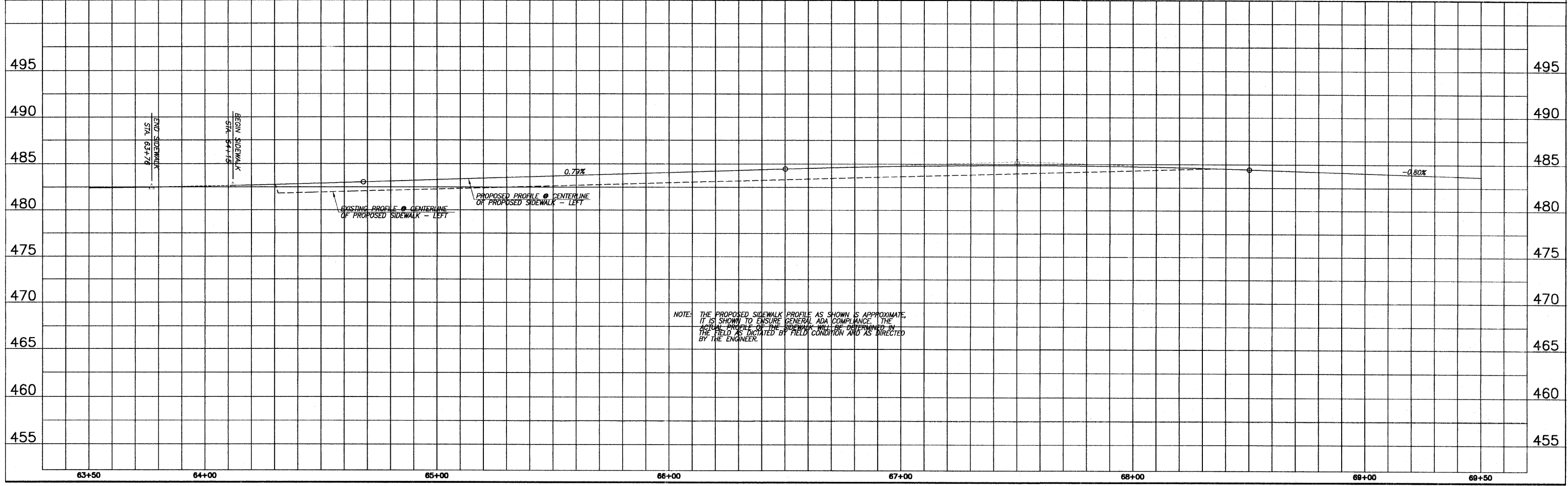


F.A.U. ROUTE NO.	SECTION	COUNTY	TOTAL SHEETS	SHEET NO.
9249	09-00015-01-SW	ST. CLAIR	15	13
STA. 63+50.00		TO STA. 69+50.00		
FEDERAL AID PROJECT			CONTRACT 97385	



NOTE: SEE SCHEDULES FOR QUANTITIES

SCALE:  
 PLAN: 1" = 20'  
 PROFILE: 1" = 20' HORIZ.  
 1" = 5' VERT.



NOTE: THE PROPOSED SIDEWALK PROFILE AS SHOWN IS APPROXIMATE. IT IS SHOWN TO ENSURE GENERAL ADA COMPLIANCE. THE ACTUAL PROFILE OF THE SIDEWALK WILL BE DETERMINED IN THE FIELD AS DICTATED BY FIELD CONDITION AND AS DIRECTED BY THE ENGINEER.

E:\1039 - Lebanon - Monroe Street Sidewalk\1039FP\_10.dwg, 3/22/2019 2:24:36 PM, Plotted by A.A.S.