

STATE OF ILLINOIS  
DEPARTMENT OF TRANSPORTATION  
DIVISION OF HIGHWAYS

PLANS FOR PROPOSED  
LOCAL AGENCY PROJECT

FAU ROUTE 9249 (MONROE STREET)  
SECTION 09-00015-01-SW  
PROJECT NO. ARA-5011(279)  
CITY OF LEBANON, ILLINOIS  
ST. CLAIR COUNTY  
JOB NO. C-98-365-09

F.A.U. ROUTE NO.	SECTION	COUNTY	TOTAL SHEETS	SHEET NO.
9249	09-00015-01-SW	ST. CLAIR	15	1
STA. 10+00.00		TO STA. 79+10.00		
FEDERAL AID PROJECT		CONTRACT 97385		

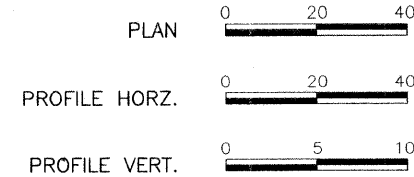
INDEX OF SHEETS

- COVER SHEET
- SUMMARY OF QUANTITIES, GENERAL NOTES & DETAILS
- TYPICAL SECTIONS & SCHEDULES
- 4.-15. PLAN AND PROFILE SHEETS

APPLICABLE IDOT HIGHWAY STANDARDS:

424001-05  
606001-04  
701501-05  
701801-04  
701901-01  
720011-01  
729001-01  
BLR 18-5

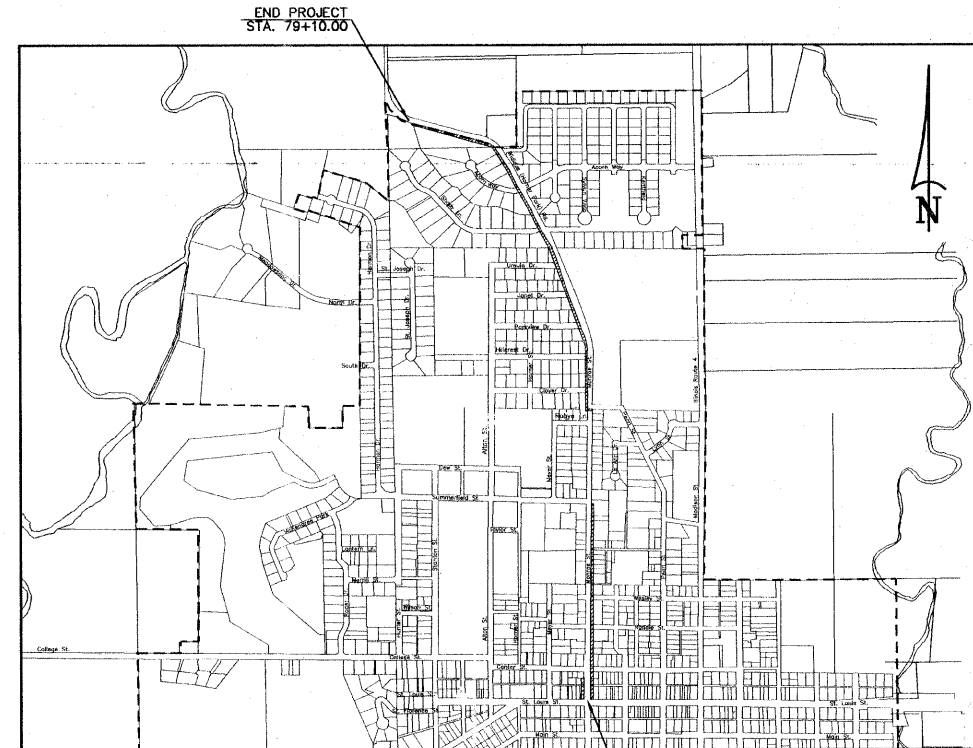
SCALES:



UTILITY TYPE	NAME OF UTILITY	PHONE NUMBER
ELECTRIC	AMEREN IP	1-800-755-5000
GAS	AMEREN IP	1-800-755-5000
WATER	CITY OF LEBANON	1-618-537-4976
TELEPHONE	AT&T	1-800-480-8088
CABLE	CHARTER COMMUNICATIONS	1-888-438-2427
SANITARY SEWER	CITY OF LEBANON	1-618-537-4976

MONROE STREET

ROADWAY DESIGNATION: URBAN COLLECTOR  
DESIGN SPEED: 30 M.P.H.  
DESIGN YEAR: (2017) ADT: 2415



LOCATION MAP  
NOT TO SCALE

LENGTH OF IMPROVEMENT 6,910 FT.=1.309 MI.



STATE OF ILLINOIS  
DEPARTMENT OF TRANSPORTATION

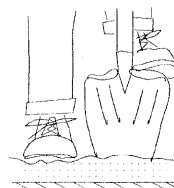
APPROVED 5/21/09  
DATE  
Scott Abner  
SCOTT ABNER, MAYOR

PASSED 6/3/09  
DATE  
John C. M... ..  
DISTRICT 8 ENGINEER OF LOCAL ROADS & STREETS

RELEASED FOR BID  
BASED ON LIMITED REVIEW 6/3/09  
DATE  
Mary C. Lamie, P.E.  
MARY C. LAMIE, P.E.  
DEPUTY DIRECTOR OF HIGHWAYS  
REGION FIVE ENGINEER

HOLD IT ! CALL BEFORE YOU DIG !

Phone J.U.L.I.E.



Underground Cable

The owner would like to remind you that underground utility facilities can be damaged by shovel blades or other digging equipment. You can prevent damage or possible personal danger by phoning 800/892-0123 at least 48 hours before you dig. That's the toll-free number for "J.U.L.I.E.", which stands for Joint Utilities Location Information for Excavators.

If there are any pipes, cables, lines or mains in the excavation area, utility personnel will be out to mark the facilities so you can work around them.

Toll Free 800/892-0123

PREPARED BY:

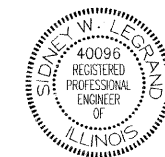


RHUTASEL and ASSOCIATES, INC.

CONSULTING ENGINEERS • LAND SURVEYORS

CORPORATE OFFICE  
4 INDUSTRIAL DRIVE  
FREEBURG, ILLINOIS 62243  
(618) 539-3178

REGIONAL OFFICE  
201 SOUTH LOCUST STREET  
CENTRALIA, ILLINOIS 62801  
(618) 532-1992



Sidney W. Legrand  
Date of Signing 5/20/09  
Date of License Expiration 11/30/09

## SUMMARY OF QUANTITIES

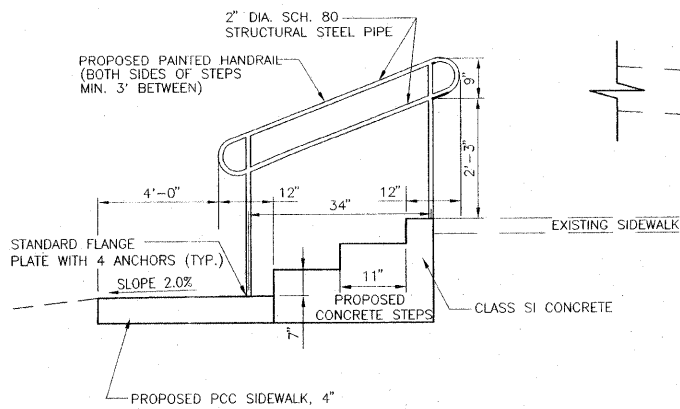
CODE NUMBER	ITEM DESCRIPTION	UNIT	QUANTITY	CONSTRUCTION CODE
				<b>SFTY-1B</b>
25000100	SEEDING, CLASS 1	ACRE	0.7	0.7
25000400	NITROGEN FERTILIZER NUTRIENT	POUND	63	63
25000500	PHOSPHORUS FERTILIZER NUTRIENT	POUND	63	63
25000600	POTASSIUM FERTILIZER NUTRIENT	POUND	63	63
25100115	MULCH, METHOD 2	ACRE	0.7	0.7
40200800	AGGREGATE SURFACE COURSE, TYPE B	TON	20	20
40800050	INCIDENTAL HOT-MIX ASPHALT SURFACING	TON	7	7
42300200	PORTLAND CEMENT CONCRETE DRIVEWAY PAVEMENT, 6 INCH	SQ YD	234	234
42400100	PORTLAND CEMENT CONCRETE SIDEWALK 4 INCH	SQ FT	28,680	28,680
42400800	DETECTABLE WARNINGS	SQ FT	140	140
44000200	DRIVEWAY PAVEMENT REMOVAL	SQ YD	223	223
44000500	COMBINATION CURB AND GUTTER REMOVAL	FOOT	62	62
44000600	SIDEWALK REMOVAL	SQ FT	5,191	5,191
50901760	PIPE HANDRAIL	FOOT	18	18
550A0120	STORM SEWERS, CLASS A, TYPE 1 24"	FOOT	12	12
60265700	VALVE VAULTS TO BE ADJUSTED	EACH	2	2
60604400	COMBINATION CONCRETE CURB AND GUTTER, TYPE B-6.18	FOOT	62	62
67100100	MOBILIZATION	L SUM	1	1
70101700	TRAFFIC CONTROL AND PROTECTION	L SUM	1	1
72000100	SIGN PANEL - TYPE 1	SQ FT	33	33
72900100	METAL POST - TYPE A	FOOT	48	48
* 78000400	THERMOPLASTIC PAVEMENT MARKING - LINE 6"	FOOT	1,115	1,115
* 78000650	THERMOPLASTIC PAVEMENT MARKING - LINE 24"	FOOT	30	30
78001130	PAINT PAVEMENT MARKING - LINE 6"	FOOT	48	48
X0322923	SEGMENTAL CONCRETE BLOCK WALL	SQ FT	261	261
XX001464	ROOF DRAIN GUTTER OUTLET	EACH	4	4
* XX007242	DIRECTIONAL BORE	FOOT	96	96
Z0012450	CONCRETE STEPS	CU YD	1.5	1.5

\* SPECIALTY ITEM

### GENERAL NOTES

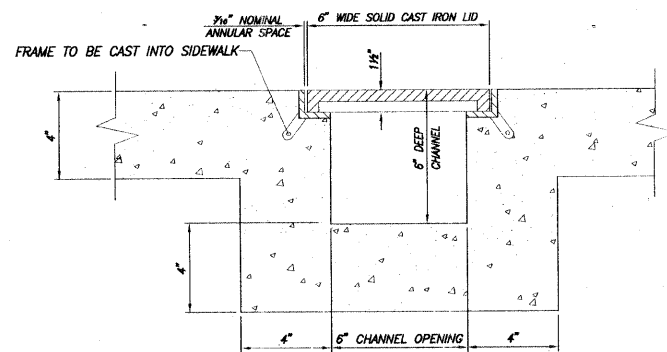
- 1.) ALL CONSTRUCTION SHALL BE ACCORDING TO THE ILLINOIS DEPARTMENT OF TRANSPORTATION STANDARD SPECIFICATIONS FOR ROAD AND BRIDGE CONSTRUCTION, ADOPTED JANUARY 1, 2007.
- 2.) UNDERGROUND FACILITIES, STRUCTURES AND UTILITIES HAVE BEEN PLOTTED FROM AVAILABLE SURVEYS AND RECORDS. THEIR LOCATIONS MUST BE CONSIDERED TO BE APPROXIMATE ONLY. IT IS POSSIBLE THERE MAY BE OTHERS. THE EXISTENCE OF WHICH IS NOT PRESENTLY KNOWN OR SHOWN. IT IS THE CONTRACTOR'S RESPONSIBILITY TO DETERMINE THEIR EXISTENCE AND EXACT LOCATION AND TO AVOID DAMAGE THERETO. FIELD LOCATIONS OF UNDERGROUND FACILITIES MAY BE OBTAINED BY CALLING THE J.U.L.I.E. SYSTEM AT 800-892-0123 AND PROVIDING 48 HOURS ADVANCE NOTICE. NON-J.U.L.I.E. MEMBERS MAY BE CONTACTED DIRECTLY. AGENCIES KNOWN TO HAVE FACILITIES WITHIN THE PROJECT LIMITS ARE LISTED ON THE COVER SHEET.
- 3.) THE UTILITY COMPANIES LISTED ON THE COVER SHEET MAY HAVE FACILITIES LOCATED WITHIN THE LIMITS OF CONSTRUCTION WHICH MAY REQUIRE ADJUSTMENT, RELOCATION OR REMOVAL. IT IS UNDERSTOOD AND AGREED THAT THE CONTRACTOR HAS TAKEN THIS FACT INTO CONSIDERATION IN PREPARING HIS/HER BID AND NO ADDITIONAL COMPENSATION WILL BE ALLOWED FOR ANY DELAYS OR INCONVENIENCE CAUSED BY SAME.
- 4.) A QUANTITY OF 20 TONS OF AGGREGATE SURFACE COURSE, TYPE B HAS BEEN INCLUDED IN THE PLANS FOR THE PURPOSE OF MISCELLANEOUS DRIVEWAY REPAIR.
- 5.) THE COST FOR FURNISHED EXCAVATION AND EARTH EXCAVATION NECESSARY TO COMPLETE THE WORK AS SHOWN ON THE PLANS AND AS DIRECTED BY THE ENGINEER SHALL BE INCLUDED IN THE COST OF THE CONTRACT. THE TOP 6 INCHES OF ALL NECESSARY BACKFILL SHALL BE FREE FROM ANY ROCKS OR FOREIGN DEBRIS.
- 6.) ALL PROPOSED EMBANKMENT SHALL BE BENCHED INTO THE EXISTING SLOPES TO THE SATISFACTION OF THE ENGINEER.
- 7.) THE CONTRACTOR SHALL VERIFY ALL DIMENSIONS AND CONDITIONS IN THE FIELD PRIOR TO ORDERING OF MATERIALS AND CONSTRUCTION.
- 8.) ALL EARTH SURFACES DISTURBED BY CONSTRUCTION SHALL BE SEEDDED AS DIRECTED BY THE ENGINEER. SEEDING OUTSIDE RIGHT-OF-WAY WILL BE AT THE CONTRACTOR'S EXPENSE.
- 9.) THE FOLLOWING RATES OF APPLICATION HAVE BEEN USED IN CALCULATING PLAN QUANTITIES.

APPLICATION RATES	
MULCH METHOD 2	2 Tons/acre
NITROGEN FERTILIZER NUTRIENT	90 Lbs/acre
PHOSPHORUS FERTILIZER NUTRIENT	90 Lbs/acre
POTASSIUM FERTILIZER NUTRIENT	90 Lbs/acre



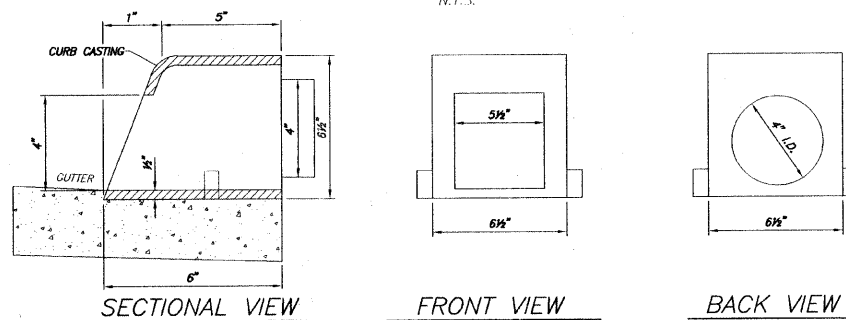
**PROPOSED CONCRETE STEPS**

N.T.S.



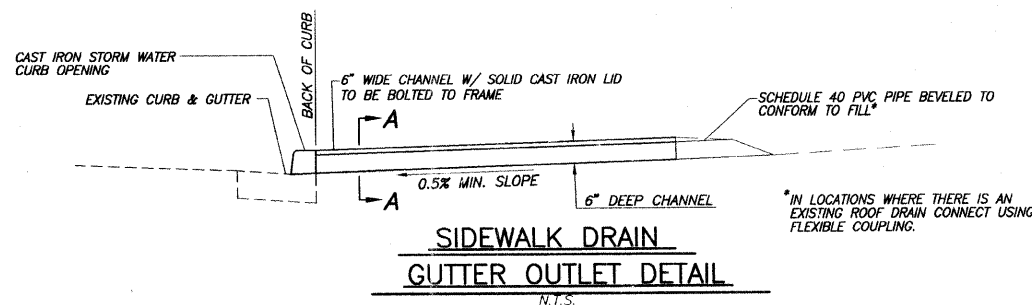
**SECTION A-A**

N.T.S.



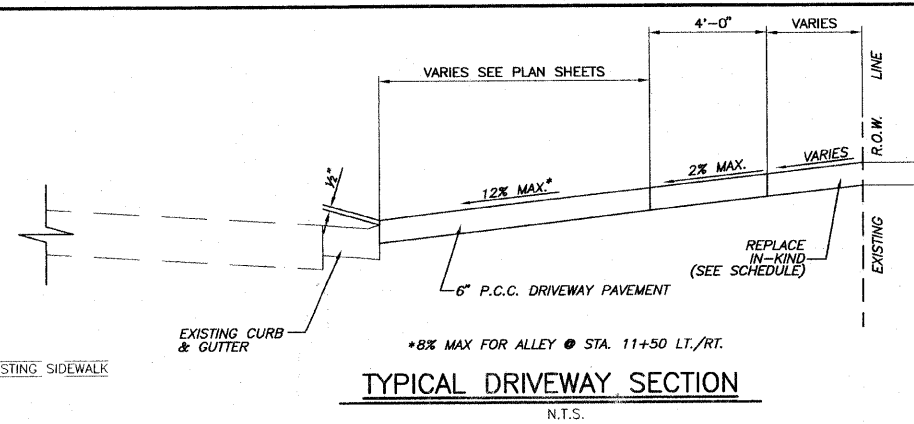
**STORM WATER CURB OPENING**

N.T.S.



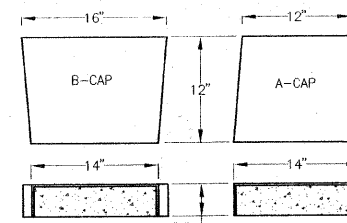
**SIDEWALK DRAIN  
GUTTER OUTLET DETAIL**

N.T.S.



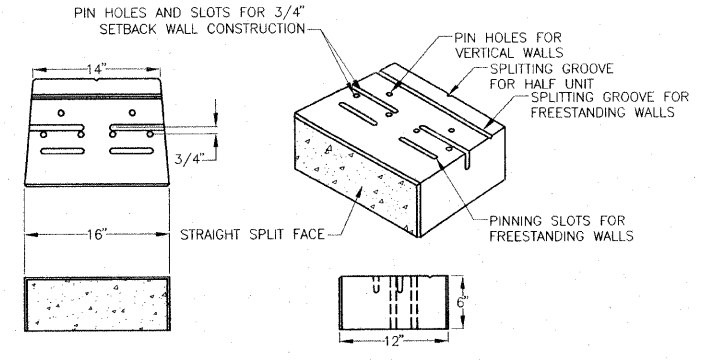
**TYPICAL DRIVEWAY SECTION**

N.T.S.



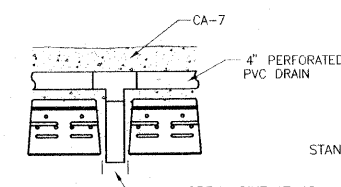
**CAP BLOCK**

N.T.S.



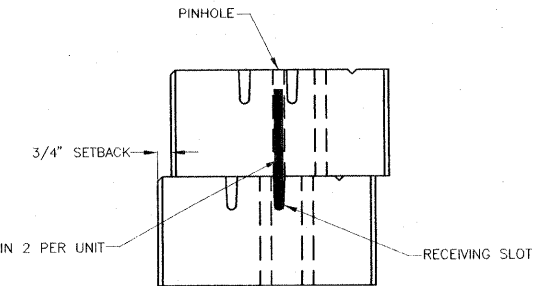
**STANDARD UNIT**

N.T.S.



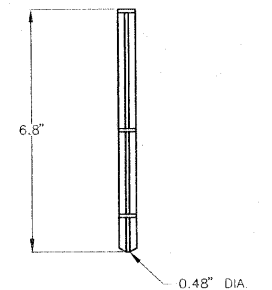
**DRAIN DETAIL**

N.T.S.



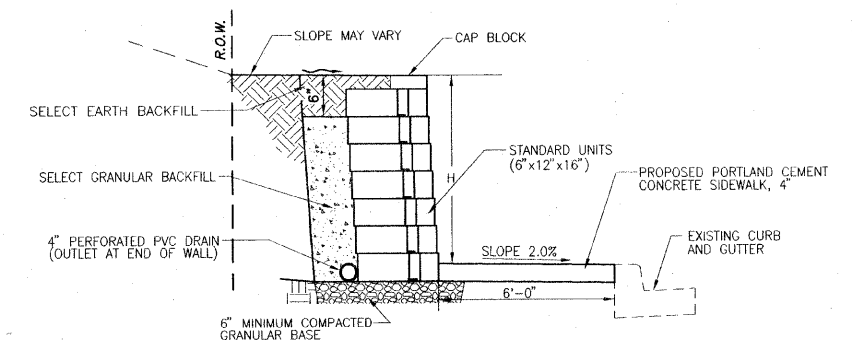
**PINNING DETAIL**

N.T.S.



**STANDARD PIN**

N.T.S.



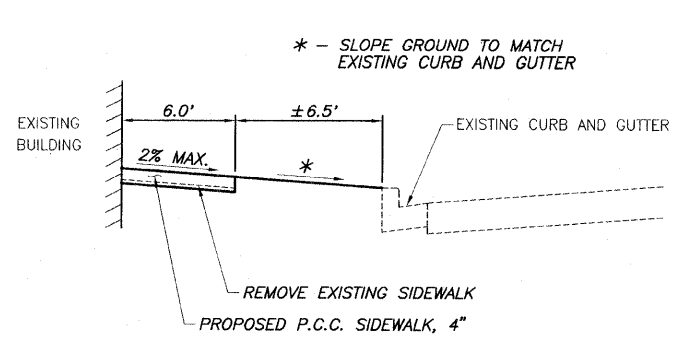
**SEGMENTAL CONCRETE BLOCK WALL DETAIL**

N.T.S.

NOTE: DRIVEWAYS SHALL MATCH EXISTING WIDTH BEHIND SIDEWALK AND SHALL FLARE OUT TO EXISTING CURB ROLL DOWNS.

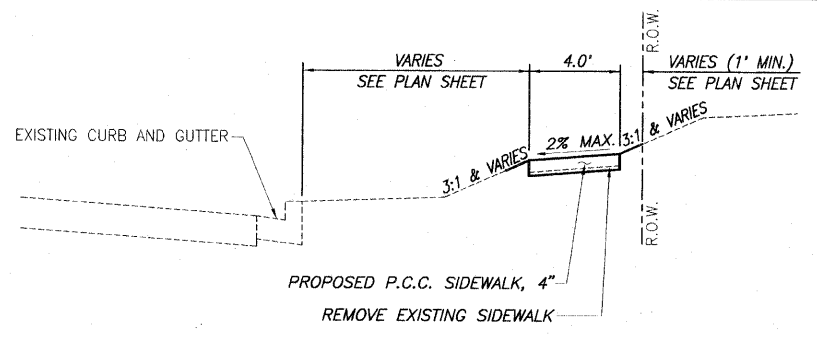
F.A.U. ROUTE NO.	SECTION	COUNTY	TOTAL SHEETS	SHEET NO.
9249	09-00015-01-SW	ST. CLAIR	15	2
STA. 10+00.00		TO STA. 79+10.00		
FEDERAL AID PROJECT		CONTRACT 97385		

F.A.U. ROUTE NO.	SECTION	COUNTY	TOTAL SHEETS	SHEET NO.
9249	09-00015-01-SW	ST. CLAIR	15	3
STA. 10+00.00		TO STA. 79+10.00		
FEDERAL AID PROJECT		CONTRACT 97385		



**TYPICAL SECTION - STA. 10+11.25 TO STA. 10+68.00 LT.**

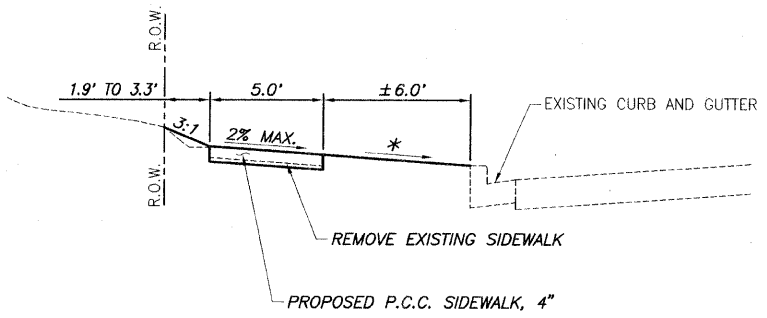
Scale: 1"=4' (Horizontal)  
1"=2' (Vertical)



**TYPICAL SECTION**

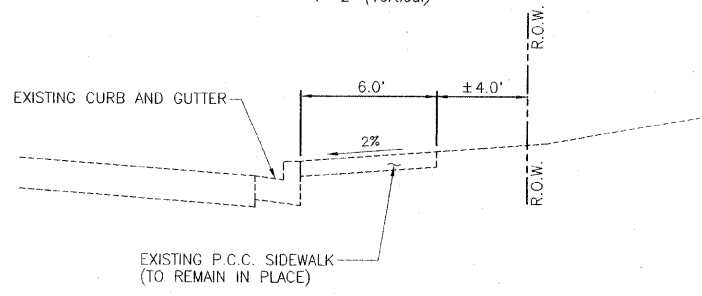
**STA. 10+05.25 TO STA. 19+30.00 RT.**  
**STA. 23+35.00 TO STA. 25+72.00 RT.**  
**STA. 28+87.00 TO STA. 30+85.00 RT.**

Scale: 1"=4' (Horizontal)  
1"=2' (Vertical)



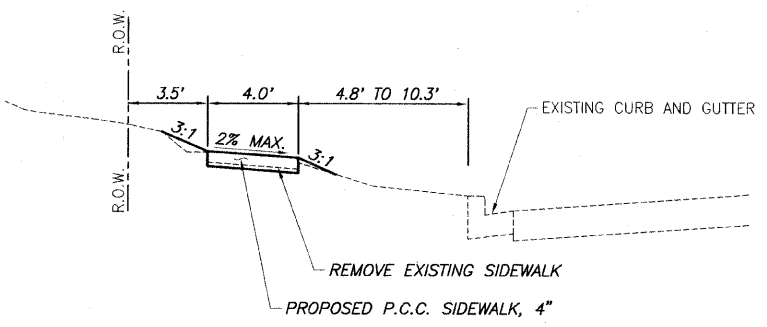
**TYPICAL SECTION - STA. 10+68.00 TO STA. 11+55.00 LT.**

Scale: 1"=4' (Horizontal)  
1"=2' (Vertical)



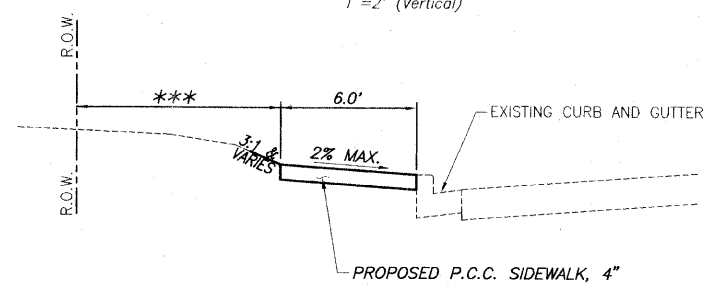
**TYPICAL SECTION - STA. 31+05.00 TO STA. 40+58.00 RT.**

Scale: 1"=4' (Horizontal)  
1"=2' (Vertical)



**TYPICAL SECTION - STA. 11+55.00 TO STA. 13+98.00 LT.**

Scale: 1"=4' (Horizontal)  
1"=2' (Vertical)

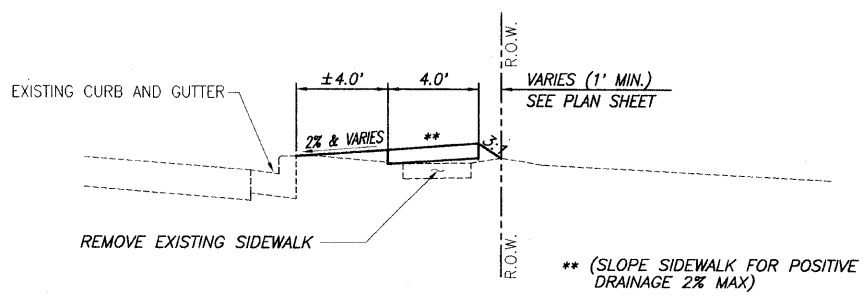


**TYPICAL SECTION - STA. 40+48.00 TO STA. 64+15.00 LT.**

**TYPICAL SECTION - STA. 68+50.00 TO STA. 78+90.00 LT.**

Scale: 1"=4' (Horizontal)  
1"=2' (Vertical)

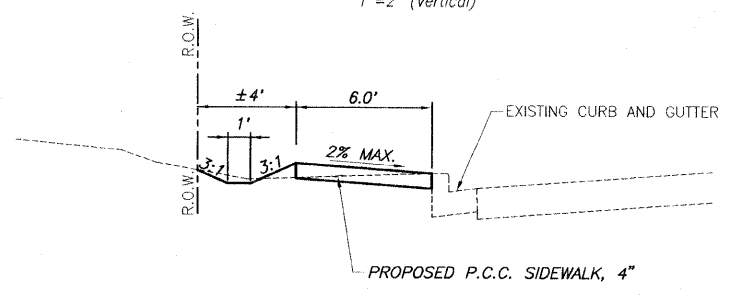
\*\*\* (±4' STA. 40+48 TO 69+72.6)  
(±9' STA. 69+72.6 TO 78+90)



**TYPICAL SECTION - STA. 21+00.00 TO STA. 23+35.00 RT.**

**TYPICAL SECTION - STA. 26+10.00 TO STA. 28+87.00 RT.**

Scale: 1"=4' (Horizontal)  
1"=2' (Vertical)



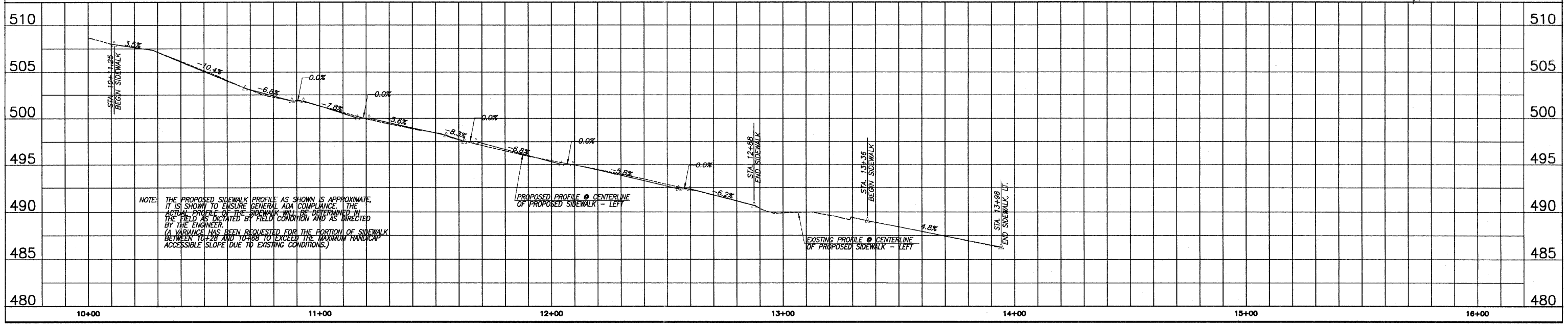
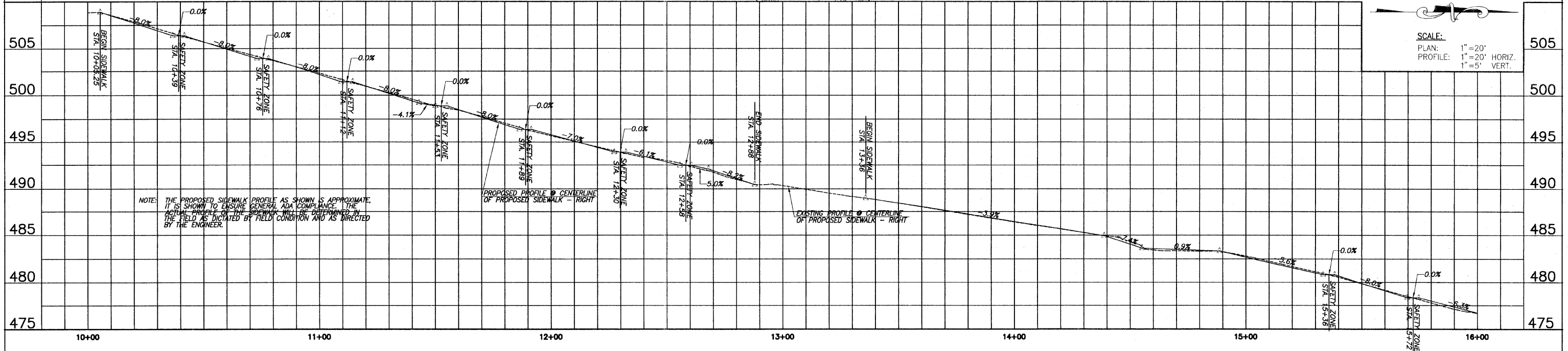
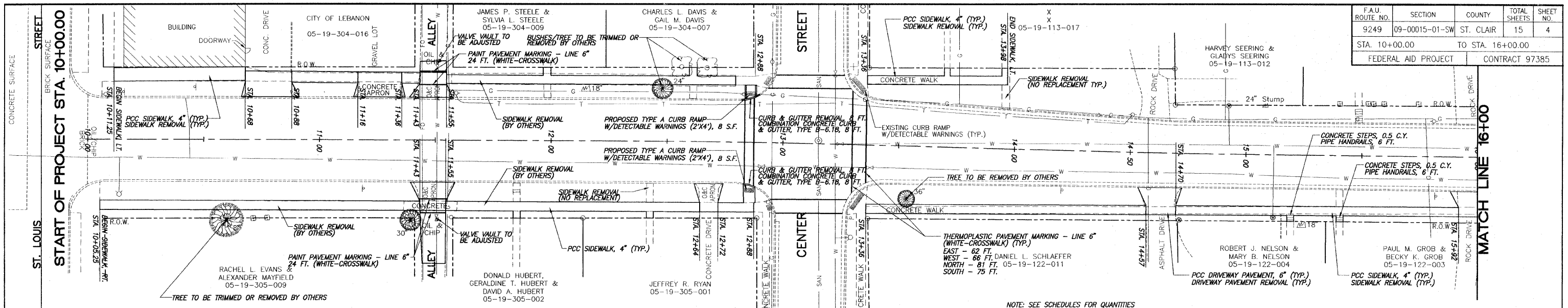
**TYPICAL SECTION - STA. 64+15.00 TO STA. 68+50.00 LT.**

Scale: 1"=4' (Horizontal)  
1"=2' (Vertical)

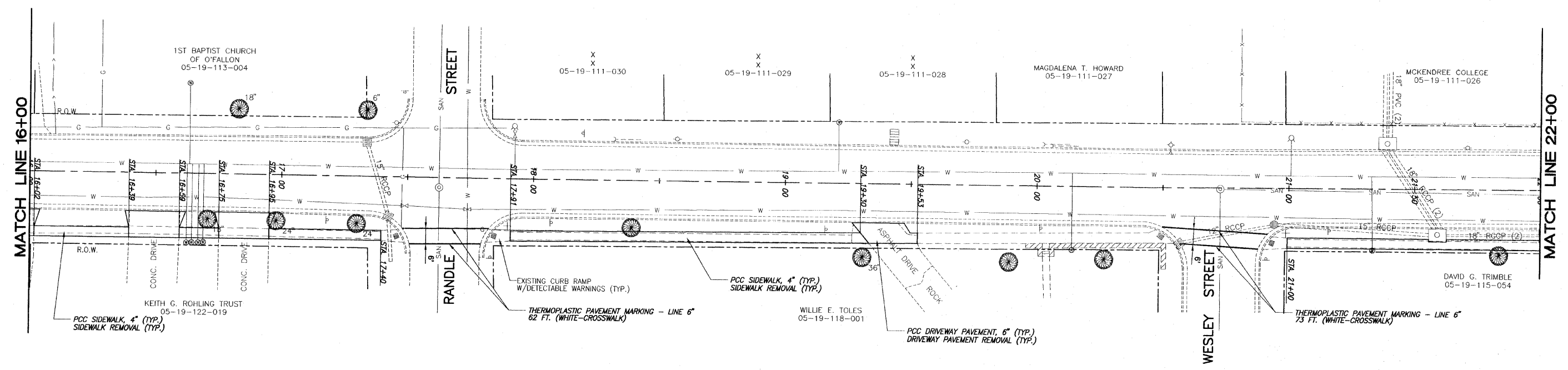
**SIDEWALK/DRIVEWAY SCHEDULE**

STATION	PCC SIDEWALK 4 INCH (SQ. FT.)	SIDEWALK REMOVAL (SQ. FT.)	PCC DRIVEWAY PAVEMENT 6" (SQ. YD.)	DRIVEWAY PAV'T REMOVAL (SQ. YD.)	INCIDENTAL HMA SURFACING (TON)	EXISTING DRIVEWAY PAV'T TYPE
10+05.25 TO 11+43, RT.	557					
10+11.25 TO 10+68, LT.	340	354				
10+68 TO 10+88, LT.			27.2	25.8		CONCRETE
10+88 TO 11+16, LT.	143	114				
11+16 TO 11+36, LT.			24.7	22.9		CONCRETE
11+36 TO 11+43, LT.	39	30				
11+43 TO 11+55, RT.			18.9	44.5	5.1	OIL & CHIP/CONCRETE
11+43 TO 11+55, LT.			16.7	22.8	1.1	OIL & CHIP
11+55 TO 12+64, RT.	458	66				
11+55 TO 12+88, LT.	520	54				
12+64 TO 12+72, RT.			12.8	11.7	0.2	OIL & CHIP/CONCRETE
12+72 TO 12+88, RT.	101					
13+36 TO 14+57, RT.	484	367				
13+36 TO 13+98, LT.	258	294				
14+57 TO 14+70, RT.			19.3	18.2	0.2	ASPHALT
14+70 TO 15+92, RT.	504	413				
15+92 TO 16+02, RT.			14.1	3.4		AGGREGATE/CONCRETE
16+02 TO 16+39, RT.	151	113				
16+39 TO 16+59, RT.			24.7	23.2		CONCRETE
16+59 TO 16+75, RT.	63	47				
16+75 TO 16+95, RT.			24.2	22.8		CONCRETE
16+95 TO 17+40, RT.	178	133				
17+91 TO 19+30, RT.	563	407				
19+30 TO 19+53, RT.			18.2	24.2	0.2	ASPHALT
21+00 TO 23+35, RT.	937	707				
23+35 TO 23+44, RT.			11.0	3.0		AGGREGATE/CONCRETE
23+44 TO 25+72, RT.	916	684				
26+10 TO 26+38 RT.	111	84				
26+38 TO 26+55, RT.		52	7.6			N/A
26+55 TO 28+87 RT.	940	710				
28+87 TO 29+06, RT.			14.4			AGGREGATE
29+06 TO 30+85, RT.	742	562				
40+48 TO 41+93, LT.	848					
42+37 TO 45+42, LT.	1,788					
45+84 TO 48+72, LT.	1,638					
49+20 TO 50+26, LT.	611					
50+37 TO 51+00, LT.	362					
51+19 TO 52+07, LT.	499					
52+55 TO 55+39, LT.	1,640					
55+79 TO 56+76, LT.	600					
56+90 TO 59+20, LT.	1,432					
59+57 TO 60+19, LT.	406					
60+30 TO 63+81, LT.	2,120					
64+15 TO 72+69, LT.	5,131					
72+82 TO 74+96, LT.	1,270					
75+10 TO 78+35, LT.	1,939					
78+47 TO 78+90, LT.	391					
TOTAL	28,680	5,191	233.8	222.5	6.8	

FAU ROUTE NO.	SECTION	COUNTY	TOTAL SHEETS	SHEET NO.
9249	09-00015-01-SW	ST. CLAIR	15	4
STA. 10+00.00		TO STA. 16+00.00		
FEDERAL AID PROJECT			CONTRACT 97385	

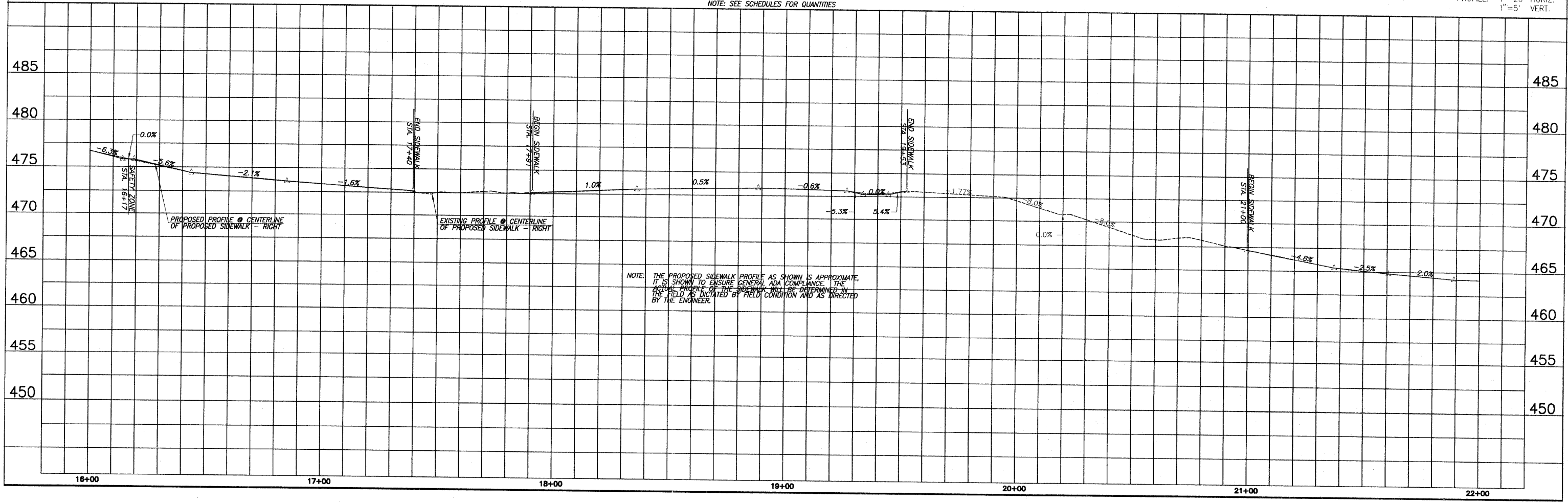


F.A.U. ROUTE NO.	SECTION	COUNTY	TOTAL SHEETS	SHEET NO.
9249	09-0015-01-SW	ST. CLAIR	15	5
STA. 16+00.00		TO STA. 22+00.00		
FEDERAL AID PROJECT		CONTRACT 97385		



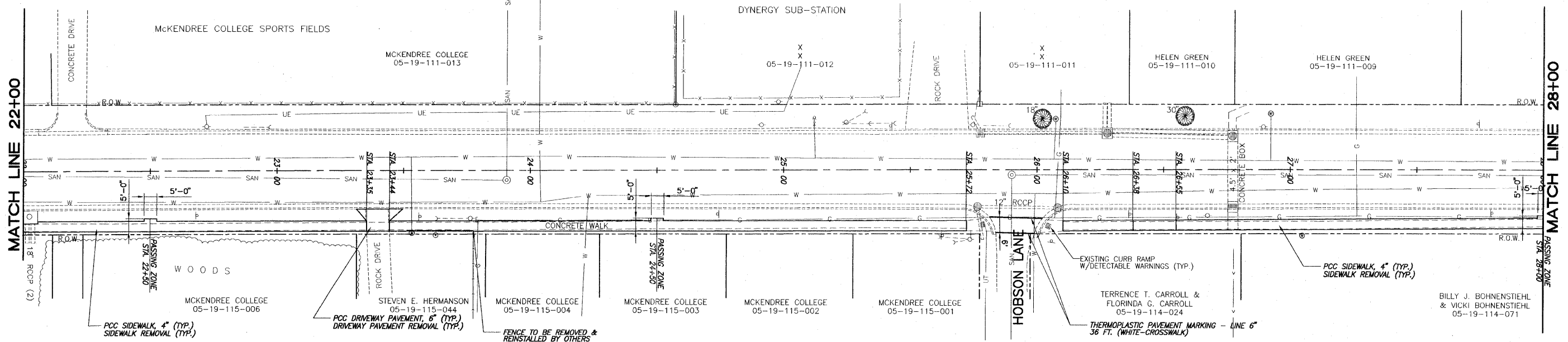
NOTE: SEE SCHEDULES FOR QUANTITIES

SCALE:  
 PLAN: 1"=20'  
 PROFILE: 1"=20' HORIZ.  
 1"=5' VERT.



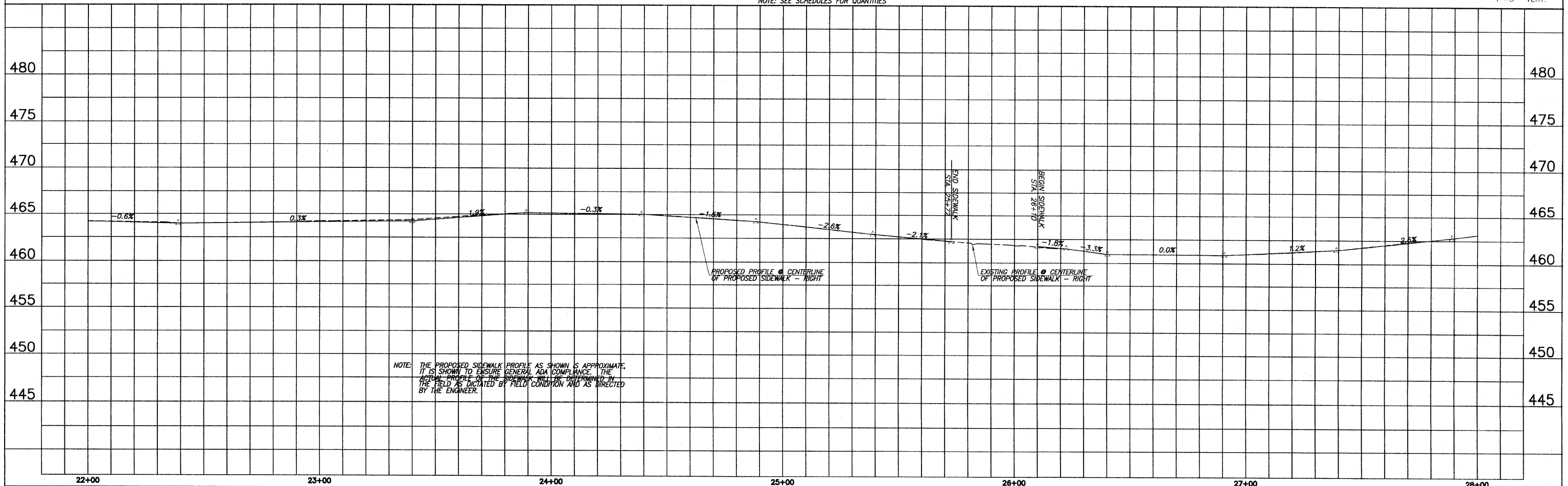


F.A.U. ROUTE NO.	SECTION	COUNTY	TOTAL SHEETS	SHEET NO.
9249	09-00015-01-SW	ST. CLAIR	15	6
STA. 22+00.00		TO STA. 28+00.00		
FEDERAL AID PROJECT		CONTRACT 97385		



SCALE:  
 PLAN: 1"=20'  
 PROFILE: 1"=20' HORIZ.  
 1"=5' VERT.

NOTE: SEE SCHEDULES FOR QUANTITIES



F.A.U. ROUTE NO.	SECTION	COUNTY	TOTAL SHEETS	SHEET NO.
9249	09-00015-01-SW	ST. CLAIR	15	7
STA. 28+00.00		TO STA. 34+00.00		
FEDERAL AID PROJECT			CONTRACT 97385	

WILLIAM L. FORD  
& JULIE E. FORD  
05-19-100-040

MICHAEL J. MIGHT &  
PORSCHÉ K. MIGHT  
05-19-100-044

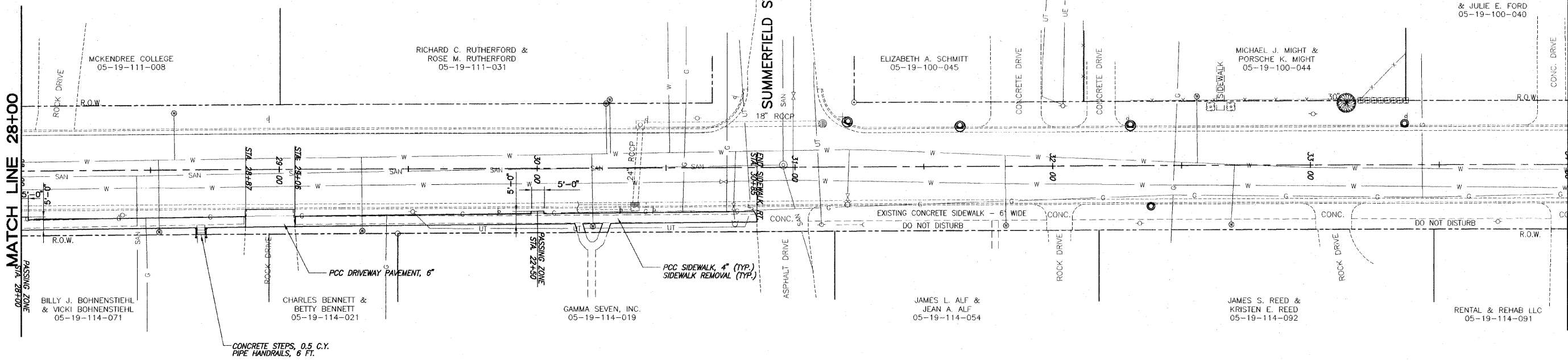
ELIZABETH A. SCHMITT  
05-19-100-045

RICHARD C. RUTHERFORD &  
ROSE M. RUTHERFORD  
05-19-111-031

MCKENDREE COLLEGE  
05-19-111-008

MATCH LINE 28+00

MATCH LINE 34+00



CONCRETE STEPS, 0.5 C.Y.  
PIPE HANDRAILS, 6 FT.

PCC SIDEWALK, 4" (TYP.)  
SIDEWALK REMOVAL (TYP.)

EXISTING CONCRETE SIDEWALK - 6' WIDE

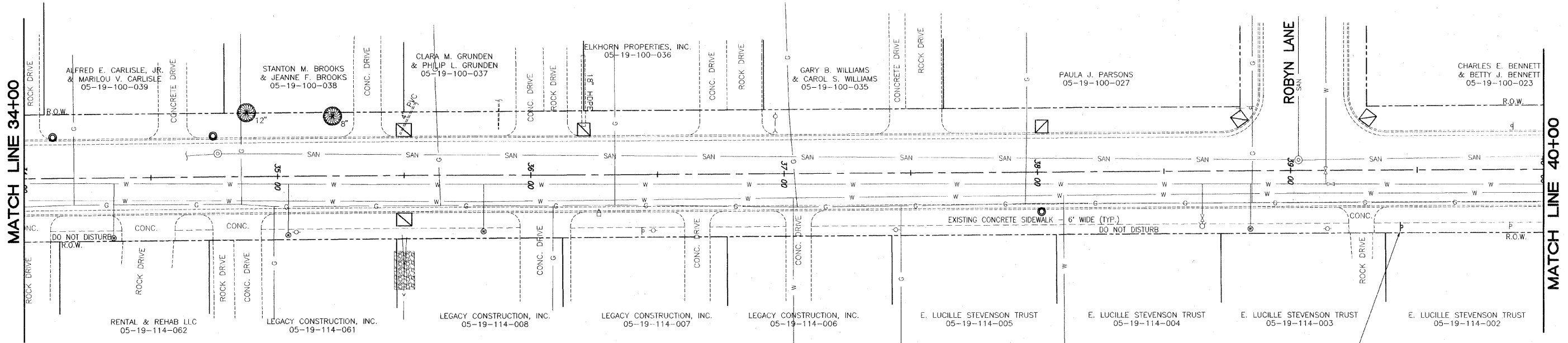
NOTE: SEE SCHEDULES FOR QUANTITIES

SCALE:  
PLAN: 1"=20'  
PROFILE: 1"=20' HORIZ.  
1"=5' VERT.



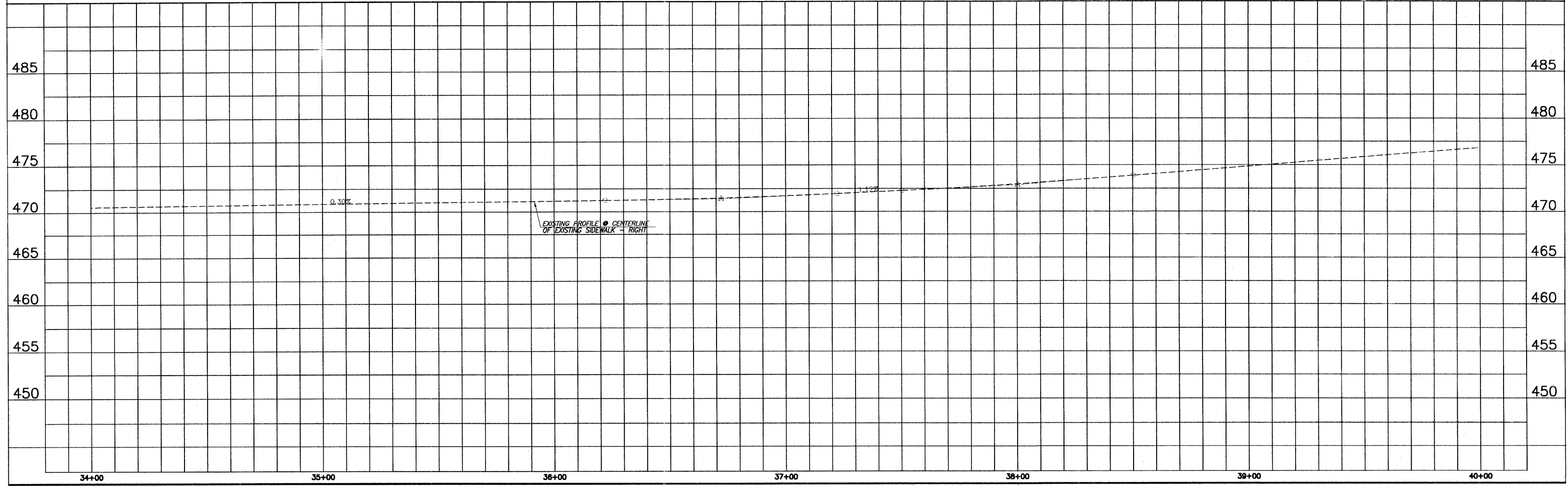
NOTE: THE PROPOSED SIDEWALK PROFILE AS SHOWN IS APPROXIMATE. IT IS SHOWN TO ENSURE GENERAL ADA COMPLIANCE. THE ACTUAL PROFILE OF THE SIDEWALK WILL BE DETERMINED IN THE FIELD AS DICTATED BY FIELD CONDITION AND AS DIRECTED BY THE ENGINEER.

F.A.U. ROUTE NO.	SECTION	COUNTY	TOTAL SHEETS	SHEET NO.
9249	09-00015-01-SW	ST. CLAIR	15	8
STA. 34+00.00		TO STA. 40+00.00		
FEDERAL AID PROJECT		CONTRACT 97385		



STA. 39+45, 22.5' RT.  
 30" CROSSWALK WARNING SIGN W11-2  
 WITH SUPPLEMENTAL PLAQUE W-16-9p (AHEAD)  
 SIGN PANEL - TYPE 1, 8.25' SF.  
 METAL POST - TYPE A, 12 FT.

SCALE:  
 PLAN: 1"=20'  
 PROFILE: 1"=20' HORIZ.  
 1"=5' VERT.





F.A.U. ROUTE NO.	SECTION	COUNTY	TOTAL SHEETS	SHEET NO.
9249	09-00015-01-SW	ST. CLAIR	15	9
STA. 40+00.00		TO STA. 46+00.00		
FEDERAL AID PROJECT		CONTRACT 97385		

STA. 40+57, 22.5' LT.  
30" CROSSWALK WARNING SIGN W11-2  
WITH SUPPLEMENTAL PLAQUE W-16-7p (ARROW)  
SIGN PANEL - TYPE 1, 8.25 S.F.  
METAL POST - TYPE A, 12 FT.

COMBINATION CURB AND GUTTER REMOVAL, 14 FT.  
COMBINATION CONCRETE CURB & GUTTER, TYPE B-6.18, 14 FT.

PROPOSED TYPE B CURB RAMP  
W/DETECTABLE WARNINGS (2'x8'), 12 S.F.

RONALD R. HALL JR.  
& JOY L. HALL  
05-18-306-011

PCC SIDEWALK, 4" (TYP.)

PROPOSED TYPE B CURB RAMP  
W/DETECTABLE WARNINGS (2'x4'), 8 S.F.

CLOVER DRIVE

PROPOSED TYPE B CURB RAMP  
W/DETECTABLE WARNINGS (2'x4'), 8 S.F.

JOYCE L. FURTKAMP  
& JAMES F. FURTKAMP  
05-18-304-014

PCC SIDEWALK, 4" (TYP.)

PROPOSED TYPE B CURB RAMP  
W/DETECTABLE WARNINGS (2'x4'), 8 S.F.

LARRY D. SMITH &  
LISA K. SMITH  
05-18-304-007

HILLCREST DRIVE

MATCH LINE 40+00

MATCH LINE 46+00

STA. 40+40, 22.5' RT.  
30" CROSSWALK WARNING SIGN W11-2  
WITH SUPPLEMENTAL PLAQUE W-16-7p (ARROW)  
SIGN PANEL - TYPE 1, 8.25 S.F.  
METAL POST - TYPE A, 12 FT.

EXISTING CURB RAMP  
W/DETECTABLE WARNINGS (TYP.)

PEARL STREET

THERMOPLASTIC PAVEMENT MARKING - LINE 6"  
56 FT. (WHITE-CROSSWALK)

R.O.W. THERMOPLASTIC PAVEMENT MARKING - LINE 24"  
30 FT. (WHITE-CROSSWALK) (TYP.)

THERMOPLASTIC PAVEMENT MARKING - LINE 6"  
92 FT. (WHITE-CROSSWALK)

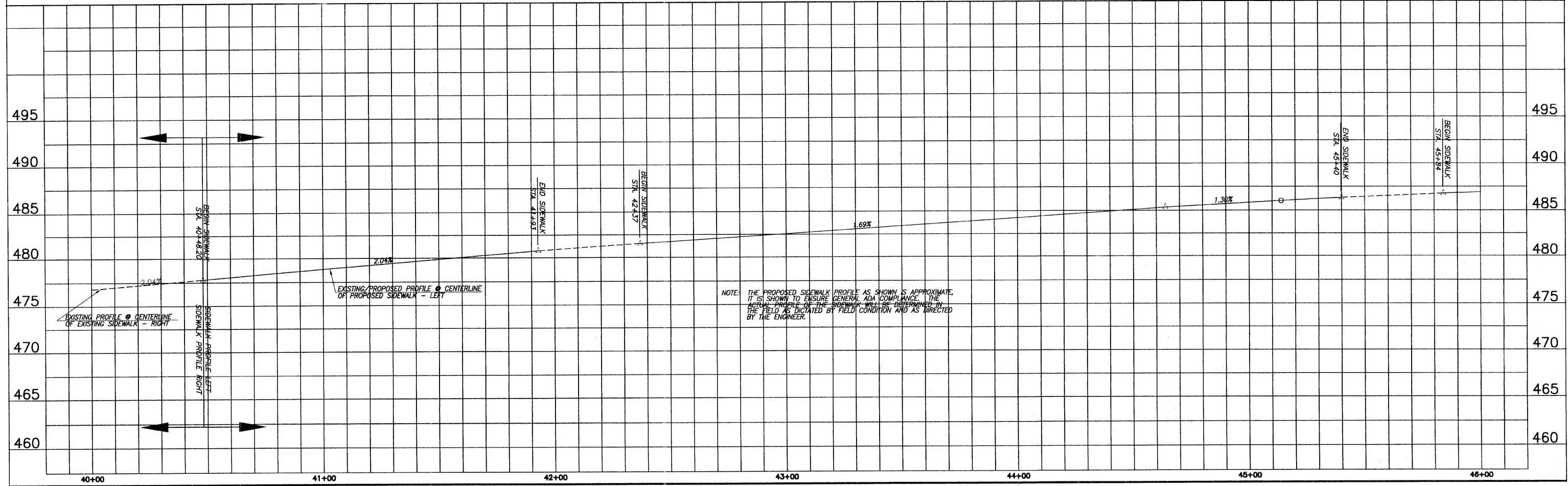
STA. 41+77, 22.5' LT.  
30" CROSSWALK WARNING SIGN W11-2  
WITH SUPPLEMENTAL PLAQUE W-16-9p (AHEAD)  
SIGN PANEL - TYPE 1, 8.25 S.F.  
METAL POST - TYPE A, 12 FT.

EXISTING SIGN TO BE REMOVED  
AND REINSTALLED (TYP.)  
INCLUDED IN COST OF PCC SIDEWALK

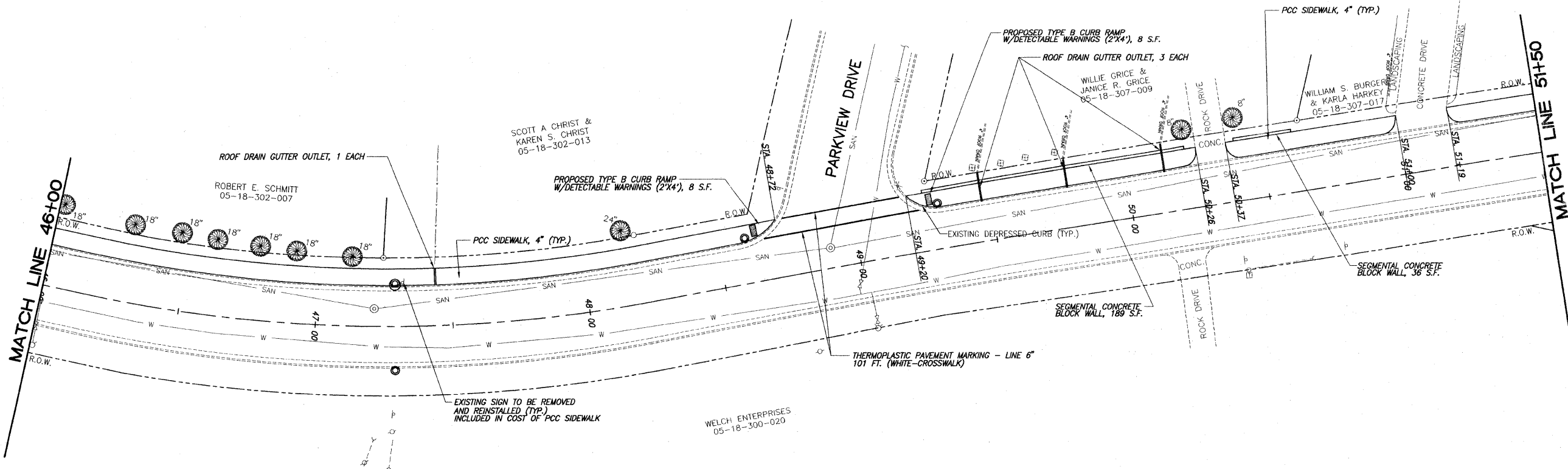
WELCH ENTERPRISES LP  
05-18-300-020

NOTE: SEE SCHEDULES FOR QUANTITIES

SCALE:  
PLAN: 1" = 20'  
PROFILE: 1" = 20' HORIZ.  
1" = 5' VERT.

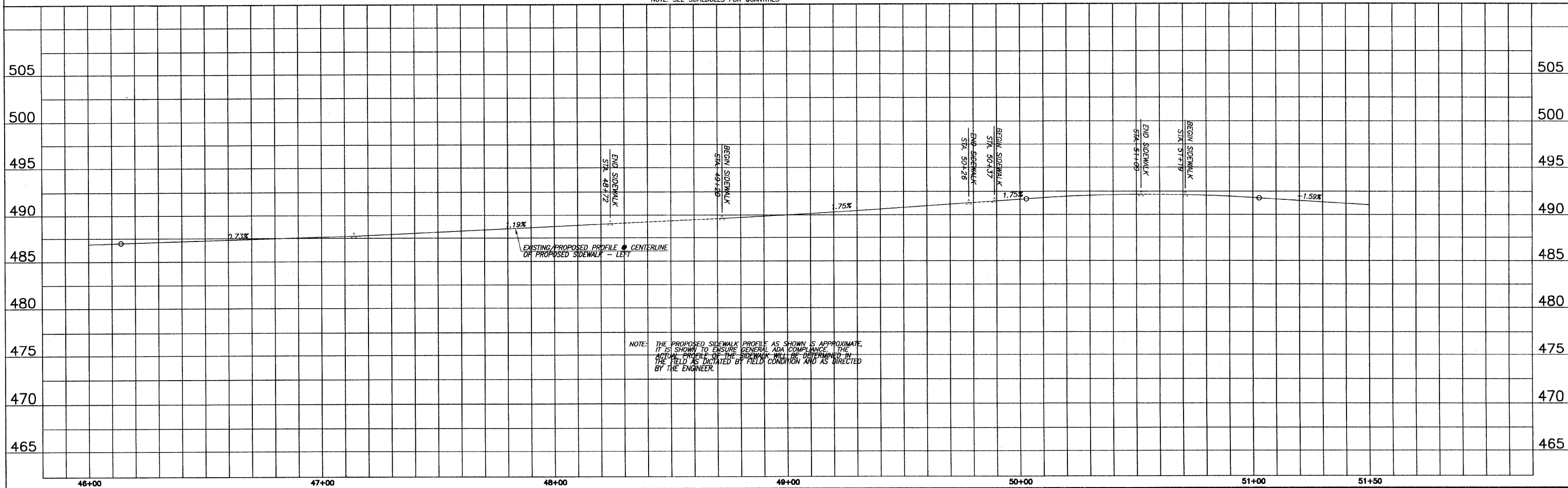


F.A.U. ROUTE NO.	SECTION	COUNTY	TOTAL SHEETS	SHEET NO.
9249	09-00015-01-SW	ST. CLAIR	15	10
STA. 46+00.00		TO STA. 51+50.00		
FEDERAL AID PROJECT		CONTRACT 97385		

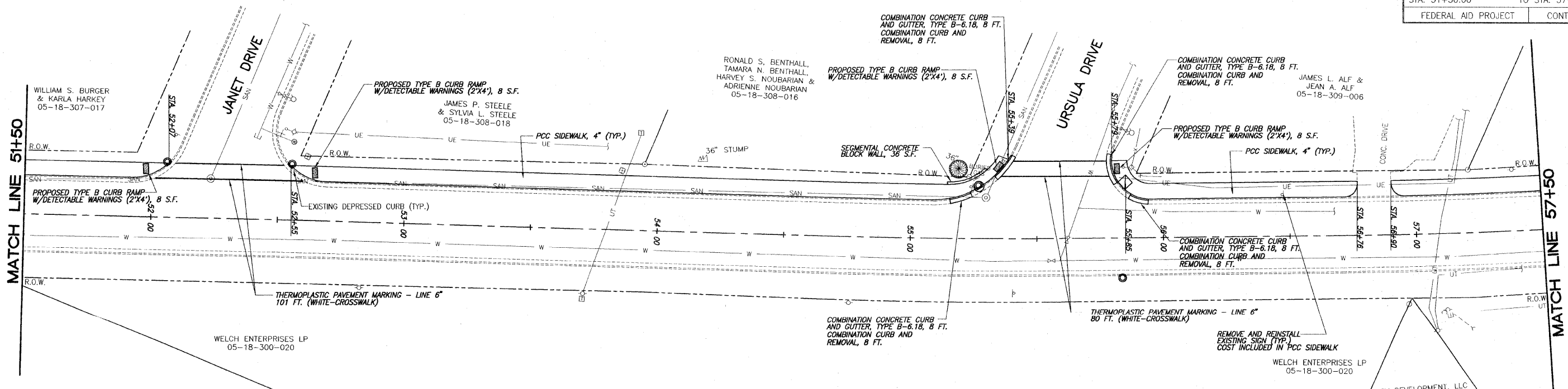


NOTE: SEE SCHEDULES FOR QUANTITIES

SCALE:  
 PLAN: 1"=20'  
 PROFILE: 1"=20' HORIZ.  
 1"=5' VERT.



F.A.U. ROUTE NO.	SECTION	COUNTY	TOTAL SHEETS	SHEET NO.
9249	09-00015-01-SW	ST. CLAIR	15	11
STA. 51+50.00		TO STA. 57+50.00		
FEDERAL AID PROJECT		CONTRACT 97385		



WILLIAM S. BURGER & KARLA HARKEY  
05-18-307-017

JAMES P. STEELE & SYLVIA L. STEELE  
05-18-308-018

RONALD S. BENTHALL, TAMARA N. BENTHALL, HARVEY S. NOUBARIAN & ADRIENNE NOUBARIAN  
05-18-308-016

JAMES L. ALF & JEAN A. ALF  
05-18-309-006

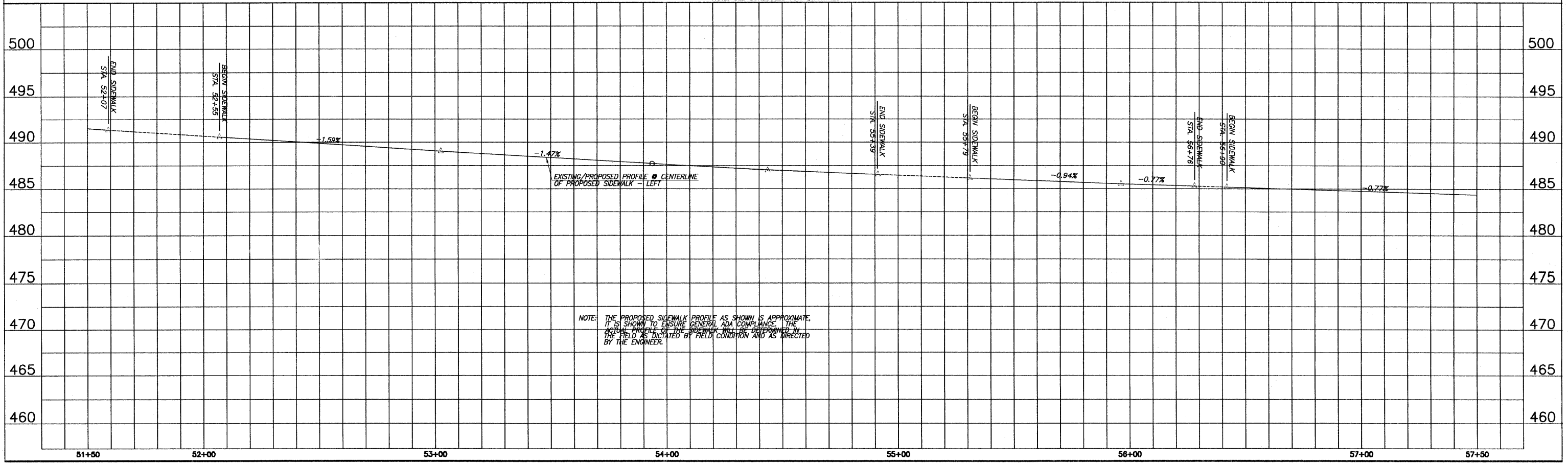
WELCH ENTERPRISES LP  
05-18-300-020

WELCH ENTERPRISES LP  
05-18-300-020

CCV DEVELOPMENT, LLC  
05-18-314-024

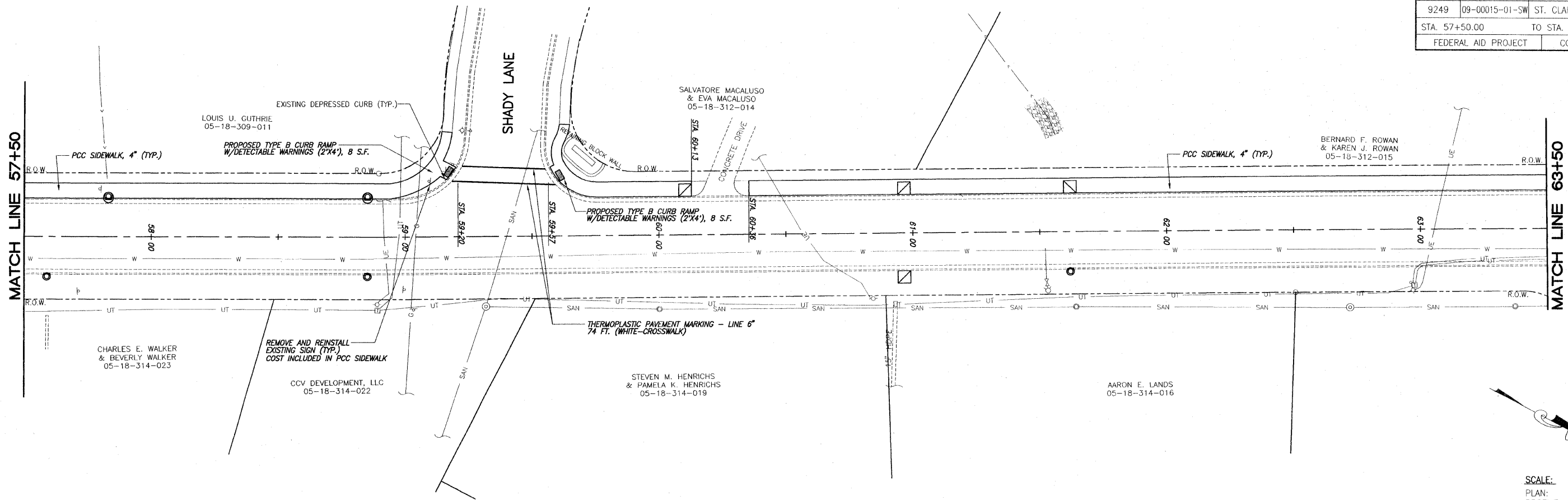
SCALE:  
PLAN: 1"=20'  
PROFILE: 1"=20' HORIZ.  
1"=5' VERT.

NOTE: SEE SCHEDULES FOR QUANTITIES



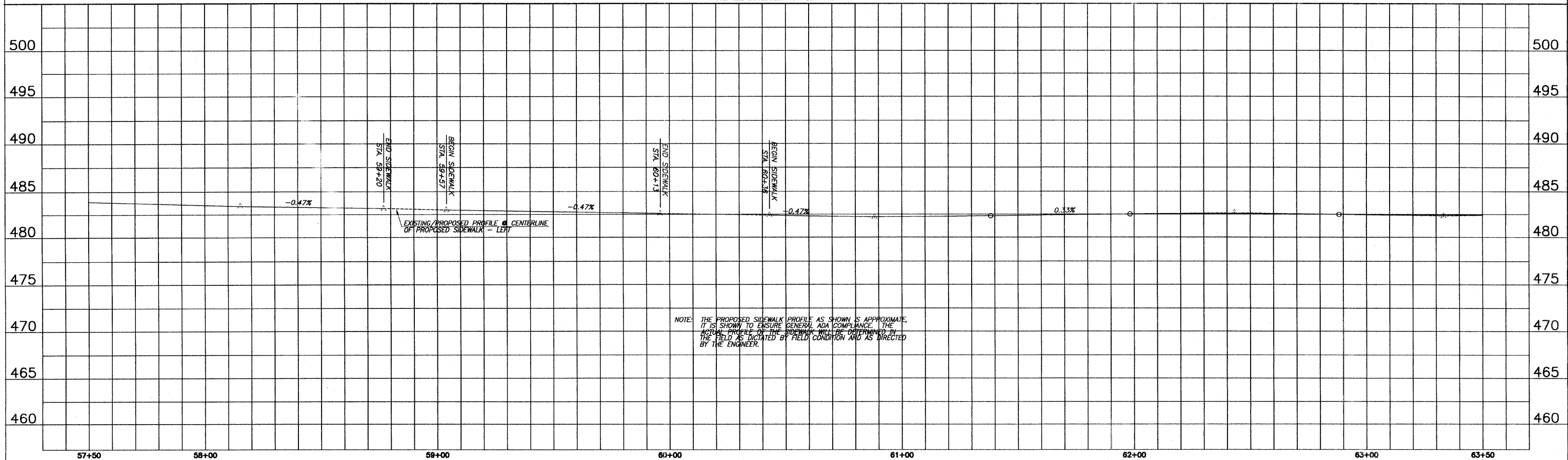
NOTE: THE PROPOSED SIDEWALK PROFILE AS SHOWN IS APPROXIMATE. IT IS SHOWN TO ENSURE GENERAL ADA COMPLIANCE. THE ACTUAL PROFILE OF THE SIDEWALK WILL BE DETERMINED IN THE FIELD AS DICTATED BY FIELD CONDITION AND AS DIRECTED BY THE ENGINEER.

F.A.U. ROUTE NO.	SECTION	COUNTY	TOTAL SHEETS	SHEET NO.
9249	09-00015-01-SW	ST. CLAIR	15	12
STA. 57+50.00		TO STA. 63+50.00		
FEDERAL AID PROJECT			CONTRACT 97385	



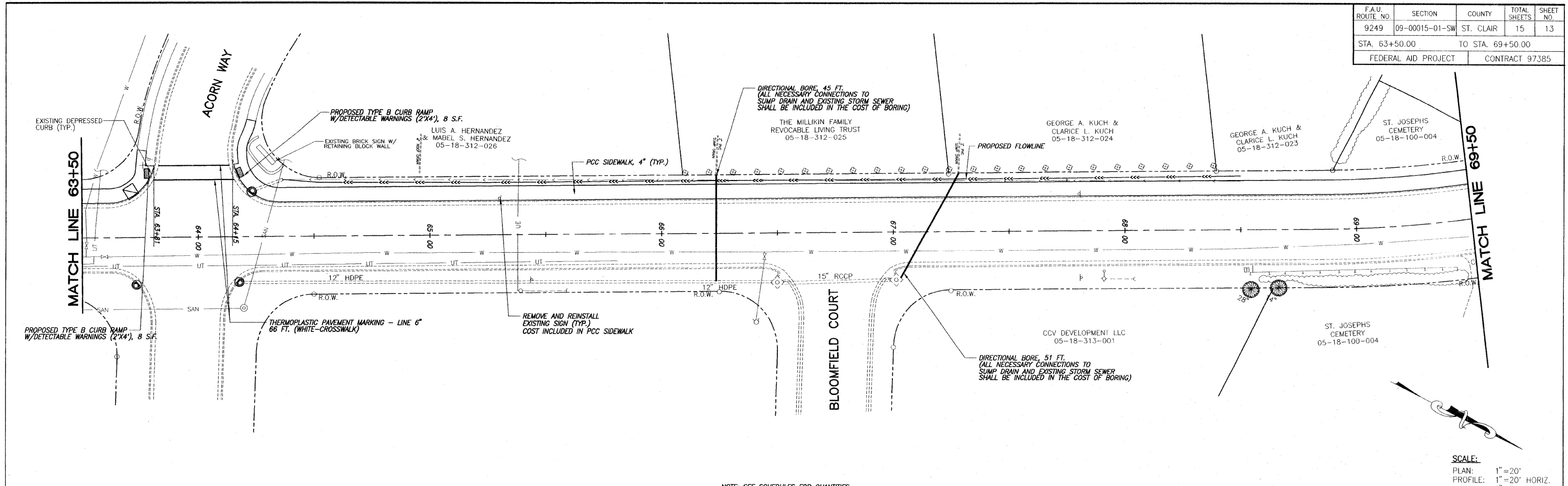
SCALE:  
 PLAN: 1" = 20'  
 PROFILE: 1" = 20' HORIZ.  
 1" = 5' VERT.

NOTE: SEE SCHEDULES FOR QUANTITIES

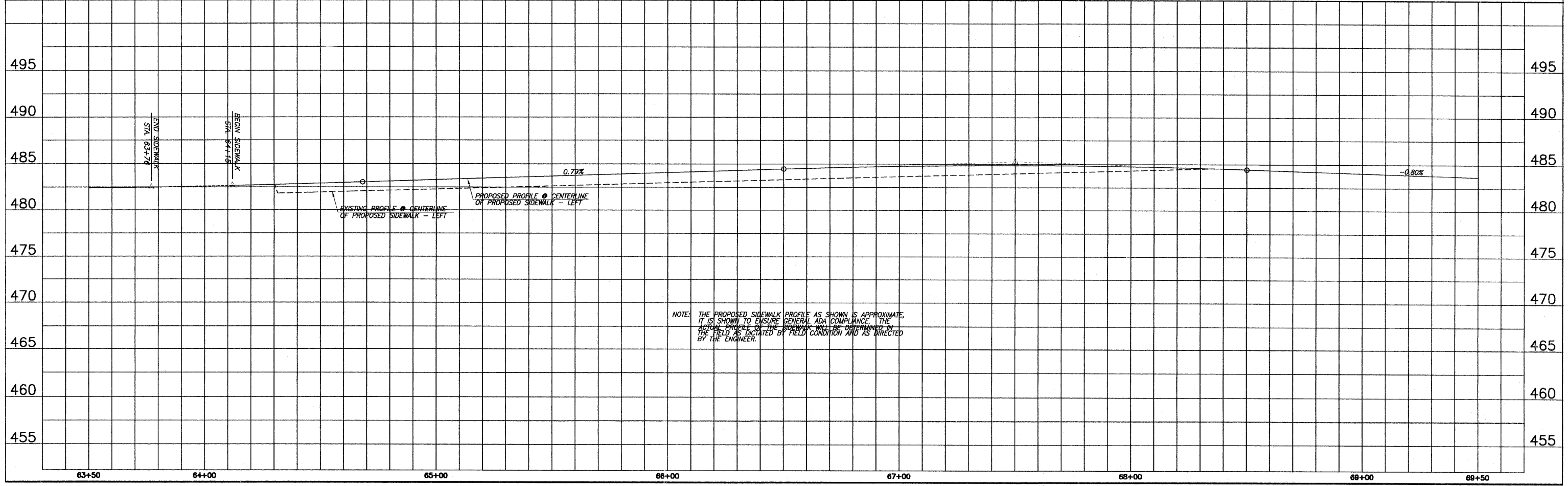


NOTE: THE PROPOSED SIDEWALK PROFILE AS SHOWN IS APPROXIMATE. IT IS SHOWN TO ENSURE GENERAL ADA COMPLIANCE. THE ACTUAL PROFILE OF THE SIDEWALK WILL BE DETERMINED IN THE FIELD AS DICTATED BY FIELD CONDITION AND AS DIRECTED BY THE ENGINEER.

F.A.U. ROUTE NO.	SECTION	COUNTY	TOTAL SHEETS	SHEET NO.
9249	09-00015-01-SW	ST. CLAIR	15	13
STA. 63+50.00		TO STA. 69+50.00		
FEDERAL AID PROJECT			CONTRACT 97385	



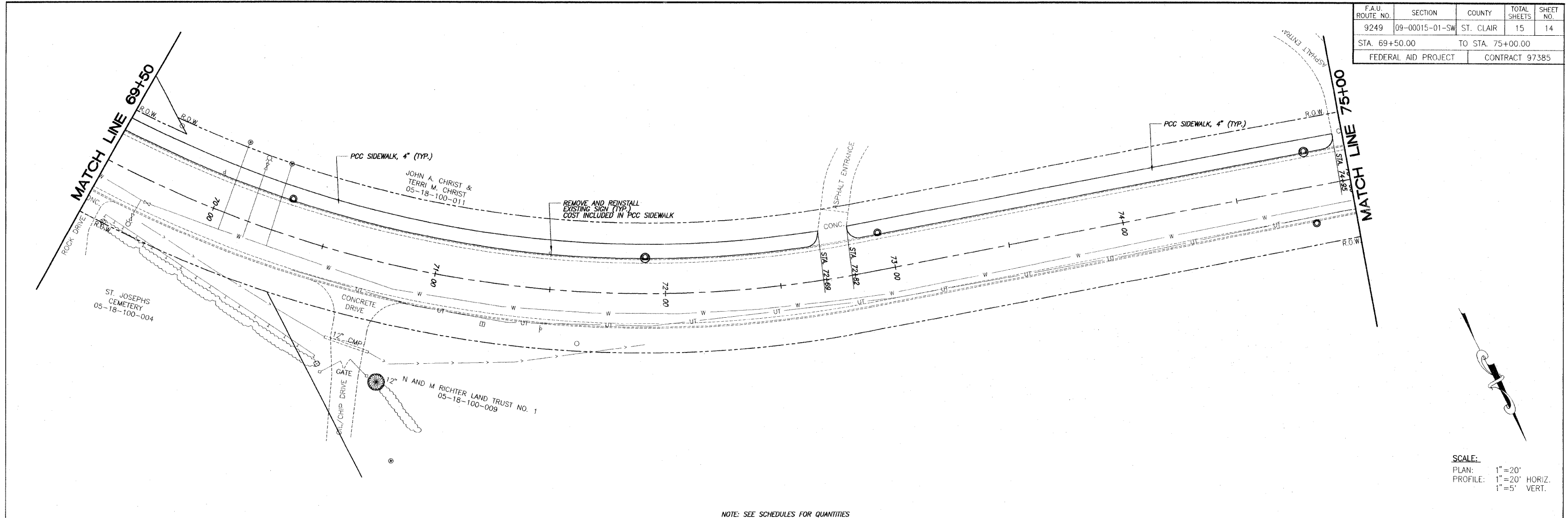
NOTE: SEE SCHEDULES FOR QUANTITIES



E:\1039 - Lebanon - Monroe Street Sidewalk\1039FP\_10.dwg, 3/22/2019 2:24:36 PM, Plotted by A.A.S.

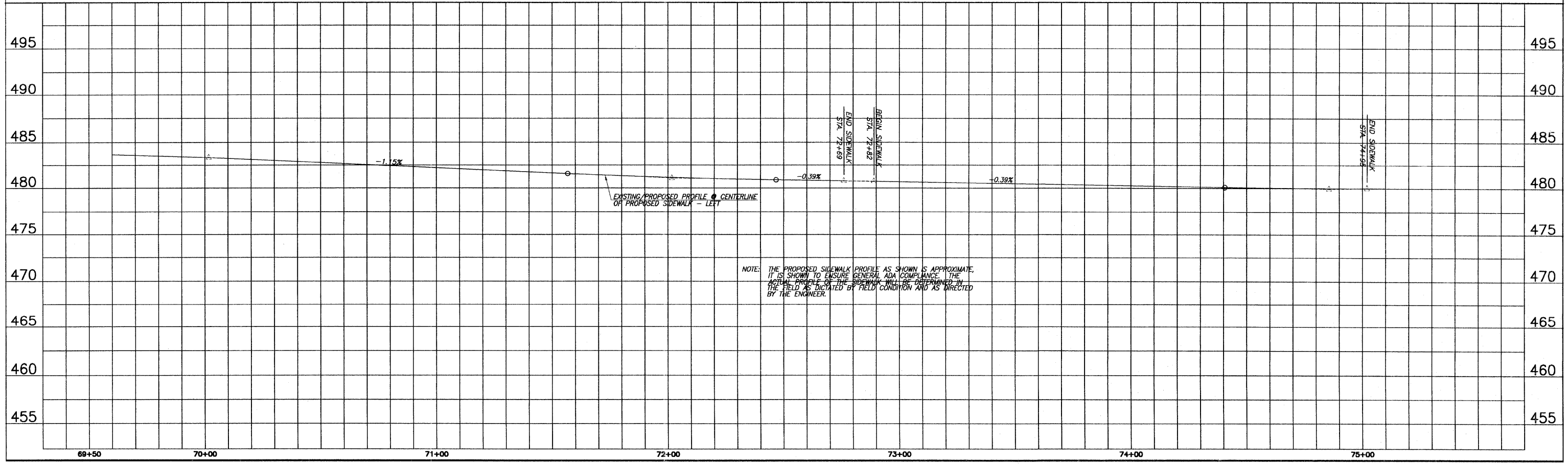


F.A.U. ROUTE NO.	SECTION	COUNTY	TOTAL SHEETS	SHEET NO.
9249	09-00015-01-SW	ST. CLAIR	15	14
STA. 69+50.00		TO STA. 75+00.00		
FEDERAL AID PROJECT			CONTRACT 97385	



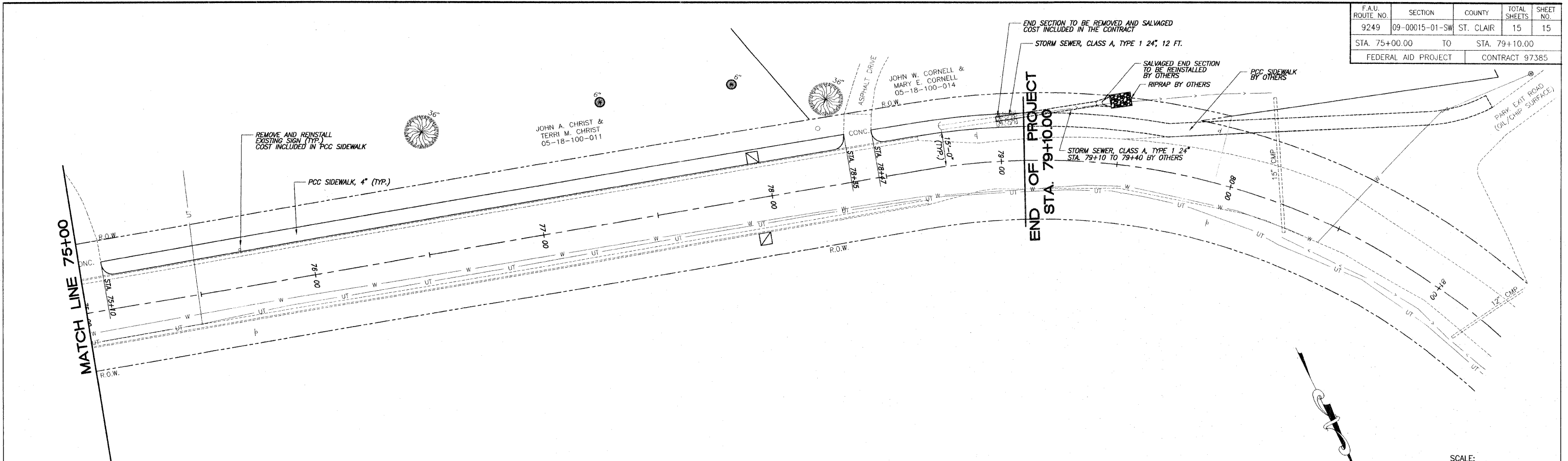
SCALE:  
 PLAN: 1" = 20'  
 PROFILE: 1" = 20' HORIZ.  
 1" = 5' VERT.

NOTE: SEE SCHEDULES FOR QUANTITIES



NOTE: THE PROPOSED SIDEWALK PROFILE AS SHOWN IS APPROXIMATE. IT IS SHOWN TO ENSURE GENERAL ADA COMPLIANCE. THE ACTUAL PROFILE OF THE SIDEWALK WILL BE DETERMINED BY THE FIELD AS DICTATED BY FIELD CONDITION AND AS DIRECTED BY THE ENGINEER.

F.A.U. ROUTE NO.	SECTION	COUNTY	TOTAL SHEETS	SHEET NO.
9249	09-00015-01-SW	ST. CLAIR	15	15
STA. 75+00.00 TO STA. 79+10.00		FEDERAL AID PROJECT CONTRACT 97385		



NOTE: SEE SCHEDULES FOR QUANTITIES

SCALE:  
 PLAN: 1" = 20'  
 PROFILE: 1" = 20' HORIZ.  
 1" = 5' VERT.

