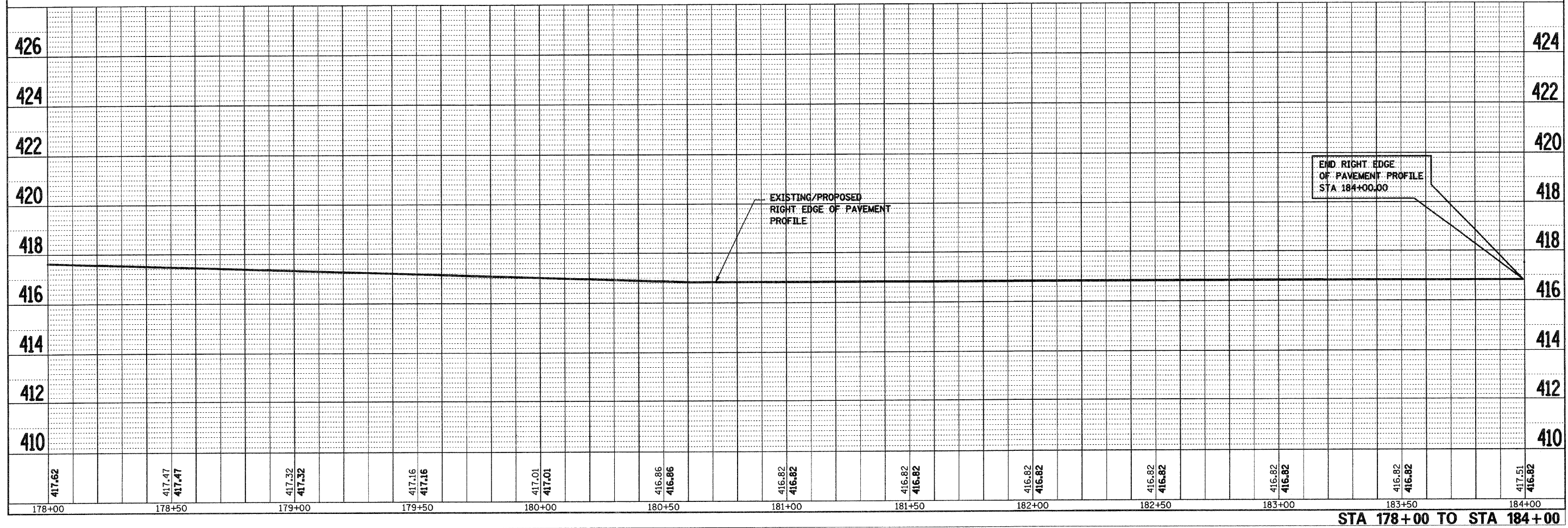
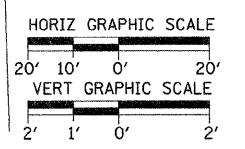
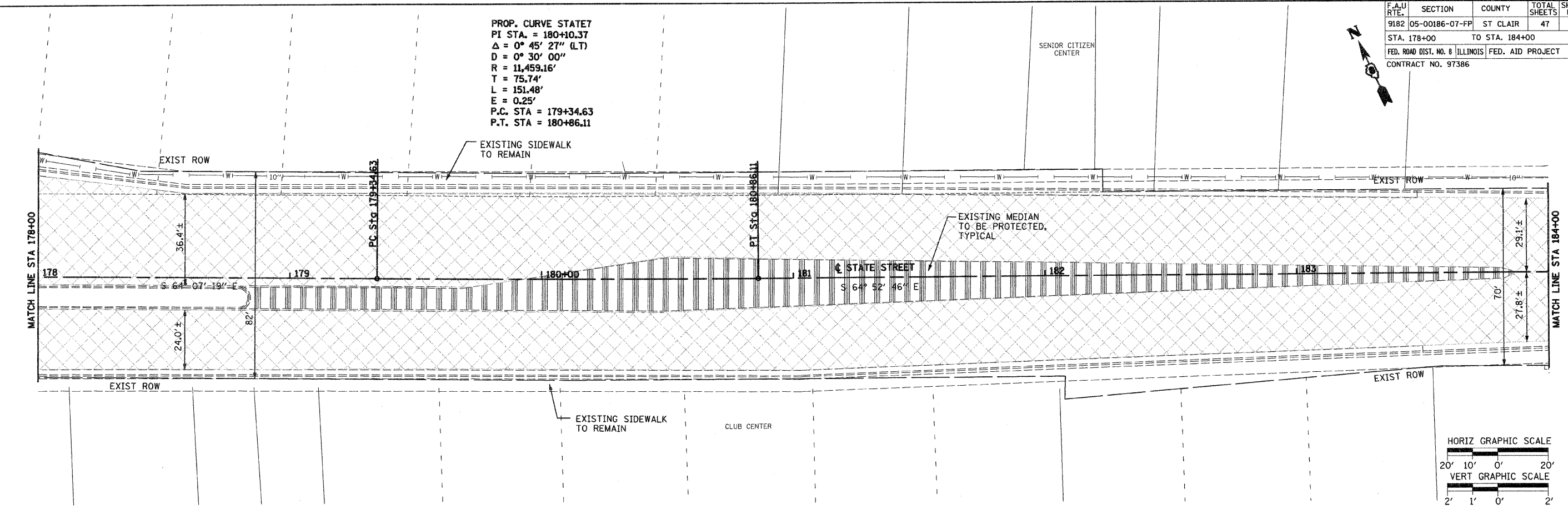


F.A.U. RTE.	SECTION	COUNTY	TOTAL SHEETS	SHEET NO.
9182	05-00186-07-FP	ST CLAIR	47	20
STA. 178+00		TO STA. 184+00		
FED. ROAD DIST. NO. 8		ILLINOIS	FED. AID PROJECT	
CONTRACT NO. 97386				

PROP. CURVE STATE7  
 PI STA. = 180+10.37  
 $\Delta = 0^\circ 45' 27''$  (L.T)  
 $D = 0^\circ 30' 00''$   
 $R = 11,459.16'$   
 $T = 75.74'$   
 $L = 151.48'$   
 $E = 0.25'$   
 P.C. STA = 179+34.63  
 P.T. STA = 180+86.11



STA 178+00 TO STA 184+00