

F.A.U. RTE.	SECTION	COUNTY	TOTAL SHEETS	SHEET NO.
9182	05-00186-07-FP	ST CLAIR	47	27

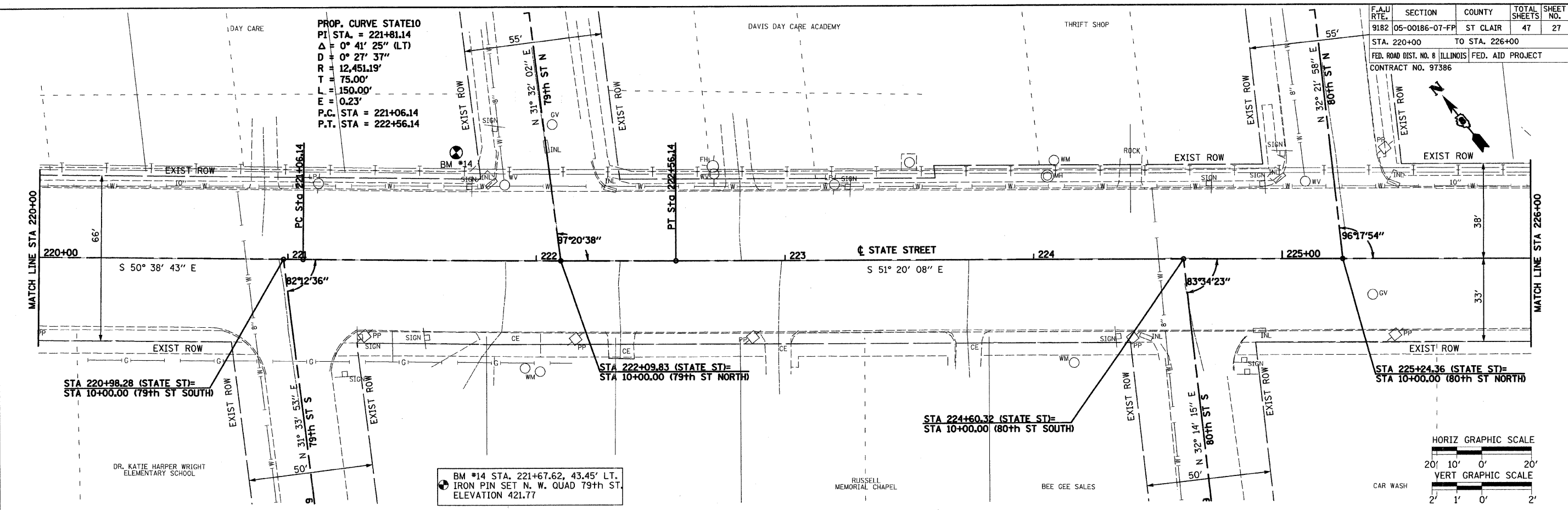
STA. 220+00 TO STA. 226+00

FED. ROAD DIST. NO. 8 ILLINOIS FED. AID PROJECT

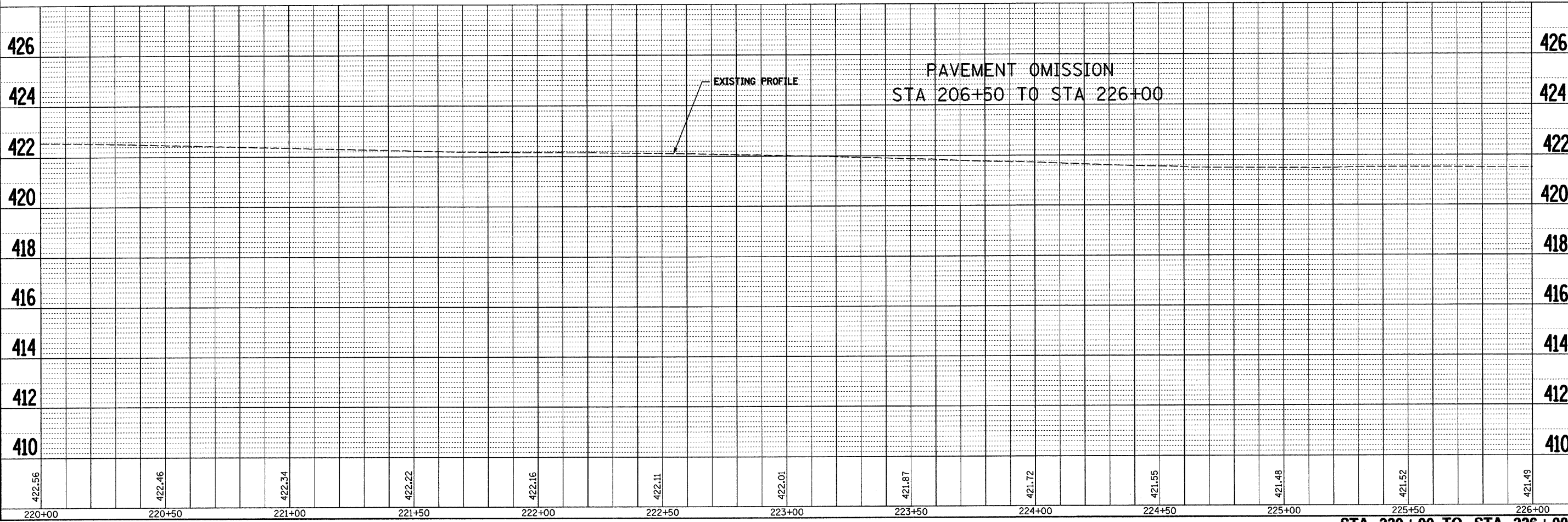
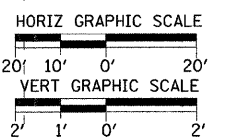
CONTRACT NO. 97386



PROP. CURVE STATE10
 P.I. STA. = 221+81.14
 $\Delta = 0^\circ 41' 25''$ (L.T.)
 $D = 0^\circ 27' 37''$
 $R = 12,451.19'$
 $T = 75.00'$
 $L = 150.00'$
 $E = 0.23'$
 P.C. STA = 221+06.14
 P.T. STA = 222+56.14



BM #14 STA. 221+67.62, 43.45' LT.
 IRON PIN SET N. W. QUAD 79th ST.
 ELEVATION 421.77



STA 220+00 TO STA 226+00