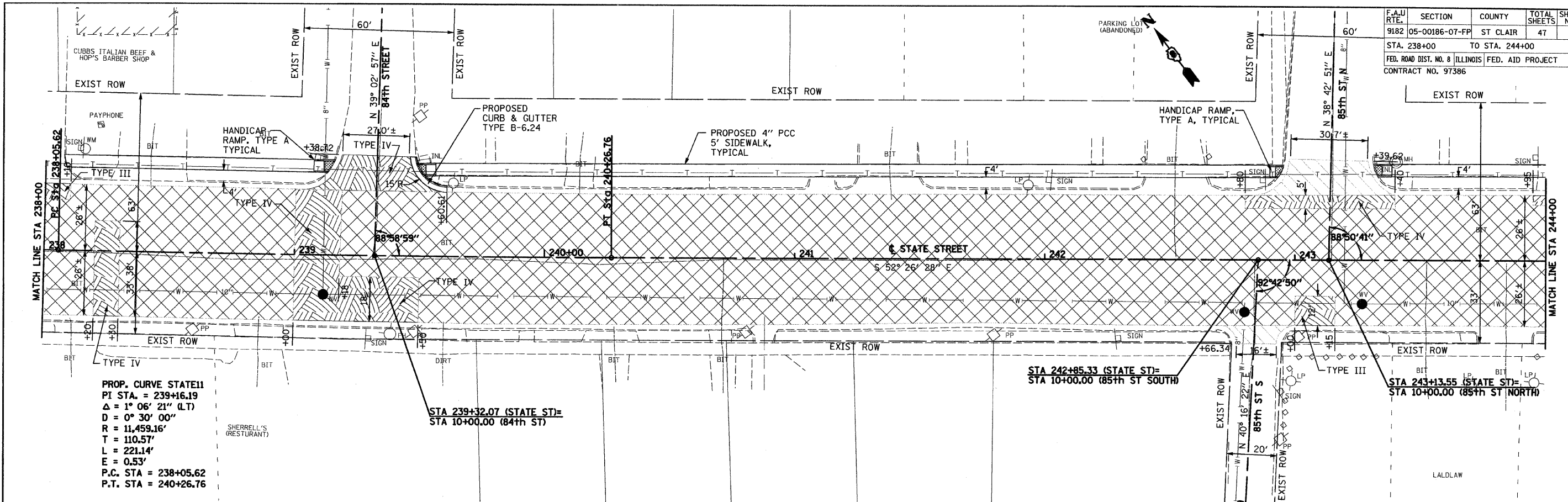


F.A.U. RTE.	SECTION	COUNTY	TOTAL SHEETS	SHEET NO.
9182	05-00186-07-FP	ST CLAIR	47	30
STA. 238+00		TO STA. 244+00		
FED. ROAD DIST. NO. 8 ILLINOIS FED. AID PROJECT				
CONTRACT NO. 97386				

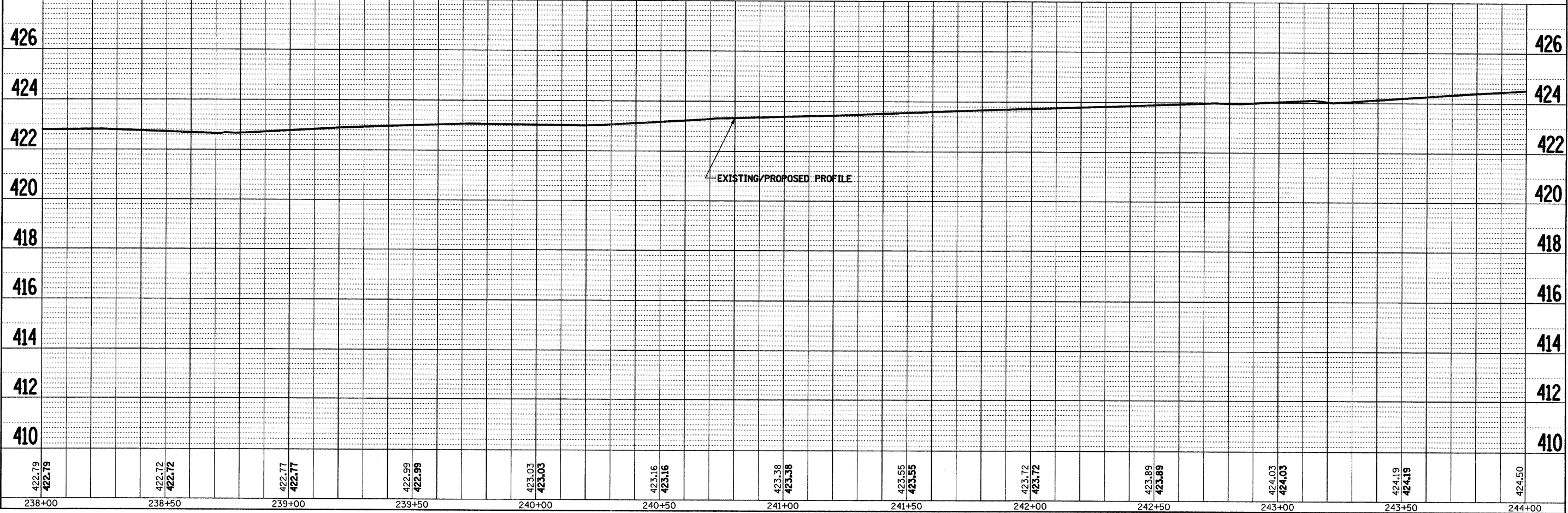


PROP. CURVE STATE11
 PI STA. = 239+16.19
 $\Delta = 1^\circ 06' 21''$ (LT)
 $D = 0^\circ 30' 00''$
 $R = 11,459.16'$
 $T = 110.57'$
 $L = 221.14'$
 $E = 0.53'$
 P.C. STA = 238+05.62
 P.T. STA = 240+26.76

STA 239+32.07 (STATE ST)=
 STA 10+00.00 (84th ST)

STA 242+85.33 (STATE ST)=
 STA 10+00.00 (85th ST SOUTH)

STA 243+13.55 (STATE ST)=
 STA 10+00.00 (85th ST NORTH)



STA 238+00 TO STA 244+00