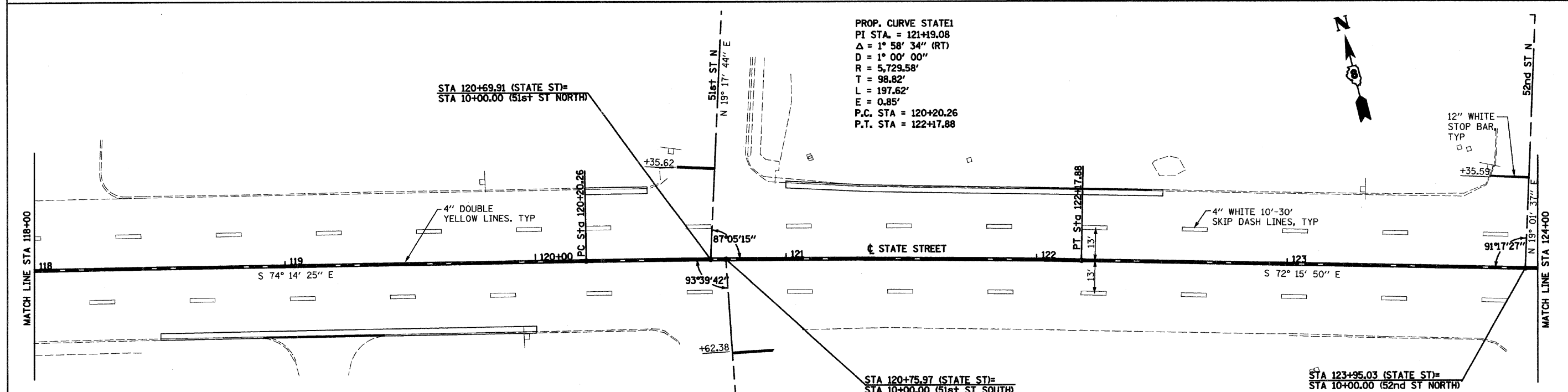
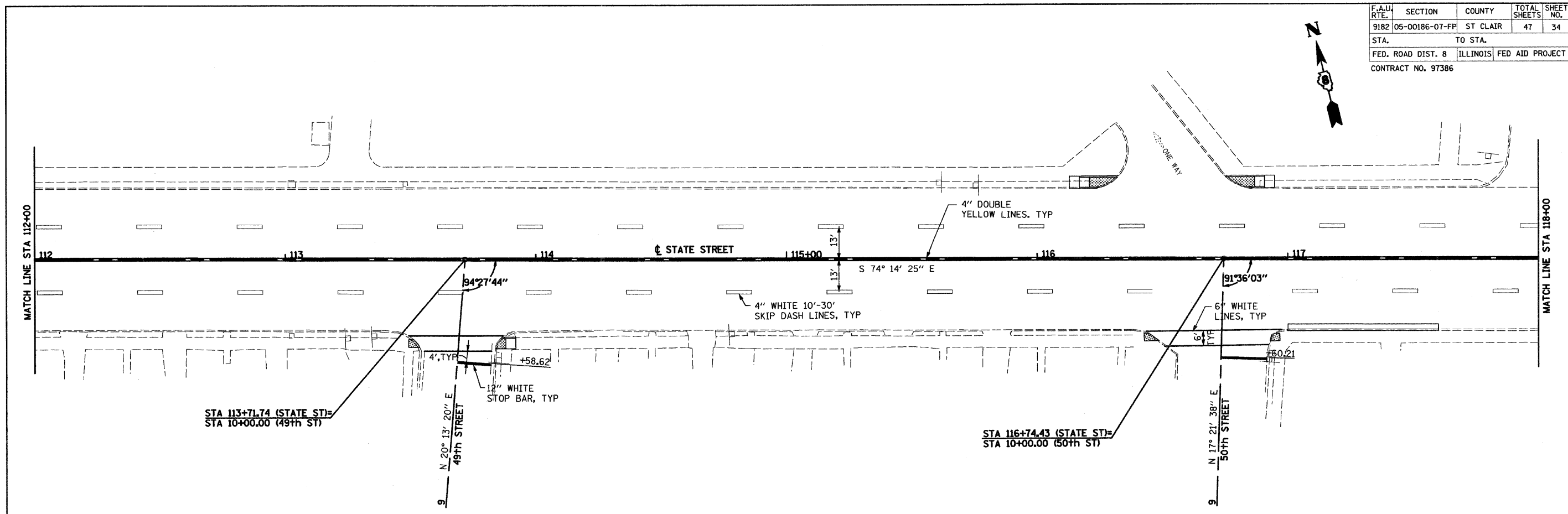


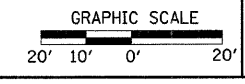
F.A.U. RTE.	SECTION	COUNTY	TOTAL SHEETS	SHEET NO.
9182	05-00186-07-FP	ST CLAIR	47	34
STA.		TO STA.		
FED. ROAD DIST. 8		ILLINOIS		FED AID PROJECT
CONTRACT NO. 97386				



PROP. CURVE STATE1
 PI STA. = 121+19.08
 Δ = 1° 58' 34" (RT)
 D = 1° 00' 00"
 R = 5,729.58'
 T = 98.82'
 L = 197.62'
 E = 0.85'
 P.C. STA = 120+20.26
 P.T. STA = 122+17.88

CITY OF EAST ST. LOUIS

PAVEMENT MARKING PLAN



SCALE: VERT. 1" = 10'
 HORIZ. 1" = 20'
 DATE: 05/28/09
 DRAWN BY: UJ
 CHECKED BY: JJC