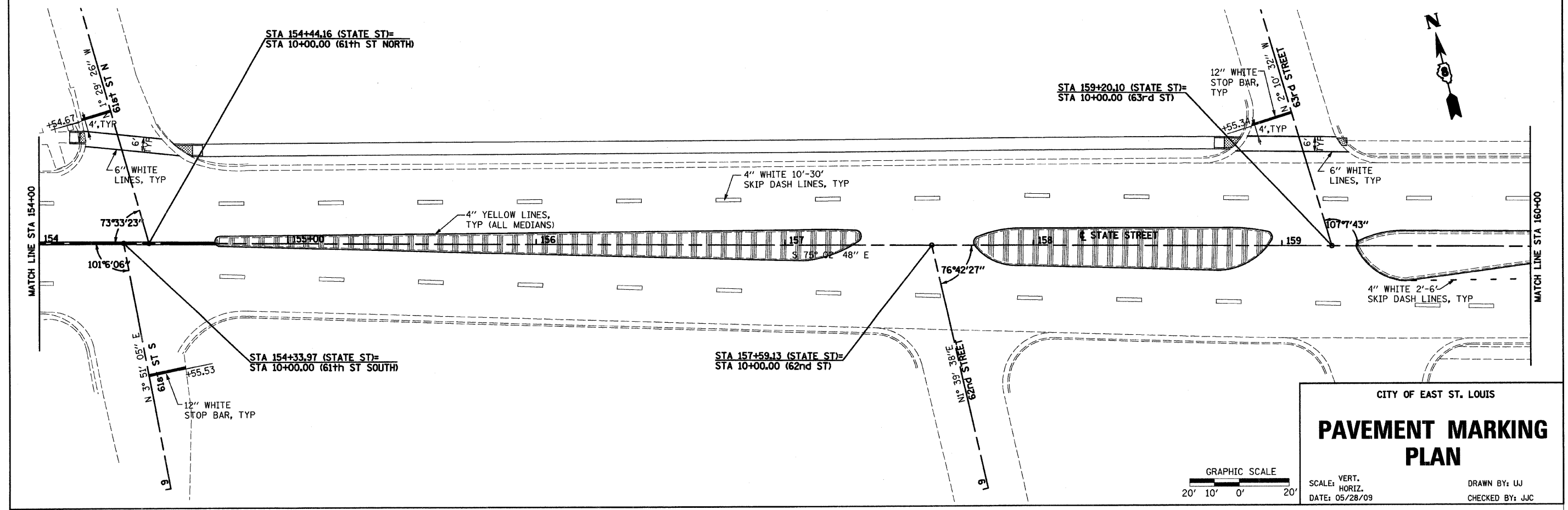
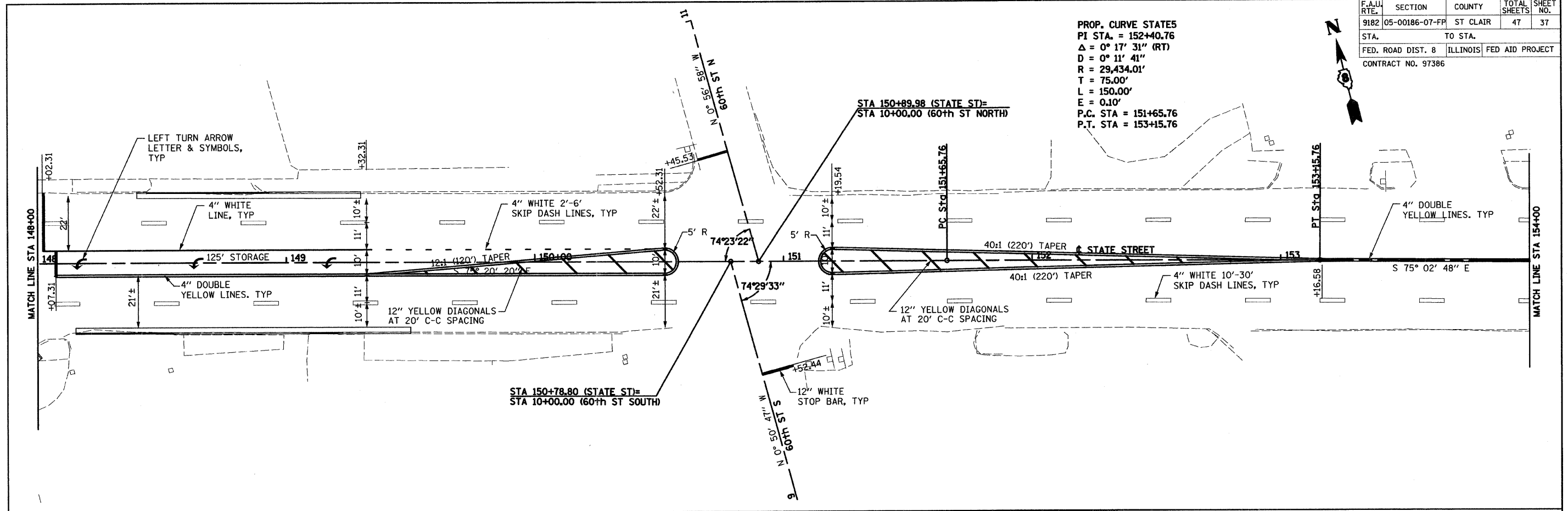


F.A.U. RTE.	SECTION	COUNTY	TOTAL SHEETS	SHEET NO.
9182	05-00186-07-FP	ST CLAIR	47	37
STA.		TO STA.		
FED. ROAD DIST. 8		ILLINOIS FED AID PROJECT		
CONTRACT NO. 97386				

PROP. CURVE STATES  
 PI STA. = 152+40.76  
 $\Delta$  = 0° 17' 31" (RT)  
 D = 0° 11' 41"  
 R = 29,434.01'  
 T = 75.00'  
 L = 150.00'  
 E = 0.10'  
 P.C. STA = 151+65.76  
 P.T. STA = 153+15.76



CITY OF EAST ST. LOUIS

## PAVEMENT MARKING PLAN

GRAPHIC SCALE  
 20' 10' 0' 20'

SCALE: VERT. \_\_\_\_\_  
 HORIZ. \_\_\_\_\_

DATE: 05/28/09

DRAWN BY: UJ  
 CHECKED BY: JJC