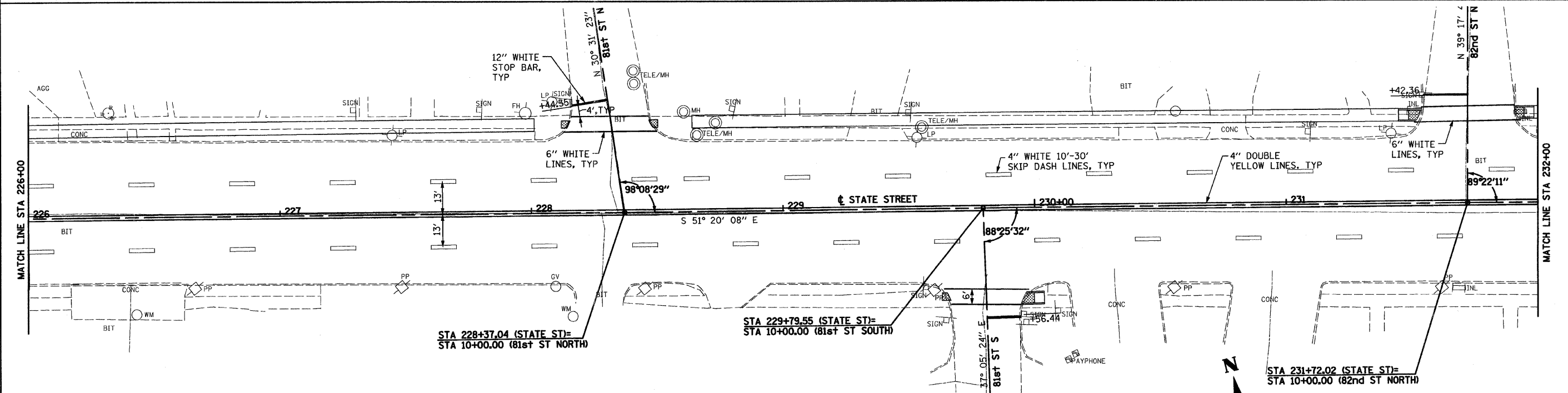
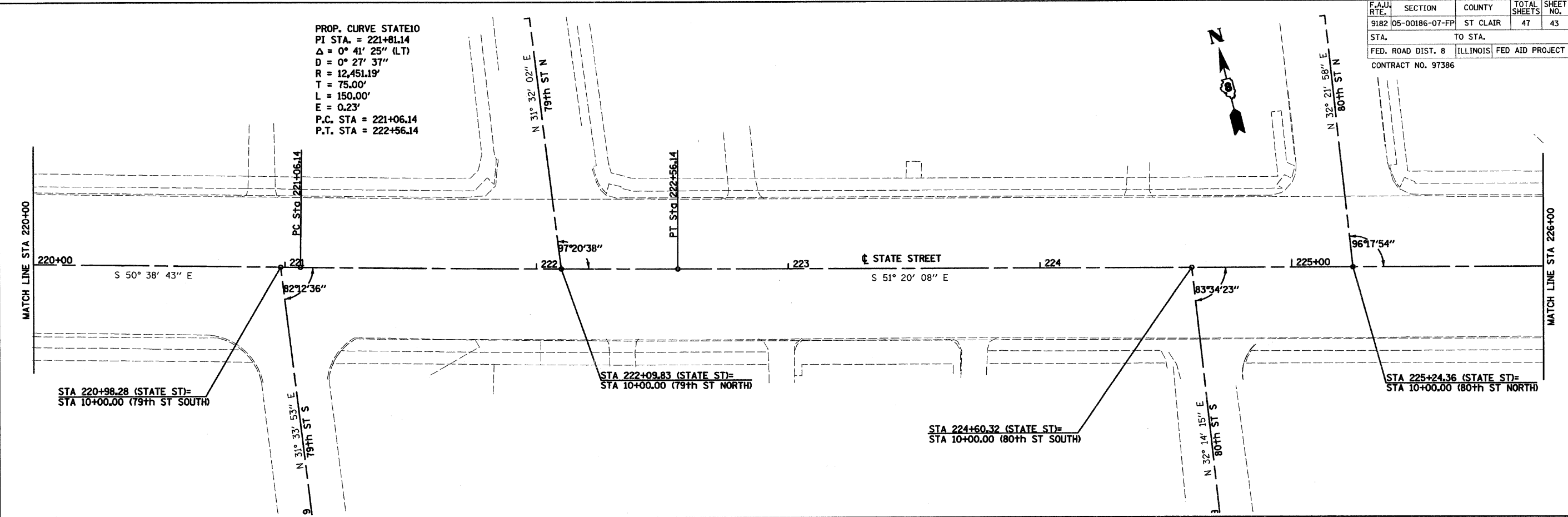


F.A.U. RTE.	SECTION	COUNTY	TOTAL SHEETS	SHEET NO.
9182	05-00186-07-FP	ST CLAIR	47	43
STA.		TO STA.		
FED. ROAD DIST. 8		ILLINOIS FED AID PROJECT		
CONTRACT NO. 97386				

PROP. CURVE STATE10
 PI STA. = 221+81.14
 $\Delta = 0^\circ 41' 25''$ (LT)
 $D = 0^\circ 27' 37''$
 $R = 12,451.19'$
 $T = 75.00'$
 $L = 150.00'$
 $E = 0.23'$
 P.C. STA = 221+06.14
 P.T. STA = 222+56.14

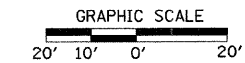


CITY OF EAST ST. LOUIS

PAVEMENT MARKING PLAN

SCALE: VERT. 1"=20'
 HORIZ. 1"=40'
 DATE: 05/28/09

DRAWN BY: UJ
 CHECKED BY: JJC



SOUTHERN ILLINOIS HEALTH CARE FOUNDATION

EASTON TIRE

WWW.MINDIPLT.COM 15/07/2008 4:18:25 PM