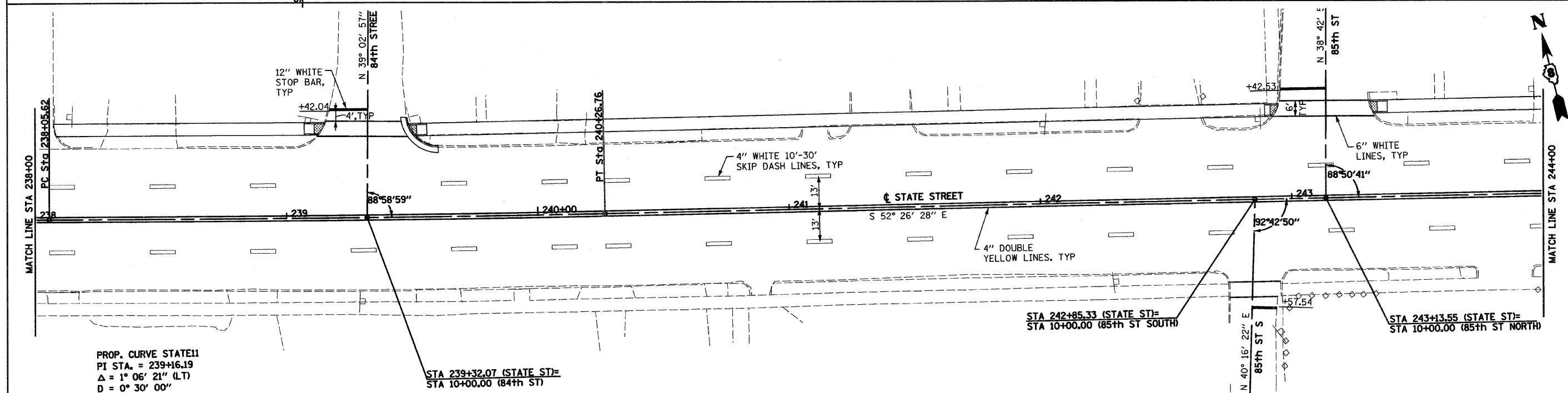
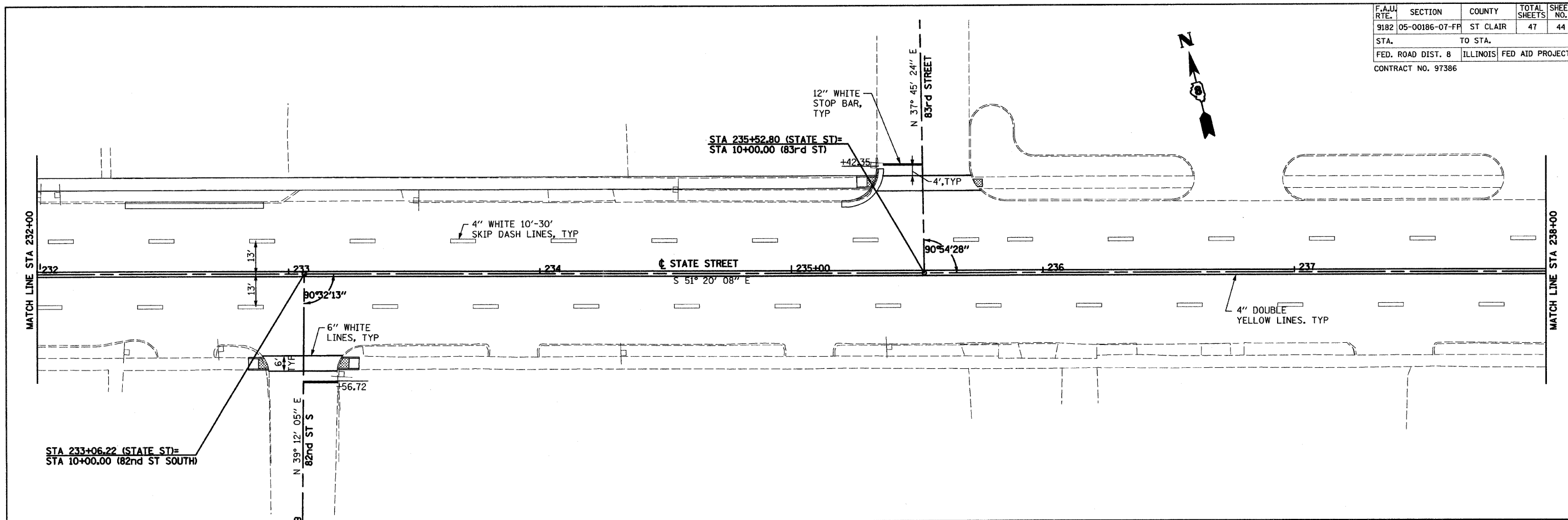


F.A.U. RTE.	SECTION	COUNTY	TOTAL SHEETS	SHEET NO.
9182	05-00186-07-FP	ST CLAIR	47	44
STA.		TO STA.		
FED. ROAD DIST. 8		ILLINOIS		FED AID PROJECT
CONTRACT NO. 97386				



PROP. CURVE STATE11  
 PI STA. = 239+16.19  
 $\Delta = 1^\circ 06' 21''$  (LT)  
 $D = 0^\circ 30' 00''$   
 $R = 11,459.16'$   
 $T = 110.57'$   
 $L = 221.14'$   
 $E = 0.53'$   
 P.C. STA = 238+05.62  
 P.T. STA = 240+26.76

CITY OF EAST ST. LOUIS

## PAVEMENT MARKING PLAN

GRAPHIC SCALE  
 20' 10' 0' 20'

SCALE: VERT. \_\_\_\_\_  
 HORIZ. \_\_\_\_\_  
 DATE: 05/28/09

DRAWN BY: LJ  
 CHECKED BY: JJC