

SECTION	COUNTY	TOTAL SHEETS	SHEET NO.
*	MADISON	5	1

FEDERAL AID PROJECT
 * 09-00006-01-RS
 CONTRACT NO. 97387

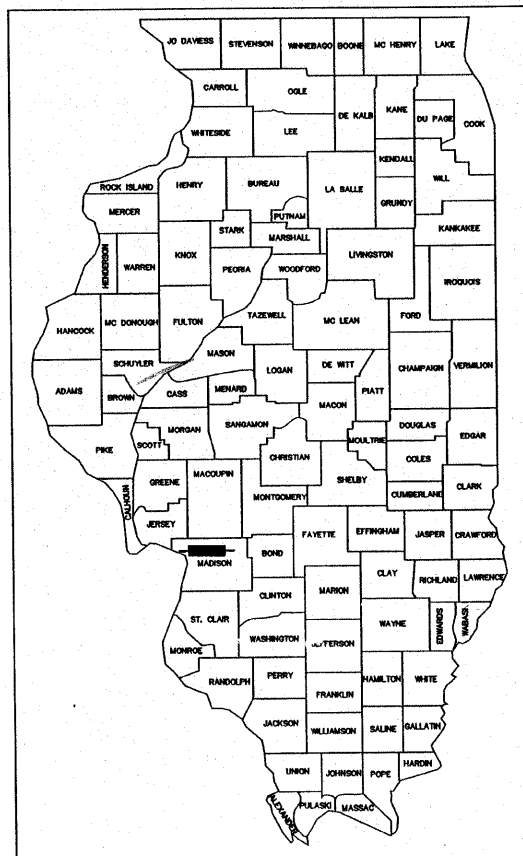
STATE OF ILLINOIS
 DEPARTMENT OF TRANSPORTATION
 DIVISION OF HIGHWAYS
 FEDERAL AID HIGHWAY
PONTOON ROAD IMPROVEMENTS
FAU ROUTE 9082
 SECTION 09-00006-01-RS
 PROJECT ARA 5011 (290)
 VILLAGE OF PONTOON BEACH
 MADISON COUNTY
 JOB C-98-344-09

FOR UTILITY LOCATION PURPOSES, THIS PROJECT IS LOCATED IN THE N.E. AND S.E. QUARTERS OF SECTION 13, TOWNSHIP 5 NORTH, RANGE 10 WEST OF THE THIRD PRINCIPAL MERIDIAN.

UTILITY LOCATION CAN BE OBTAINED BY CALLING J.U.L.I.E. (1-800-892-0123)

THE FOLLOWING AGENCIES KNOWN TO HAVE FACILITIES WITHIN THE LIMITS OF THIS IMPROVEMENT ARE SHOWN BELOW (MEMBERS OF JULIE, PHONE (800) 892-0123, ARE INDICATED BY *)

- * CHARTER COMMUNICATIONS
508 NIAGARA
EAST ALTON, IL 62024
(618) 251-2660
- * AMERITECH
203 GOETHE
COLLINSVILLE, IL 62234
(618) 346-6400
- * AMEREN IP
GAS AND ELECTRIC
2600 N. CENTER STREET
MARYVILLE, ILLINOIS 62062
(618) 346-1273
- * PONTOON BEACH PUBLIC WATER DISTRICT
3959 PONTOON ROAD
PONTOON BEACH, ILLINOIS 62040
(618) 931-2856
- * ILLINOIS AMERICAN WATER CO.
4436 INDUSTRIAL DRIVE
P.O. BOX 186
ALTON, IL 62002
(618) 466-2131
- * MADISON COUNTY SPECIAL SERVICE
AREA #1 (SANITARY)
301 EAST CHAIN OF ROCKS ROAD
GRANITE CITY, ILLINOIS 62040
(618) 931-3400



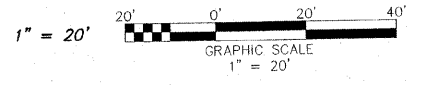
LOCATION OF SECTION INDICATED THUS:—

INDEX TO SHEETS

1. COVER SHEET
2. SUMMARY OF QUANTITIES, TYPICAL SECTIONS AND GENERAL NOTES
- 3.-5. PLAN SHEETS

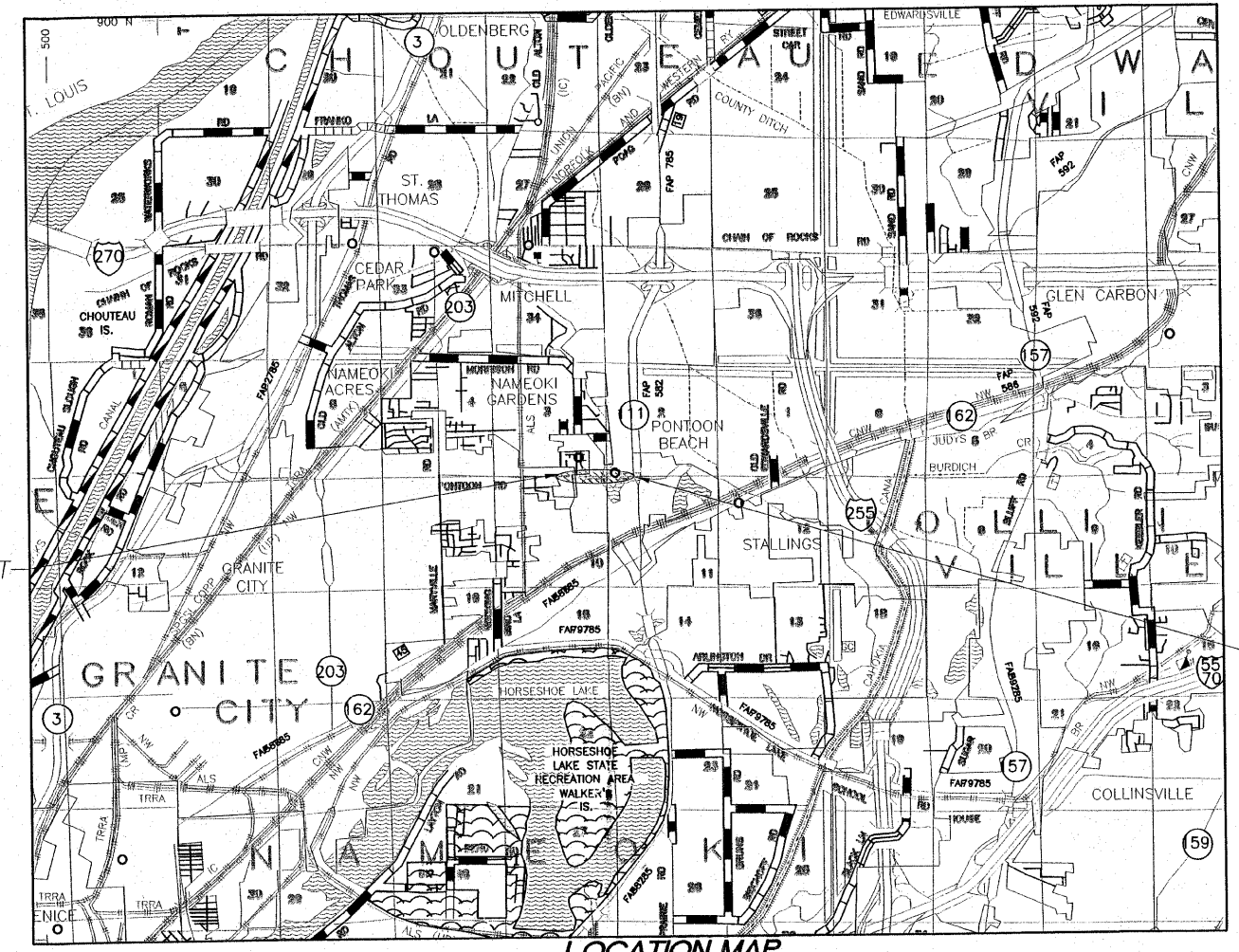
HIGHWAY STANDARDS

- 442101-07
- 442201-03
- 701101-02
- 701421-02
- 701502-03
- 701901-01
- 720006-02
- 729001-01
- 780001-02
- 781001-03
- 886001-01
- 886006-01



FULL SIZE PLANS HAVE BEEN PREPARED USING STANDARD ENGINEERING SCALES. REDUCED SIZED PLANS WILL NOT CONFORM TO STANDARD SCALES IN MAKING MEASUREMENTS ON REDUCED PLANS THE ABOVE SCALE MAY BE USED

DESIGN DESIGNATION - 12,700 ADT (2010) URBAN MINOR ARTERIAL
 DESIGN SPEED = 35 M.P.H.



LOCATION MAP

NO SCALE

BEGIN PROJECT
 STA. 70+38

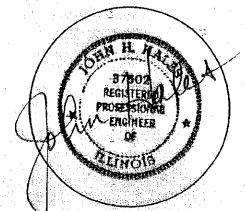
END PROJECT
 STA. 98+75

NET LENGTH OF PONTOON ROAD IMPROVEMENT = 2,837 FEET = 0.537 MILES

APPROVED: *Shirley Ruth* 20 09
 Mayor
 LOCAL AGENCY REPRESENTATIVE

PASSED: *5/28* 20 09
 DISTRICT 8 ENGINEER OF LOCAL ROADS & STREETS

RELEASING FOR BID
 BASED ON LIMITED
 REVIEW: *5/28/09*
 MARY C. LAMIE, P.E.
 DEPUTY DIRECTOR OF HIGHWAYS
 REGION FIVE ENGINEER
 STATE OF ILLINOIS
 DEPARTMENT OF TRANSPORTATION



DATED: MAY, 2009
 EXPIRES: NOVEMBER 30, 2009

SMS Sheppard, Morgan & Schwaab, Inc.
 CONSULTING ENGINEERS AND LAND SURVEYORS
 215 Market Street, P.O. Box E, Alton, IL 62002 618/462-9755 E-mail: msll@smsgengineers.com
 10 Central Industrial Drive Suite 3, Granite City, IL 62040 618/977-8700 E-mail: mail@smsgengineers.com

SUMMARY OF QUANTITIES

QUANTITY	UNIT	ITEM	CODE NUMBER
1,161	Gallon	Bituminous Materials (Prime Coat)	40600100
23	Ton	Aggregate (Prime Coat)	40600300
1,091	Ton	Hot-Mix Asphalt Surface Course, Mix "D", N70	40603340
11,608	Sq. Yd.	Hot-Mix Asphalt Surface Removal 1 1/2"	44000155
83	Sq. Yd.	Class D Patches, Type II, 10 Inch	44201765
54	Sq. Yd.	Class D Patches, Type III, 10 Inch	44201769
58	Sq. Yd.	Class D Patches, Type IV, 10 Inch	44201771
1,588	Foot	Saw Cuts	44213200
8,511	Foot	Strip Reflective Crack Control Treatment	44300200
1	L. Sum	Mobilization	67100100
1	L. Sum	Traffic Control and Protection	70101700
2,464	Foot	Short Term Pavement Marking	70300100
374	Sq. Ft.	Work Zone Pavement Marking Removal	70301000
30	Sq. Ft.	Sign Panel-Type 1	72000100
70	Foot	Metal Post-Type B	72900200
437	Sq. Ft.	Thermoplastic Pavement Marking-Letters and Symbols	78000100
7,016	Foot	Thermoplastic Pavement Marking-Line 4"	78000200
63	Foot	Thermoplastic Pavement Marking-Line 12"	78000600
120	Foot	Thermoplastic Pavement Marking-Line 24"	78000850
136	Each	Raised Reflective Pavement Markers	78100100
140	Each	Raised Reflective Pavement Marker Removal	78300200
520	Foot	Detector Loop, Type I	88600100
576	Each	Drill and Grout Dowel Bars	20013900
234	Sq. Yd.	Class B Patches (SPECIAL)	XX005138

* Specialty Items

PAVEMENT MARKING SCHEDULE

ITEM	QUANTITY	COLOR
THERMOPLASTIC PAVEMENT MARKING-LINE 4"	6,750 FOOT	YELLOW
THERMOPLASTIC PAVEMENT MARKING-LINE 4"	286 FOOT	WHITE
THERMOPLASTIC PAVEMENT MARKING-LINE 4"	7,016 FOOT	TOTAL
THERMOPLASTIC PAVEMENT MARKING-LINE 12"	63 FOOT	WHITE
THERMOPLASTIC PAVEMENT MARKING-LINE 24"	120 FOOT	WHITE
RAISED REFLECTIVE PAVEMENT MARKERS	128 EACH	DOUBLE AMBER
RAISED REFLECTIVE PAVEMENT MARKERS	8 EACH	SINGLE CRYSTAL
RAISED REFLECTIVE PAVEMENT MARKERS	136 EACH	TOTAL

DETECTOR LOOP REQUIREMENTS AND CALCULATIONS

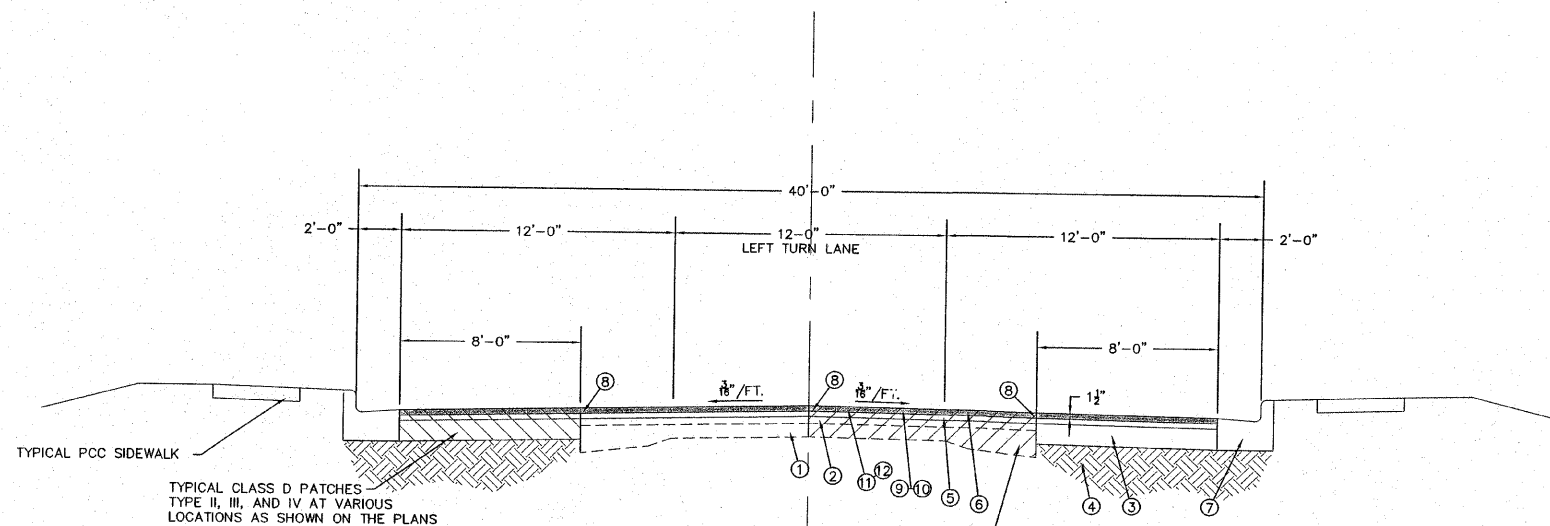
PONTOON RD. / IL. ROUTE 111

LOOP #	DIRECTION	PHASE	LOOP SIZE (FT.)	REQ'D NUMBER OF TURNS	CALCULATED INDUCTANCE (MICROHENRIES)	CALCULATED RESISTANCE (OHMS)
1	EB LT.	4	6' X 50'	3-6-3	795	1.8
2	EB THRU.	4	6' X 50'	3-6-3	792	1.7
3	EB RT.	4	6' X 30'	3-6-3	491	1.1

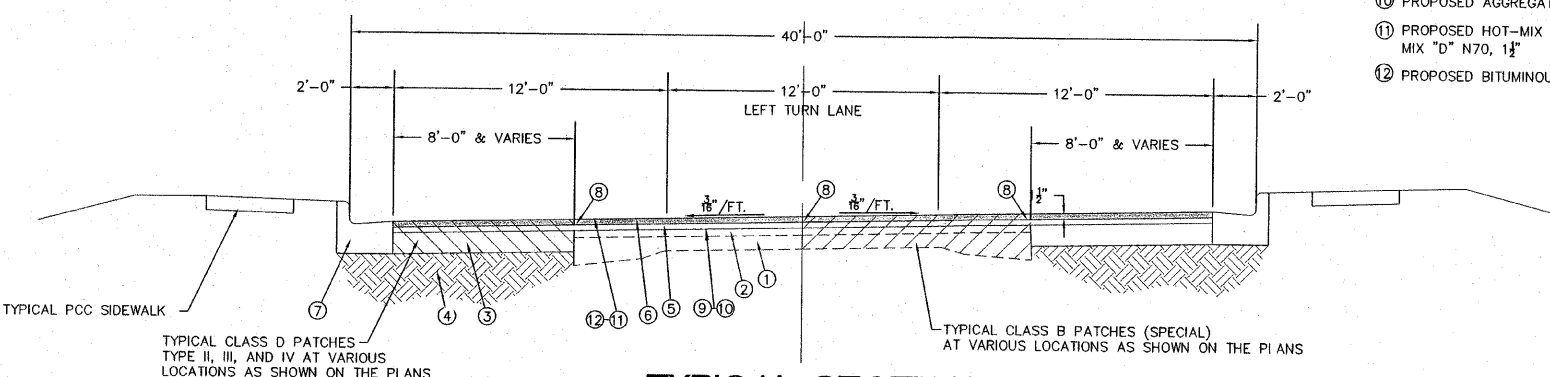
THE ABOVE VALUES ARE CALCULATIONS OF COMBINED LOOP AND LEAD-IN INDUCTANCE, AND RESISTANCE. ACTUAL MEASURED VALUES SHOULD BE WITHIN ±20% OF THESE VALUES.

GENERAL NOTES

- THIS IMPROVEMENT SHALL BE CONSTRUCTED IN ACCORDANCE WITH THE I.D.O.T. "STANDARD SPECIFICATIONS FOR ROAD AND BRIDGE CONSTRUCTION" ADOPTED JANUARY 1, 2007 AND THE SPECIAL PROVISIONS FOR THIS PROJECT.
- INFORMATION ON THE PLANS REGARDING UTILITIES IS TAKEN FROM THE BEST AVAILABLE RECORDS, BUT IS NOT REPRESENTED AS BEING CORRECT OR COMPLETE. THE CONTRACTOR SHALL NOTIFY J.U.L.I.E. IN ADVANCE OF CROSSING OVER OR UNDER UTILITIES.
- THE CONTRACTOR SHALL USE ALL DUE PRECAUTION NOT TO DAMAGE OR DISTURB UTILITIES. THE ENTIRE COST OF MAKING REPAIRS TO, OR REPLACEMENT OF, ANY DAMAGED LINE WILL BE THE FULL RESPONSIBILITY OF THE CONTRACTOR.
- HOT-MIX ASPHALT SURFACE COURSE QUANTITIES HAVE BEEN CALCULATED USING A RATE OF 125 LB/SY-IN.
- "ROAD CONSTRUCTION AHEAD" SIGNS SHALL BE PLACED ON EACH END OF THE PROJECT AND ON ALL INTERSECTING SIDE ROADS. COST TO BE INCLUDED IN THE PAY ITEM TRAFFIC CONTROL AND PROTECTION. ALL CONSTRUCTION SIGNS SHALL BE 48" X 48" FLUORESCENT ORANGE.
- COMMITMENTS PLEDGED: NONE



TYPICAL SECTION
STA. 70+38 - 82+48.16
STA. 90+48.16 - 98+75



TYPICAL SECTION
STA. 82+48.16 - 90+48.16

- EXISTING PCC PAVEMENT (10"-8"-10")
- EXISTING BITUMINOUS CONCRETE (±3")
- EXISTING BITUMINOUS WIDENING (7")
- MODIFIED LIME SOIL
- EXISTING BINDER COURSE (3/4")
- EXISTING SURFACE COURSE (1 1/2")
- EXISTING COMBINATION CONCRETE CURB & GUTTER, TYPE B-6.24
- PROPOSED STRIP REFLECTIVE CRACK CONTROL TREATMENT
- PROPOSED BITUMINOUS MATERIALS (PRIME COAT)
- PROPOSED AGGREGATE (PRIME COAT)
- PROPOSED HOT-MIX ASPHALT SURFACE COURSE, MIX "D" N70, 1 1/2"
- PROPOSED BITUMINOUS SURFACE REMOVAL, 1 1/2"

LEGEND

- CLASS B PATCHES (SPECIAL) OR CLASS D PATCHES
- SURFACE REMOVAL AND BITUMINOUS SURFACE COURSE
- POWER POLE
- TRIP SIGNAL
- MANHOLE

HOT-MIX ASPHALT REQUIREMENTS

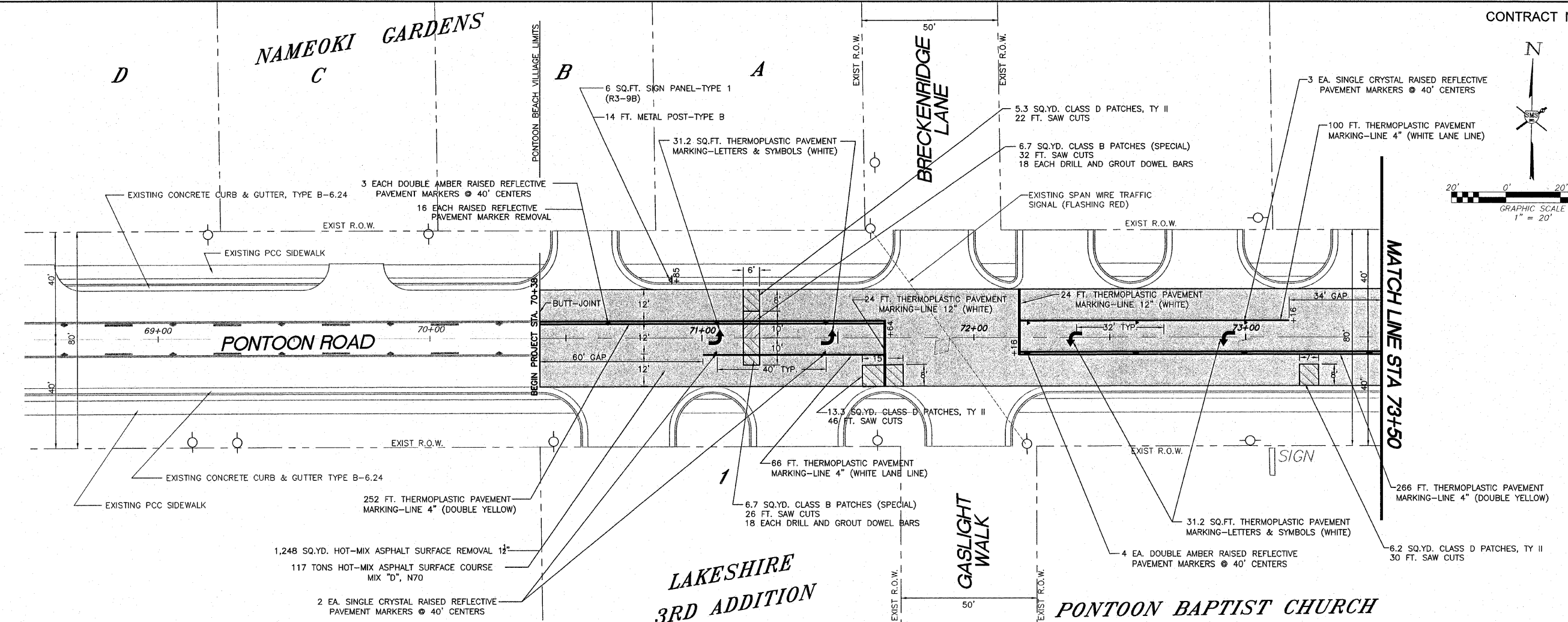
MIXTURE USE	SURFACE	PATCH
AC/PG	PG 64-22	PG 64-22
RA? % MAX	10%	15%
DESIGN AIR VOIDS	4.0% @ Ndes = 70	4.0% @ Ndes = 70
MIX COMPOSITION (GRADATION MIXTURE)	12.5	IL-19.0
FRICTION AGG	MIXTURE D	

REVISIONS	DATE	DESCRIPTION
6-11-09		Revised All Class D Patches Items to Reflect Patch Dept.

SMS Sheppard, Morgan & Schwaab, Inc.
CONSULTING ENGINEERS AND LAND SURVEYORS
216 Market Street, P.O. Box E, Alton, IL 62002 618-462-9755 E-mail: sms@smsengineers.com
10 Central Industrial Drive Suite 3, Granite City, IL 62040 618-977-2700 E-mail: mail@smsengineers.com

VILLAGE OF PONTOON BEACH
PONTOON ROAD RESURFACING PROJECT
SECTION 09-00006-01-RS
SUMMARY OF QUANTITIES, GENERAL NOTES, TYPICAL SECTIONS

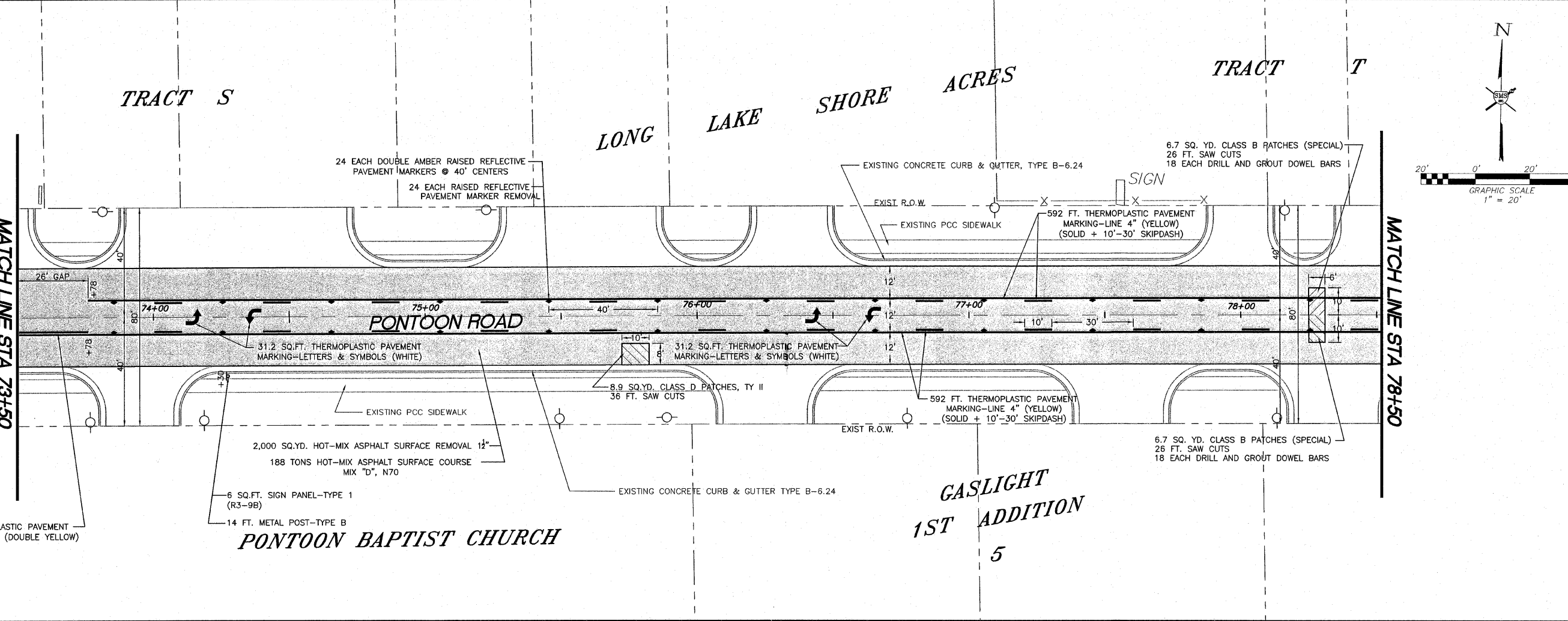
DWG. NO.	TYP SEC SHT 2_DWG
REF. BK.	PG.
JOB NO.	266059
DSN. E.	JHH
DWN. BY:	CL
CHK. BY:	JHr
DATE:	FEBRUARY, 2009
SCALE:	AS NOTED
SHEET	2 OF 5



REVISIONS

NO.	DATE	DESCRIPTION

SMS Sheppard, Morgan & Schwaab, Inc.
 CONSULTING ENGINEERS AND LAND SURVEYORS
 215 Harner Street, P.O. Box E, Alton, IL 62002-6184/62-9735 - E-mail: sms@sms.com
 10 Central Industrial Drive Suite 3, Granite City, IL 62040 618371-8700 E-mail: smsg@sms.com
ENGINEERS



SMS Sheppard, Morgan & Schwaab, Inc.
 CONSULTING ENGINEERS AND LAND SURVEYORS
 215 Harner Street, P.O. Box E, Alton, IL 62002-6184/62-9735 - E-mail: sms@sms.com
 10 Central Industrial Drive Suite 3, Granite City, IL 62040 618371-8700 E-mail: smsg@sms.com
ENGINEERS

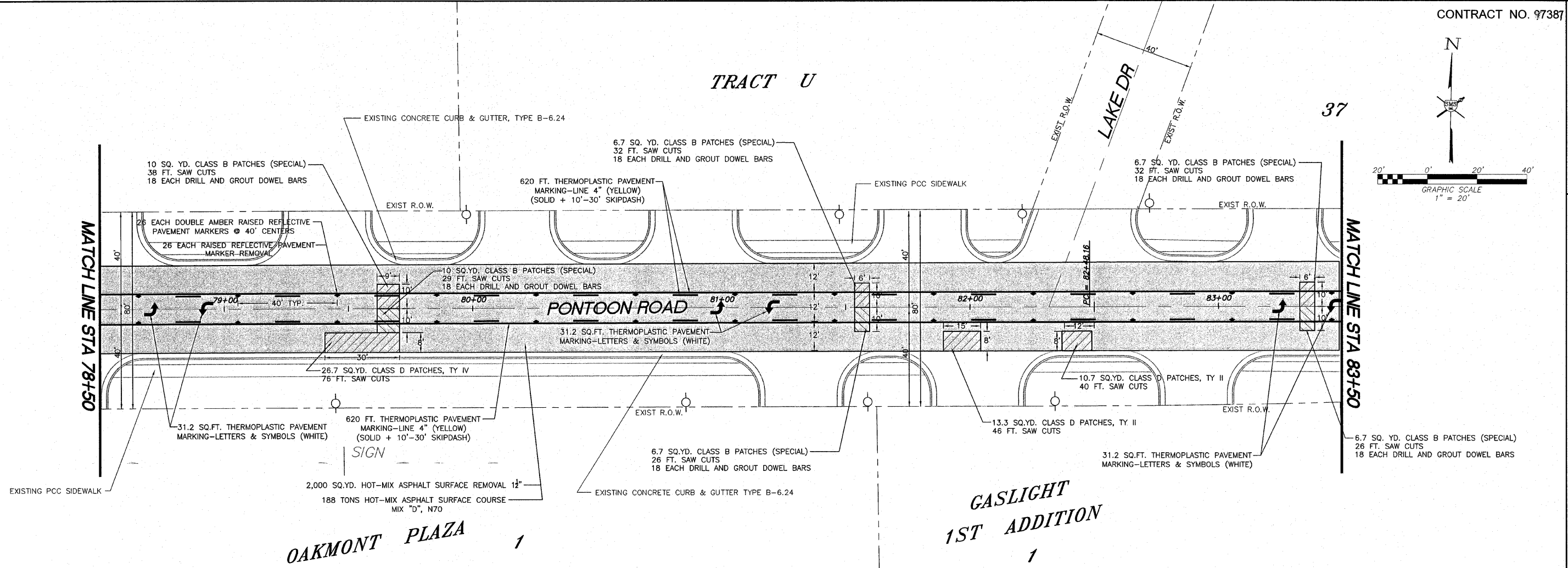
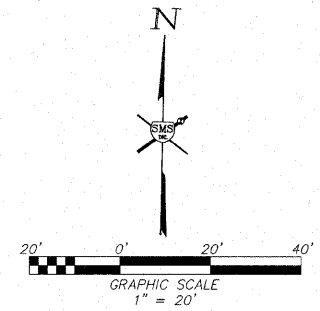
VILLAGE OF PONTOON BEACH
 PONTOON ROAD RESURFACING PROJECT
 SECTION 09-00006-01-RS
 PLAN SHEET

OVERLAY PPT.DWG
 REF. BK. PG.
 JOB NO. 266059
 DSN. BY: JHH
 DWN. BY: JDP
 CHK. BY: JHH
 DATE: FEBRUARY, 2009
 SCALE: 1" = 20'
 SHEET 3 OF 5

GASLIGHT
 1ST ADDITION
 5

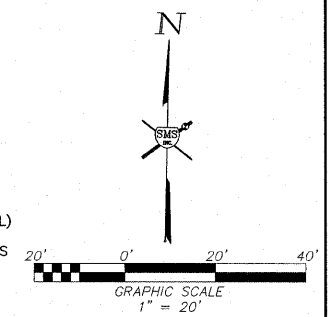
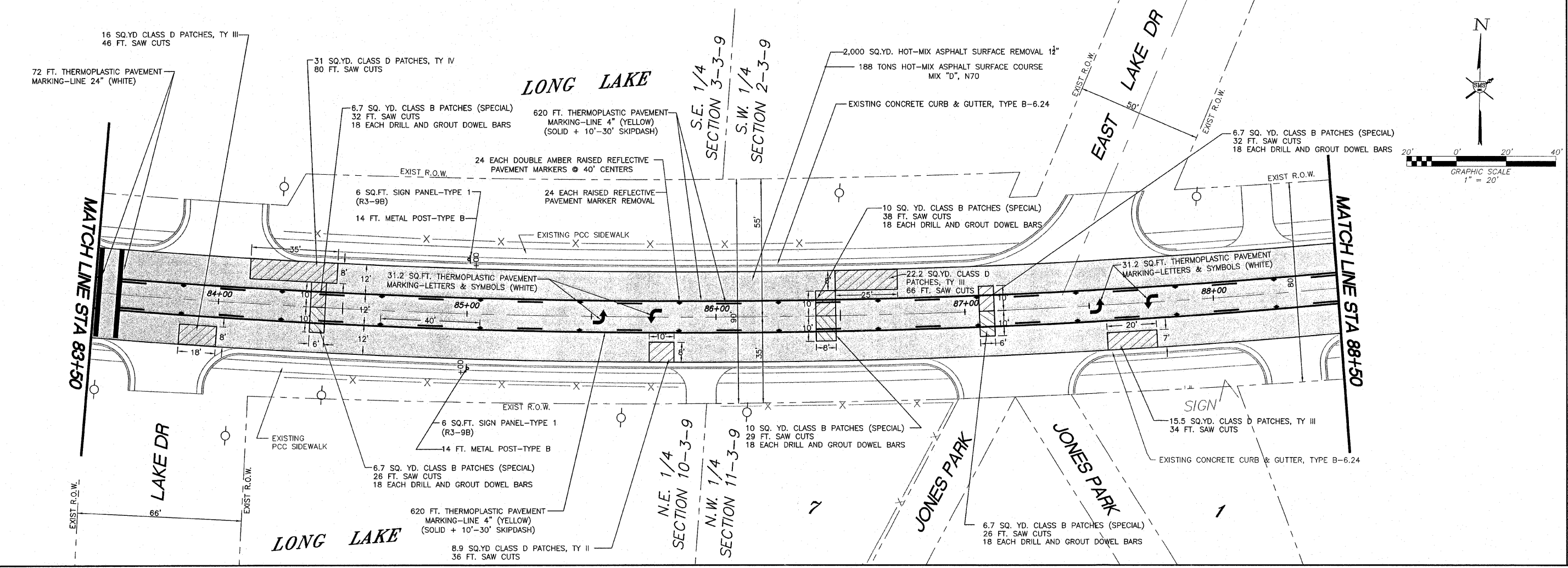
and Projects\Pontoon 2004 MFT\dwg\overlay ppt.dwg, 5/27/2009 2:17:51 PM, cpm11, 1/20

TRACT U



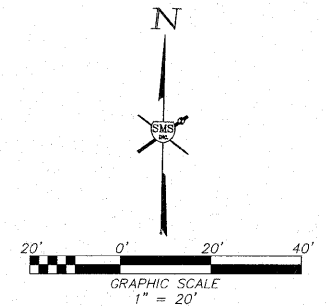
REVISIONS

SMS ENGINEERS
 Sheppard, Morgan & Schwaab, Inc.
 CONSULTING ENGINEERS AND LAND SURVEYORS
 215 Market Street, P.O. Box E, Alton, IL 62002-6785, E-mail: sms@smse.com
 10 Central Indiana Drive Suite 3, Grmaha, IN, 46040, 618877-8700, E-mail: smsp@smse.com



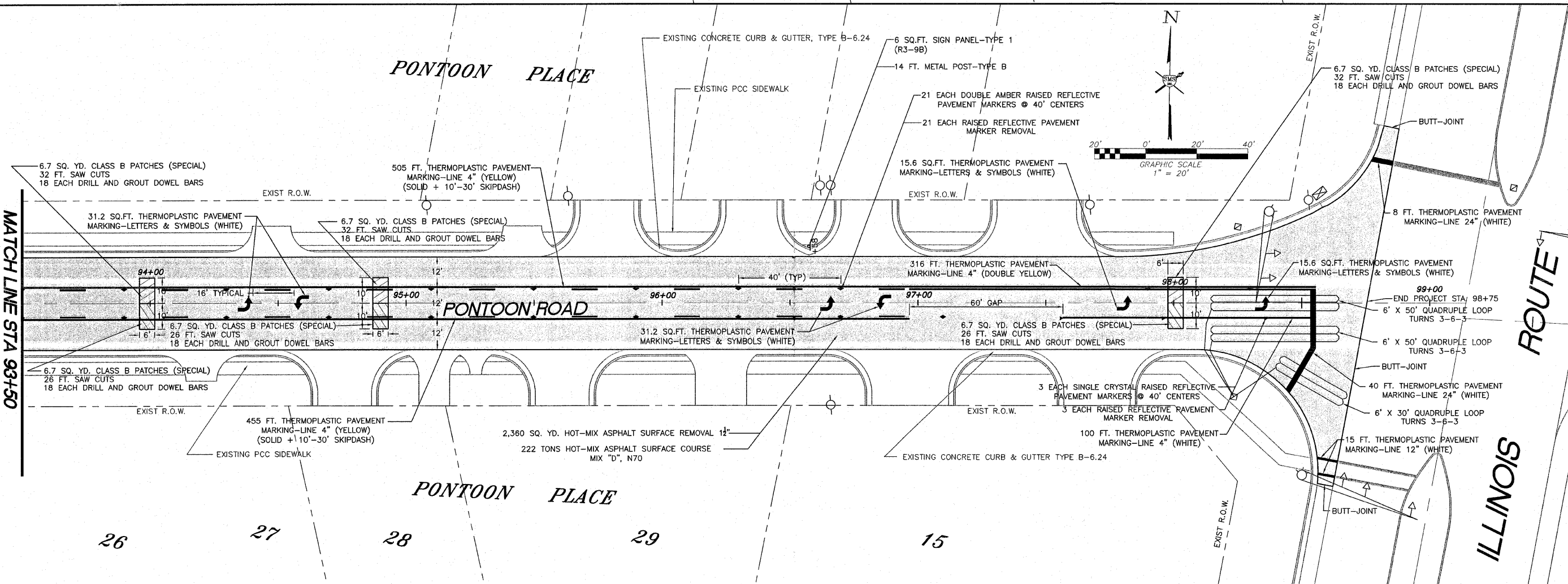
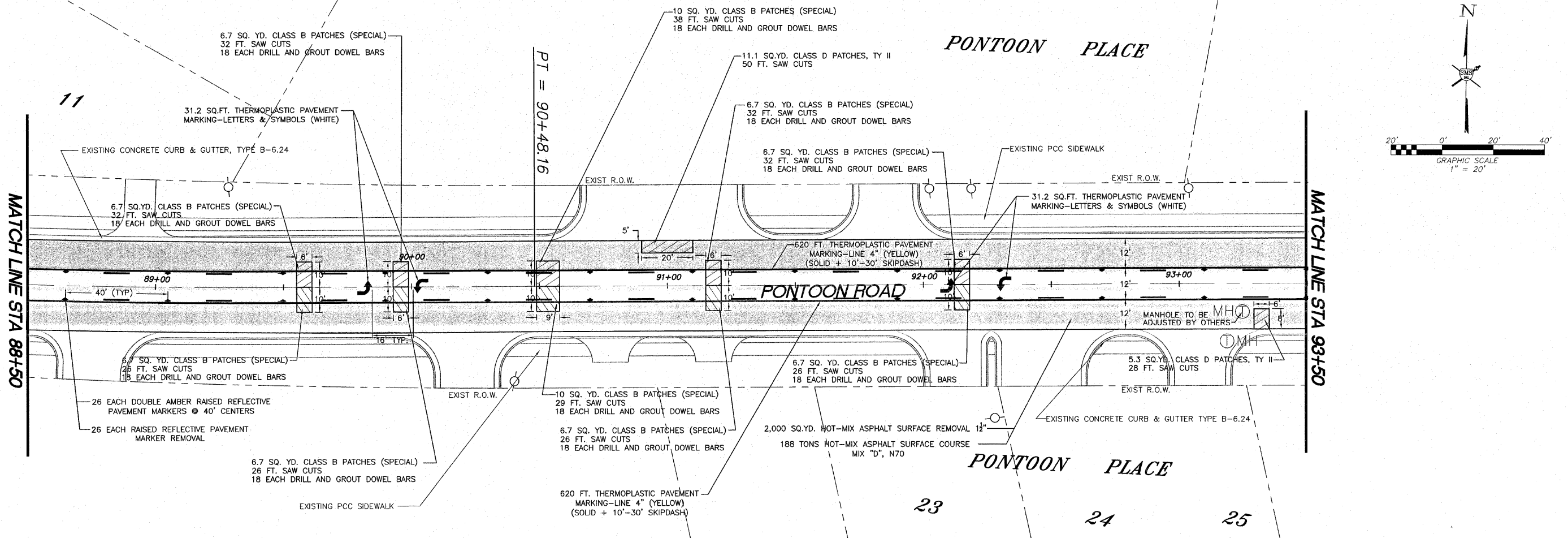
VILLAGE OF PONTON BEACH
 PONTON ROAD RESURFACING PROJECT
 SECTION 09-00006-01-RS
 PLAN SHEET

OVERLAY PPT.DWG	PG.
REF. BK.	JOB NO. 266059
DSN. BY: JHH	DWN. BY: JHH
CHK. BY: JHH	DATE: FEBRUARY, 2009
SCALE: 1"=20'	SHEET 4 OF 5



REVISIONS

SMS Sheppard, Morgan & Schwaab, Inc. CONSULTING ENGINEERS AND LAND SURVEYORS
215 Market Street, P.O. Box E, Alton, IL 62002-6776; E-mail: sms@smss.com
10 Central Industrial Drive, Suite 3, Granite City, IL 62040; 618/877-8700; E-mail: smg@smss.com



VILLAGE OF PONTON BEACH
PONTON ROAD RESURFACING PROJECT
SECTION 09-00006-01-RS
PLAN SHEET

OVERLAY PPT.DWG
REF. BK. PG.
JOB NO. 266059
DSN. BY: JHH
DWN. BY: JCP
CHK. BY: JHH
DATE: FEBRUARY, 2009
SCALE: 1"=20'
SHEET 5 OF 5