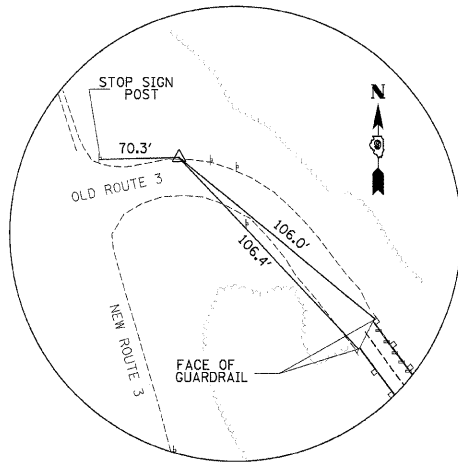
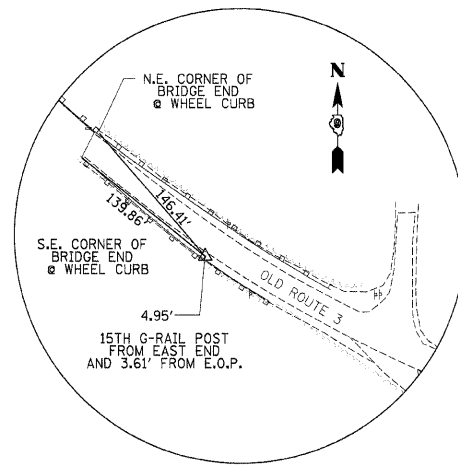


ALIGNMENT & VERTICAL CONTROL



CONTROL POINT 4



CONTROL POINT 5

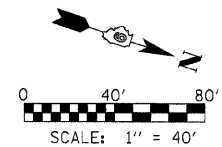
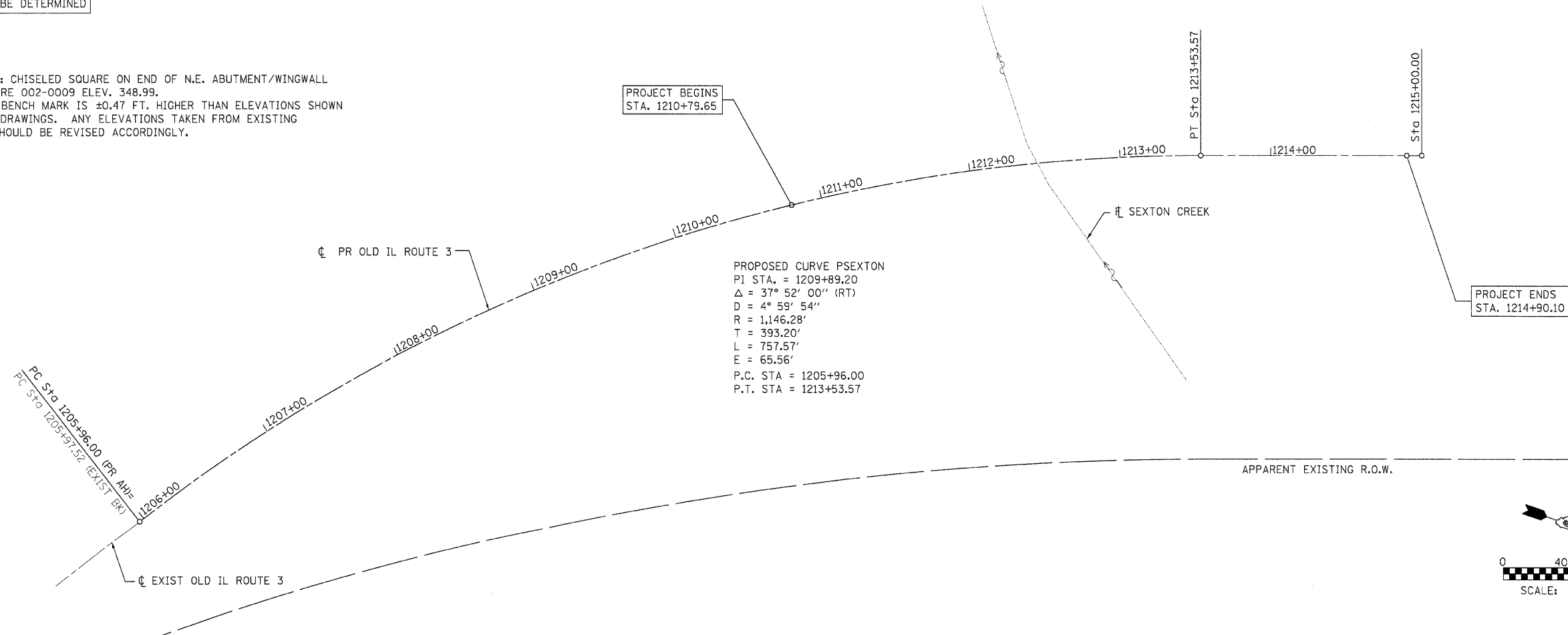
CENTERLINE CONTROL POINTS					
POINT	NORTHING	EASTING	STATION	OFFSET	DESCRIPTION
PI	212184.01	2505770.45	1209+89.20	0.00	TBD
PC	212080.76	2506149.85	1205+96.00	0.00	TBD
PT	212498.41	2505534.31	1213+53.57	0.00	TBD

TBD = TO BE DETERMINED

HORIZONTAL CONTROL POINTS					
POINT	NORTHING	EASTING	STATION	OFFSET	DESCRIPTION
4	212225.30	2505799.98	1216+75.75*	39.37 LT	IP WITH CAP
5	211979.38	2506450.28	1209+73.55	14.81 LT	IP WITH CAP

* NOTE: STA/OFFSET IS FROM EXTENDED FORWARD TANGENT OF PROPOSED CURVE

BENCH MARK: CHISELED SQUARE ON END OF N.E. ABUTMENT/WINGWALL OF STRUCTURE 002-0009 ELEV. 348.99.
 DATUM FOR BENCH MARK IS ±0.47 FT. HIGHER THAN ELEVATIONS SHOWN ON RECORD DRAWINGS. ANY ELEVATIONS TAKEN FROM EXISTING DRAWINGS SHOULD BE REVISED ACCORDINGLY.



FILE NAME = ...Roadway\Sheets\Alignment.dgn	USER NAME = Plotted by Administrator	DESIGNED - KHH	REVISED -
		DRAWN - KHH	REVISED -
		CHECKED - FML	REVISED -
		DATE - 9/2008	REVISED -

STATE OF ILLINOIS
 DEPARTMENT OF TRANSPORTATION

ALIGNMENT & SURVEY CONTROL POINTS
 OLD IL ROUTE 3 OVER SEXTON CREEK

SCALE: SHEET NO. . OF . SHEETS STA. 1210+79.65 TO STA. 1214+90.10

S.B.I. RTE.	SECTION	COUNTY	TOTAL SHEETS	SHEET NO.
150	(133A)D, I	ALEXANDER	32	5
CONTRACT NO. 98910				
FED. ROAD DIST. NO. [ILLINOIS] FED. AID PROJECT				