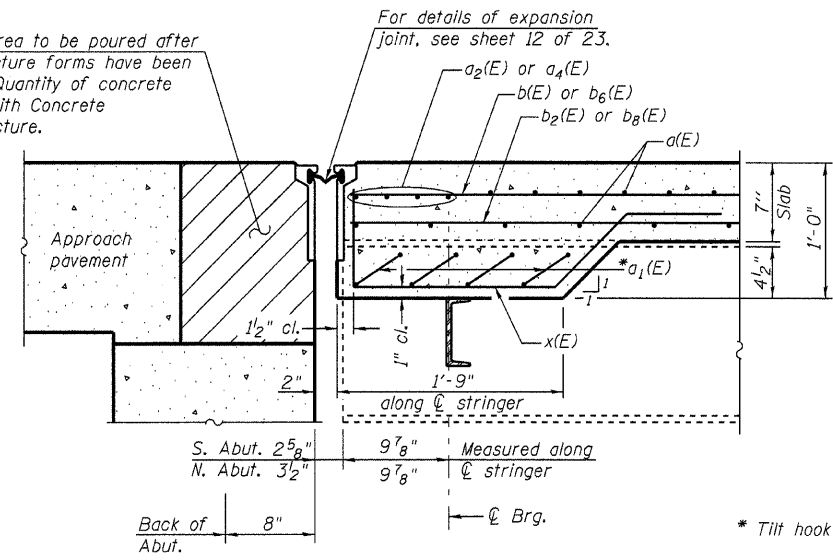


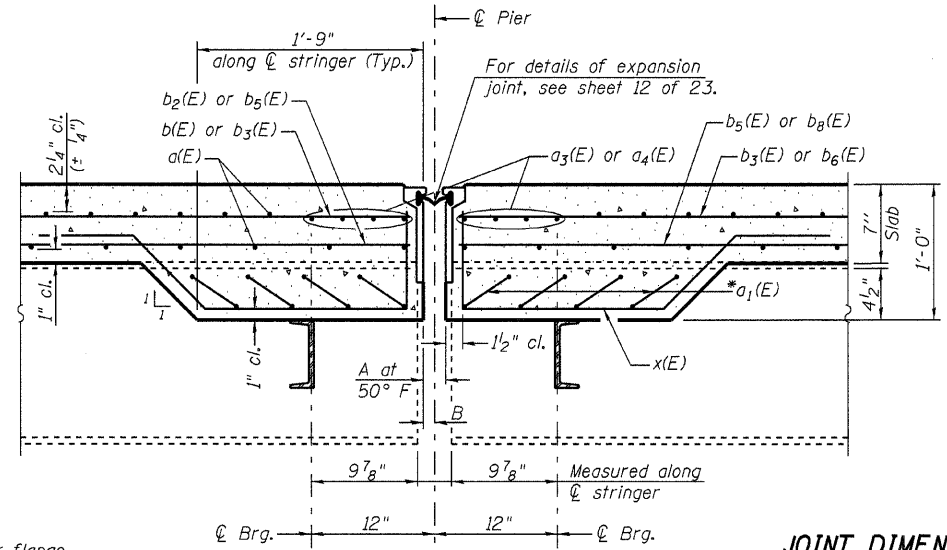
Contract #98910

Hatched area to be poured after superstructure forms have been removed. Quantity of concrete included with Concrete Superstructure.



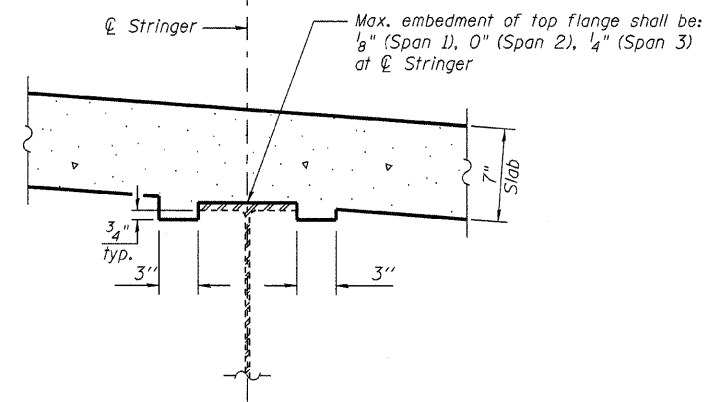
SECTION A-A

(Dimensions at Rt. L's to Abut., unless noted)



SECTION B-B

(Dimensions at Rt. L's to Pier, unless noted)



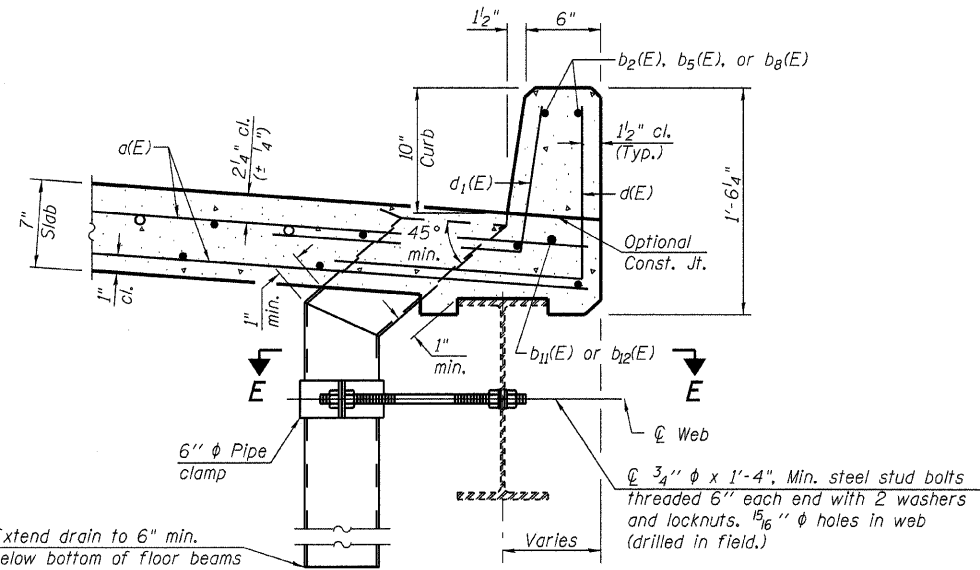
STRINGER FILLET DETAIL

JOINT DIMENSIONS

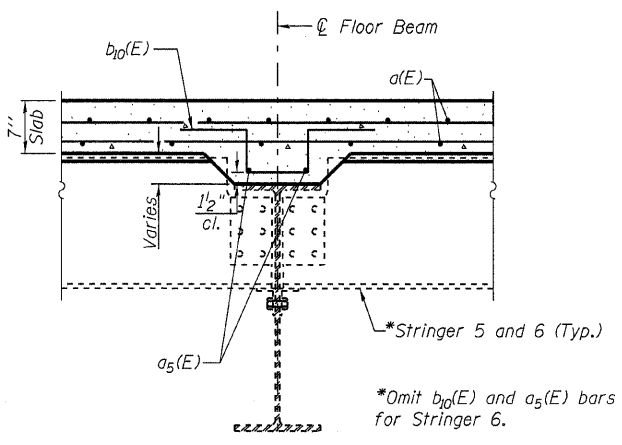
	A	B
Pier 1	2 1/2"	1 1/4"
Pier 2	2"	1"

**SUPERSTRUCTURE
BILL OF MATERIAL**

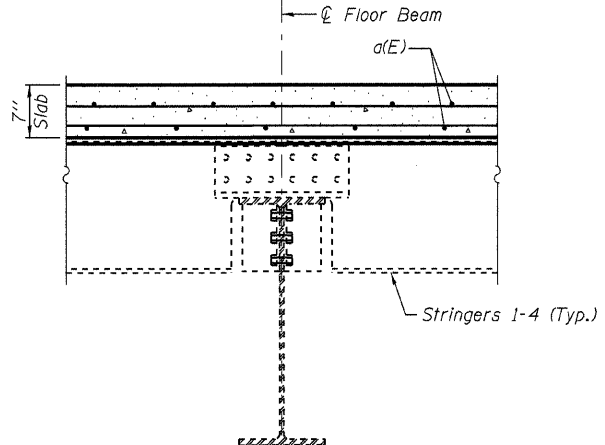
Bar	No.	Size	Length	Shape
a(E)	811	#5	23'-9"	
a1(E)	120	#5	5'-7"	
a2(E)	4	#6	24'-4"	
a3(E)	8	#6	24'-10"	
a4(E)	12	#6	26'-3"	
a5(E)	28	#5	0'-10"	
b(E)	46	#5	23'-7"	
b1(E)	46	#5	19'-9"	
b2(E)	78	#5	28'-10"	
b3(E)	46	#5	30'-10"	
b4(E)	115	#5	24'-1"	
b5(E)	104	#5	44'-4"	
b6(E)	46	#5	30'-11"	
b7(E)	23	#5	23'-1"	
b8(E)	78	#5	28'-5"	
b9(E)	308	#6	10'-0"	
b10(E)	42	#5	6'-3"	
b11(E)	16	#6	21'-11"	
b12(E)	14	#6	26'-4"	
d(E)	672	#5	2'-4"	L
d1(E)	672	#5	2'-0"	L
x(E)	138	#5	5'-6"	
Reinforcement Bars, Epoxy Coated		Pound	49500	
Concrete Superstructure		Cu. Yd.	197.8	



SECTION THRU CURB

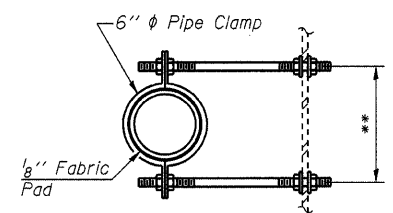


SECTION C-C
(At Floor Beam)

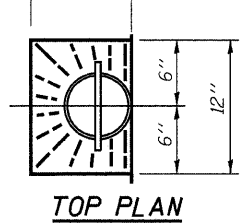


SECTION D-D
(At Midspan)

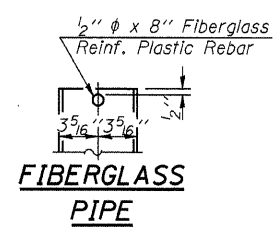
FLOOR BEAM FILLET DETAILS



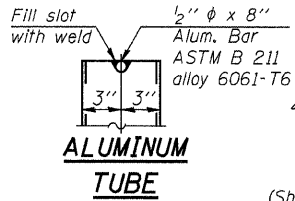
SECTION E-E
** Dimension as required by Pipe Clamp



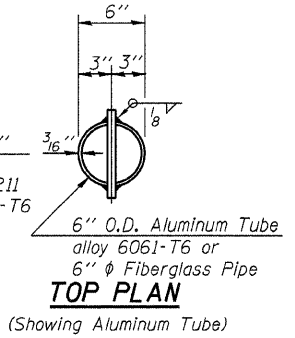
TOP PLAN



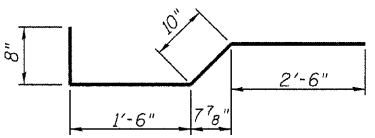
FIBERGLASS PIPE



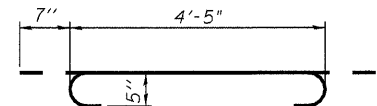
ALUMINUM TUBE



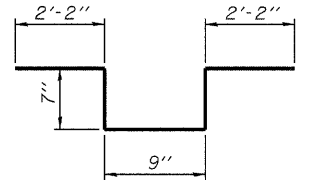
TOP PLAN
(Showing Aluminum Tube)



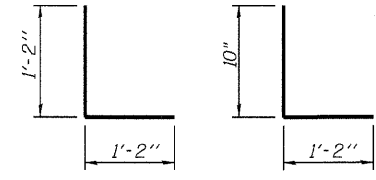
BAR x(E)



BAR a1(E)



BAR b10(E)



BAR d(E)

BAR d1(E)

(Bend d(E) and d1(E) bars to fit as necessary)

Notes:
The exterior surfaces of the floor drains shall be painted with the finish coat as specified in the special provisions for Cleaning and Painting New Metal Structures. The exterior surfaces of the drains shall be cleaned according to Steel Structures Painting Council's Spec. SSPC-SP1 prior to painting.
Fiberglass pipe shall conform to ASTM D 2996, with short-time rupture strength hoop tensile stress of 30,000 p.s.i. minimum.

Lin Engineering, Ltd.
Consulting Engineers
Chatham, Illinois

Designed By: DLS
Checked By: STD
Date: Feb 2009

Drawn By: A.J.F.
File: 002-0009.dgn

ILLINOIS DEPARTMENT OF TRANSPORTATION
SUPERSTRUCTURE DETAILS
OLD ILLINOIS ROUTE 3
OVER SEXTON CREEK
S.B.I. ROUTE 150 - SECTION (133A)D.I
ALEXANDER COUNTY
STATION 1212+84.95
STRUCTURE NO. 002-0009

...2009 revisions\002-0009.dgn

11:48:01 AM

3/1/2009