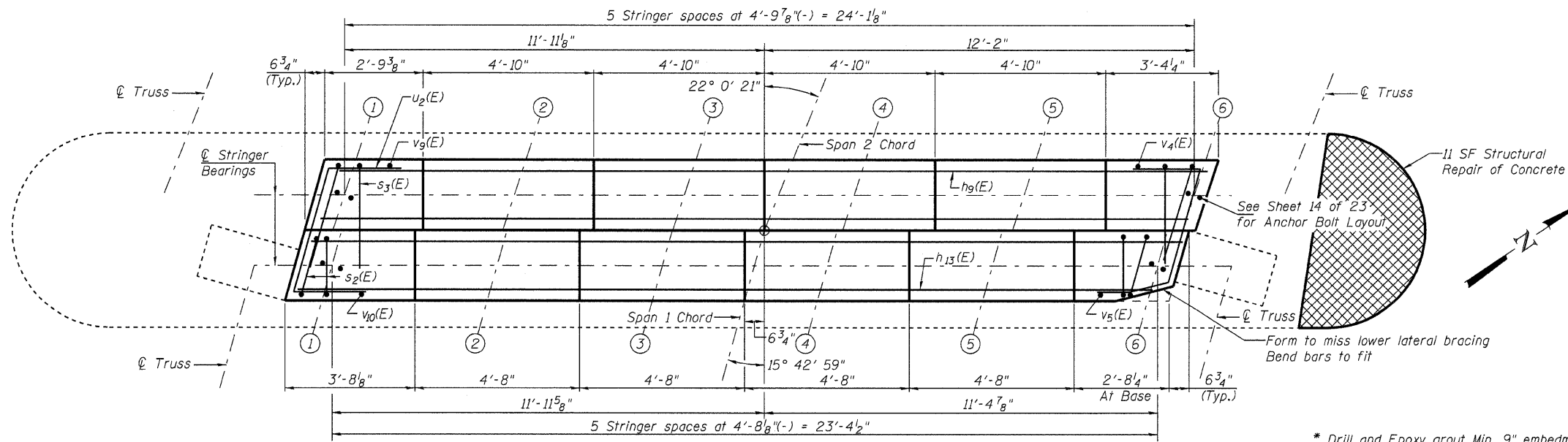
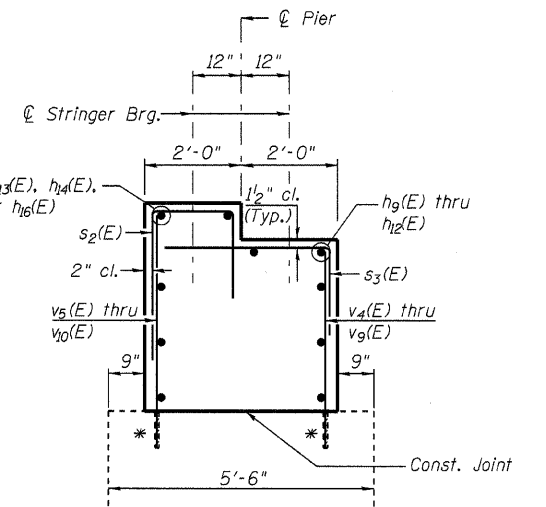


Contract #98910



PLAN



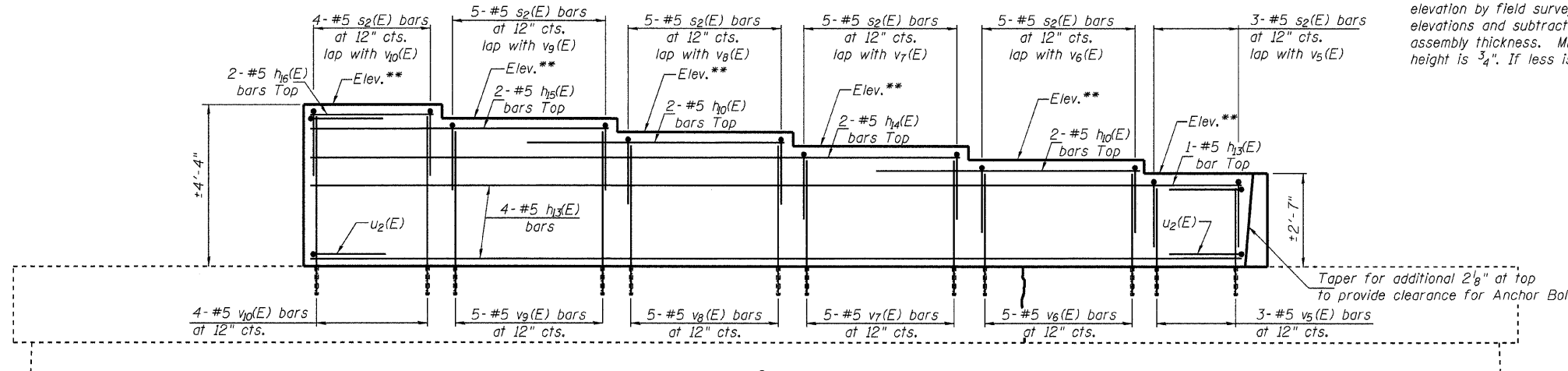
SECTION THRU PEDESTAL

(Dimensions at Rt. L's)
(Looking West)

BILL OF MATERIAL
(Pier 1)

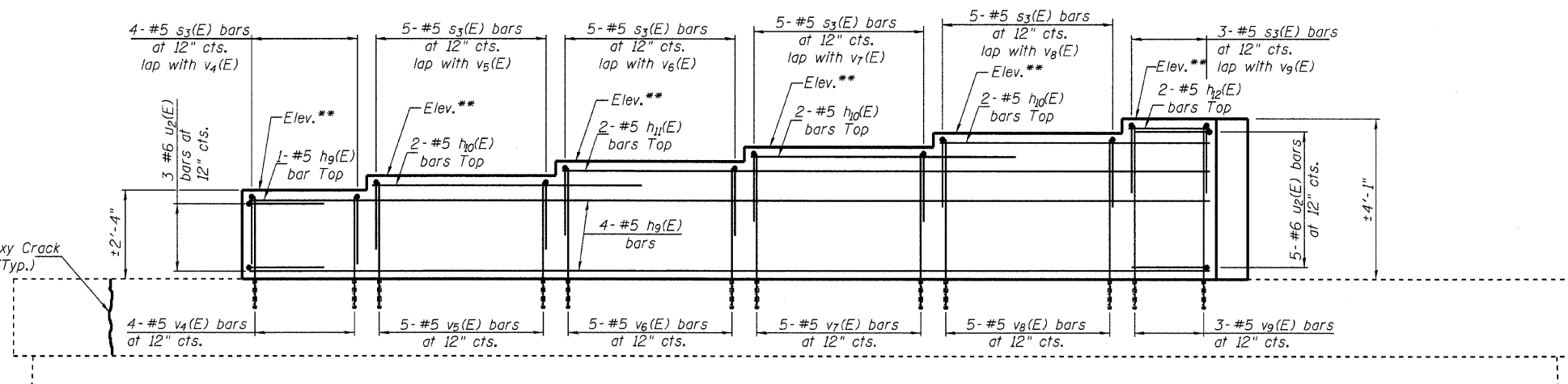
Bar	No.	Size	Length	Shape
h9(E)	5	#5	25'-2"	—
h10(E)	10	#5	7'-3"	—
h11(E)	2	#5	17'-0"	—
h12(E)	2	#5	3'-0"	—
h13(E)	5	#5	24'-11"	—
h14(E)	2	#5	17'-4"	—
h15(E)	2	#5	8'-0"	—
h16(E)	2	#5	3'-4"	—
s2(E)	27	#5	5'-1"	┌
s3(E)	27	#5	5'-7"	└
u2(E)	8	#6	9'-0"	┌
v4(E)	4	#5	2'-11"	—
v5(E)	8	#5	3'-3"	—
v6(E)	10	#5	3'-7"	—
v7(E)	10	#5	4'-0"	—
v8(E)	10	#5	4'-4"	—
v9(E)	8	#5	4'-8"	—
v10(E)	4	#5	4'-11"	—
Reinforcement Bars, Epoxy Coated		Pound	1070	
Concrete Structures		Cu. Yd.	12.5	
Concrete Sealer		Sq. Ft.	299	
Structural Repair of Concrete (Depth ≤ 5")		Sq. Ft.	11.0	
Epoxy Crack Injection		Foot	40	

The quantities shown for repair are for estimating purposes only. The area to be repaired will be determined by the Engineer at the time of construction.



ELEVATION-SOUTH HALF

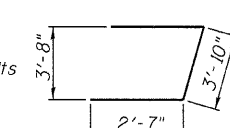
(Looking North)



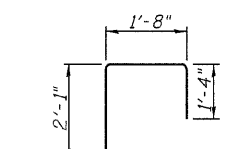
ELEVATION-NORTH HALF

(Looking South)

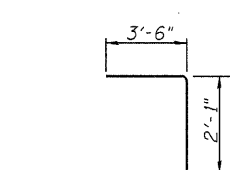
- * Drill and Epoxy grout Min. 9" embedment
- ** Contractor is to determine bearing seat elevation by field surveying the bottom of stringer elevations and subtracting the 2 1/4" bearing assembly thickness. Minimum allowable step height is 3/4". If less is required, consult Engineer.



BAR u2(E)



BAR s2(E)



BAR s3(E)

11-48:18 AM 3/11/2009 3:11/2009 revisions\002-0009.dgn

Notes:
Opposite side of pedestal not shown on elevation views for clarity.
Concrete Sealer shall be applied to all exposed faces of new concrete.
Space reinforcement bars to miss anchor bolts.
Four steps monolithically with cap.

Lin Engineering, Ltd.
Consulting Engineers
Chatham, Illinois

Designed By: DLS
Checked By: STD
Date: Feb 2009

Drawn By: A.J.F.
File: 002-0009.dgn

ILLINOIS DEPARTMENT OF TRANSPORTATION
PIER 1 PEDESTAL
OLD ILLINOIS ROUTE 3
OVER SEXTON CREEK
S.B.I. ROUTE 150 - SECTION (133A)D.I
ALEXANDER COUNTY
STATION 1212+84.95
STRUCTURE NO. 002-0009