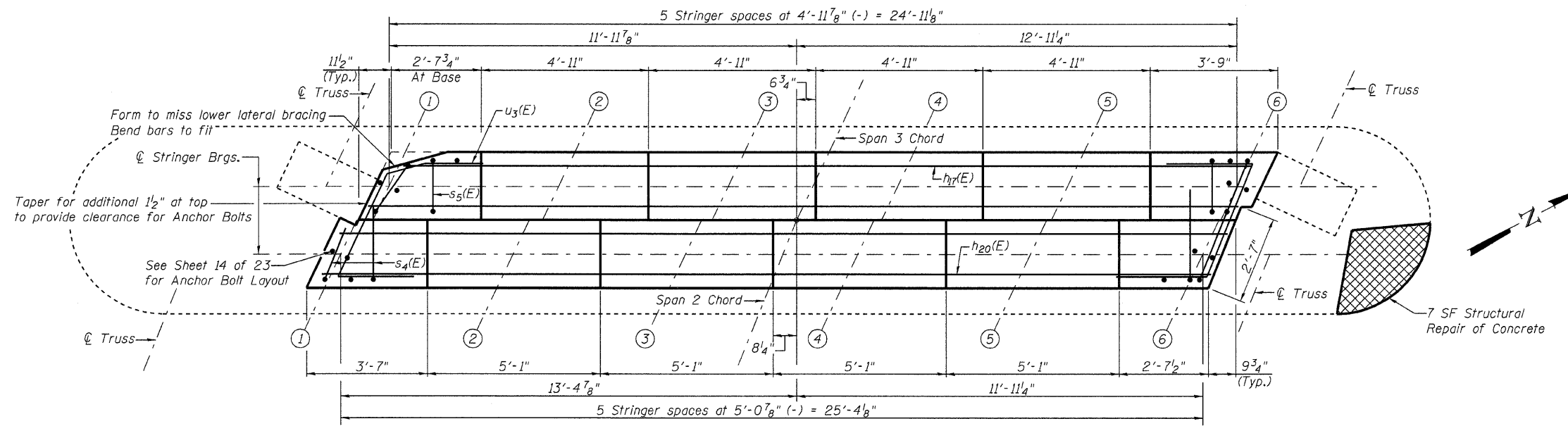
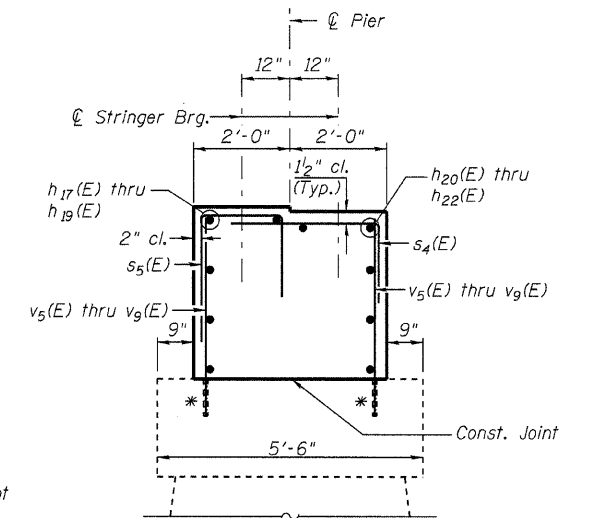
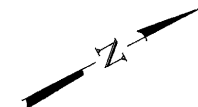


ROUTE NO.	SECTION	COUNTY	DATE	SHEET	SHEET NO. 22 23 SHEETS
S.B.I. 150	(133A) D.I	Alexander	3/2	30	
FED. ROAD DIST. NO. 7	ILLINOIS	FED. AID PROJECT-			

Contract #98910

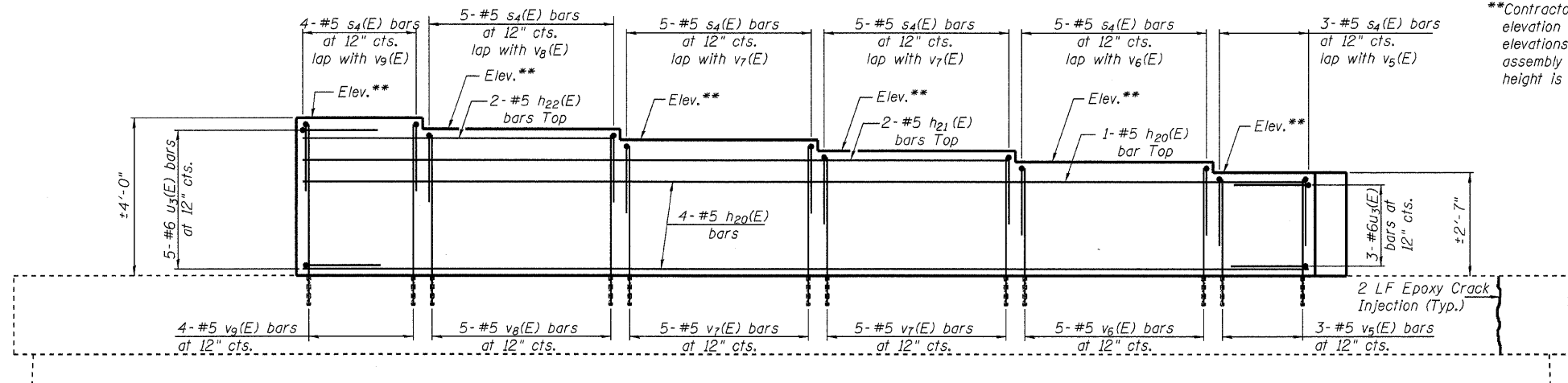


PLAN

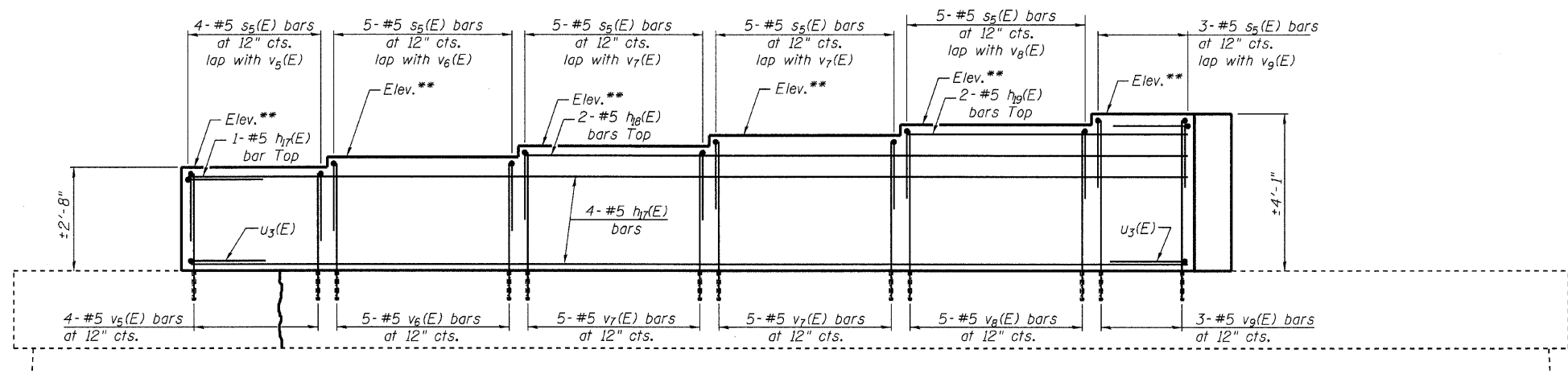


SECTION THRU PEDESTAL
(Dimensions at Rt. L's)
(Looking East)

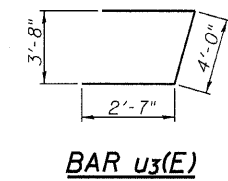
* Drill and Epoxy grout Min. 9" embedment
** Contractor is to determine bearing seat elevation by field surveying the bottom of stringer elevations and subtracting the 2 1/4" bearing assembly thickness. Minimum allowable step height is 3/4". If less is required, consult Engineer.



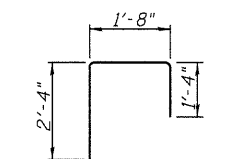
ELEVATION-SOUTH HALF
(Looking North)



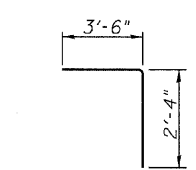
ELEVATION-NORTH HALF
(Looking South)



BAR u3(E)



BAR s5(E)



BAR s4(E)

BILL OF MATERIAL
(Pier 2)

Bar No.	Size	Length	Shape
h17(E)	#5	25'-8"	—
h18(E)	#5	17'-2"	—
h19(E)	#5	7'-2"	—
h20(E)	#5	26'-2"	—
h21(E)	#5	18'-6"	—
h22(E)	#5	8'-4"	—
s4(E)	#5	5'-10"	└
s5(E)	#5	5'-4"	└
u3(E)	#6	9'-2"	└
v5(E)	#5	3'-3"	—
v6(E)	#5	3'-7"	—
v7(E)	#5	4'-0"	—
v8(E)	#5	4'-4"	—
v9(E)	#5	4'-8"	—
Reinforcement Bars, Epoxy Coated	Pound	1030	
Concrete Structures	Cu. Yd.	13.0	
Concrete Sealer	Sq. Ft.	303	
Structural Repair of Concrete (Depth ≤ 5")	Sq. Ft.	7.0	
Epoxy Crack Injection	Foot	40	

The quantities shown for repair are for estimating purposes only. The area to be repaired will be determined by the Engineer at the time of construction.

11:48:21 AM 3/1/2009 ... \2009 revisions\002-0009.dgn

Notes:
Opposite side of pedestal not shown on elevation views for clarity.
Concrete Sealer shall be applied to all exposed faces of new concrete.
Space reinforcement bars to miss anchor bolts.
Four steps monolithically with cap.

Lin Engineering, Ltd.
Consulting Engineers
Chatham, Illinois

Designed By: DLS Checked By: STG Drawn By: A.J.F.
Date: Feb 2009 File: 002-0009.dgn

ILLINOIS DEPARTMENT OF TRANSPORTATION
PIER 2 PEDESTAL
OLD ILLINOIS ROUTE 3
OVER SEXTON CREEK
S.B.I. ROUTE 150 - SECTION (133A)D.I
ALEXANDER COUNTY
STATION 1212+84.95
STRUCTURE NO. 002-0009