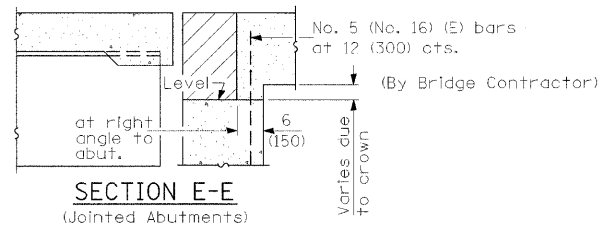
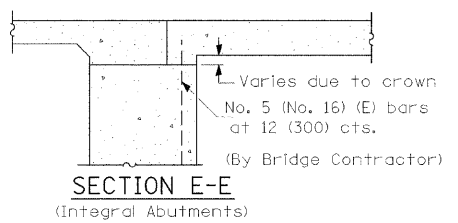
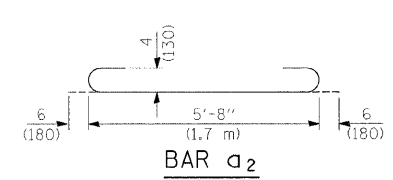
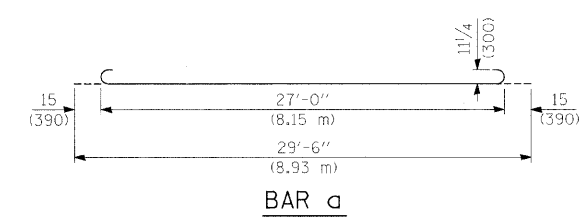


As approved by the Engineer, the Contractor may elect to reduce the widths of pour by use of the Optional Longitudinal Construction Joint shown. Joints shall be located at the edge of a traffic lane.



DESIGN STRESSES
 fy = 60,000 p.s.i. (400 MPa)
 f'c = 3,500 p.s.i. (24 MPa)
 n = 8.5

FILE NAME =	USER NAME = halsteadw	DESIGNED - ---	REVISED - ---	STATE OF ILLINOIS DEPARTMENT OF TRANSPORTATION	BRIDGE APPROACH PAVEMENT DETAIL OLD IL ROUTE 3 OVER SEXTON CREEK	S.B.I. RTE.	SECTION	COUNTY	TOTAL SHEETS	SHEET NO.	
C:\Documents and Settings\halsteadw\Local Settings\Temporary Internet Files\Content	DRAWN NOTB4EF3\0\bridge apprdgn	CHECKED - ---	REVISED - ---			150	(133A)D, I	ALEXANDER	32	32B	
PLOT SCALE = 1/2000' / IN.	DATE = 11/2008	REVISIONS				CONTRACT NO. 98910					
PLOT DATE = 4/29/2009						FED. ROAD DIST. NO. - ILLINOIS FED. AID PROJECT					
					SCALE: N.T.S.	SHEET NO. ___ OF ___ SHEETS		STA. TO STA.			