

STATE OF ILLINOIS
 DEPARTMENT OF TRANSPORTATION
 DIVISION OF HIGHWAYS
**PROPOSED
 HIGHWAY PLANS**

FAI 80 & FAI 55 (I-80 & I-55)
 SECTION: 2016-1 WEED SPRAY

GRUNDY COUNTY

F.A.I. RFE.	SECTION	COUNTY	TOTAL SHEETS	SHEET NO.
80/85	2016-1 WEED SPRAY	GRUNDY	8	1
		ILLINOIS	CONTRACT NO. 66E85	

- INDEX OF SHEETS
- 1 COVER SHEET
 - 2 GENERAL NOTES
 - 3 SUMMARY OF QUANTITIES
 - 4 SCHEDULE
 - 5-6 DETAILED LOCATION MAPS
 - 7-8 GPS TEASEL INFESTATION AREAS

LIST OF ILLINOIS DOT HIGHWAY STANDARDS

- 701101-04 OFF-ROAD OPERATIONS MULTILANE, 15' (4.5 m) TO 24" (600 mm) FROM PAVEMENT EDGE
- 701106-02 OFF-ROAD OPERATIONS, MULTILANE, MORE THAN 15' (4.5 m) AWAY
- 701426-07 LANE CLOSURE, MULTILANE INTERMITTENT OR MOVING OPERATION, FOR SPEEDS ≥ 45 MPH
- 701901-04 TRAFFIC CONTROL DEVICES

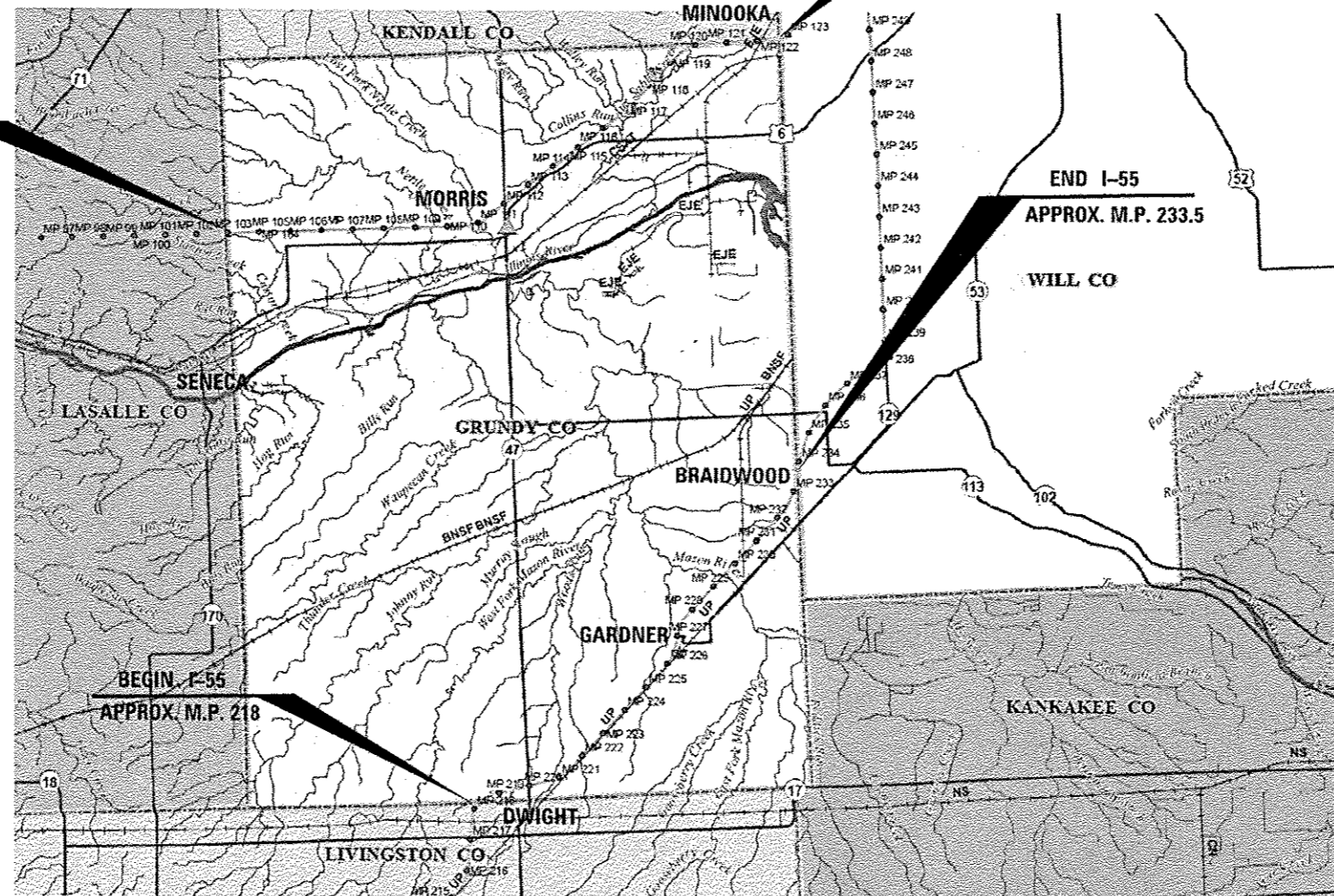
C-93-115-15

END I-80
 APPROX. M.P. 123

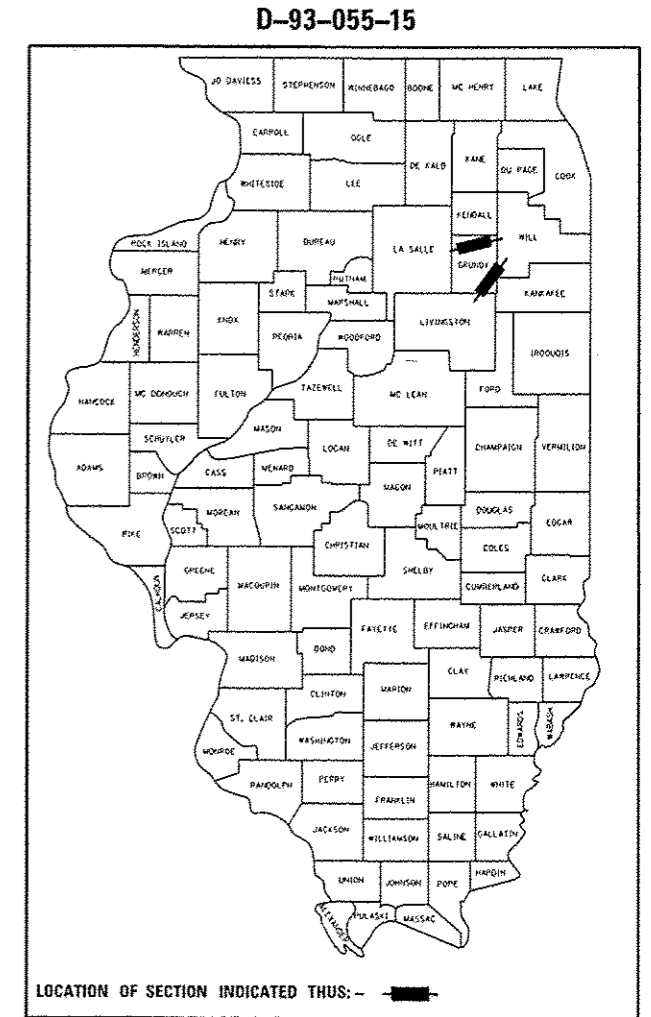
END I-55
 APPROX. M.P. 233.5

BEGIN I-80
 APPROX. M.P. 103

BEGIN I-55
 APPROX. M.P. 218

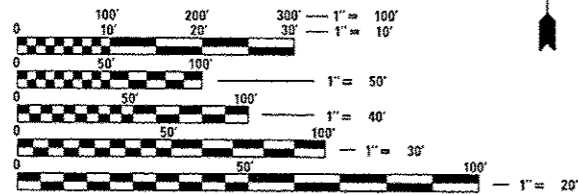


LOCATION MAP - NOT TO SCALE



FUNCTIONAL CLASSIFICATION:
 INTERSTATE

2013 I-80 ADT=35,500 SU=10.8% MU=28.7%
 2013 I-55 ADT=20,300 SU=14.5% MU=24.1%



FULL SIZE PLANS HAVE BEEN PREPARED USING STANDARD ENGINEERING SCALES. REDUCED SIZED PLANS WILL NOT CONFORM TO STANDARD SCALES. IN MAKING MEASUREMENTS ON REDUCED PLANS, THE ABOVE SCALES MAY BE USED.

J.U.L.I.E.
 JOINT UTILITY LOCATION INFORMATION FOR EXCAVATION
 1-800-892-0123
 OR 811

DISTRICT 3 (815) 434-6131
 PROJECT ENGINEER: JOE KANNEL, P.E.
 UNIT CHIEF: DUANE LUKKARI, P.E.
 TOWNSHIPS: VARIOUS
 CONTRACT NO. 66E85

STATE OF ILLINOIS
 DEPARTMENT OF TRANSPORTATION
 DIVISION OF HIGHWAYS

SUBMITTED May 19 2015
Paul Coates
 DEPUTY DIRECTOR OF HIGHWAYS, REGION ENGINEER

July 26 2015
John D. Baranzelli, P.E.
 ENGINEER OF DESIGN AND ENVIRONMENT

June 26 2015
Omer Osman, P.E.
 DIRECTOR OF HIGHWAYS, CHIEF ENGINEER

PRINTED BY THE AUTHORITY
 OF THE STATE OF ILLINOIS

GENERAL NOTES

ANY REFERENCE TO A STANDARD IN THESE PLANS SHALL BE INTERPRETED TO MEAN THE EDITION AS INDICATED BY THE SUBNUMBER SHOWN IN THE LIST OF STANDARDS OR THE COPY INCLUDED IN THESE PLANS.

THE FOLLOWING RATES OF APPLICATION HAVE BEEN USED IN CALCULATING PLAN QUANTITIES:

DMA 4	32	OUNCES / ACRE
TRANSLINE	14	OUNCES / ACRE
IMPROVED SURFACTANT	2	PINT / 100 GALLONS OF WATER
WATER	25	GALLONS MINIMUM / ACRE

COMMITMENTS: NONE

STATE OF ILLINOIS
DEPARTMENT OF TRANSPORTATION
DISTRICT THREE

PREPARED BY: Tom Beaulieu
DISTRICT STUDIES & PLANS ENGINEER

DATE: May 19, 2015

EXAMINED BY: [Signature]
DISTRICT CONSTRUCTION ENGINEER

[Signature]
DISTRICT MATERIALS ENGINEER

[Signature]
DISTRICT OPERATIONS ENGINEER

FILE NAME *	USER NAME * Schwankeng	DESIGNED -	REVISED -	STATE OF ILLINOIS DEPARTMENT OF TRANSPORTATION	GENERAL NOTES	F.A.I. RTE.	SECTION	COUNTY	TOTAL SHEETS	SHEET NO.	
path \\11.004EBID\ITC\Illinois.gov\PI\007\00	uments\DOT Offices\District 3\Projects\0366	DRAWN	REVISED			80/55	2016-1 WEED SPRAY	CRUNDY	8	2	
	PLOT SCALE = 100.0000' / 1"	CHECKED -	REVISED -			SCALE: SHEET OF SHEETS STA. TO STA.					
	PLOT DATE = 5/19/2015	DATE -	REVISED -			ILLINOIS NON FED. AID PROJECT CONTRACT NO. 66E85					

8/10/2015

SUMMARY OF QUANTITIES				CONSTRUCTION CODE	
				I-55 100% STATE ROADWAY	I-80 100% STATE ROADWAY
CODE NO.	ITEM	UNIT	TOTAL QUANTITY	0031 RURAL	0031 URBAN
67100100	MOBILIZATION	LSUM	1	0.5	0.5
K0029618	WEED CONTROL, BROADLEAF IN TURF	GALLON	439.1	262.6	176.5

2

WEED SPRAYING ON I-80 & I-55 IN GRUNDY COUNTY

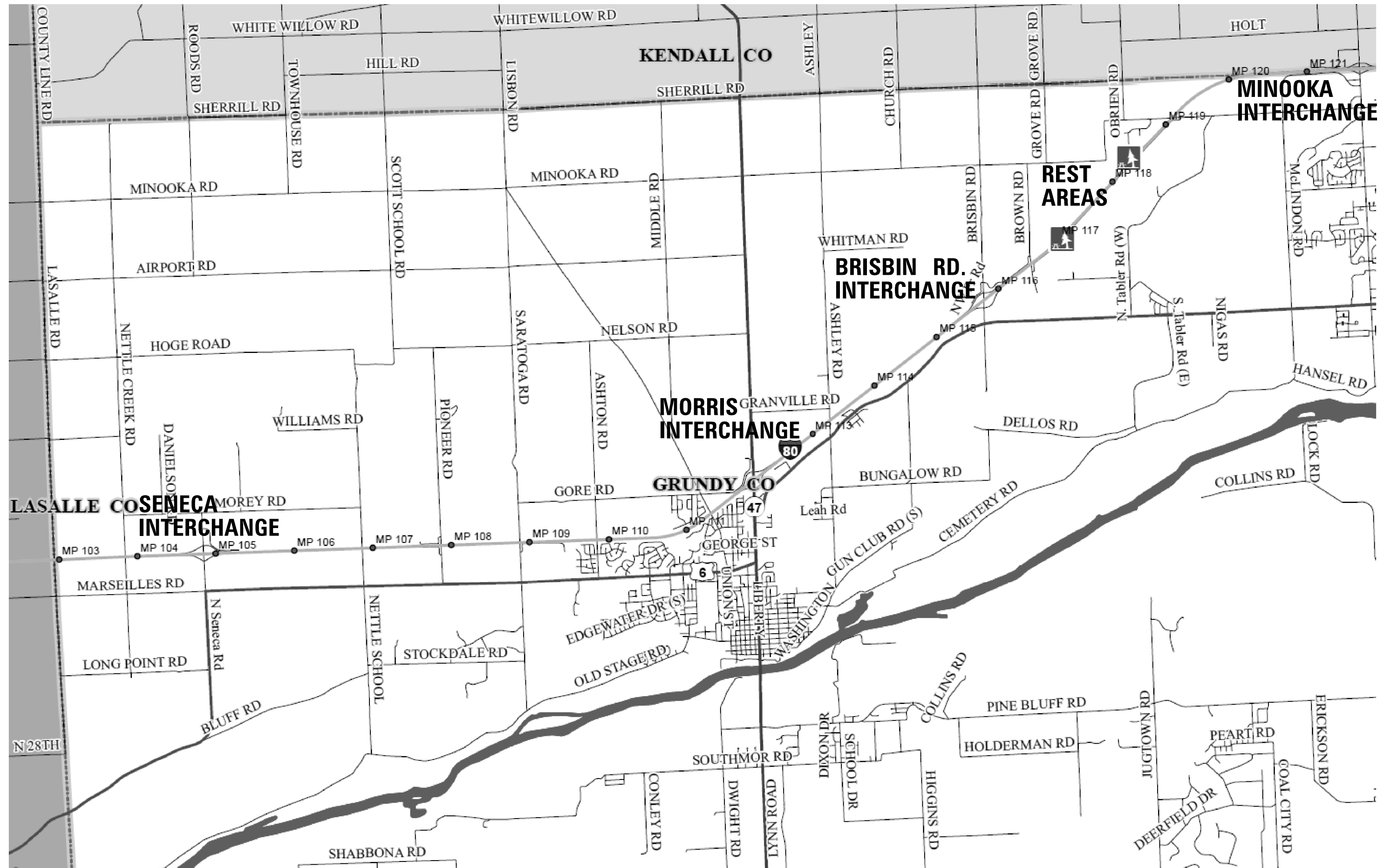
ROUTE	LOCATION	MILES	AREA	URBAN	URBAN	RURAL	RURAL
			ACRES	TRANSLINE	DMA 4	TRANSLINE	DMA 4
				GALLONS	GALLONS	GALLONS	GALLONS
I-80	M.P. 102.9 TO 108.4	5.50	53			5.83	13.33
I-80	SENECA INTERCHANGE	-	20			2.19	5.00
I-80	M.P. 108.4 TO 114.4	6.00	58	6.36	14.55		
I-80	MORRIS INTERCHANGE (IL 47)	-	30	3.28	7.50		
I-80	M.P. 114.4 TO 115.6	1.20	12			1.27	2.91
I-80	BRISBIN ROAD INTERCHANGE	-	20			2.19	5.00
I-80	M.P. 115.6 TO 122.7	7.10	69	7.53	17.21		
I-80	EB & WB REST AREA ENTRANCE & EXIT RAMPS	-	14	1.53	3.50		
I-80	MINOOKA INTERCHANGE	-	18	1.97	4.50		
I-80 TOTALS		19.8	294	20.7	47.3	11.5	26.2
I-55	M.P. 218.2 TO M.P. 230.6	12.40	216			23.67	54.11
I-55	DWIGHT INTERCHANGE (IL 47)	-	24			2.63	6.00
I-55	GARDNER INTERCHANGE	-	20			2.19	5.00
I-55	M.P. 230.6 TO M.P. 233.5	2.90	37	4.00	9.14		
I-55	BRAIDWOOD INTERCHANGE	-	20	2.19	5.00		
I-55 TOTALS		15.3	317	6.2	14.1	28.5	65.1
I-80 & I-55 TOTALS (ONE APPLICATION)		35.1	611	26.9	61.4	40.0	91.4
I-80 & I-55 PROJECT TOTALS (TWO APPLICATIONS)		70.2	1222	53.7	122.8	79.9	182.7

APPLICATION RATES:

TRANSLINE = 14 OUNCES / ACRE

DMA 4 = 32 OUNCES / ACRE

NON-IONIC SURFACTANT = 2 PINTS / 100 GALLONS WATER



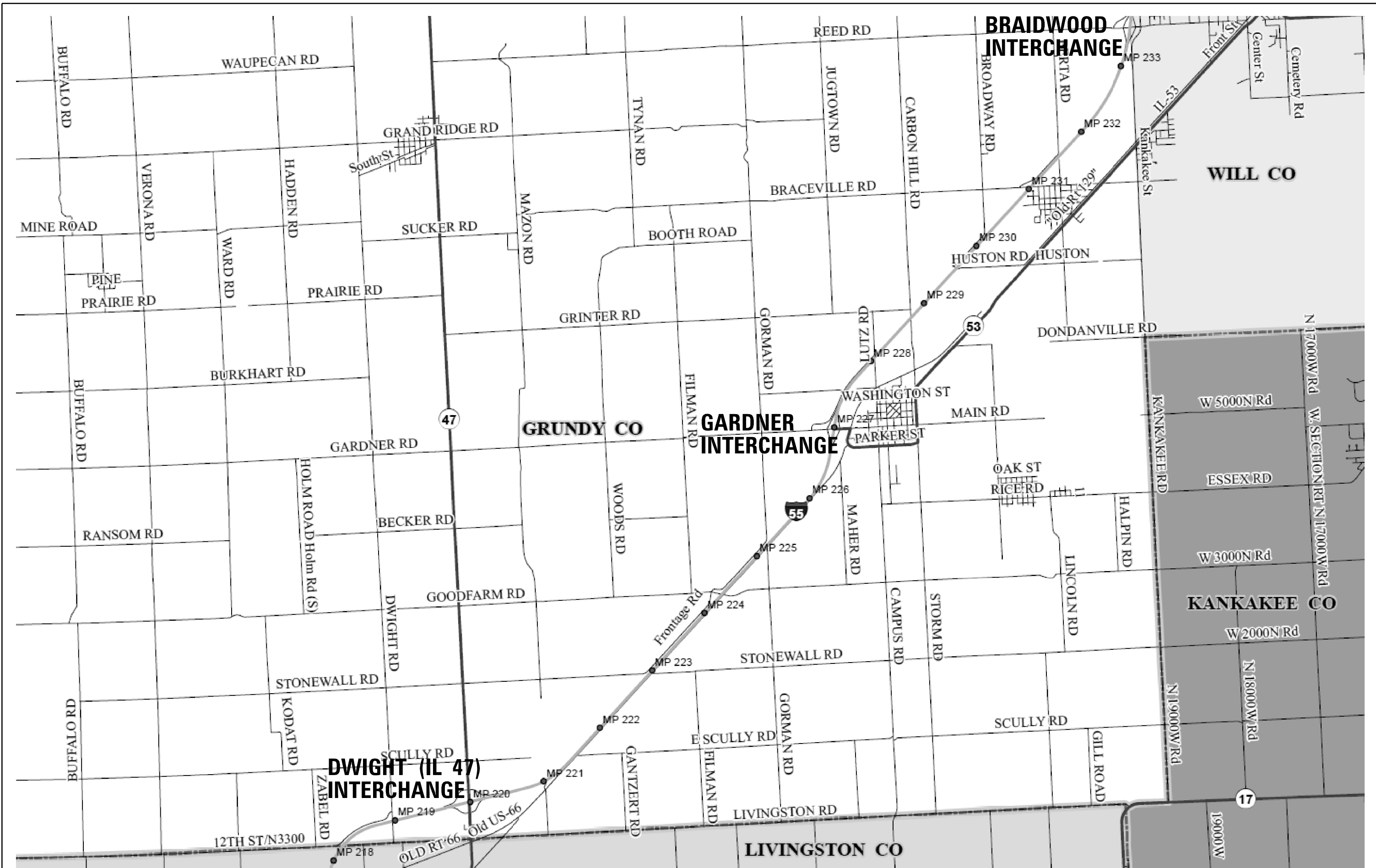
FILE NAME =	USER NAME = lukkaridp	DESIGNED -	REVISED -
pw\N\084EBID\INTEG\illinois.gov\PW1001\Documents\1001 Offices\District 3\Projects\036685\BROWN\Drawings\EA0\Drawings\036685-shr-deta		REVISION	REVISION
	PLOT SCALE = 99.9800' / in.	CHECKED -	REVISED -
	PLOT DATE = 5/18/2015	DATE -	REVISED -

**STATE OF ILLINOIS
DEPARTMENT OF TRANSPORTATION**

DETAILED LOCATION MAP FOR I-80

SCALE: SHEET NO. OF SHEETS STA. TO STA.

F.A.I. R.E.	SECTION	COUNTY	TOTAL SHEETS	SHEET NO.
80/55	2016-1 WEED SPRAY	GRUNDY	8	5
		CONTRACT NO. 66E85		
ILLINOIS FED. AID PROJECT				



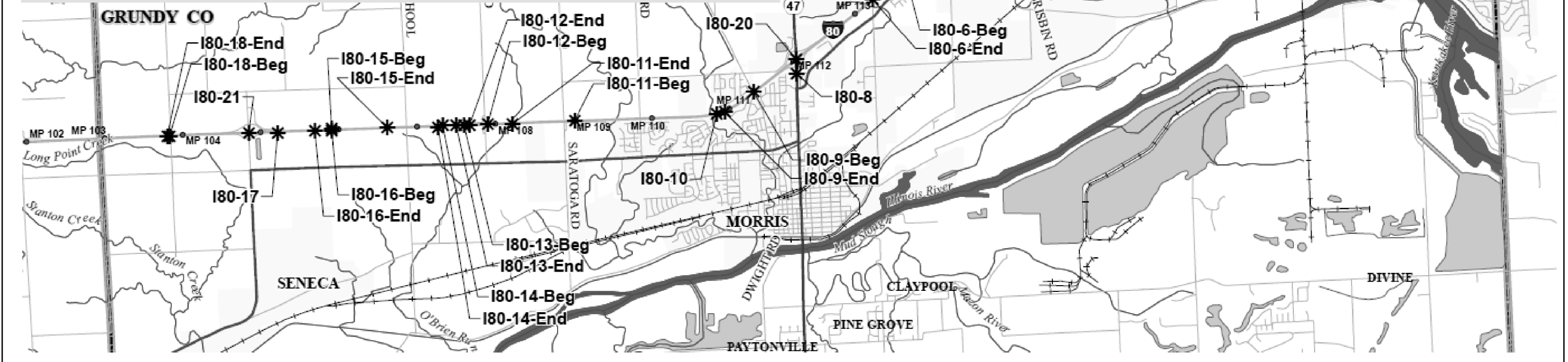
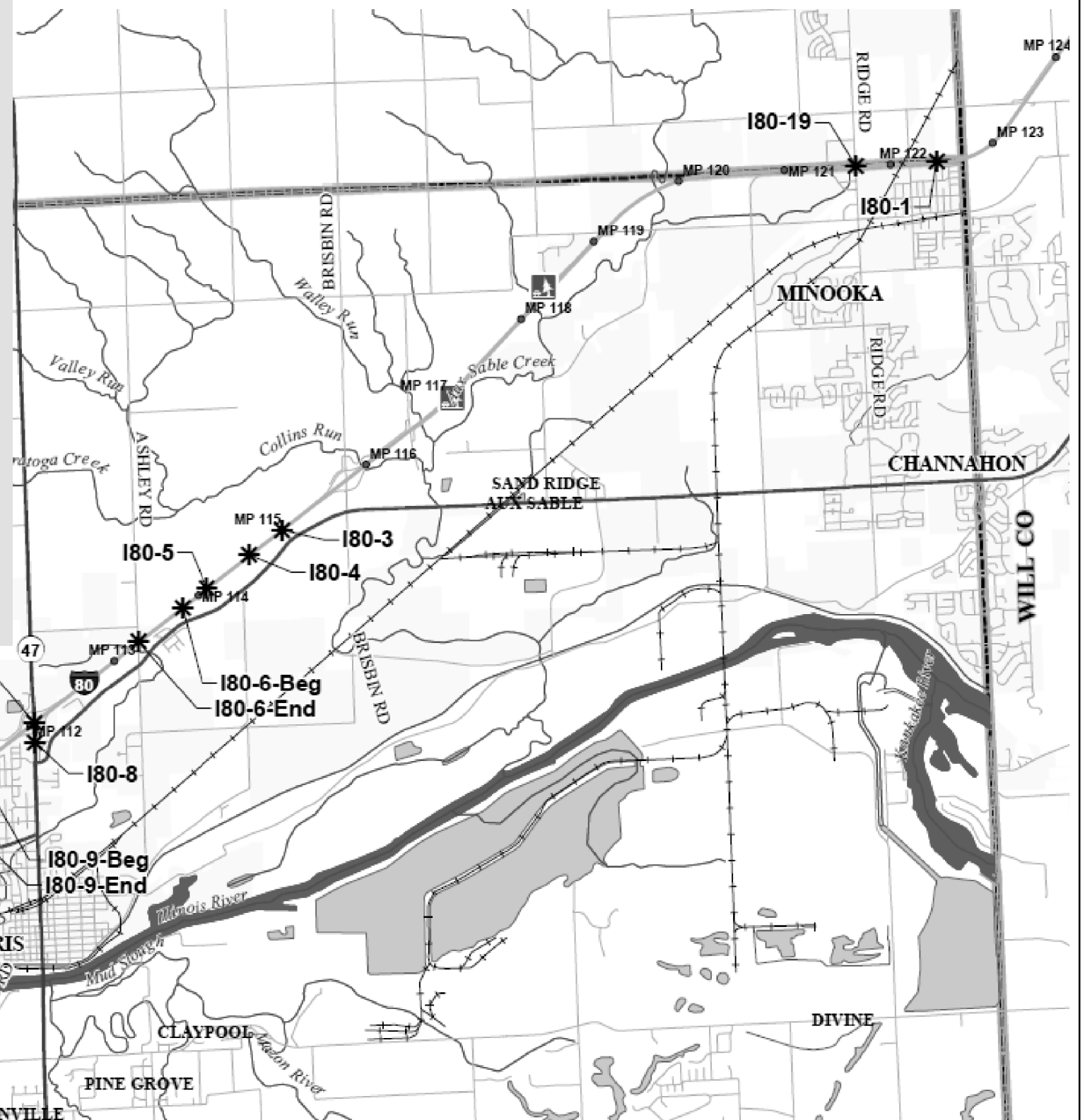
FILE NAME -	USER NAME - lukkaridp	DESIGNED -	REVISED -
pww\11084EBIDINTEG\illinois.gov\PIWIDOT\Documents\100T_Offices\District_3\Projects\036666\BRAND\Drawings\6AD\Sheets\036666-5ht-detailed		CHECKED -	REVISED -
		DATE -	REVISED -

**STATE OF ILLINOIS
DEPARTMENT OF TRANSPORTATION**

DETAILED LOCATION MAP FOR I-55			
SCALE:	SHEET NO. OF SHEETS	STA.	TO STA.

F.A.I. RTE. 80/55	SECTION 2016-1 WEED SPRAY	COUNTY GRUNDY	TOTAL SHEETS 8	SHEET NO. 6
			CONTRACT NO. 66E85	
ILLINOIS FED. AID PROJECT				

Pt No	Latitude	Longitude	Description
I80-1	41.462778	-88.256944	
I80-3	41.401389	-88.377222	MM115
I80-4	41.411111	-88.382778	Median
I80-5	41.406667	-88.390556	Median and ROW
I80-6-Beg	41.404132	-88.395019	Start
I80-6-End	41.399573	-88.403122	Stop
I80-8	41.386111	-88.422222	Rt. 47 Just s. of the interchange W. side of road (Big R)
I80-9-Beg	41.382778	-88.432778	Start ROW and Median
I80-9-End	41.379167	-88.44	Stop
I80-10	41.378889	-88.441944	EB ROW and Median
I80-11-Beg	41.378056	-88.476944	Start ROW and Median
I80-11-End	41.377778	-88.492222	Stop
I80-12-Beg	41.377778	-88.498333	Start ROW and Median
I80-12-End	41.377778	-88.502778	Stop
I80-13-Beg	41.377778	-88.504167	
I80-13-End	41.377778	-88.506111	Stop
I80-14-Beg	41.377778	-88.509444	Start
I80-14-End	41.3775	-88.510556	Stop
I80-15-Beg	41.3775	-88.536667	Start
I80-15-End	41.3775	-88.523056	Stop
I80-16-Beg	41.377222	-88.536667	Start
I80-16-End	41.377222	-88.540833	Stop
I80-17	41.376944	-88.55	
I80-18-Beg	41.376667	-88.576667	Start
I80-18-End	41.376667	-88.577222	Stop



Pt No	Latitude	Longitude	Description
I55-1	41.113889	-88.431667	MM 219 Bridge cone and ROW Fence
I55-2	41.114722	-88.428333	
I55-3	41.115556	-88.422778	
I55-5	41.118333	-88.406667	
I55-6	41.123611	-88.373056	
I55-7	41.125	-88.388056	
I55-8	41.126389	-88.386111	Median
I55-9	41.129722	-88.381944	
I55-10	41.136389	-88.373889	
I55-11	41.13833	-88.371389	
I55-12	41.139167	-88.370278	
I55-13-Beg	41.14	-88.368889	Start
I55-13-End	41.154444	-88.35111	Stop

