

07-31-2015 LETTING ITEM 083

STATE OF ILLINOIS
DEPARTMENT OF TRANSPORTATION
DIVISION OF HIGHWAYS

PLANS FOR PROPOSED
VARIOUS ROUTES
VILLAGE OF SHILOH
SHILOH SAFE ROUTES TO SCHOOL
SECTION 10-00012-00-BT
PROJECT NO. SRTS 4009 (267)
JOB NO. C-98-312-14
ST. CLAIR COUNTY, IL

F.A.U. RTE.	SECTION	COUNTY	TOTAL SHEETS	SHEET NO.
	10-00012-00-BT	ST. CLAIR	19	01
FEDERAL AID PROJECT			CONTRACT NO. 87540	

INDEX OF SHEETS

01	COVER SHEET
02	GENERAL NOTES & UTILITIES
03	SUMMARY OF QUANTITIES
04	TYPICAL SECTIONS
05	SCHEDULES
06-09	PLAN AND PROFILE
10-11	DETAILS
12-19	CROSS SECTIONS

STANDARDS

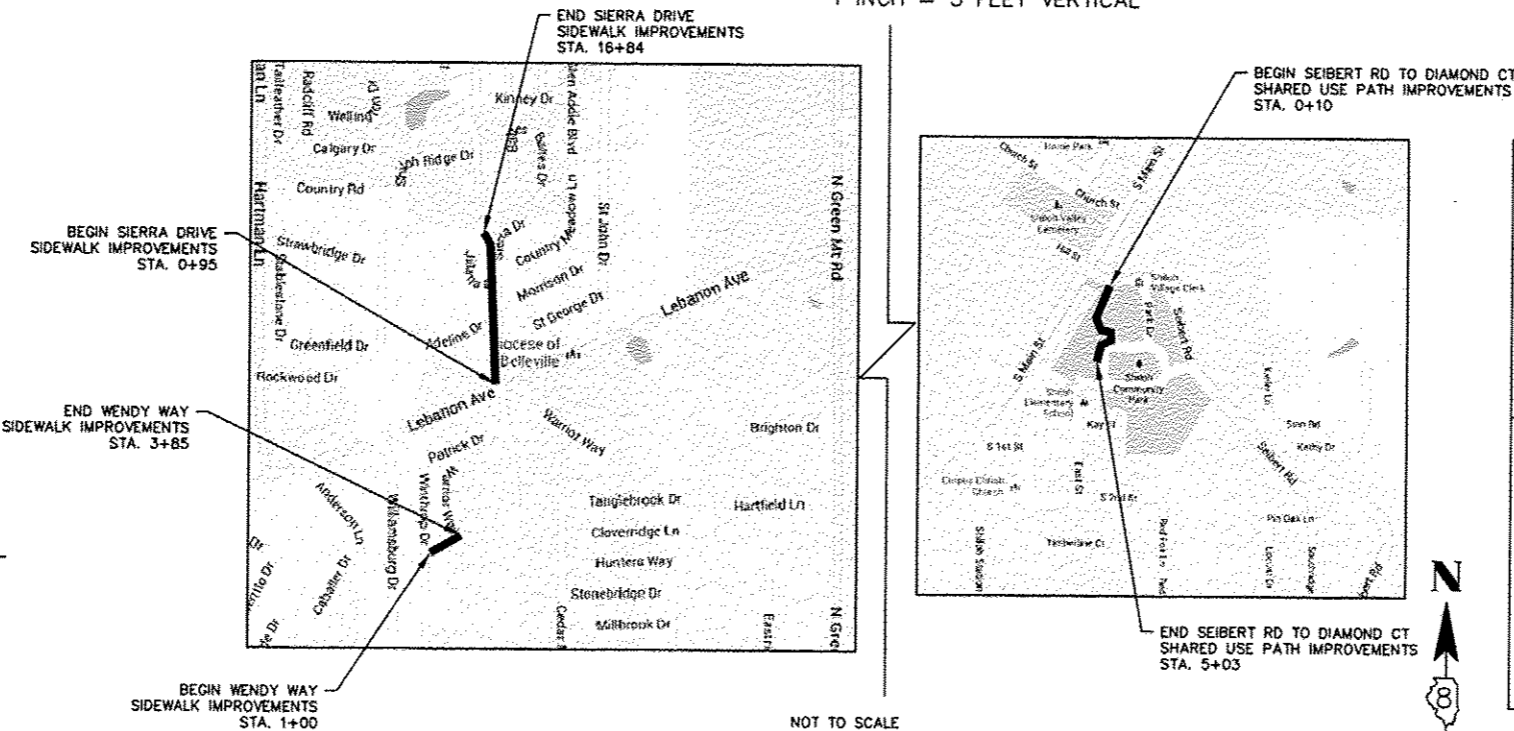
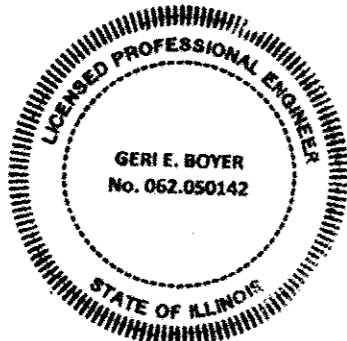
000001-06
001006
424001-08
442201-03
542301-03
606001-06
664001-02
701006-05
701301-04
701801-05
701901-04
720001-01
720006-04
728001-01
780001-05



SCALES:

PLAN & PROFILE 1 INCH = 20 FEET
1 INCH = 5 FEET VERTICAL

CROSS SECTIONS 1 INCH = 10 FEET HORIZONTAL
1 INCH = 5 FEET VERTICAL



Geri E. Boyer
GERI E. BOYER
LICENSE NO. 062-050142
DATE 4/29/15
EXPIRES: 11-30-2015

GRAPHIC SCALES TO BE USED ARE SHOWN ACCORDINGLY ON EACH PLAN SHEET

(J.U.L.I.E.)
JOINT UTILITY LOCATION INFORMATION FOR
EXCAVATION 1-800-892-0123

FUNCTIONAL CLASSIFICATION

LEBANON AVE: ARTERIAL
SIERRA DR: LOCAL ROAD
WARRIOR WAY: LOCAL ROAD
WENDY WAY: LOCAL ROAD
SEIBERT RD: COLLECTOR

CURRENT YEAR (2013) ADT

LEBANON AVE: 13,300
SIERRA DRIVE: 3,550
WARRIOR WAY: 950
WENDY WAY: 50
SEIBERT RD: 3,650

LENGTH OF PROJECT

NET LENGTH -SIERRA DR SIDEWALK = 1,589' (0.30 MILES)
WARRIOR WAY TO WENDY WAY SIDEWALK = 285' (0.05 MILES)
SHARED USE PATH SEIBERT DR TO DIAMOND CT = 493' (0.09 MILES)
DIAMOND CT SIDEWALK = 150' (0.03 MILES)
TOTAL NET LENGTH = 2517' (0.47 MILES)

DESIGN SPEED
LEBANON AVE: 45 MPH
SIERRA DR: 30 MPH

STATE OF ILLINOIS
DEPARTMENT OF TRANSPORTATION
DIVISION OF HIGHWAYS

APPROVED _____ 20____
John G. Clark
VILLAGE OF SHILOH, MAYOR

PASSED _____ 20____
June 4 2015
DISTRICT 8 ENGINEER OF LOCAL ROADS & STREETS

RELEASING FOR BID
BASED ON LIMITED
REVIEW _____ 20____
June 4 2015
DEPUTY DIRECTOR OF HIGHWAYS, REGION 5 ENGINEER

PRINTED BY AUTHORITY OF THE STATE OF ILLINOIS

208 East Main Street, Suite 100
Belleville, Illinois 62220
618.233.5877 phone
618.233.5977 fax
www.kaskaskiaeng.com

PROFESSIONAL REGISTRATIONS
Illinois Professional Design Firm
Professional Engineering Group

LICENSE NO.
184.004773
20-5080586

GENERAL NOTES

1. THE ENGINEER AND OWNER DO NOT WARRANT THAT ALL UTILITIES HAVE BEEN ILLUSTRATED ON THESE DOCUMENTS. THE CONTRACTOR IS SOLELY RESPONSIBLE FOR CONTACTING J.U.L.I.E. FOR FIELD VERIFICATION OF ALL UTILITIES ON THE SITE PRIOR TO COMMENCEMENT OF CONSTRUCTION. IF CONTRACTOR DETERMINES THAT CONFIRMED OR DISCOVERED UTILITIES LOCATED WOULD SIGNIFICANTLY AFFECT THE FUNCTION, COST, OR PERFORMANCE OF THE PROJECT, THE CONTRACTOR SHALL IMMEDIATELY CONTACT THE ENGINEER FOR CLARIFICATION AND PROJECT DIRECTION.
2. IT IS NOT WARRANTED THAT THESE DRAWINGS CONTAIN COMPLETE INFORMATION REGARDING EASEMENTS, RESERVATIONS, RESTRICTIONS, RIGHT-OF-WAYS, BUILDING LINE SETBACKS, AND OTHER ENCUMBRANCES. FOR COMPLETE INFORMATION, A TITLE OPINION OR COMMITMENT FOR TITLE INSURANCE SHOULD BE OBTAINED AND THOROUGHLY REVIEWED.
3. ALL WORK, INSTALLATION, PROCEDURES, MATERIALS, AND TESTING ASSOCIATED WITH THIS PROJECT SHALL CONFORM TO THE IDOT STANDARD SPECIFICATIONS FOR ROAD AND BRIDGE CONSTRUCTION, (ADOPTED JANUARY 1, 2012); AND THE SUPPLEMENTAL SPECIFICATIONS AND RECURRING SPECIAL PROVISIONS LATEST EDITION (BOTH OF WHICH WILL BE HEREINAFTER REFERRED TO IN THESE DOCUMENTS AS THE STANDARD SPECIFICATIONS (HIGHWAY)).
4. ALL WORK, INSTALLED, PROCEDURES, MATERIALS, AND TESTING ASSOCIATED WITH THIS PROJECT SHALL CONFORM TO THE ILLINOIS NRCSS ILLINOIS URBAN MANUAL, 2010 EDITION, WHICH WILL BE HEREINAFTER REFEREED TO IN THESE DOCUMENTS AS THE STANDARD SPECIFICATIONS (EROSION).
5. ALL WORK, INSTALLATION, PROCEDURES, AND MATERIALS ASSOCIATED WITH THIS PROJECT SHALL CONFORM TO THE UNITED STATES AMERICANS WITH DISABILITIES ACT.
6. ALL WORK, INSTALLATION, PROCEDURES, MATERIALS, TESTING, AND INSPECTION SHALL CONFORM TO THE STATE, MUNICIPAL, AND LOCAL UNITS OF GOVERNMENT HAVING JURISDICTION OVER THIS PROJECT.
7. ALL WORK, INSTALLATION, PROCEDURES, MATERIALS, TESTING, ETC., FOR EROSION AND SEDIMENTATION CONTROL SHALL CONFORM TO THE STANDARD SPECIFICATIONS (EROSION).
8. IT IS THE CONTRACTOR'S RESPONSIBILITY TO ENSURE THAT ALL EROSION AND DISPLACED SEDIMENT DOES NOT MIGRATE OFF SITE. IF UNEXPECTED EROSION OR SEDIMENTATION OCCURS, OR IF THE EROSION PLAN STRUCTURES BECOME DAMAGED, THE CONTRACTOR SHALL PROVIDE SUFFICIENT MEASURES TO REPAIR, REPLACE, OR INSTALL EROSION CONTROL STRUCTURES TO ENSURE OFF-SITE DAMAGE DOES NOT OCCUR. ANY SEDIMENT OR EROSION DAMAGE WHICH OCCURS OFF-SITE SHALL BE REPAIRED BY THE CONTRACTOR AT HIS EXPENSE. THIS WORK SHALL BE INCLUDED IN THE CONTRACT PRICE AND NO ADDITIONAL COMPENSATION WILL BE ALLOWED.
9. DURING CONSTRUCTION, THE CONTRACTOR SHALL TAKE PRECAUTION TO ENSURE THAT SEDIMENTATION DAMAGE WILL NOT OCCUR. THE CONTRACTOR SHALL RESTRICT THE AMOUNT OF LAND AREA GRADED AT ANY ONE TIME TO A MINIMUM. IT IS RECOMMENDED DURING AND AFTER GRADING, THAT A TEMPORARY VEGETATIVE COVER BE ESTABLISHED TO PROTECT THE BARE SOIL SURFACE. THIS WORK SHALL BE INCLUDED IN THE CONTRACT PRICE AND NO ADDITIONAL COMPENSATION WILL BE ALLOWED.
10. ALL EROSION CONTROL AND SEDIMENTATION CONTROL MEASURES SHALL BE THE RESPONSIBILITY OF THE CONTRACTOR TO INSTALL AND MAINTAIN. THE MAINTENANCE OF THESE EROSION CONTROL AND SEDIMENTATION CONTROL MEASURES SHALL BE CONSIDERED INCIDENTAL TO THE DEVICES THEMSELVES. MAINTENANCE SHALL CONTINUE TO BE THE RESPONSIBILITY OF THE CONTRACTOR UNTIL THE OWNER TAKES OWNERSHIP OF THE IMPROVEMENTS. AN NPDES PERMIT IS NOT REQUIRED. THIS WORK SHALL BE INCLUDED IN THE CONTRACT PRICE AND NO ADDITIONAL COMPENSATION WILL BE ALLOWED.
11. THE FOLLOWING ITEM AND APPROXIMATE QUANTITY ARE INCLUDED IN THE "SCHEDULE OF PRICES" IN ORDER TO ESTABLISH A UNIT COST FOR WORK WHICH MAY BE REQUIRED TO CONSTRUCT THIS SECTION. THE ACTUAL QUANTITY OF EACH ITEM SHALL BE DETERMINED BY THE ENGINEER IN THE FIELD.

AGGREGATE FOR TEMPORARY ACCESS 143 TON

12. THE CONTRACTOR SHALL RELOCATE ALL MAILBOXES AND TRAFFIC SIGNS IN ACCORDANCE WITH ARTICLES 107.20 AND 107.25 AND AS DIRECTED BY THE ENGINEER. THIS WORK SHALL BE CONSIDERED AS INCLUDED IN THE COST OF THE PROJECT AND ANY DAMAGE SHALL BE THE CONTRACTOR'S RESPONSIBILITY. IN ALL LOCATIONS A 3 FOOT MINIMUM ACCESSIBLE PATH IS REQUIRED ADJACENT TO TRAFFIC SIGNS OR MAILBOXES.
13. THE FOLLOWING UTILITY COMPANIES MAY HAVE FACILITIES LOCATED WITHIN THE LIMITS OF CONSTRUCTION WHICH MAY REQUIRE ADJUSTMENT, RELOCATION OR REMOVAL. ALL ARE MEMBERS OF J.U.L.I.E. UNLESS NOTES NOTHERWISE.

CITY OF BELLEVILLE (SEWER)
450 ENVIRONMENTAL DRIVE
BELLEVILLE, ILLINOIS
(618) 233-7146

ILLINOIS AMERICAN WATER (WATER)
100 N. WATERWORKS DRIVE
BELLEVILLE, ILLINOIS
(618) 277-7450

AT&T
317 WEST MAIN ST.
BELLEVILLE, ILLINOIS 62220
(618) 277-2268

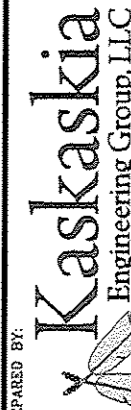
CHARTER COMMUNICATIONS
314 WEST MAIN STREET
BELLEVILLE, ILLINOIS
(618) 277-0760

AMEREN IP (GAS & ELECTRIC)
1050 WEST BLVD
BELLEVILLE, ILLINOIS
(800) 755-5000

COMMITMENTS

NONE

208 East Main Street, Suite 100
Belleville, Illinois 62220
618.233.8877 phone
618.233.5977 fax
www.kaskaskiaeng.com



LICENSE NO.
184-004773
20-5080586

PROFESSIONAL REGISTRATIONS
Illinois Professional Design Firm
Professional Engineering Group

PREPARED BY:

CONTRACT NO. 97540
SEC. NO. 10-00012-00-BT

REV.	DATE	DESCRIP
△		
△		
△		
△		
△		

SHEET TITLE:
GENERAL NOTES & UTILITIES

PROJECT TITLE:
SHILOH SAFE ROUTES TO SCHOOL
VILLAGE OF SHILOH
ST. CLAIR COUNTY, IL

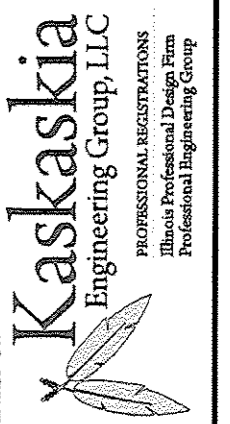
DESIGNED BY: SMS	SHEET
DRAWN BY: JLT	02
CHECKED BY: DWK	
DATE OF PRELIMINARY: 7/24/2013	
DATE OF FINAL: 4/24/2015	
SHEET NO. 02 OF 12 SHEETS	
PROJECT NUMBER 02-0011.01	

SUMMARY OF QUANTITIES

CODE NO.	ITEM	UNIT	TOTAL QUANTITIES
20200100	EARTH EXCAVATION	CU YD	245
20800150	TRENCH BACKFILL	CU YD	2
25000110	SEEDING, CLASS 1A	ACRE	0.25
25000400	NITROGEN FERTILIZER NUTRIENT	POUND	19
25000500	PHOSPHORUS FERTILIZER NUTRIENT	POUND	19
25000600	POTASSIUM FERTILIZER NUTRIENT	POUND	19
25100105	MULCH, METHOD 1	ACRE	0.25
35100500	AGGREGATE BASE COURSE, TYPE A 6"	SQ YD	643
40200900	AGGREGATE SURFACE COURSE, TYPE B	CU YD	3
40201000	AGGREGATE FOR TEMPORARY ACCESS	TON	128
40600275	BITUMINOUS MATERIALS (PRIME COAT)	POUND	1,386
40803305	HOT-MIX ASPHALT SURFACE COURSE, MIX "C", N30	TON	74
40800050	INCIDENTAL HOT-MIX ASPHALT SURFACING	TON	22
42300200	PORTLAND CEMENT CONCRETE DRIVEWAY PAVEMENT, 6 INCH	SQ YD	318
42300400	PORTLAND CEMENT CONCRETE DRIVEWAY PAVEMENT, 8 INCH	SQ YD	57
42400100	PORTLAND CEMENT CONCRETE SIDEWALK 4 INCH	SQ FT	7,934
42400300	PORTLAND CEMENT CONCRETE SIDEWALK 6 INCH	SQ FT	688
42400800	DETECTABLE WARNINGS	SQ FT	203
44000200	DRIVEWAY PAVEMENT REMOVAL	SQ YD	442
44000300	CURB REMOVAL	FOOT	57.0
44000500	COMBINATION CURB AND GUTTER REMOVAL	FOOT	832.0
44000600	SIDEWALK REMOVAL	SQ FT	590
44200065	PAVEMENT PATCHING, TYPE 1, 6 INCH	SQ YD	5
54213657	PRECAST REINFORCED CONCRETE FLARED END SECTIONS 12"	EACH	2
542A0217	PIPE CULVERTS, CLASS A, TYPE 1 12"	FOOT	16
60255500	MANHCLES TO BE ADJUSTED	EACH	1
60260100	INLETS TO BE ADJUSTED	EACH	1
60600605	CONCRETE CURB, TYPE B	FOOT	462.0
60605000	COMBINATION CONCRETE CURB AND GUTTER, TYPE B-6.24	FOOT	29.0
60608572	COMBINATION CONCRETE CURB AND GUTTER, TYPE M-4.18	FOOT	382.0
60608582	COMBINATION CONCRETE CURB AND GUTTER, TYPE M-4.24	FOOT	84.0
* 68400205	CHAIN LINK FENCE, 5'	FOOT	32
67100100	MOBILIZATION	L SUM	1
72000100	SIGN PANEL - TYPE 1	SQ FT	45
72800100	TELESCOPING STEEL SIGN SUPPORT	FOOT	188
* 78000200	THERMOPLASTIC PAVEMENT MARKNG - LINE 4"	FOOT	651
* 78000600	THERMOPLASTIC PAVEMENT MARKNG - LINE 12"	FOOT	289
* 80300100	LOCATE UNDERGROUND CABLES	FOOT	75
20012450	CONCRETE STEPS	CU YD	2
X0300019	REMOVE AND REINSTALL PARKING BLOCKS	EACH	8
X0323256	REMOVE AND RELOCATE FLAGPOLE	EACH	1
* X0327235	LOCATE UNDERGROUND UTILITIES	FOOT	190
X7010216	TRAFFIC CONTROL AND PROTECTION, (SPECIAL)	L SUM	1

* DENOTES SPECIALTY ITEMS

208 East Main Street, Suite 100
 Bellville, Illinois 62220
 618.233.5877 phone
 618.233.5977 fax
 www.kaskaskiaeng.com
 LICENSE NO. 184-004773
 20-5080586



CONTRACT NO. 97540
 SEC. NO. 10-0012-00-BT

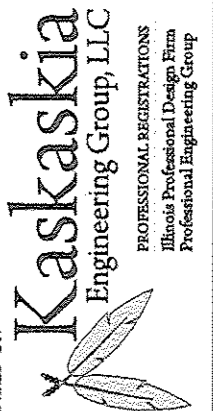
REV.	DATE	DESCRIP
△		
△		
△		
△		
△		

SHEET TITLE:
SUMMARY OF QUANTITIES

PROJECT TITLE:
**SHILOH SAFE ROUTES TO SCHOOL
 VILLAGE OF SHILOH
 ST. CLAIR COUNTY, IL**

DESIGNED BY: SMS	SHEET
DRAWN BY: JLT	03
CHECKED BY: DWK	
DATE OF PRELIMINARY: 7/24/2013	
DATE OF FINAL: 4/24/2015	
SHEET NO. 03 OF 12 SHEETS	
PROJECT NUMBER 08-0013.01	

208 East Main Street, Suite 100
 Bellville, Illinois 62220
 618.233.5877 phone
 618.233.5977 fax
 www.kaskaskiaeng.com



LICENSE NO.
 184,004773
 20-5080586

PREPARED BY:

CONTRACT NO. 97540
 SEC. NO. 10-00012-00-BT

REV	DATE	DESCRIP
△		
△		
△		
△		
△		

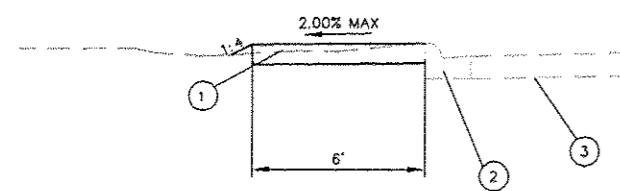
TYPICAL SECTIONS

SHILOH SAFE ROUTES TO SCHOOL
 VILLAGE OF SHILOH
 ST. CLAIR COUNTY, IL

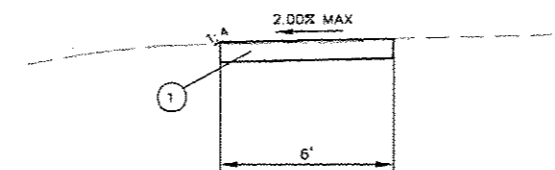
SHEET TITLE:

PROJECT TITLE:

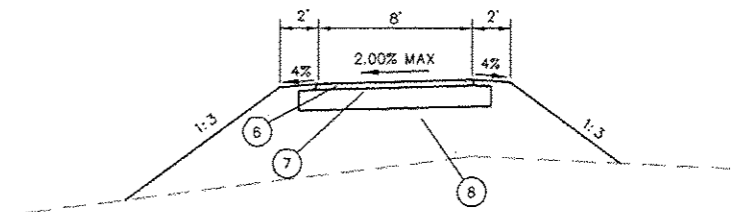
DESIGNED BY: SMS	SHEET
DRAWN BY: JLT	04
CHECKED BY: DWK	
DATE OF PRELIMINARY: 7/24/2013	
DATE OF FINAL: 4/24/2015	
SHEET NO. 04 OF 19 SHEETS	
PROJECT NUMBER 08-0011.01	



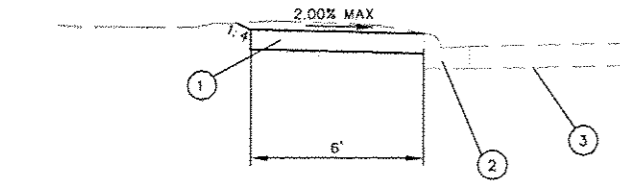
SIERRA DRIVE SIDEWALK
 STA. 1+72 TO STA. 3+11
 STA. 3+36 TO STA. 4+41
 STA. 5+11 TO STA. 6+54
 STA. 8+57 TO STA. 8+73



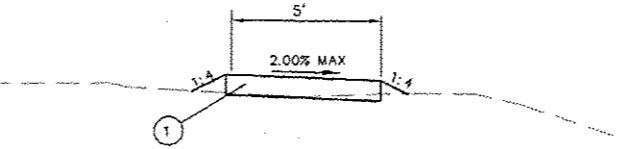
SIERRA DRIVE SIDEWALK
 STA. 16+15 TO STA. 16+84



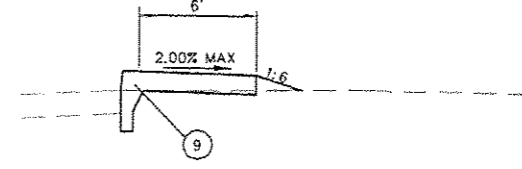
SEIBERT RD. TO DIAMOND CT.
 SHARED USE PATH
 STA. 0+10 TO STA. 5+03



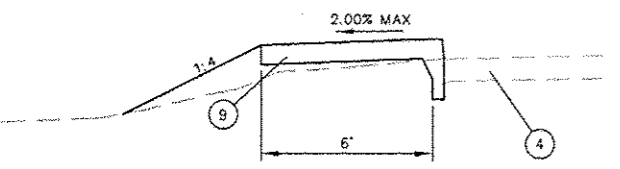
SIERRA DRIVE SIDEWALK
 STA. 3+11 TO STA. 3+36
 STA. 4+41 TO STA. 5+11
 STA. 6+64 TO STA. 8+57
 STA. 8+73 TO STA. 14+29



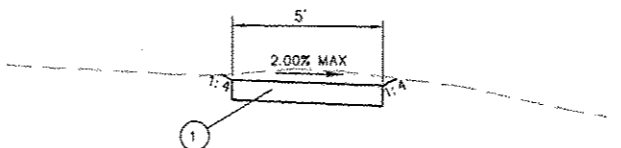
WENDY WAY TO WARRIOR WAY
 SIDEWALK
 STA. 1+00 TO STA. 1+36
 STA. 1+61 TO STA. 3+53



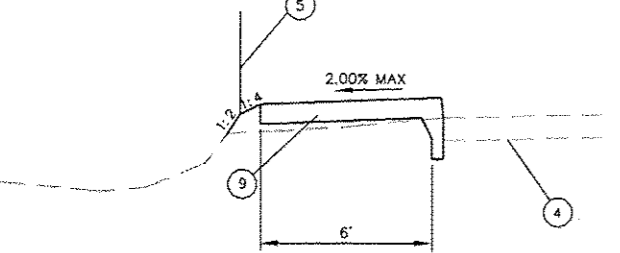
DIAMOND COURT SIDEWALK
 STA. 100+00 TO STA. 101+50



SIERRA DRIVE SIDEWALK
 STA. 14+29 TO STA. 15+53
 STA. 15+82 TO STA. 16+15



WENDY WAY TO WARRIOR WAY
 SIDEWALK
 STA. 1+36 TO STA. 1+61
 STA. 3+53 TO STA. 3+85



SIERRA DRIVE SIDEWALK
 STA. 15+53 TO STA. 15+82

MIXTURE USE	SHARED USE PATH
AC/PG	PG 64-22
RAP % (MAX)	SEE SPECIAL PROVISION
DESIGN AIR VOIDS	4.0% @ Ndes=30
MIX COMPOSITION (Gradation)	IL 9.5L
FRICTION AGG	MIXTURE "C"
QUALITY MGMT PROGRAM	QC/QA

- LEGEND
- ① PROPOSED PC CONCRETE SIDEWALK, 4"
 - ② EXISTING CONCRETE CURB AND GUTTER
 - ③ EXISTING BITUMINOUS PAVEMENT
 - ④ EXISTING GRAVEL PAVEMENT
 - ⑤ PROPOSED CHAIN LINK FENCE
 - ⑥ PROPOSED HOT MIX ASPHALT, SURFACE COURSE MIX "C", N30-3"
 - ⑦ PROPOSED AGGREGATE BASE COURSE, TYPE A-6"
 - ⑧ PROPOSED COMPACTED EARTH SUBGRADE
 - ⑨ PROPOSED PC CONCRETE SIDEWALK, 4", WITH CONCRETE BARRIER CURB

SIDEWALK SCHEDULE

Table with columns: STATION, STATION, OFFSET, SIDEWALK REM (SQ FT), PC CONC SIDEWALK 4 (SQ FT), PC CONC SIDEWALK 6 (SQ FT), DETECTABLE WARNINGS (SQ FT). Rows include SIERRA DRIVE, WENDY WAY TO WARRIOR WAY, DIAMOND COURT, and TOTAL.

CURB & GUTTER SCHEDULE

Table with columns: STATION, STATION, OFFSET, CURB REM (FOOT), COMB CURB GUTTER REM (FOOT), CONC CURB TB (FOOT), COMB CC&G TB6.24 (FOOT), COMB CC&G TM4.18 (FOOT), COMB CC&G TM4.24 (FOOT). Rows include SIERRA DRIVE, WENDY WAY TO WARRIOR WAY, DIAMOND COURT, and TOTAL.

PAVEMENT MARKING SCHEDULE

Table with columns: LOCATION, THPL PVT MK LINE 4 (FOOT), THPL PVT MK LINE 12 (FOOT). Rows include SIERRA DRIVE, SHARED USE PATH, DIAMOND COURT, and TOTAL.

PAVEMENT SCHEDULE

Table with columns: STATION, STATION, AGG BASE CSE A 6 (SQ YD), AGG SURF CSE B (CU YD), BIT MATLS PR CT (POUND), HMA SC "C" N30 (TON), PAVT PATCH T2 6 (SQ YD). Rows include SIERRA DRIVE, SHARED USE PATH (SEIBERT - DIAMOND), DIAMOND COURT, and TOTAL.

SIGN AND POST SCHEDULE

Table with columns: STATION, OFFSET, TYPE, DESCRIPTION, Size, SIGN PANEL T1 (SQ FT), TELES STL SIN SUP SPL (FOOT), COMMENT. Rows include WENDY WAY TO WARRIOR WAY, SHARED USE PATH, DIAMOND COURT, and TOTAL.

SEEDING SCHEDULE

Table with columns: STATION, STATION, SEEDING CL 1A (ACRE), NITROGEN FERT NUTR (POUND), PHOSPHORUS FERT NUTR (POUND), POTASSIUM FERT NUTR (POUND), MULCH METHOD 1 (ACRE). Rows include SIERRA DRIVE, WENDY WAY TO WARRIOR WAY, SHARED USE PATH, and TOTAL.

EARTHWORK SCHEDULE

Table with columns: STATION, STATION, EARTH EXCAVATION (CU YD), EARTH EXCAVATION ADJUSTED FOR SHRINKAGE (NOTE 1) (CU YD), EMBANKMENT (NOTE 2) (CU YD), EARTHWORK BALANCE (NOTE 3) (CU YD). Rows include SIERRA DRIVE, WENDY WAY TO WARRIOR WAY, SHARED USE PATH, DIAMOND COURT, and TOTAL.

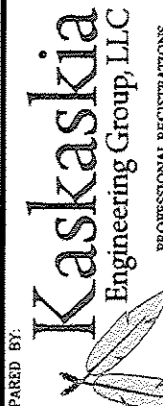
EARTHWORK NOTES:

- 1. ESTIMATED SHRINKAGE FACTOR = 25%.
2. APPROXIMATE EMBANKMENT QUANTITY IS SHOWN FOR INFORMATION ONLY.
3. APPROXIMATE EARTHWORK BALANCE IS SHOWN FOR INFORMATION ONLY.

ENTRANCE SCHEDULE

Table with columns: STATION, OFFSET, ENTRANCE TYPE, ENTRANCE WIDTH "W" (FOOT), ENTRANCE DEPTH "Y" (FOOT), AGG BASE CSE A 6 (SQ YD), AGGREGATE-TEMP ACCESS (TON), DRIVE PAVEMENT REM (SQ YD), INCIDENTAL HMA SURF (TON), PCC DRIVEWAY PAVT 6 (SQ YD), PCC DRIVEWAY PAVT 8 (SQ YD). Rows include SIERRA DRIVE, DIAMOND COURT, and TOTAL.

208 East Main Street, Suite 100
Bellaire, Illinois 62220
618.233.5877 phone
618.233.5977 fax
www.kaskaskiaeng.com



PROFESSIONAL REGISTRATIONS
Illinois Professional Design Firm
Professional Engineering Group

CONTRACT NO. 97540
SEC. NO. 10-00012-00-BT

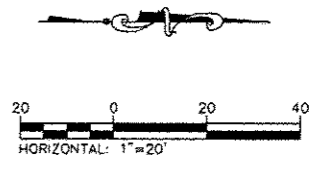
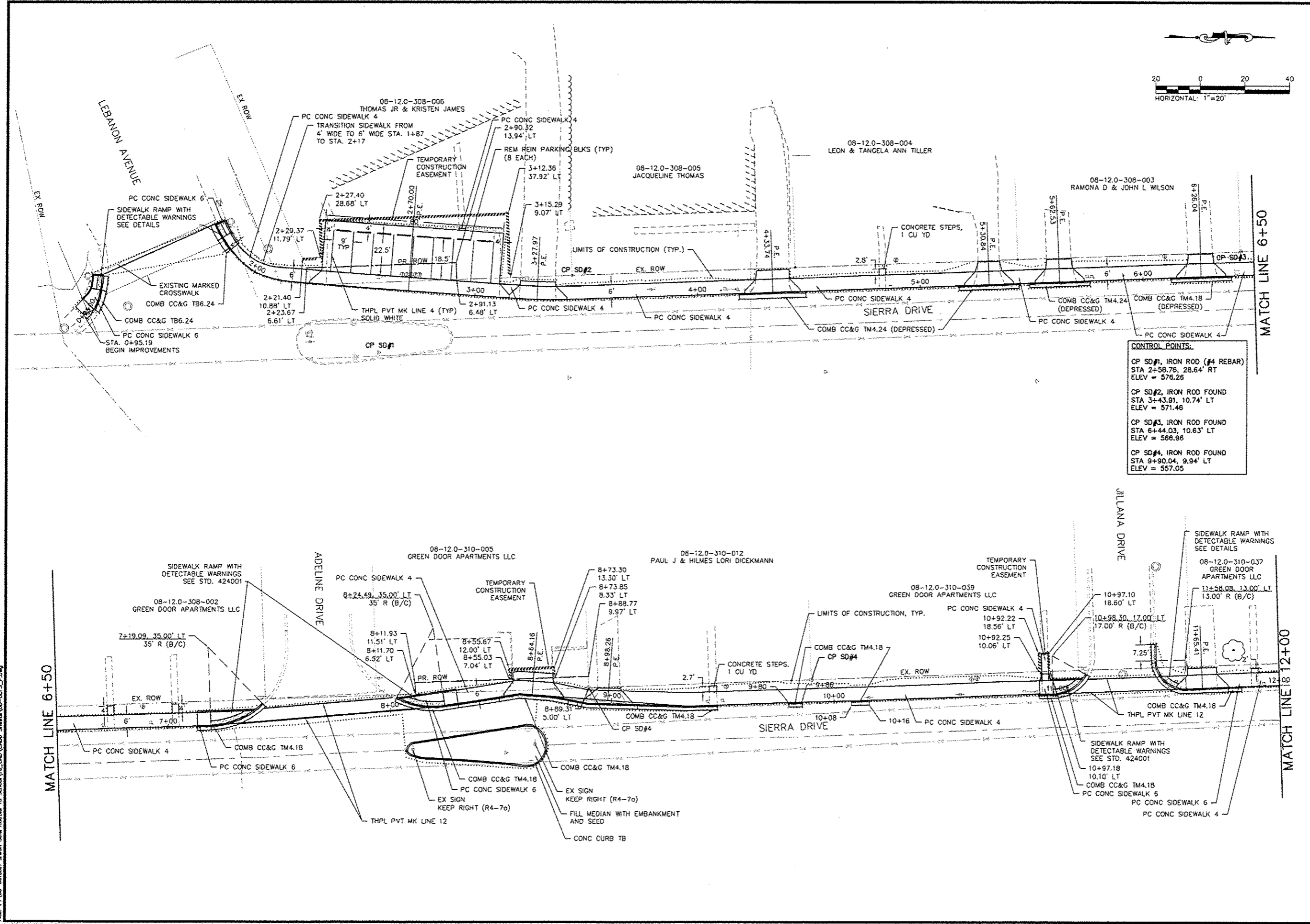
Table with columns: REV, DATE, DESCRIP. Rows 1 through 5.

SCHEDULES

SHILOH SAFE ROUTES TO SCHOOL
VILLAGE OF SHILOH
ST. CLAIR COUNTY, IL

SHEET TITLE:

Table with columns: DESIGNED BY: SMS, DRAWN BY: JLT, CHECKED BY: DWK, DATE OF PRELIMINARY: 7/24/2013, DATE OF FINAL: 4/24/2015, SHEET NO. 05 OF 12 SHEETS, PROJECT NUMBER: 08-011.01



CONTROL POINTS:

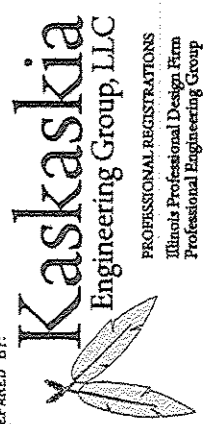
CP SD#1, IRON ROD (#4 REBAR)	STA 2+58.76, 28.64' RT	ELEV = 576.26
CP SD#2, IRON ROD FOUND	STA 3+43.91, 10.74' LT	ELEV = 571.46
CP SD#3, IRON ROD FOUND	STA 6+44.03, 10.63' LT	ELEV = 566.96
CP SD#4, IRON ROD FOUND	STA 9+90.04, 9.94' LT	ELEV = 557.05

REV.	DATE	DESCRIP
△		
△		
△		
△		
△		

CONTRACT NO. 97540
SEC. NO. 10-00012-00-BT

208 East Main Street, Suite 100
Bellefonte, Illinois 62220
618.233.5977 phone
618.233.5977 fax
www.kaskaskiaeng.com

LICENSER NO.
184.004773
20-5080586



PREPARED BY:

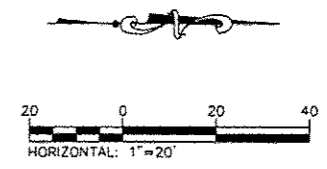
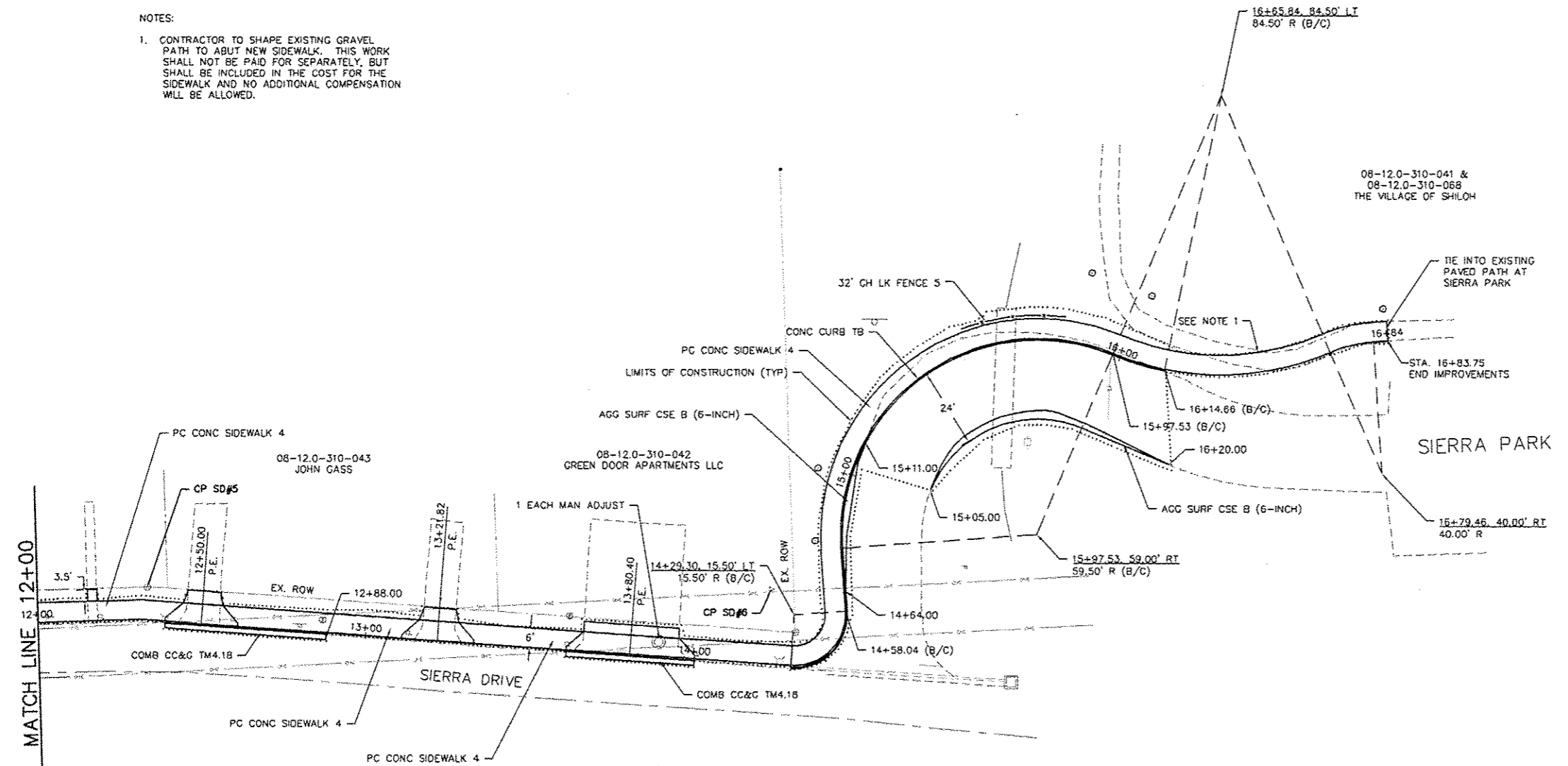
PROJECT TITLE:
**SHILOH SAFE ROUTES TO SCHOOL
VILLAGE OF SHILOH
ST. CLAIR COUNTY, IL**

PLAN
SIDEWALK
SIERRA DR.

DESIGNED BY:	SMS	SHEET
DRAWN BY:	JLT	
CHECKED BY:	DWK	06
DATE OF PRELIMINARY:	7/24/2013	
DATE OF FINAL:	4/24/2015	
SHEET NO. 06 OF 12 SHEETS		
PROJECT NUMBER 08-011.01		

FILE: P:\08-0011.01 Shiloh Safe Routes To School\10_CADD\CADD Sheets\08-0011.01_P.dwg

NOTES:
 1. CONTRACTOR TO SHAPE EXISTING GRAVEL PATH TO ABUT NEW SIDEWALK. THIS WORK SHALL NOT BE PAID FOR SEPARATELY, BUT SHALL BE INCLUDED IN THE COST FOR THE SIDEWALK AND NO ADDITIONAL COMPENSATION WILL BE ALLOWED.



CONTROL POINTS:

CP SD#5, IRON ROD FOUND
STA 12+32.72, 9.84' LT
ELEV = 553.58
CP SD#6, IRON ROD (#4 REBAR)
STA 14+66.26, 22.52' LT
ELEV = 552.19

208 East Main Street, Suite 100
 Bellville, Illinois 62230
 618.233.5877 phone
 618.233.5977 fax
 www.kaskaskiaeng.com

Kaskaskia Engineering Group, LLC
 PROFESSIONAL REGISTRATIONS
 Illinois Professional Design Firm
 Professional Engineering Group

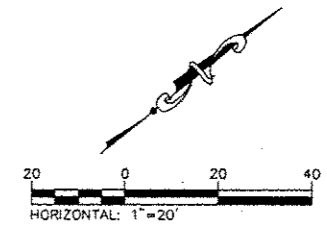
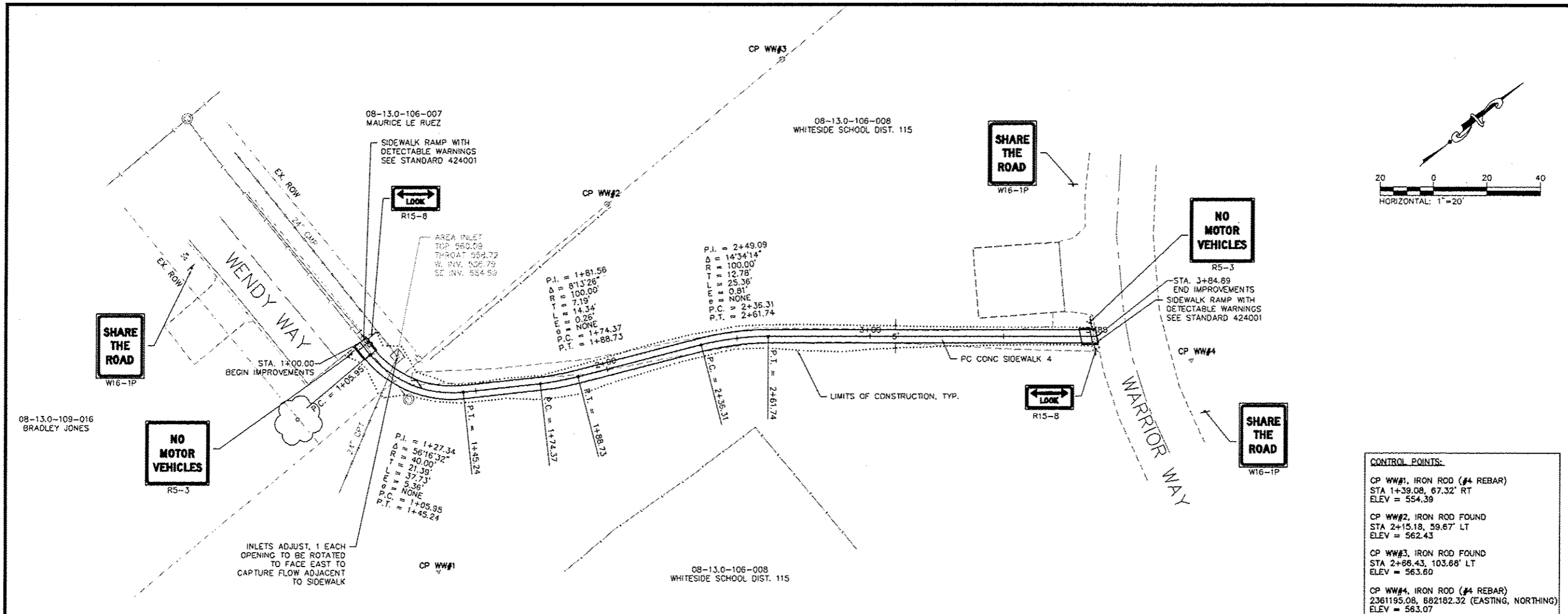
CONTRACT NO. 97540
 SEC. NO. 10-00012-00-BT

REV.	DATE	DESCRIP
△		
△		
△		
△		
△		

SHEET TITLE: PLAN
 SIDEWALK
 SIERRA DR.

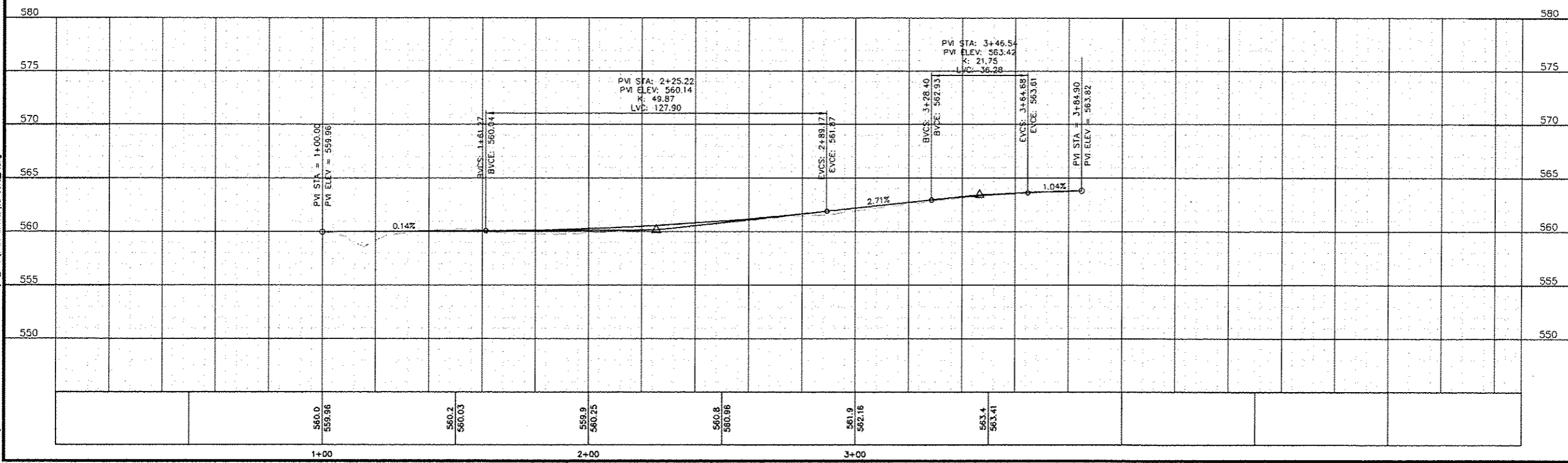
PROJECT TITLE:
 SHILOH SAFE ROUTES TO SCHOOL
 VILLAGE OF SHILOH
 ST. CLAIR COUNTY, IL

DESIGNED BY: SMS	SHEET
DRAWN BY: JLT	07
CHECKED BY: DWK	
DATE OF PRELIMINARY: 7/24/2013	
DATE OF FINAL: 4/24/2015	
SHEET NO. 07 OF 10 SHEETS	
PROJECT NUMBER: 08-0011.01	



CONTROL POINTS:

CP WW#1, IRON ROD (#4 REBAR)	STA 1+39.08, 67.32' RT	ELEV = 554.39
CP WW#2, IRON ROD FOUND	STA 2+15.18, 59.67' LT	ELEV = 562.43
CP WW#3, IRON ROD FOUND	STA 2+66.43, 103.66' LT	ELEV = 563.60
CP WW#4, IRON ROD (#4 REBAR)	2361195.08, 682182.32 (EASTING, NORTHING)	ELEV = 563.07



208 East Main Street, Suite 100
 Ballwin, Illinois 62220
 618.233.5977 phone
 618.233.5977 fax
 www.kaskaskiaeng.com

LICENSE NO. 184.004773
 20-S086086

Kaskaskia
 Engineering Group, LLC

PROFESSIONAL REGISTRATIONS
 Illinois Professional Design Firm
 Professional Engineering Group

CONTRACT NO. 97540
 SEC. NO. 10-00012-00-BT

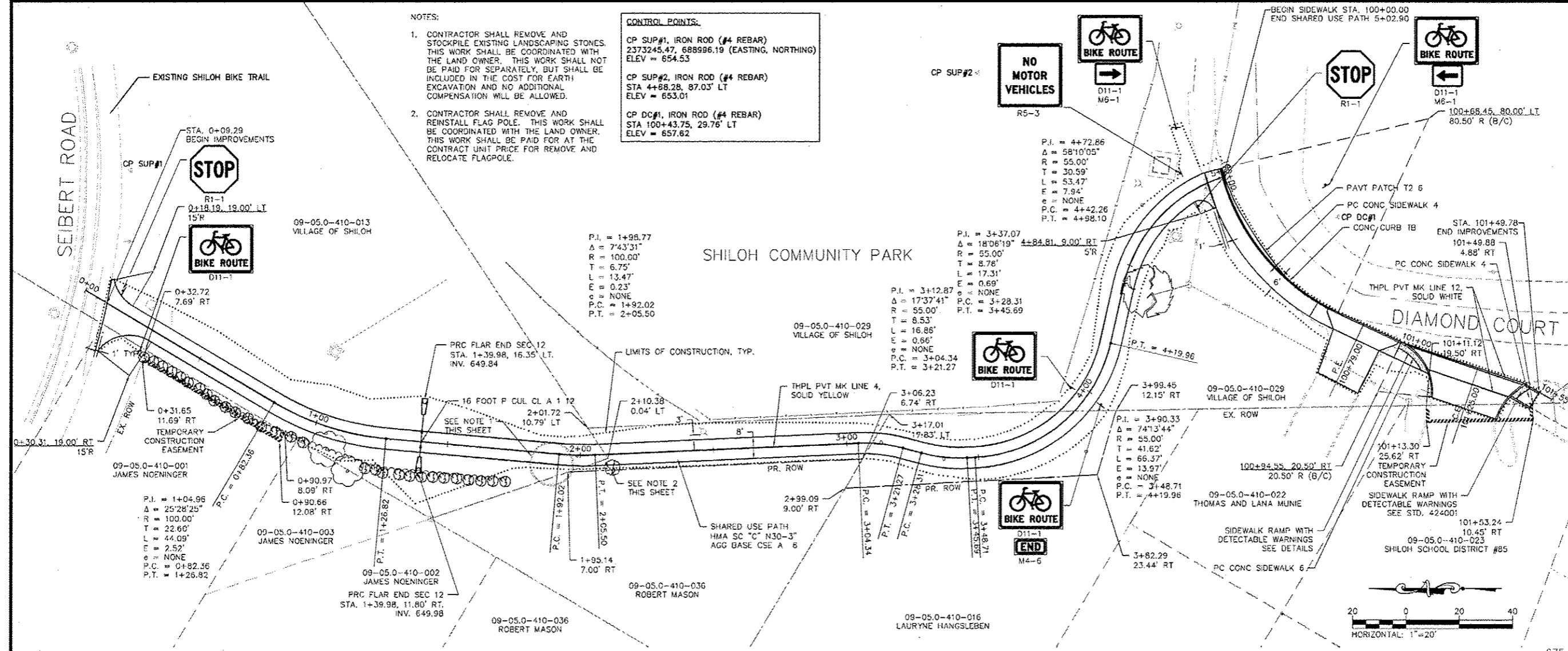
REV.	DATE	DESCRIP
△		
△		
△		
△		
△		

SHEET TITLE: PLAN AND PROFILE
 SIDEWALK
 WARRIOR WAY TO WENDY WAY

PROJECT TITLE:
 SHILOH SAFE ROUTES TO SCHOOL
 VILLAGE OF SHILOH
 ST. CLAIR COUNTY, IL

DESIGNED BY: SMS	SHEET 08
DRAWN BY: JLT	
CHECKED BY: DWK	
DATE OF PRELIMINARY: 7/24/2013	
DATE OF FINAL: 4/24/2015	
SHEET NO. 08 OF 19 SHEETS	
PROJECT NUMBER: 08-0013.01	

FILE: P:\08-0013.01_Siloh Safe Routes to School\10_CAD\CADD Sheets\08-0013_P.dwg



208 East Main Street, Suite 100
Belleisle, Illinois 62220
618.233.3677 Phone
618.233.3677 Fax
www.kaskaskiaeng.com

Kaskaskia
Engineering Group, LLC

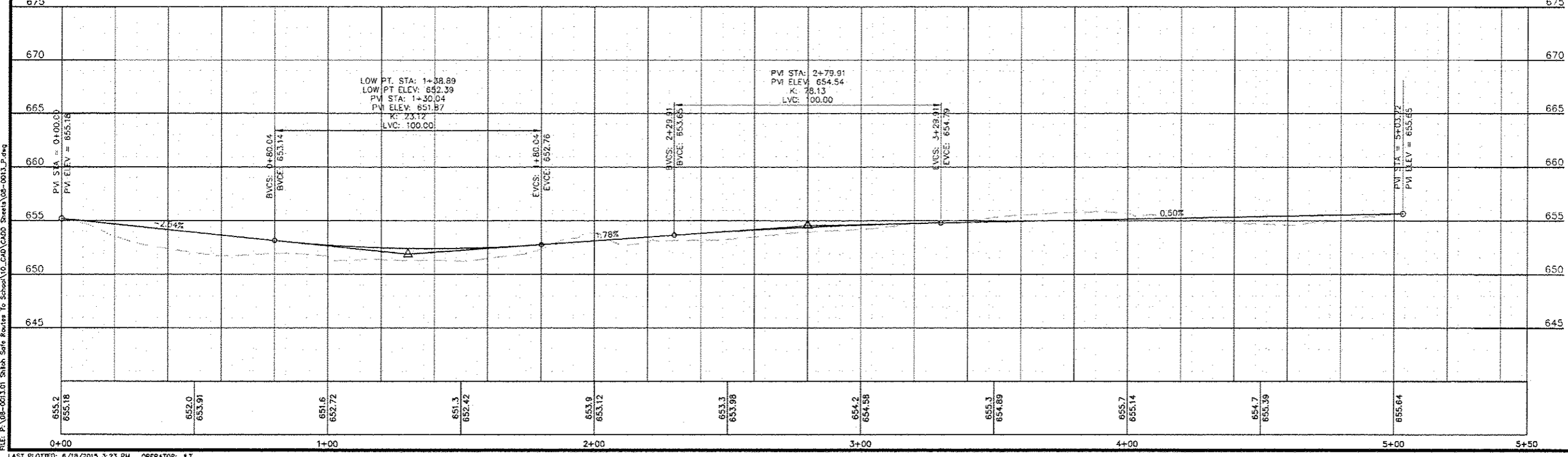
PROFESSIONAL REGISTRATIONS
Illinois Professional Design Firm
Professional Engineering Group

LICENSE NO. 184-004773
20-50801546

PREPARED BY:

CONTRACT NO. 97540
SEC. NO. 10-00012-00-BT

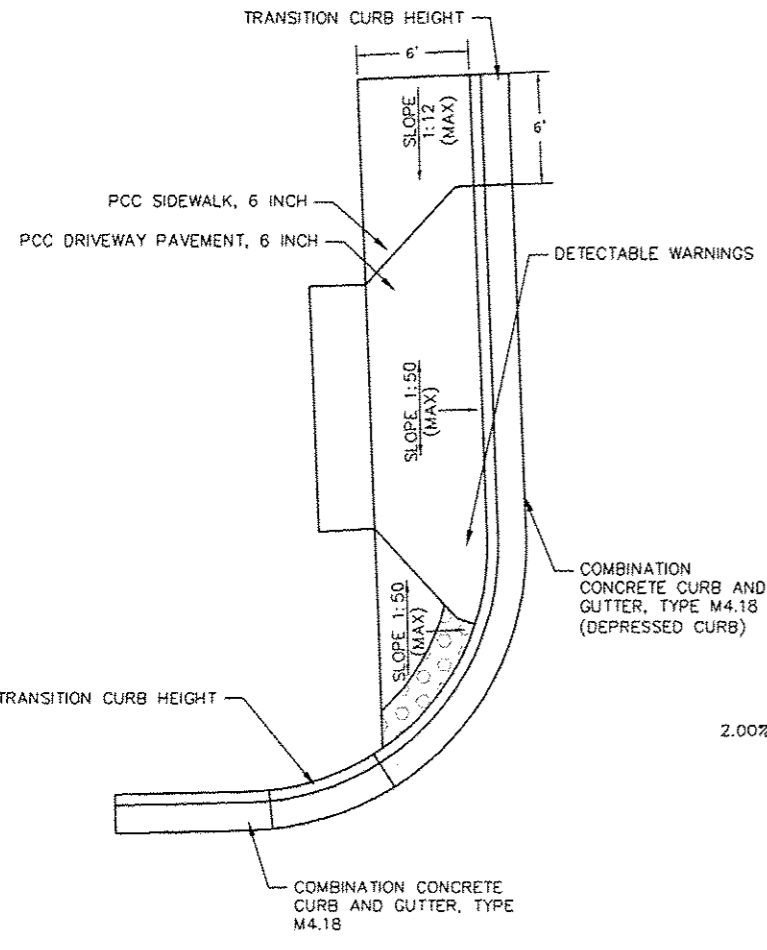
REV.	DATE	DESCRIP
△		
△		
△		
△		
△		



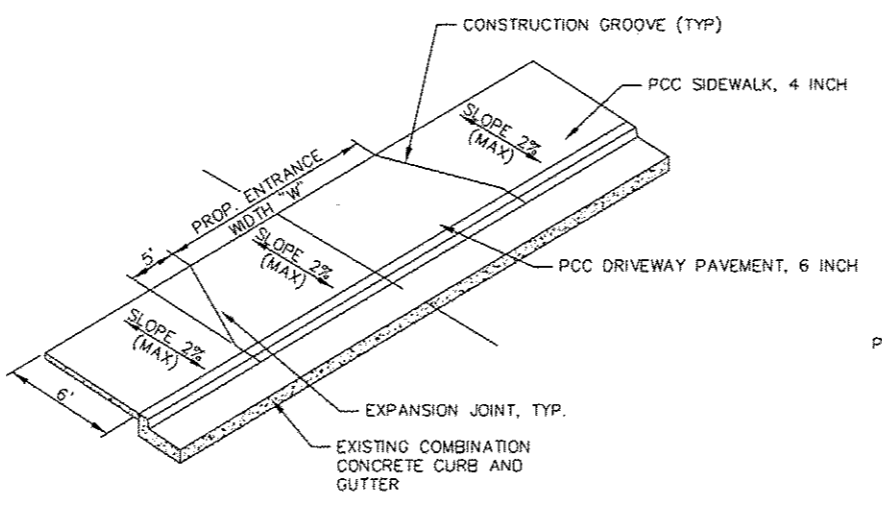
SHEET TITLE: PLAN AND PROFILE
SHARED USE PATH
SEIBERT RD. TO DIAMOND CT.

PROJECT TITLE: SHILOH SAFE ROUTES TO SCHOOL
VILLAGE OF SHILOH
ST. CLAIR COUNTY, IL

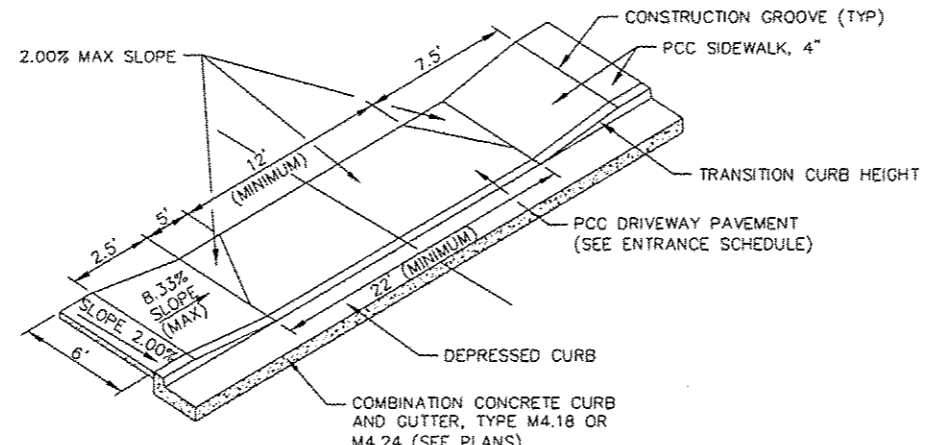
DESIGNED BY: SMS	SHEET
DRAWN BY: JLT	09
CHECKED BY: DWK	
DATE OF PRELIMINARY: 7/24/2013	DATE OF FINAL: 10/1/2013
SHEET NO. 09 OF 12 SHEETS	
PROJECT NUMBER 08-0013.01	



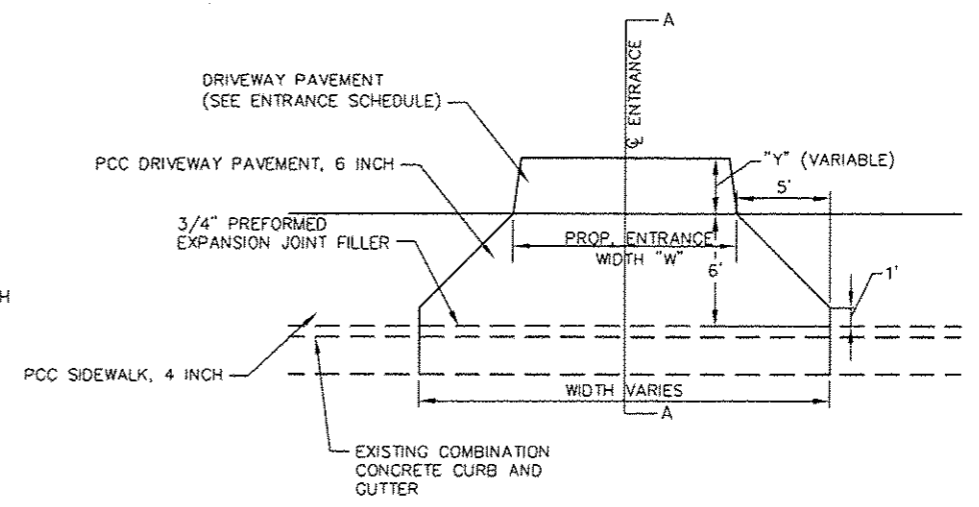
RAMP DETAIL JILLANA DRIVE AND SIERRA DRIVE (P.E. 11+65.41)
N.T.S.



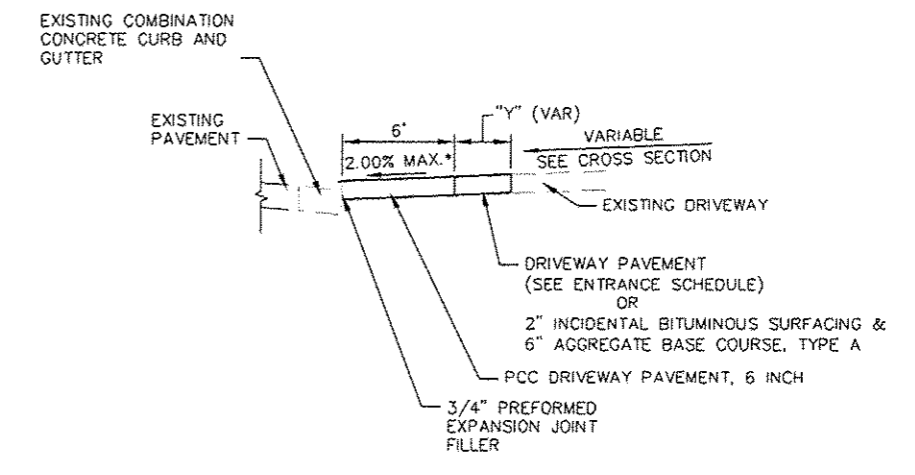
ENTRANCE DETAIL WITH EXISTING CURB AND GUTTER
N.T.S.



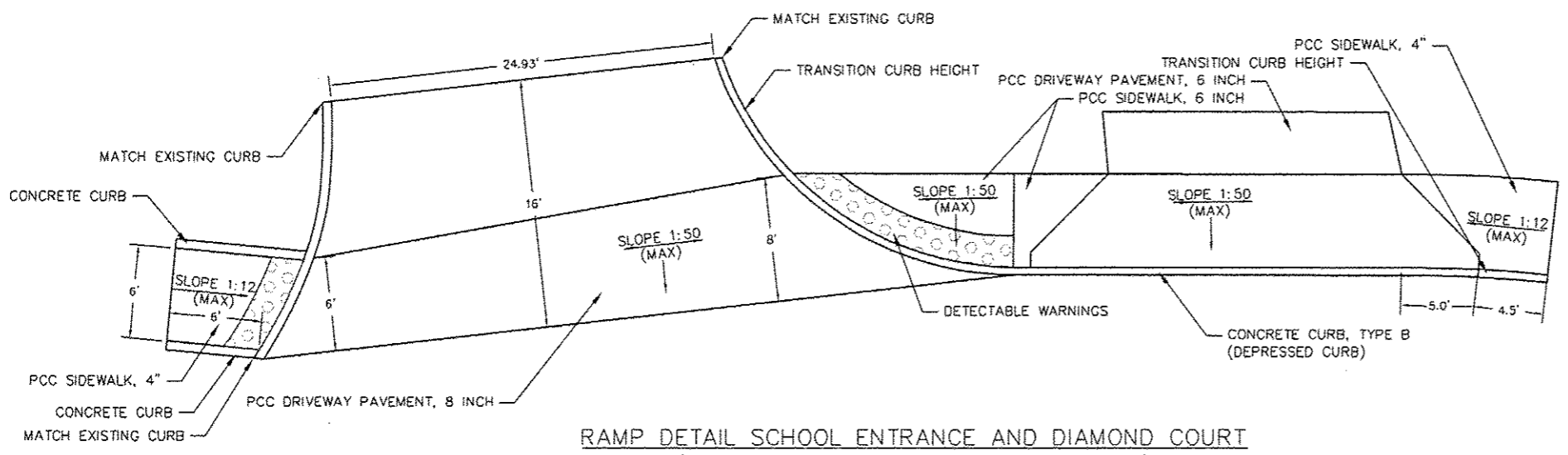
ENTRANCE DETAIL WITH DEPRESSED CURB AND GUTTER
N.T.S.



PLAN
N.T.S.



SECTION A-A
N.T.S.



RAMP DETAIL SCHOOL ENTRANCE AND DIAMOND COURT (P.E. 100+79.00 AND C.E. 101+25.00)
N.T.S.

208 East Main Street, Suite 100
Belleville, Illinois 62220
618.233.5877 phone
618.233.5977 fax
www.kaskaskiaeng.com

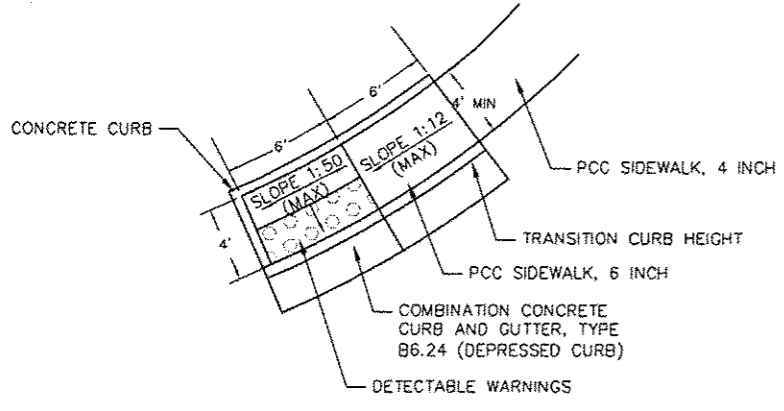
Kaskaskia
Engineering Group, LLC

CONTRACT NO. 97540
SEC. NO. 10-00012-00-BT

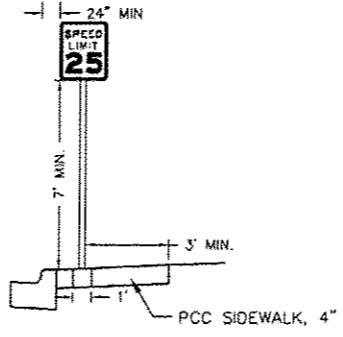
REV.	DATE	DESCRIP
△		
△		
△		
△		
△		

SHEET TITLE: DETAILS AND ENTRANCE SCHEDULE
PROJECT TITLE: SHILOH SAFE ROUTES TO SCHOOL
CITY OF BELLEVILLE
ST. CLAIR COUNTY, IL

DESIGNED BY: SMS	SHEET
DRAWN BY: JLT	10
CHECKED BY: DWK	
DATE OF PRELIMINARY: 7/24/2013	
DATE OF FINAL: 4/24/2015	
SHEET NO. 10 OF 12 SHEETS	
PROJECT NUMBER 08-0011.01	

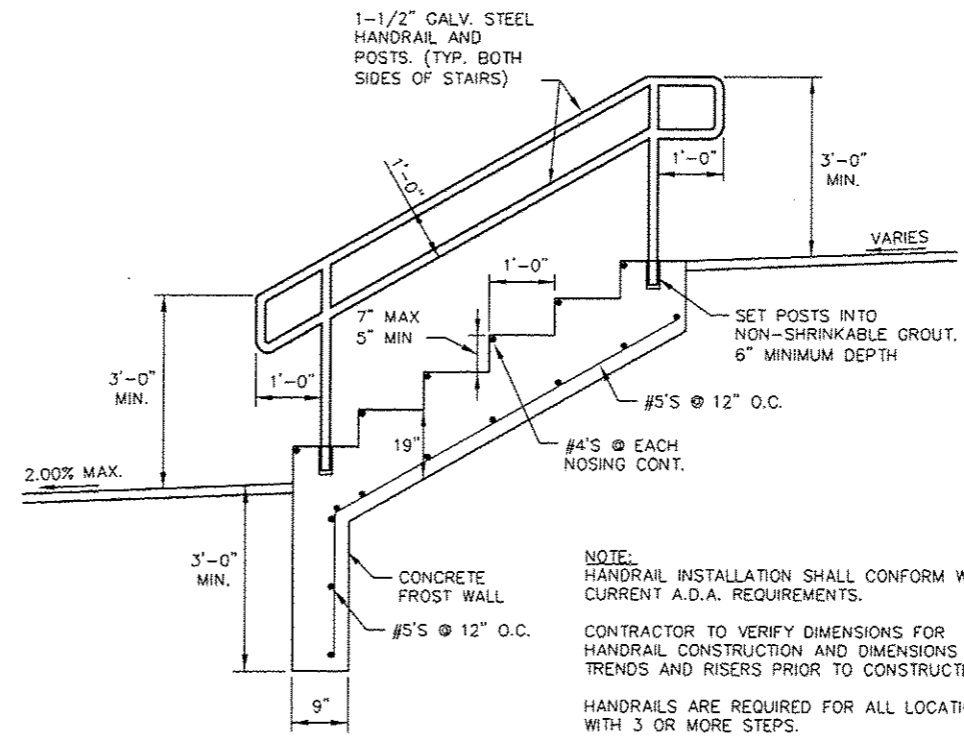


TYPICAL RAMP DETAILS AT SIERRA DRIVE AND LEBANON AVENUE
N.T.S.



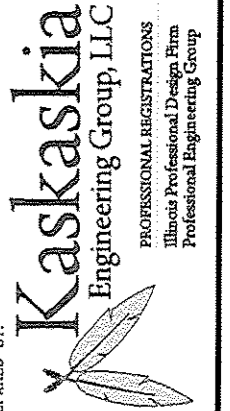
TYPICAL SIGN INSTALLATION IN SIDEWALK
N.T.S.

NOTES:
CONTRACTOR SHALL PROVIDE A 1' X 1' BLOCK OUT OR EQUIVALENT IN SIDEWALK AT SIGN POST LOCATIONS. BLOCK OUT TO MATCH ADJACENT CONSTRUCTION AFTER SIGN POST IS INSTALLED. THIS WORK SHALL BE INCIDENTAL TO THE RELATED PAY ITEMS AND NO ADDITIONAL COMPENSATION WILL BE ALLOWED.



CLASS SI CONCRETE STEPS
CONSTRUCTION DETAIL
N.T.S.

208 East Main Street, Suite 100
Belleville, Illinois 62230
618.233.5877 phone
618.233.5977 fax
www.kaskaskiaeng.com



PREPARED BY:

CONTRACT NO. 97540
SEC. NO. 10-00012-00-BT

REV.	DATE	DESCRIP
△		
△		
△		
△		
△		

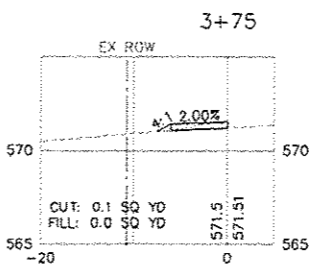
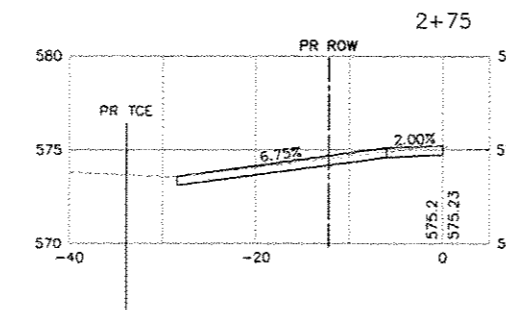
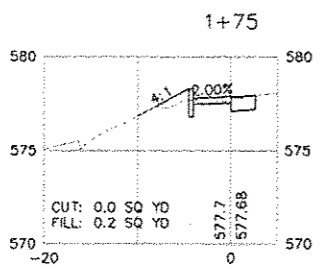
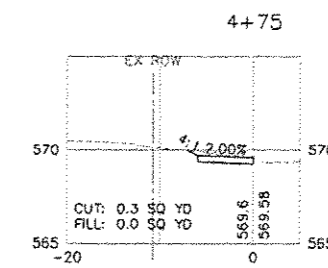
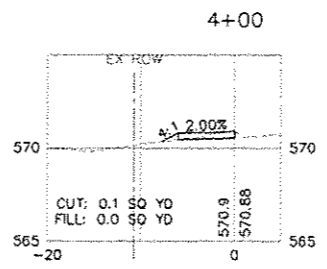
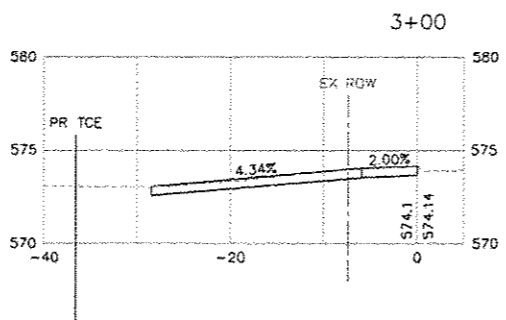
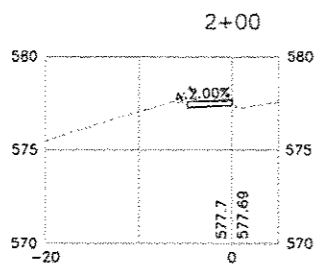
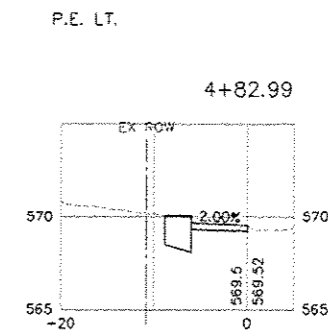
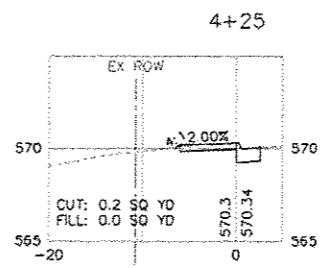
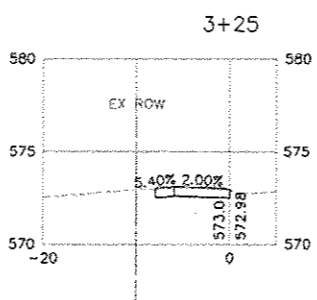
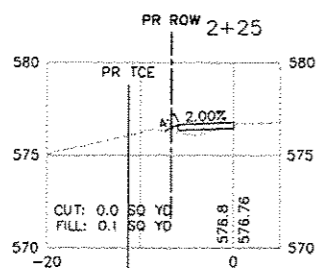
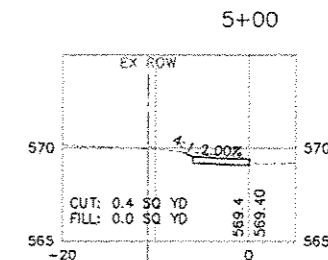
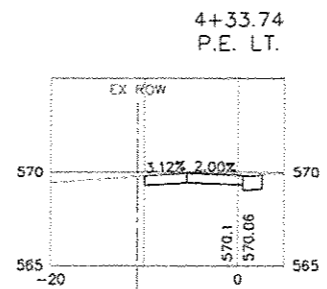
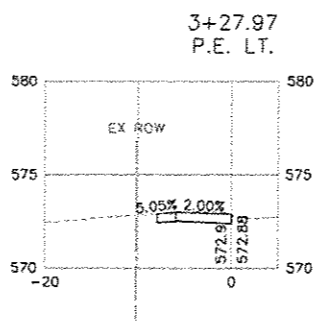
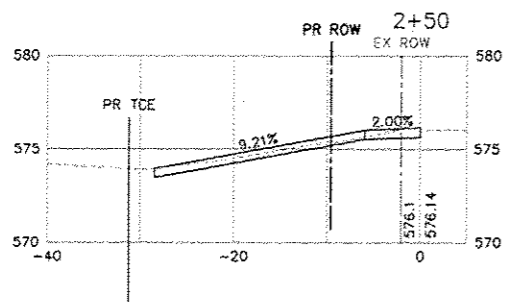
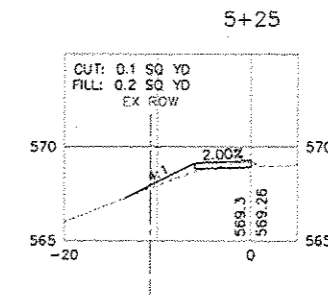
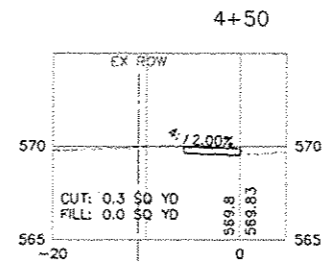
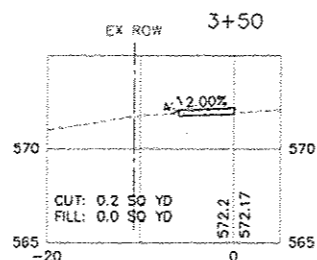
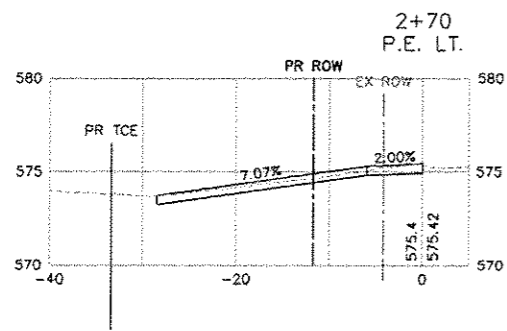
DETAILS

SHILOH SAFE ROUTES TO SCHOOL
CITY OF BELLEVILLE
ST. CLAIR COUNTY, IL

SHEET TITLE:

PROJECT TITLE:

DESIGNED BY: SMS	SHEET
DRAWN BY: JLT	11
CHECKED BY: DWK	
DATE OF PRELIMINARY: 7/24/2013	
DATE OF FINAL: 4/24/2015	
SHEET NO. 11 OF 10 SHEETS	
PROJECT NUMBER 08-0013.01	



208 East Main Street, Suite 100
 Belleville, Illinois 62220
 618.333.5877 phone
 618.333.5977 fax
 www.kaskaskiaeng.com

Kaskaskia
 Engineering Group, LLC

PROFESSIONAL REGISTRATIONS
 Illinois Professional Design Firm
 Professional Engineering Group

LICENSE NO.
 184-004773
 20-5080586

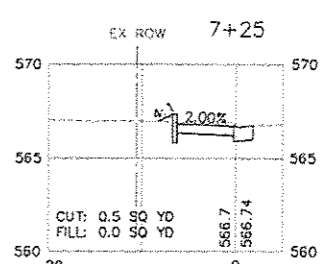
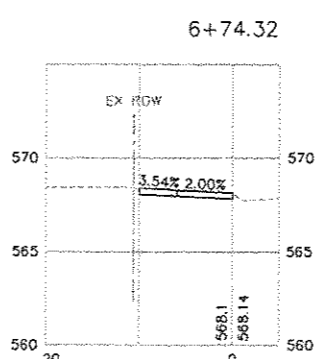
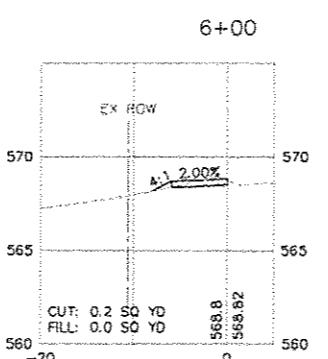
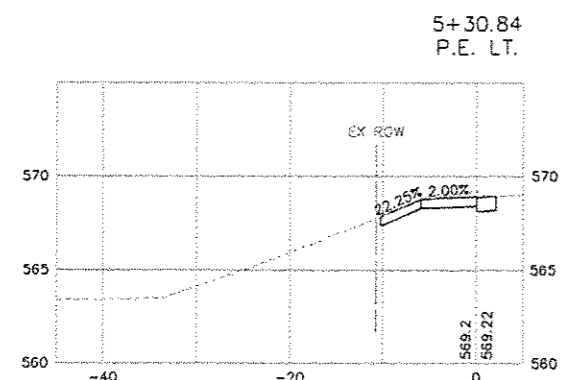
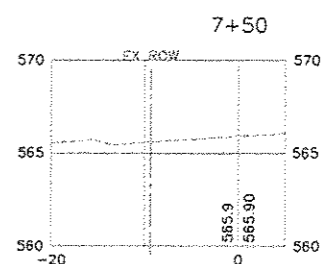
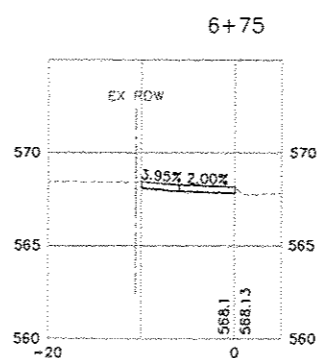
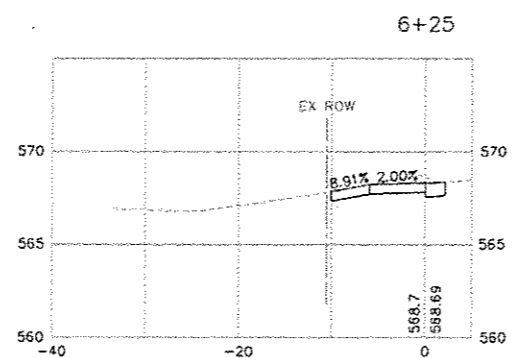
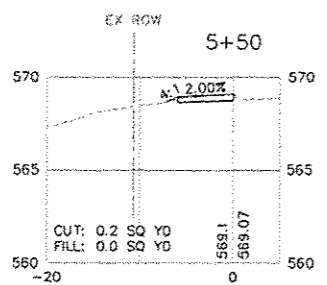
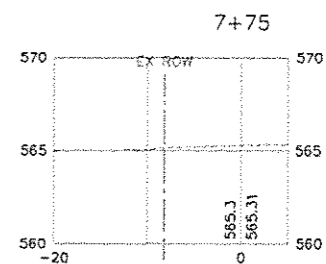
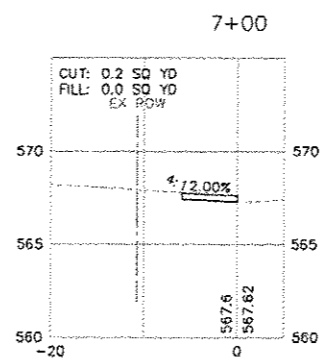
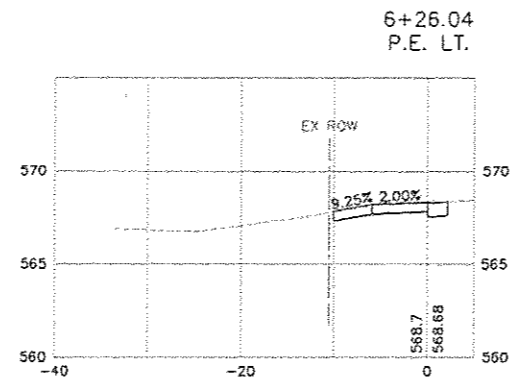
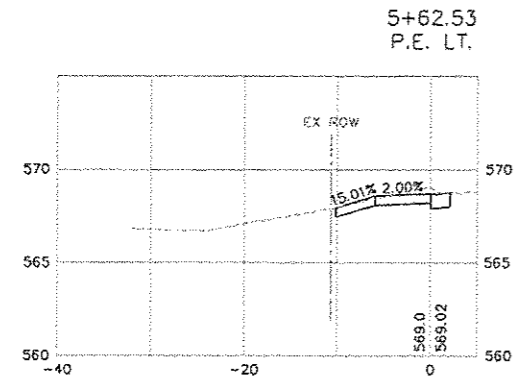
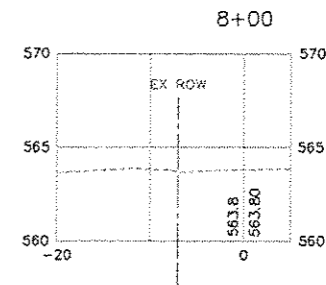
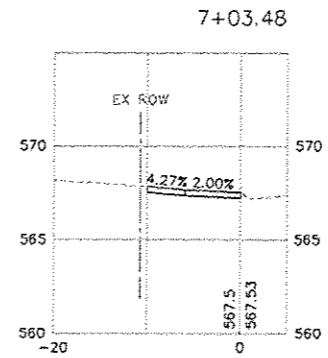
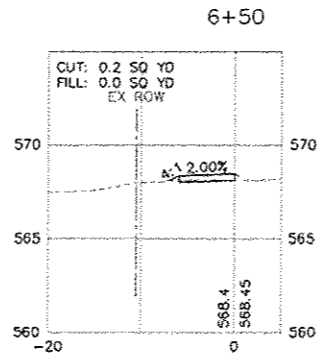
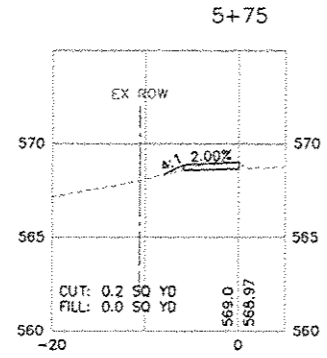
CONTRACT NO. 97540
 SEC. NO. 10-00012-00-BT

REV.	DATE	DESCRIP
△		
△		
△		
△		

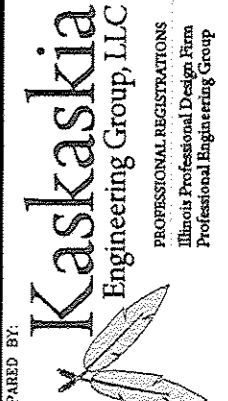
SHEET TITLE:
 CROSS SECTIONS
 SIERRA DR.

PROJECT TITLE:
 SHILOH SAFE ROUTES TO SCHOOL
 VILLAGE OF SHILOH
 ST. CLAIR COUNTY, IL

DESIGNED BY: SMS	SHEET
DRAWN BY: JLT	12
CHECKED BY: DWK	
DATE OF PRELIMINARY: 7/24/2013	
DATE OF FINAL: 4/24/2015	
SHEET NO. 12 OF 12 SHEETS	
PROJECT NUMBER 08-0013.01	



208 East Main Street, Suite 100
Bellefonte, Illinois 62220
618.233.5877 phone
618.233.5977 fax
www.kaskaskiaeng.com



PROFESSIONAL REGISTRATIONS
Illinois Professional Design Firm
Professional Engineering Group

LICENSE NO.
184.004773
20-5080586

PREPARED BY:

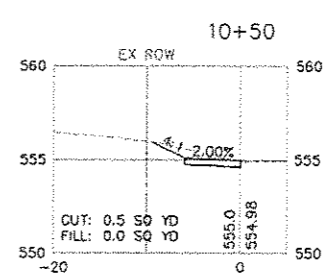
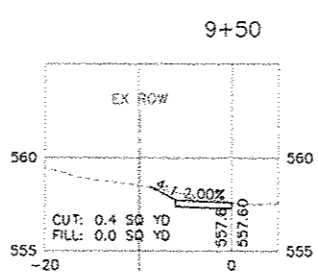
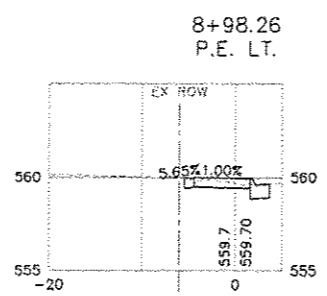
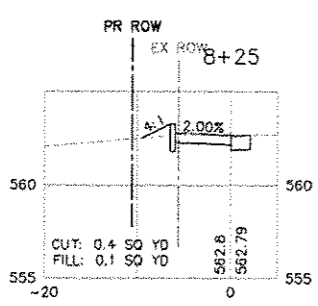
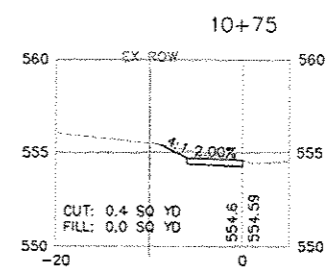
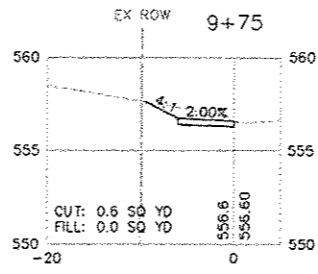
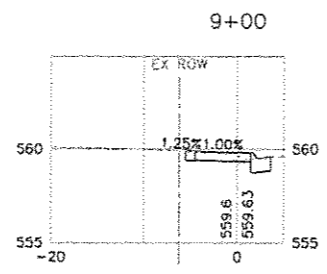
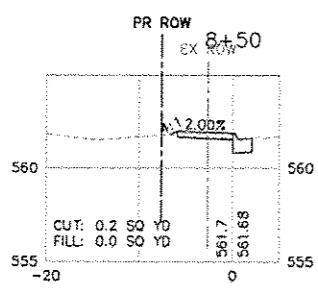
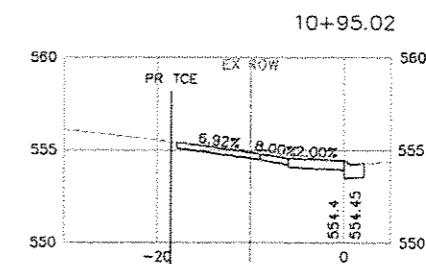
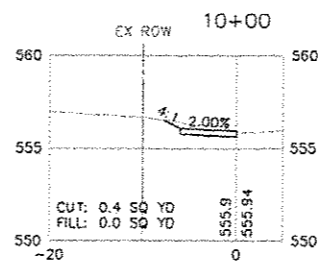
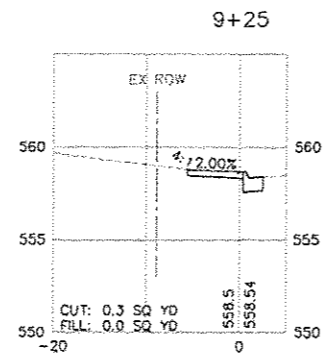
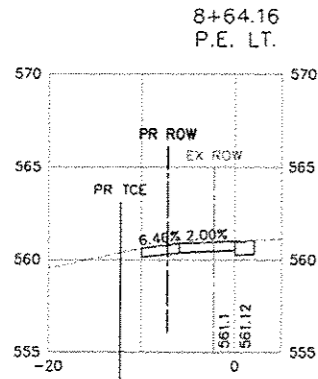
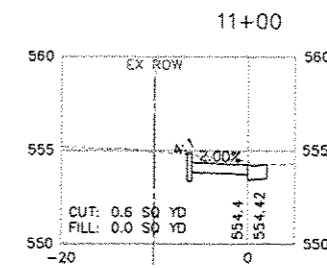
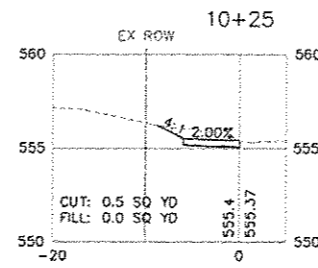
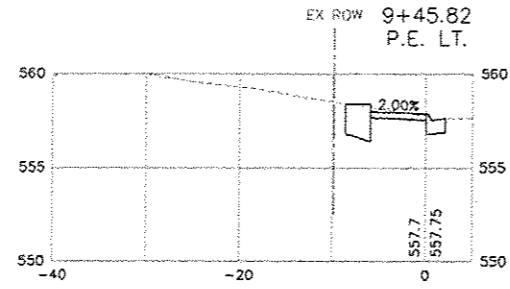
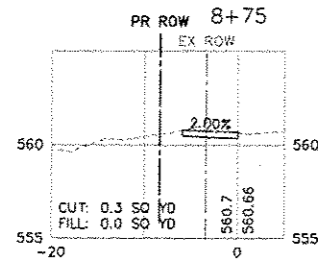
CONTRACT NO. 97540
SEC. NO. 10-00012-00-BT

REV.	DATE	DESCRIP
△		
△		
△		
△		
△		

SHEET TITLE:
CROSS SECTIONS
SIERRA DR.

PROJECT TITLE:
SHILOH SAFE ROUTES TO SCHOOL
VILLAGE OF SHILOH
ST. CLAIR COUNTY, IL

DESIGNED BY: SMS	SHEET
DRAWN BY: JLT	13
CHECKED BY: DWK	
DATE OF PRELIMINARY: 7/24/2013	
DATE OF FINAL: 4/24/2015	
SHEET NO. 13 OF 12 SHEETS	
PROJECT NUMBER: 08-0013.01	



208 East Main Street, Suite 100
 Belleville, Illinois 62220
 618.233.5877 phone
 618.233.5977 fax
 www.kaskaskiaeng.com

Kaskaskia
 Engineering Group, LLC

PROFESSIONAL REGISTRATIONS
 Illinois Professional Design Firm
 Professional Engineering Group

PREPARED BY:

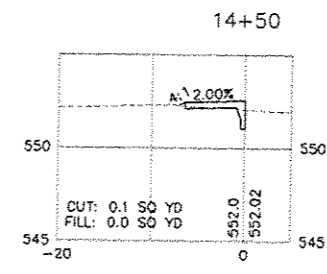
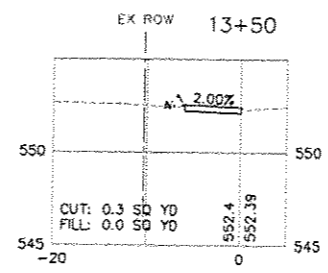
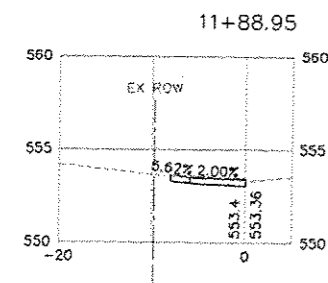
CONTRACT NO. 97540
 SEC. NO. 10-00012-00-BT

REV.	DATE	DESCRIP
△		
△		
△		
△		

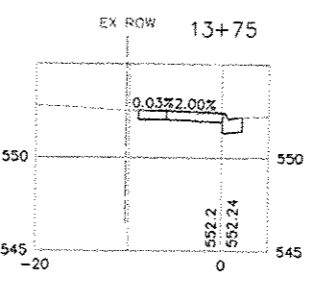
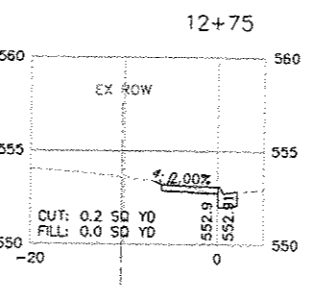
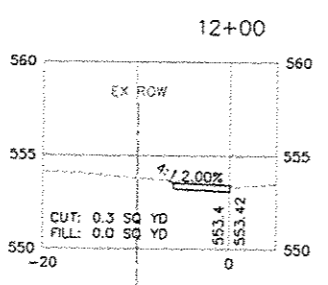
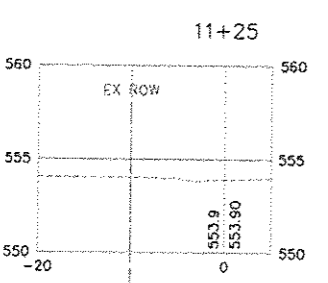
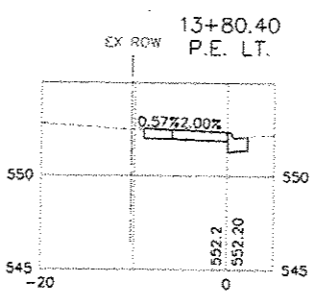
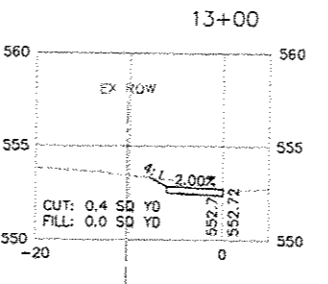
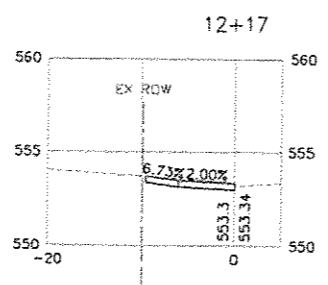
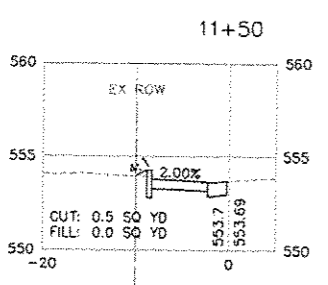
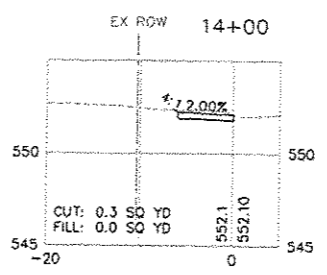
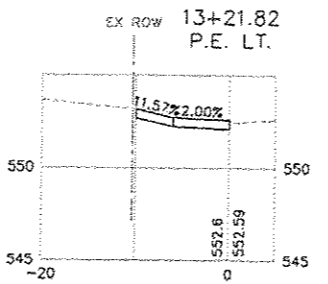
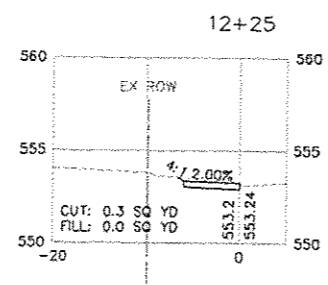
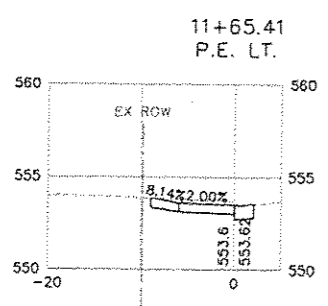
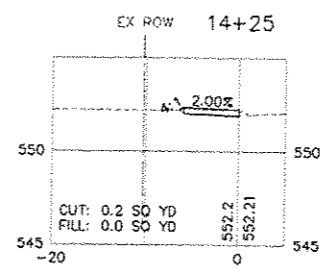
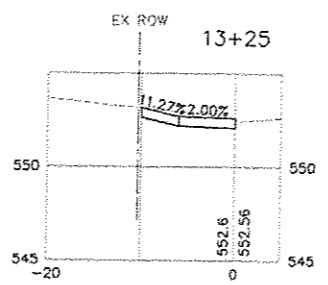
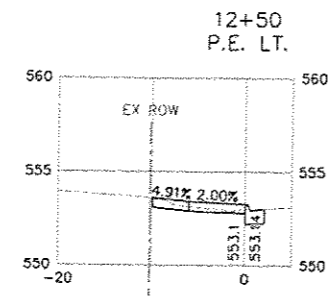
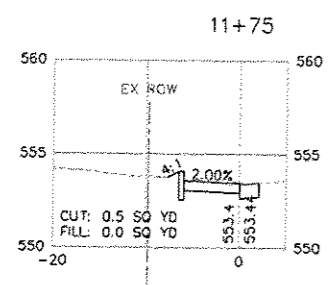
SHEET TITLE:
 CROSS SECTIONS
 SIERRA DR.
 PROJECT TITLE:
 SHILOH SAFE ROUTES TO SCHOOL
 VILLAGE OF SHILOH
 ST. CLAIR COUNTY, IL

DESIGNED BY: SMS	SHEET
DRAWN BY: JLT	14
CHECKED BY: DWK	
DATE OF PRELIMINARY: 7/24/2013	
DATE OF FINAL: 4/24/2015	
SHEET NO. 14 OF 19 SHEETS	
PROJECT NUMBER 08-0013.01	

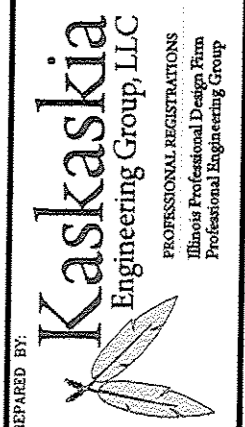
FILE: P:\08-0013.01_Siloh Safe Routes To School\10_CADD\CADD Sheets\08-0013_02.dwg



P.E. LT.



208 East Main Street, Suite 100
Burlington, Illinois 62220
618.233.5877 phone
618.233.5877 fax
www.kaskaskiaeng.com
LICENSE NO.
184.004773
20-5080586



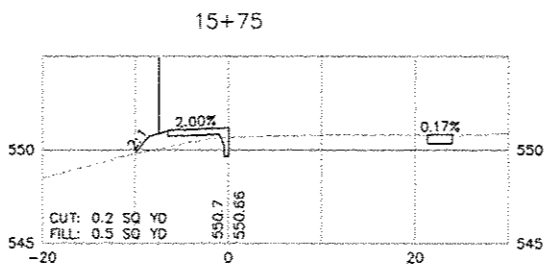
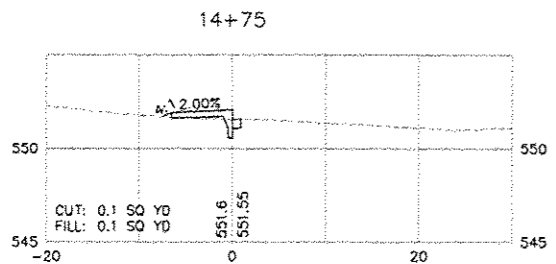
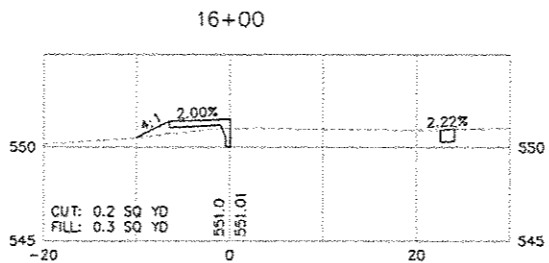
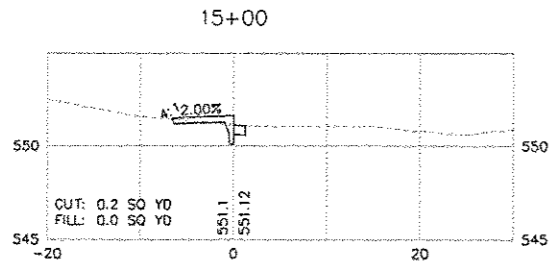
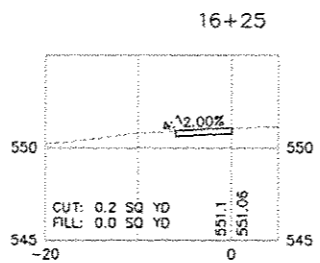
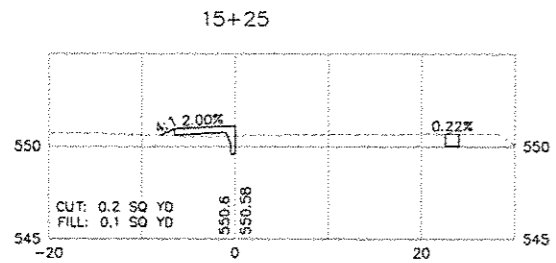
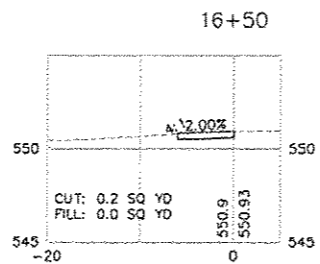
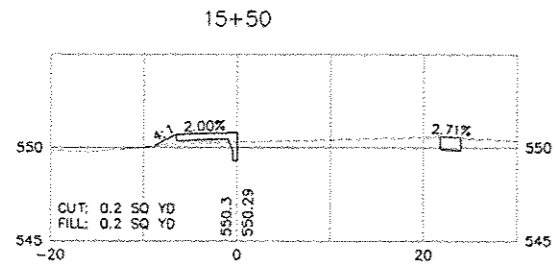
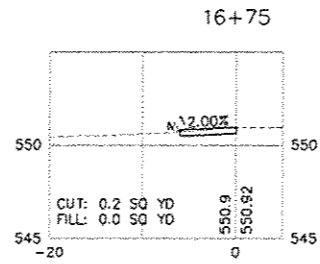
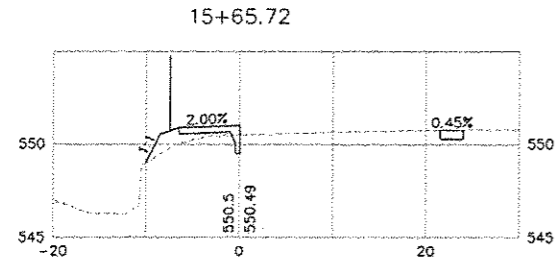
CONTRACT NO. 97540
SEC. NO. 10-00012-00-BT

REV.	DATE	DESCRIP
△		
△		
△		
△		
△		

CROSS SECTIONS
SIERRA DR.

SHILOH SAFE ROUTES TO SCHOOL
VILLAGE OF SHILOH
ST. CLAIR COUNTY, IL

DESIGNED BY: SMS	SHEET
DRAWN BY: JLT	15
CHECKED BY: DWK	
DATE OF PRELIMINARY: 7/24/2013	
DATE OF FINAL: 4/24/2015	
SHEET NO. 15 OF 19 SHEETS	
PROJECT NUMBER 08-0013.01	



208 East Main Street, Suite 100
Bellefonte, Illinois 62220
618.233.5877 phone
618.233.5977 fax
www.kaskaskiaeng.com

LICENSE NO.
184-004773
20-S080586

Kaskaskia
Engineering Group, LLC

PROFESSIONAL REGISTRATIONS
Illinois Professional Design Firm
Professional Engineering Group

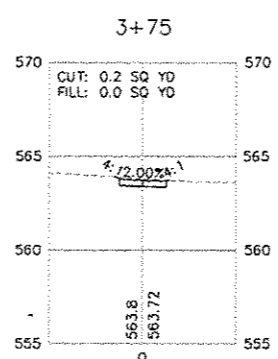
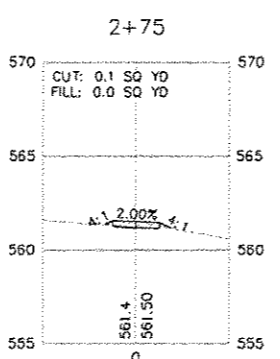
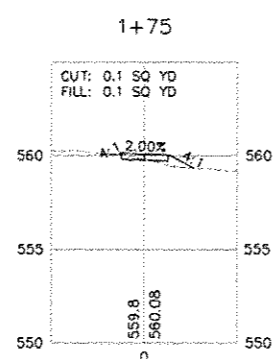
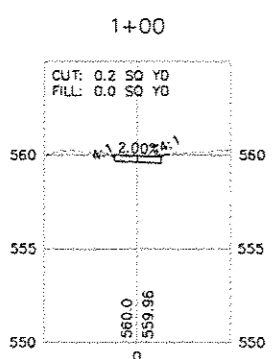
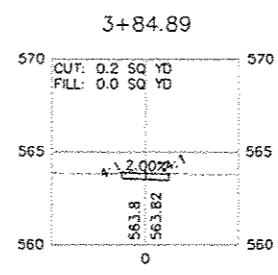
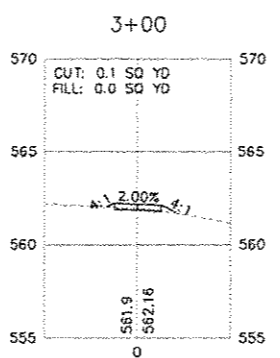
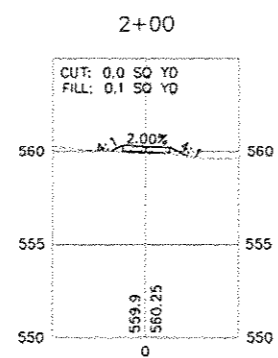
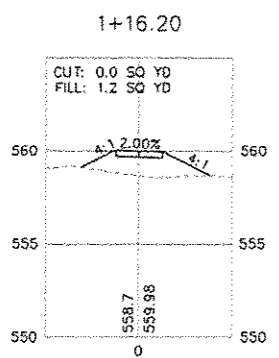
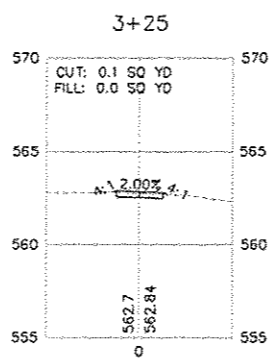
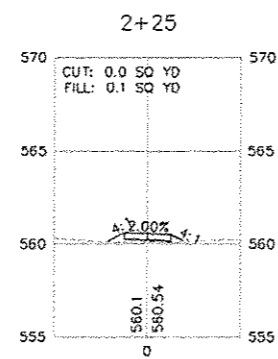
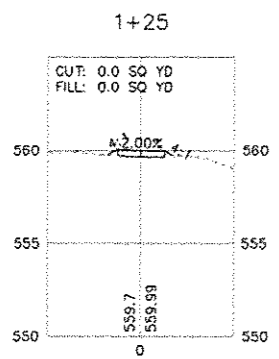
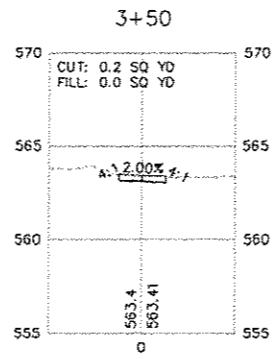
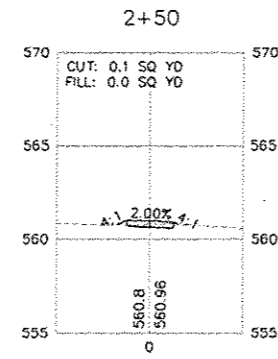
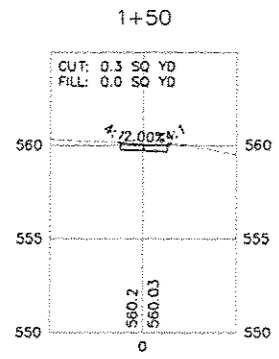
CONTRACT NO. 97540
SEC. NO. 10-00012-00-BT

REV	DATE	DESCRIP
△		
△		
△		
△		
△		

SHEET TITLE:
CROSS SECTIONS
SIERRA DR.

PROJECT TITLE:
SHILOH SAFE ROUTES TO SCHOOL
VILLAGE OF SHILOH
ST. CLAIR COUNTY, IL

DESIGNED BY: SMS	SHEET 16
DRAWN BY: JLT	
CHECKED BY: DWK	
DATE OF PRELIMINARY: 7/24/2013	
DATE OF FINAL: 4/24/2015	
SHEET NO. 16 OF 12 SHEETS	
PROJECT NUMBER 08-0013.01	



208 East Main Street, Suite 100
Bellaire, Illinois 62220
618.233.5877 phone
618.233.5877 fax
www.kaskaskiaeng.com



PROFESSIONAL REGISTRATIONS
Illinois Professional Design Firm
Professional Engineering Group

LICENSE NO.
184-004773
20-5080586

PREPARED BY:

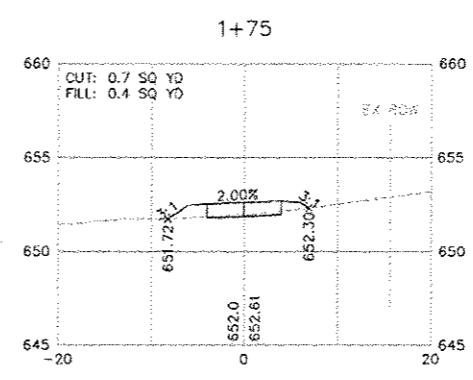
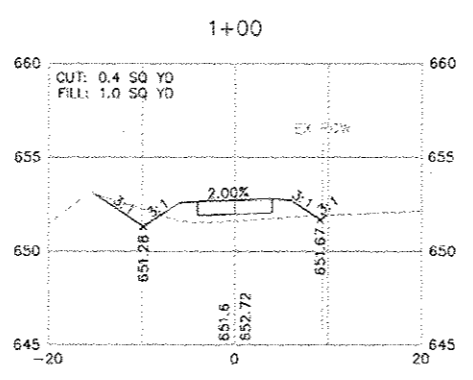
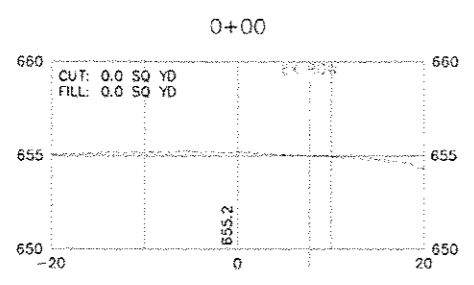
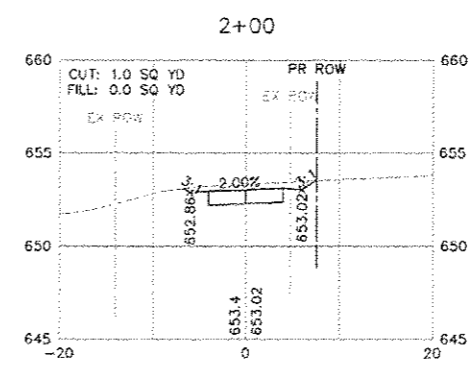
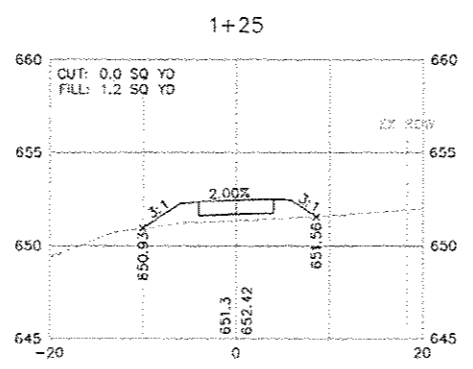
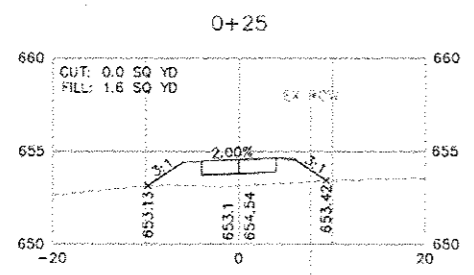
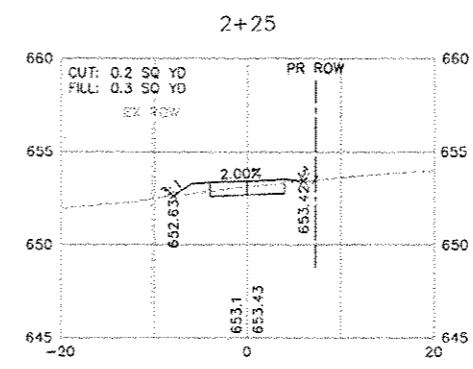
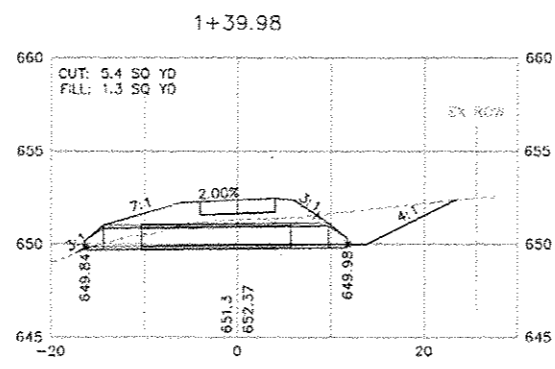
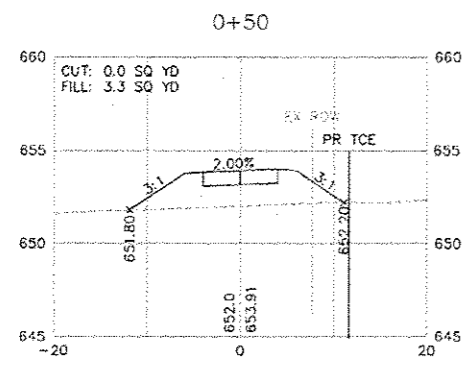
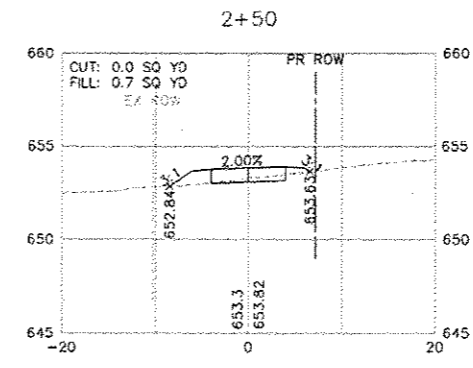
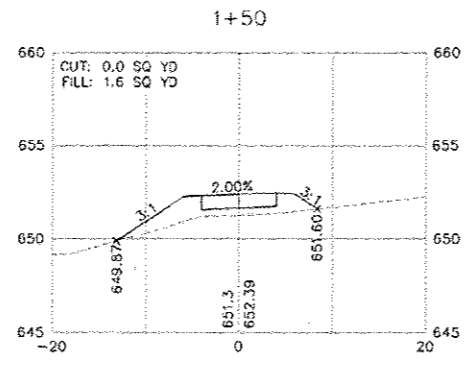
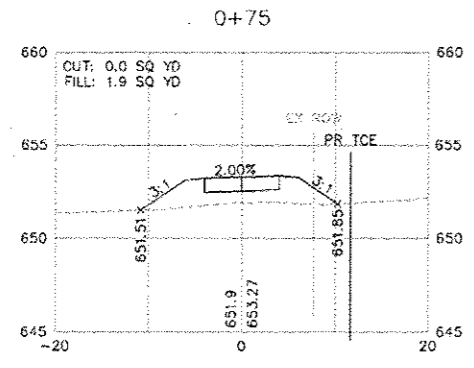
CONTRACT NO. 97540
SEC. NO. 10-00012-00-BT

REV.	DATE	DESCRIP
△		
△		
△		
△		
△		

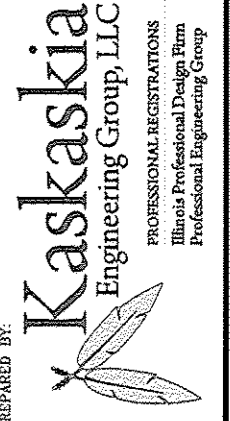
SHEET TITLE:
CROSS SECTIONS
WARRIOR WAY TO WENDY WAY

PROJECT TITLE:
SHILOH SAFE ROUTES TO SCHOOL
VILLAGE OF SHILOH
ST. CLAIR COUNTY, IL

DESIGNED BY: SMS	SHEET
DRAWN BY: JLT	17
CHECKED BY: DWK	
DATE OF PRELIMINARY: 7/24/2013	
DATE OF FINAL: 4/24/2015	
SHEET NO. 17 OF 19 SHEETS	
PROJECT NUMBER 08-6011.01	



208 East Main Street, Suite 100
Belleville, Illinois 62220
618.233.3877 Fax
618.233.3977 Jax
www.kaskaskiaeng.com



PREPARED BY:

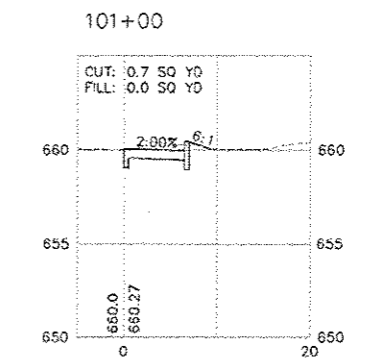
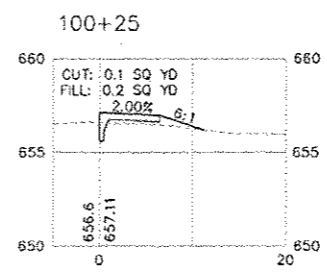
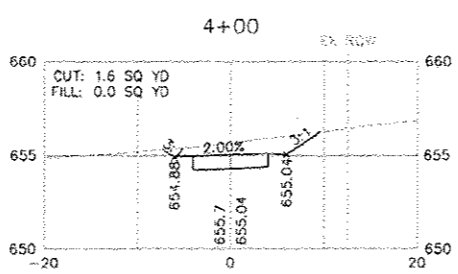
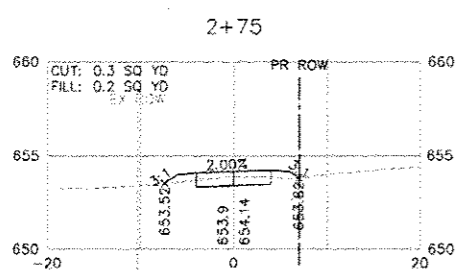
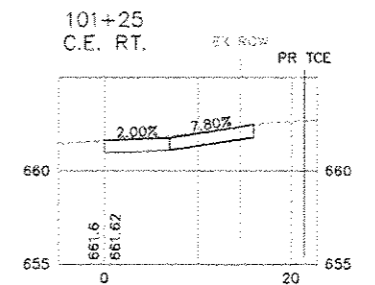
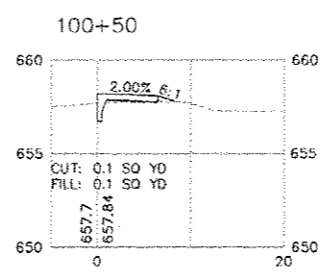
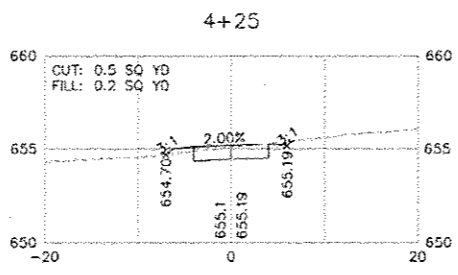
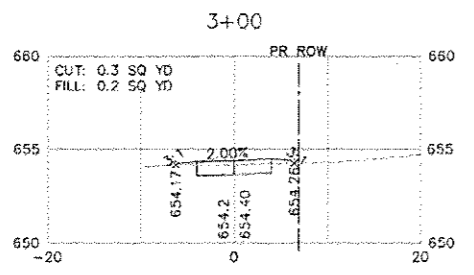
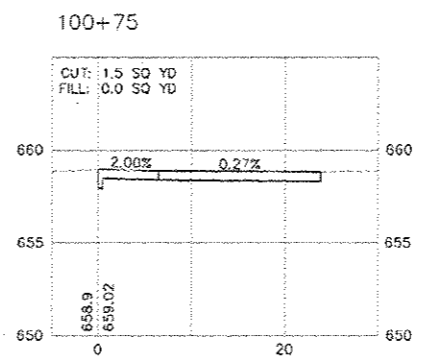
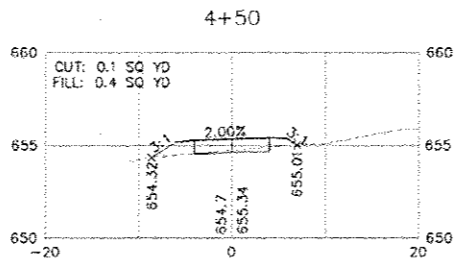
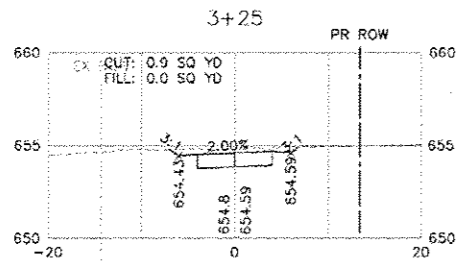
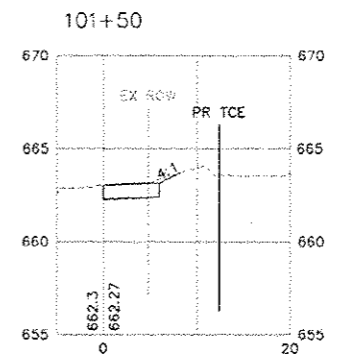
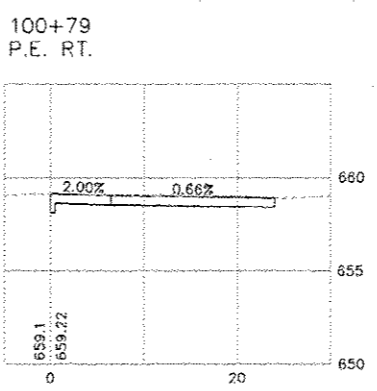
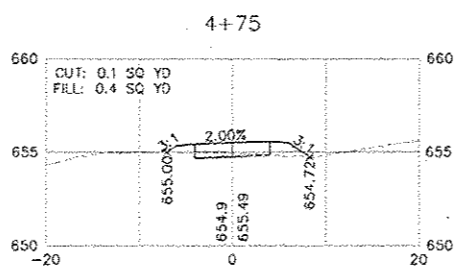
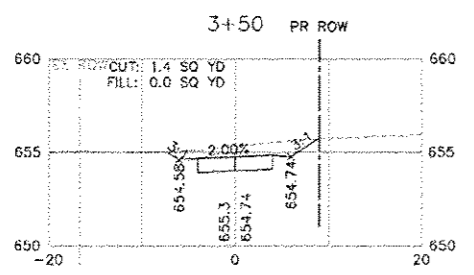
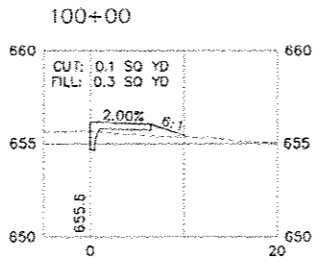
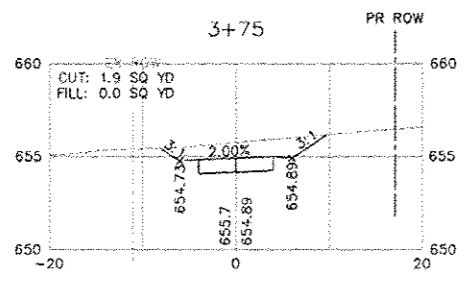
CONTRACT NO. 97540
SEC. NO. 10-00012-00-BT

REV.	DATE	DESCRIP
△		
△		
△		
△		
△		

SHEET TITLE:
CROSS SECTIONS
SHARED USE PATH
SEIBERT DR. TO DIAMOND CT.

PROJECT TITLE:
SHILOH SAFE ROUTES TO SCHOOL
VILLAGE OF SHILOH
ST. CLAIR COUNTY, IL

DESIGNED BY: SMS	SHEET
DRAWN BY: JLT	
CHECKED BY: DWK	18
DATE OF PRELIMINARY: 7/24/2013	
DATE OF FINAL: 4/23/2015	
SHEET NO. 18 OF 19 SHEETS	
PROJECT NUMBER 08-0013.01	



208 East Main Street, Suite 100
 Bellville, Illinois 62220
 618.233.8777 phone
 618.233.8777 fax
 www.kaskaskiaeng.com

Kaskaskia
 Engineering Group, LLC

PROFESSIONAL REGISTRATIONS
 Illinois Professional Design Firm
 Professional Engineering Group

CONTRACT NO. 97540
 SEC. NO. 10-00012-00-BT

REV	DATE	DESCRIP
△		
△		
△		
△		
△		

SHEET TITLE:
 CROSS SECTIONS
 SHARED USE PATH
 SEIBERT DR. TO DIAMOND CT.

PROJECT TITLE:
 SHILOH SAFE ROUTES TO SCHOOL
 VILLAGE OF SHILOH
 ST. CLAIR COUNTY, IL

DESIGNED BY: SMS	SHEET
DRAWN BY: JLT	19
CHECKED BY: DWK	
DATE OF PRELIMINARY: 7/24/2013	
DATE OF FINAL: 4/24/2015	
SHEET NO. 19 OF 19 SHEETS	
PROJECT NUMBER 08-0013.01	