

## CONSTRUCTION PLANS

# REPAIR OF 300' AT NE END OF TAXIWAY A - CONTRACT 2

**WAUKEGAN PORT DISTRICT  
WAUKEGAN NATIONAL AIRPORT (UGN)  
WAUKEGAN, LAKE COUNTY, ILLINOIS**

**SBG PROJECT NO. 3-17-SBGP-TBD**  
**IDA PROJECT NO. UGN-4225**

[illegible]

# LOCATION MAP

JOYCEVILLE STEPHENSON WINNEBAGO BOONE MAHENRY COOK

CARROLL OGLE DE KALB KANE DU PAGE

WHITESIDE LEE RENDALL WILL COOK

ROCK ISLAND HENRY BUREAU LA SALLE KENDALL

MERCER PUTNAM GRUNDY WILL KANKAKEE

WABASH WABASH STARKE MARSHALL LIVINGSTON KANKAKEE

KNOWLTON PEORIA WOODFORD LIVINGSTON IROQUOIS

HUNCOCK MCDONOUGH FULTON TAZEWELL MCLEAN FORD

SCHUYLER MASON LOSAN DE WITT CHAMPAIGN VERMILION

ADAMS BRIDGEMAN CASE MENARD PIATT DOUGLAS EDGAR

PIKE SCOTT SANGAMON MACON MOULTON COCKES EDGAR

GREENE MACOUPIN MONTGOMERY SHELBY CLARK

JERSEY MAGUIRE FAYETTE EFFINGHAM JASPER CRAWFORD

MAGUIRE BOND CLINTON MARION CLAY RICHLAND LAWRENCE

SHIRT CLAR MONROE WASHINGTON JEFFERSON WAYNE EDWARDS WARREN

RANDOLPH PERRY FRANKLIN HAMILTON WHITE

JACKSON WILLIAMSON SALINE GALLATIN

UNION JOHNSON POPE HARDON

MAHON PULASKI MASAC

0' 240,000' 480,000'

## NOTICE TO CONTRACTORS AND BIDDERS

THESE CONSTRUCTION PLANS RELY UPON THE SPECIAL PROVISIONS AND THE SPECIFICATIONS TO PROVIDE FOR A COMPLETE DESCRIPTION OF THE WORK AND CONSTRUCTION REQUIREMENTS. THE PLANS SHALL ONLY BE USED IN COMBINATION WITH ALL CONTRACT DOCUMENTS.

ITEM NAME/NO LONG				
No.	Issue/Description	Sheets Changed	Date	By

Seal

KEVIN M. SPITZ  
062-032192  
LICENSED  
PROFESSIONAL  
ENGINEER  
STATE OF ILLINOIS

Date of Plans

June 5, 2015

Kevin M. Spitz,  
Project Engineer

Date


 **HANSON**  
HANSON PROFESSIONAL SERVICES INC.  
815 Commerce Drive, Suite 200 Oak  
Brook, Illinois 60023  
Telephone: 630.990.3800  
Fax: 630.990.3801




---

Ronald M. Hudson, AICP  
Project Manager

**June 5, 2015**  
Date

 WAUKEGAN NATIONAL AIRPORT  
WAUKEGAN PORT DISTRICT  
2601 Plane Rest Drive  
Waukegan, Illinois 60087  
Telephone: 847.244.0055  
Fax: 847.244.3813

 **June 5, 2015**

James P. Stanczak  
Airport Manager

Date \_\_\_\_\_

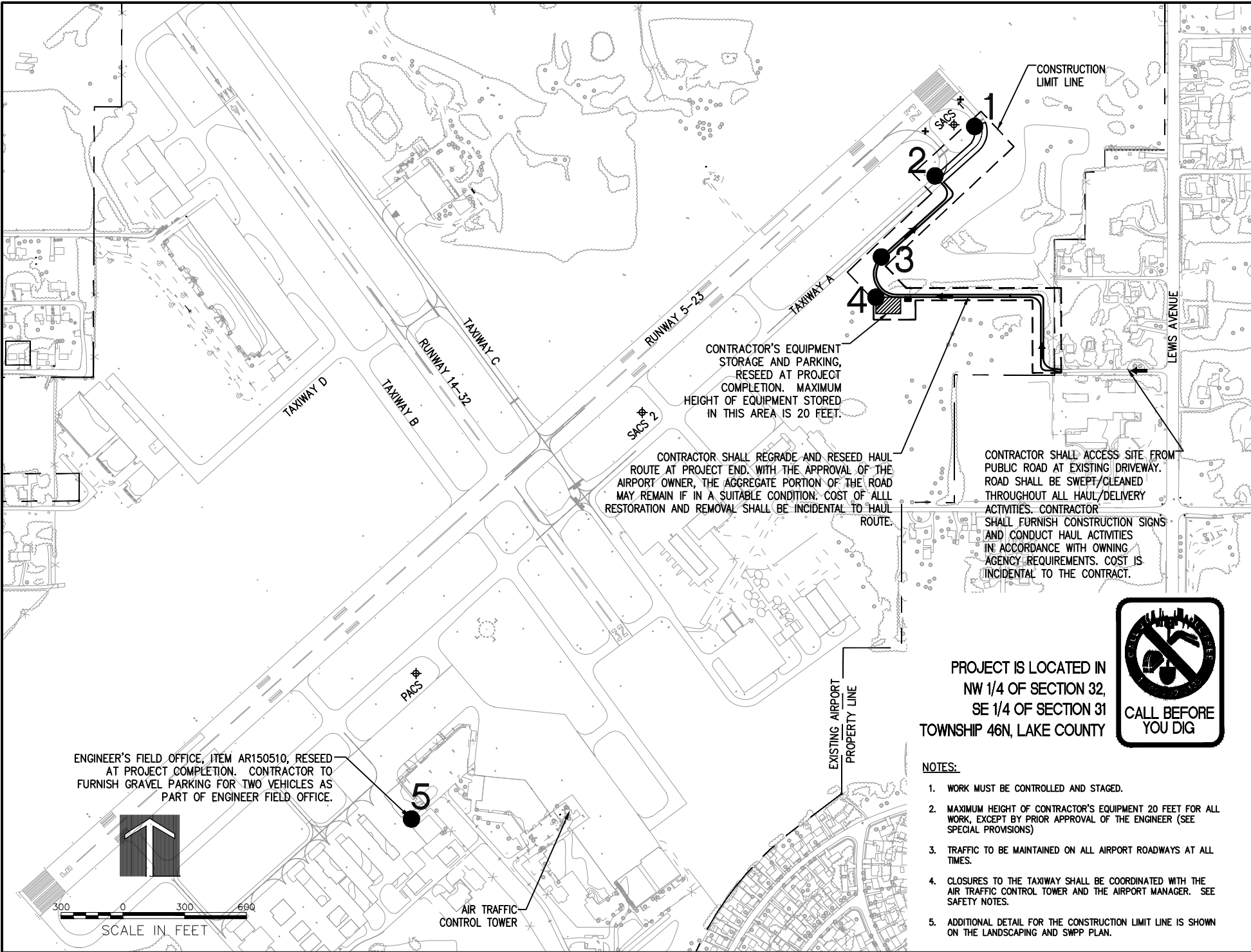
SUMMARY OF QUANTITIES				
ITEM NO.	DESCRIPTION	UNIT	AS BID	RECORD PAID
AR150510	ENGINEER'S FIELD OFFICE	LUMP SUM	1.0	
AR150530	TRAFFIC MAINTENANCE	LUMP SUM	1.0	
AR150540	HAUL ROUTE	LUMP SUM	1.0	
AR152410	UNCLASSIFIED EXCAVATION	CUBIC YARD	673.0	
AR156510	SILT FENCE	LINEAR FOOT	1,148.0	
AR156520	INLET PROTECTION	EACH	4.0	
AR156531	EROSION CONTROL BLANKET	SQAURE YARD	623.0	
AR209605	CRUSHED AGG. BASE COURSE - 5"	SQUARE YARD	2,129.0	
AR302611	ASPHALT TREATED PERMEABLE SUBBASE	SQUARE YARD	2,129.0	
AR302630	ATPS TEST SECTION	EACH	1.0	
AR501508	8" PCC PAVEMENT	SQUARE YARD	2,068.0	
AR501530	PCC TEST BATCH	EACH	1.0	
AR501665	PCC PAVEMENT SAWING	LINEAR FOOT	278.0	
AR501900	REMOVE PCC PAVEMENT	SQUARE YARD	2,045.0	
AR602510	BITUMINOUS PRIME COAT	GALLONS	639.0	
AR620520	PAVEMENT MARKING - WATERBORNE	SQUARE FOOT	382.0	
AR620525	PAVEMENT MARKING - BLACK BORDER	SQUARE FOOT	1,186.0	
AR620530	PAVEMENT MARKING - EPOXY	SQUARE FOOT	695.0	
AR620590	TEMPORARY MARKING	SQUARE FOOT	550.0	
AR620900	PAVEMENT MARKING REMOVAL	SQUARE FOOT	550.0	
AR901510	SEEDING	ACRE	0.2	
AR905520	TOPSOILING (FROM OFF SITE)	CUBIC YARD	69.0	

PAYMENT WILL BE MADE UNDER THE ITEM NUMBERS, DESCRIPTIONS AND UNITS NOTED IN THE ABOVE TABLE IN ACCORDANCE WITH THE BASIS OF PAYMENT FOR EACH RESPECTIVE WORK ITEM NOTED IN THE SPECIAL PROVISIONS, COMPLETED AND ACCEPTED BY THE ENGINEER.

[illegible]

## SHEET INDEX AND SUMMARY OF QUANTITIES





## GENERAL NOTES

### PROJECT DESCRIPTION

THIS PROJECT IS TO REPAIR A 300' LENGTH OF THE NORTHEAST END OF TAXIWAY A AT WAUKEGAN NATIONAL AIRPORT INCLUDING, AMONG OTHER INCIDENTAL WORK, THE FOLLOWING ITEMS:

- PLACEMENT OF TEMPORARY EROSION CONTROL MEASURES.
- PROVISION OF TRAFFIC MAINTENANCE AND HAUL ROUTE.
- FULL DEPTH REMOVAL & PROVISION OF REQUIRED UNCLASSIFIED EXCAVATION
- RECONSTRUCTION OF PCC PAVEMENTS AND STABILIZED SUBBASE.
- PLACEMENT OF PAVEMENT MARKINGS
- GRADE, TOPSOIL, AND SEED AND COVER WITH EROSION CONTROL BLANKET OUTSIDE OF PAVED AREAS.

### PROTECTION OF EXISTING AIRPORT FACILITIES

THE CONTRACTOR IS TO BE RESPONSIBLE FOR THE PROTECTION OF EXISTING UNDERGROUND AND OVERHEAD UTILITIES AND LIGHTING EQUIPMENT; DRIVEWAY AND ROAD PAVEMENT AND SHOULDERS; RUNWAY, TAXIWAY AND APRON PAVEMENTS AND SHOULDERS; RUNWAY, TAXIWAY AND AIRPORT LIGHTING EQUIPMENT; AND SEEDED AND TURFED AREAS THAT ARE UTILIZED IN OR AFFECTED BY THE CONTRACTOR'S ACTIVITIES. ITEMS DAMAGED BY THE CONTRACTOR ARE TO BE REPAIRED AT CONTRACTOR'S EXPENSE AND TO THE SATISFACTION OF AIRPORT MANAGER AND THE OWNER'S REPRESENTATIVE.

IN ADDITION WHEN CONDITIONS DICTATE OR AS DETERMINED BY THE AIRPORT MANAGER OR THE OWNER'S REPRESENTATIVE, THE CONTRACTOR SHALL BE REQUIRED TO USE A PICK-UP TYPE SWEEPER IN ALL ACTIVE CONSTRUCTION PAVEMENT AREAS. THE CONTRACTOR WILL BE REQUIRED TO HAVE A SWEEPER AVAILABLE FOR USE AT ALL TIMES. THE COST OF SWEEPING SHALL BE CONSIDERED INCIDENTAL TO THE CONTRACT.

THE CONTRACTOR SHALL BE RESPONSIBLE FOR CONTACTING THE FAA (SMO) THROUGH THE RESIDENT ENGINEER TO LOCATE ALL FAA CABLES ON THE PROJECT SITE. ALL FAA CABLES SHALL BE PROTECTED AT ALL TIMES.

### CONTRACTOR'S ACCESS AND TEMPORARY FACILITIES

CONTRACTOR'S ACCESS TO THE PROJECT WHEN ON AIRPORT PROPERTY IS SHOWN ON THIS SHEET. CONTRACTOR'S ACCESS TO THE AIRPORT ITSELF IS TO BE PROVIDED BY PUBLIC RIGHTS-OF-WAY. THE CONTRACTOR IS TO SECURE ALL NECESSARY PERMITS FOR THE USE OF ANY PUBLIC RIGHTS-OF-WAY AND IS TO MAINTAIN TRAFFIC ON THESE PUBLIC ROADS AT ALL TIMES, WITH THE COSTS OF PERMITTING, CLEANING AND REPAIRING OF PAVEMENT DAMAGED BY CONTRACTOR'S ACTIVITIES INCIDENTAL TO THE CONTRACT. USE OF AND REPAIRS TO ANY PUBLIC FACILITIES ARE TO BE COMPLETED TO THE SATISFACTION OF THE FACILITY'S OWNER.

THE CONTRACTOR IS TO PROVIDE TEMPORARY CONSTRUCTION ROADS WITHIN THE CONSTRUCTION LIMIT LINES AS MAY BE REQUIRED BY HIS ACTIVITIES. HEAVY VEHICLES SHALL NOT CROSS EXISTING PAVEMENT SURFACES EXCEPT AS APPROVED BY THE AIRPORT MANAGER AND THE OWNER'S REPRESENTATIVE. ANY DAMAGE TO PAVEMENTS THAT MAY OCCUR BY THE CONTRACTOR'S ACTIVITIES SHALL BE REPAIRED AT THE CONTRACTOR'S EXPENSE AND TO THE SATISFACTION OF THE AIRPORT MANAGER AND THE OWNER'S REPRESENTATIVE. FOR HAUL ROUTES MADE BY CONTRACTOR THROUGH GRASSED AREAS, CONTRACTOR SHALL GRADE, LEVEL, TOPSOIL, SEE AND MULCH AT THE END OF THE PROJECT, COST INCIDENTAL TO THE CONTRACT.

THE CONTRACTOR IS TO PROVIDE AN EQUIPMENT, STORAGE AND PARKING AREA AT THE LOCATION SHOWN ON THIS SHEET. IT IS THE CONTRACTOR'S RESPONSIBILITY TO MAINTAIN THE ACCESS ROADS AND THE STORAGE AREA DURING CONSTRUCTION AND TO RESTORE THE AREAS AT PROJECT COMPLETION TO CONDITIONS SUITABLE TO THE AIRPORT MANAGER AND THE OWNER'S REPRESENTATIVE. AT THE AIRPORT MANAGER'S DISCRETION, THE TEMPORARY FACILITIES MAY REMAIN, BUT THEY MUST BE LEFT IN CONDITIONS SUITABLE TO THE AIRPORT MANAGER. THE COST OF PROVIDING, MAINTAINING AND RESTORING THE TEMPORARY FACILITIES IS INCIDENTAL TO THE CONTRACT.

### RESPONSIBILITY FOR EXISTING UTILITIES

THE LOCATION, SIZE AND/OR TYPE OF MATERIAL OF EXISTING UNDERGROUND OR OVERHEAD UTILITIES AS MAY BE INDICATED ON THESE CONSTRUCTION PLANS IS NOT REPRESENTED AS BEING ACCURATE, SUFFICIENT OR COMPLETE. NEITHER THE OWNER NOR THE PROJECT ENGINEER HAVE INDEPENDENTLY VERIFIED THIS INFORMATION AND NEITHER ASSUMES ANY RESPONSIBILITY WHATSOEVER IN RESPECT TO THE ACCURACY, SUFFICIENCY OR COMPLETENESS OF THE INFORMATION AND GIVE NO EXPRESSED OR IMPLIED GUARANTEE THAT ANY CONDITIONS INDICATED ARE REPRESENTATIVE OF ACTUAL CONDITIONS TO BE ENCOUNTERED.

IT SHALL BE THE CONTRACTOR'S RESPONSIBILITY TO DETERMINE THE ACTUAL LOCATION OF ALL SUCH FACILITIES, INCLUDING SERVICE CONNECTIONS TO UNDERGROUND UTILITIES. PRIOR TO CONSTRUCTION, THE CONTRACTOR SHALL NOTIFY ALL UTILITY COMPANIES AND AGENCIES OF HIS CONSTRUCTION PLANS AND SHALL OBTAIN FROM EACH PARTY DETAILED INFORMATION AND ASSISTANCE RELATIVE TO THE LOCATION OF ALL UTILITIES AND THE WORKING SCHEDULE OF ANY REMOVALS OR ADJUSTMENTS REQUIRED OF THE UTILITY. THE CONTRACTOR SHALL CONTACT J.U.L.I.E. (PHONE 800-892-0123) TO ASSIST IN THE ABOVE.

CONTACT THE FAA (FEDERAL AVIATION ADMINISTRATION) FOR ASSISTANCE IN LOCATING FAA CABLES AND UTILITIES. LOCATION OF FAA POWER, CONTROL, AND COMMUNICATION CABLES SHALL BE COORDINATED WITH AND/OR LOCATED BY THE FAA.

THE CONTRACTOR SHALL PROTECT ANY FACILITIES TO THE SATISFACTION OF THE UTILITY OR OWNING-AGENCY WITH THE COST OF ANY REQUIRED PROTECTION TO BE INCIDENTAL TO THE CONTRACT. IN THE EVENT A UTILITY LINE OR SERVICE IS UNEXPECTEDLY ENCOUNTERED DURING CONSTRUCTION, THE CONTRACTOR SHALL IMMEDIATELY NOTIFY THE OWNER'S REPRESENTATIVE AND THE UTILITY COMPANY OR AGENCY OF JURISDICTION. ANY SUCH UTILITIES DISTURBED BY THE CONTRACTOR'S OPERATIONS SHALL BE RESTORED TO SERVICE IMMEDIATELY.

### AIRPORT SECURITY

THE CONTRACTOR IS TO COORDINATE GATE SECURITY, THROUGH THE RESIDENT ENGINEER, WITH THE AIRPORT MANAGEMENT. AIRPORT SECURITY SHALL BE MAINTAINED AT ALL TIMES.

### EXISTING CONTROL POINTS

PACS: N 2095587.482 SACS 1 N 2098251.587 SACS 2 N 2096854.703  
E 1109729.492 E 1112341.241 E 1110827.340  
ELEV. 705.1 ELEV. 717.6 ELEV. 709.1

RUNWAY END COORDINATES				
DESCRIPTION	LATITUDE	LONGITUDE	STATION	ELEVATION
RUNWAY 5 END	42° 24' 57.0507" N	87° 52' 32.2310" W	100+00.00	725.75
RUNWAY 23 END	42° 25' 36.3758" N	87° 51' 32.3244" W	159+98.70	723.50
RUNWAY 14 END	42° 25' 39.5792" N	87° 52' 22.7232" W	237+49.37	727.97
RUNWAY 14 END	42° 25' 35.5735" N	87° 52' 18.8240" W	232+49.41	728.14

PROJECT IS LOCATED IN  
NW 1/4 OF SECTION 32,  
SE 1/4 OF SECTION 31  
TOWNSHIP 46N, LAKE COUNTY



### NOTES:

1. WORK MUST BE CONTROLLED AND STAGED.
2. MAXIMUM HEIGHT OF CONTRACTOR'S EQUIPMENT 20 FEET FOR ALL WORK, EXCEPT BY PRIOR APPROVAL OF THE ENGINEER (SEE SPECIAL PROVISIONS)
3. TRAFFIC TO BE MAINTAINED ON ALL AIRPORT ROADWAYS AT ALL TIMES.
4. CLOSURES TO THE TAXIWAY SHALL BE COORDINATED WITH THE AIR TRAFFIC CONTROL TOWER AND THE AIRPORT MANAGER. SEE SAFETY NOTES.
5. ADDITIONAL DETAIL FOR THE CONSTRUCTION LIMIT LINE IS SHOWN ON THE LANDSCAPING AND SWPP PLAN.

### NOTES:

1. COORDINATES ARE IN NAD 83 FOR HORIZONTAL AND NAVD 88 FOR VERTICAL.
2. STATIONS, OFFSETS AND ELEVATIONS SHOWN ARE IN FEET.
3. THE APPROACH END OF RUNWAY 5 IS STATION 100+00. THE APPROACH END OF RUNWAY 32 IS STATION 200+00.
4. THE AIRPORT REFERENCE CODE FOR RUNWAY 14-32 IS B-II WITH VISUAL APPROACHES ON BOTH RUNWAY 14 AND RUNWAY 32.
5. THE AIRPORT REFERENCE CODE FOR RUNWAY 5-23 IS D-III WITH NONPRECISION APPROACH GREATER THAN 3/4 MILE FOR RUNWAY 5 AND PRECISION APPROACH TO RUNWAY 23.

OBJECT INFORMATION									
ITEM NO.	DESCRIPTION	MOBILITY	GROUND ELEVATION	OBJECT ELEVATION	LATITUDE	LONGITUDE	RUNWAY 5-23 STATION	RUNWAY 5-23 OFFSET	RUNWAY 5-23 EXIST EL.
1	CONSTRUCTION EQUIPMENT	STATIONARY	718.7	738.7	42° 25' 34.1254" N	87° 51' 30.7223" N	159+38.15	250.2	723.1
2	CONSTRUCTION EQUIPMENT	MOVING	715.5	735.5	42° 25' 31.7653" N	87° 51' 33.3051" N	156+34.72	300.6	721.0
3	HAUL ROUTE	MOVING	706.3	726.3	42° 25' 27.8935" N	87° 51' 36.8110" N	151+77.99	419.5	717.9
4	CONTRACTOR STAGING AREA	STATIONARY	712.0	732.0	42° 25' 25.9647" N	87° 51' 37.1795" N	150+27.81	547.4	716.8
5	ENGINEER'S FIELD OFFICE	STATIONARY	706.1	721.1	42° 25' 01.0673" N	87° 52' 07.4312" N	116+69.17	928.8	710.5

Offices Nationwide  
www.hanson-inc.com

Hanson Professional Services Inc.  
815 Commerce Drive, Suite 200  
Oak Brook, IL 60523  
phone: 630.990.3800  
fax: 630.990.3801

Illinois Licensed  
Professional Service Corporation  
#184-001084



WAUKEGAN NATIONAL AIRPORT  
WAUKEGAN PORT DISTRICT  
2601 Plane Rest Drive  
Waukegan, Illinois 60087  
Telephone: 847.244.0055  
Fax: 847.244.3813

REPAIR OF 300' AT NE  
END OF TAXIWAY A -  
CONTRACT 2

SBG No: 3-17-SBGP-XX  
IDA No: UGN-4225

Contract No. WA070

NO.	DATE	DESCRIPTION		
		DES	DWN	REV

ISSUE: June 4, 2015

PROJECT NO: 14A0153

CAD FILE: 03-SITE PLAN.DWG

DESIGN BY: KMS 04/06/2015

DRAWN BY: KMS 04/06/2015

REVIEWED BY: RMH 06/04/2015

SHEET TITLE

SITE PLAN,  
SAFETY PLAN, &  
GENERAL NOTES

15' (MAX.)

4'

1'

SECURELY STAPLE TO LATH

GROUND LINE

2" YELLOW PLASTIC TAPE

4' LATH DRIVEN INTO GROUND 1'

CONSTRUCTION OF THE PROJECT SHALL BE PERFORMED IN ACCORDANCE WITH THE GUIDELINES SPECIFIED IN FAA ADVISORY CIRCULAR 150/5370-2 (CURRENT ISSUE) AND THE AIRPORT VEHICLE OPERATIONS REGULATIONS (AS PUBLISHED ON THE AIRPORT'S WEBSITE AT [http://www.wakegairport.com/wkg\\_n\\_airport/](http://www.wakegairport.com/wkg_n_airport/)). ANY ACTIVITIES REQUIRED FOR PROJECT SAFETY SHALL BE INCIDENTAL TO THE CONTRACT.

TO MINIMIZE DISRUPTIONS TO AIRPORT OPERATIONS, CONSTRUCTION OPERATIONS MUST BE CONTROLLED THROUGHOUT THE PROJECT'S DURATION AND WORK MUST BE COMPLETED EXPEDITIOUSLY. A CONSTRUCTION PHASING PLAN DETAILING THE SEQUENCING OF THE CONTRACTOR'S WORK THROUGHOUT THE PROJECT SHALL BE FURNISHED TO THE RESIDENT ENGINEER BY THE CONTRACTOR AT THE PRE-CONSTRUCTION CONFERENCE FOR THE REVIEW AND APPROVAL OF THE OWNER AND PROJECT ENGINEER. ANY AND ALL CHANGES TO THE CONSTRUCTION PHASING PLAN THAT IS SUBSEQUENTLY APPROVED THAT MAY BE REQUESTED BY THE CONTRACTOR AFTER PROJECT START MUST BE APPROVED BY THE PROJECT ENGINEER AND THE AIRPORT OWNER. THE CONTRACTOR SHALL BE THE CONTRACTOR'S RESPONSIBILITY TO PROVIDE SUFFICIENT ADVANCE NOTICE OF ANY PROPOSED PHASING CHANGES TO THE PROJECT ENGINEER AND THE AIRPORT OWNER. THE CONTRACTOR SHALL BE ENTITLED TO ANY EXTRA COMPENSATION FOR ANY EXTRA WORK OR EXTENSION TO THE CONTRACT TIME BECAUSE OF A PHASING CHANGE REQUEST NOR FOR ANY OTHER NECESSARY EXTENSION IN RECEIVING THE REQUIRED APPROVALS. THE CONTRACTOR SHALL EXPEDITE WORK AT THOSE PHASES WHEN ACTIVE TAXIWAYS, APRONS, ROADWAYS OR PARKING LOTS MUST BE CLOSED TO MINIMIZE THE LENGTH OF TIME THAT AIRPORT OPERATIONS ARE RESTRICTED.

4



WAUKEGAN NATIONAL AIRPORT  
WAUKEGAN PORT DISTRICT  
2601 Plane Rest Drive  
Waukegan, Illinois 60087  
Telephone: 847.244.0055  
Fax: 847.244.3813

REPAIR OF 300' AT NE  
END OF TAXIWAY A -  
CONTRACT 2

SBG No: 3-17-SBGP-XX  
IDA No: UGN-4225

Contract No. WA070

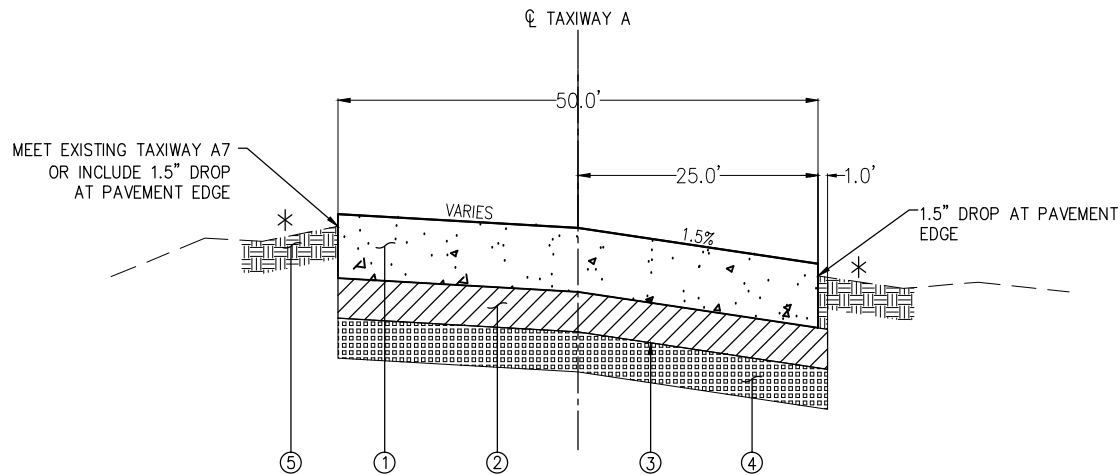
NO.	DATE	DESCRIPTION		
		DES	DWN	REV

ISSUE: June 4, 2015  
PROJECT NO: 14A0153  
CAD FILE: 05-PHASING PLAN.DWG  
DESIGN BY: SJM 02/25/2015  
DRAWN BY: KMS 03/30/2015  
REVIEWED BY: RMH 06/04/2015

SHEET TITLE

## PHASING PLAN

JUN 09, 2015 11:54 AM HAUSM006R2  
I:\14\08514\A01531\40153D\DRAWINGS\SHEETS\06-TYPICAL SECTION.DWG

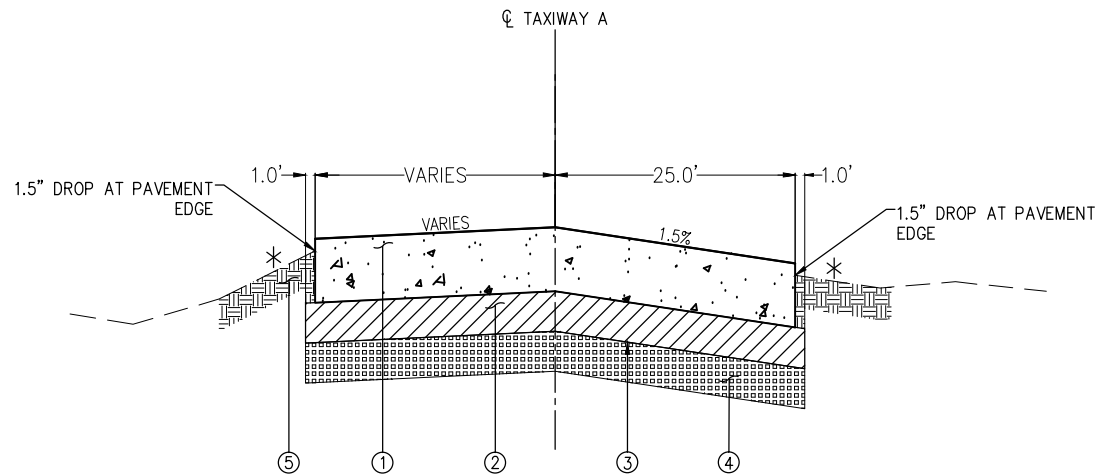


**TYPICAL SECTION - TAXIWAY A**  
**STA. 356+34.75 THRU STA. 358+74.29**  
(SECTION SHOWN LOOKING NORTHEAST)

\* SLOPE AT 3.0% TO MEET EXISTING. IF MEET EXISTING IS GREATER THAN 10 FEET FROM PAVEMENT EDGE, ADJUST SLOPE TO MEET EXISTING AT 10 FEET FROM PAVEMENT EDGE. SEE CROSS SECTIONS.

**LEGEND**

- ① PROPOSED 8" PCC PAVEMENT, ITEM AR501508
- ② PROPOSED 5" ASPHALT TREATED PERMEABLE SUBBASE, ITEM AR302611
- ③ PROPOSED BITUMINOUS PRIME COAT, ITEM AR602510 (0.30 GALLONS PER SQUARE YARD)
- ④ PROPOSED 5" CRUSHED AGGREGATE BASE COURSE, ITEM AR209605
- ⑤ 4" TOPSOIL WITH SEEDING AND EROSION CONTROL BLANKET, ITEMS AR905520, AR901510, AR156531



**TYPICAL SECTION - TAXIWAY A**  
**STA. 358+74.29 THRU STA. 359+94.55**  
(SECTION SHOWN LOOKING NORTH)



Offices Nationwide  
www.hanson-inc.com  
  
Hanson Professional Services Inc.  
815 Commerce Drive, Suite 200  
Oak Brook, IL 60523  
phone: 630.990.3800  
fax: 630.990.3801

Illinois Licensed  
Professional Service Corporation  
#184-001084



WAUKEGAN NATIONAL AIRPORT  
WAUKEGAN PORT DISTRICT  
2601 Plane Rest Drive  
Waukegan, Illinois 60087  
Telephone: 847.244.0055  
Fax: 847.244.3813

REPAIR OF 300' AT NE  
END OF TAXIWAY A -  
CONTRACT 2

SBG No: 3-17-SBGP-XX  
IDA No: UGN-4225

Contract No. WA070

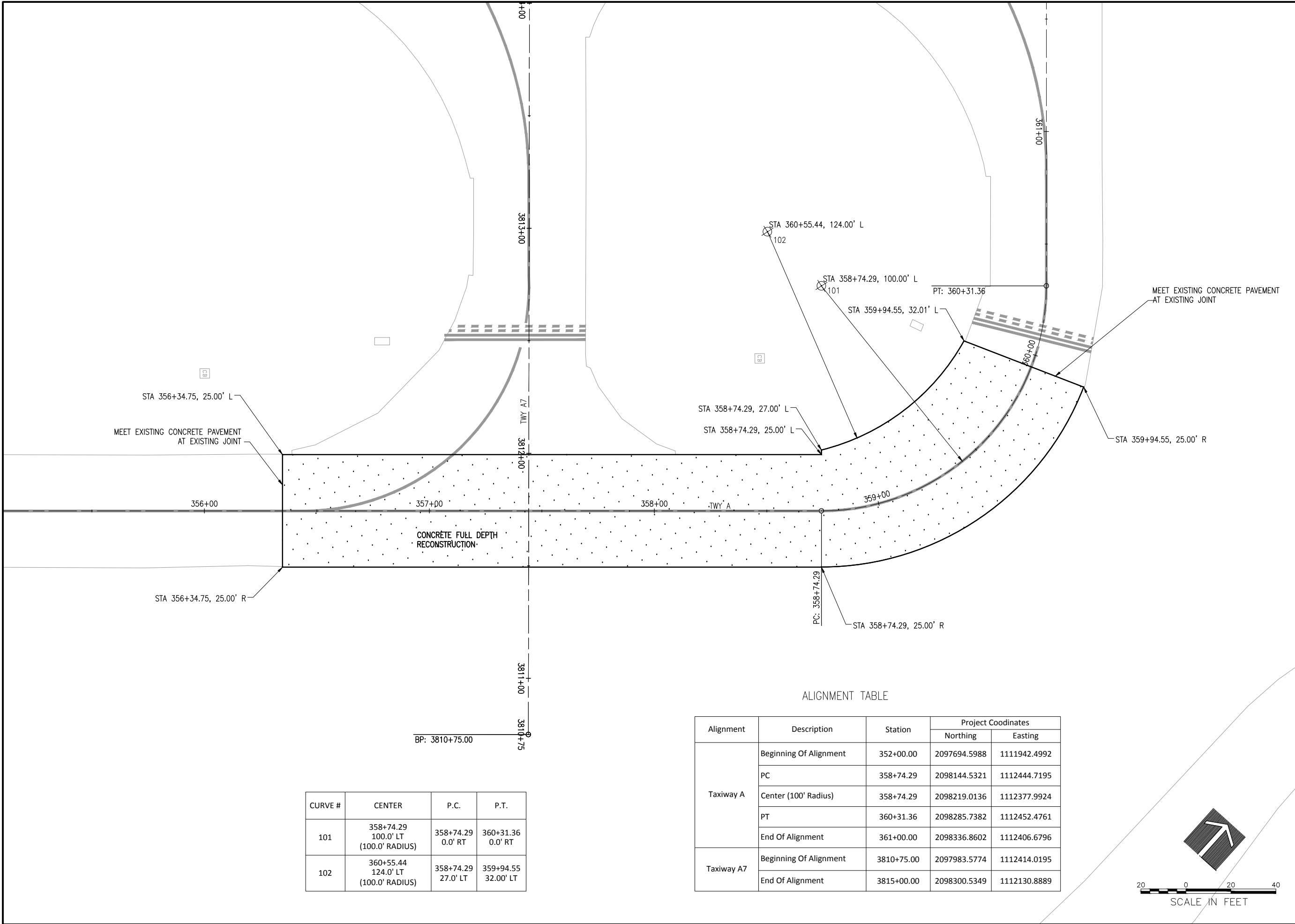
NO.	DATE	DESCRIPTION		
		DES	DWN	REV

ISSUE: June 4, 2015  
PROJECT NO: 14A0153  
CAD FILE: 06-TYPICAL SECTION.DWG  
DESIGN BY: KMS 04/14/2015  
DRAWN BY: KMS 04/14/2015  
REVIEWED BY: RMH 06/04/2015

SHEET TITLE

TYPICAL SECTIONS

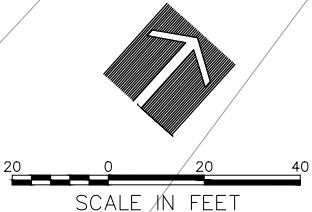
JUN 09, 2015 11:54 AM HAUSM00682  
I:\14\JOBS\14A01531\4A0153D\DRAWINGS\SHEETS\07-ALIGNMENT DATA.DWG



CURVE #	CENTER	P.C.	P.T.
101	358+74.29 100.0' LT (100.0' RADIUS)	358+74.29 0.0' RT	360+31.36 0.0' RT
102	360+55.44 124.0' LT (100.0' RADIUS)	358+74.29 27.0' LT	359+94.55 32.00' LT

ALIGNMENT TABLE

Alignment	Description	Station	Project Coordinates	
			Northing	Easting
Taxiway A	Beginning Of Alignment	352+00.00	2097694.5988	1111942.4992
	PC	358+74.29	2098144.5321	1112444.7195
	Center (100' Radius)	358+74.29	2098219.0136	1112377.9924
	PT	360+31.36	2098285.7382	1112452.4761
	End Of Alignment	361+00.00	2098336.8602	1112406.6796
Taxiway A7	Beginning Of Alignment	3810+75.00	2097983.5774	1112414.0195
	End Of Alignment	3815+00.00	2098300.5349	1112130.8889



Offices Nationwide  
www.hanson-inc.com  
  
Hanson Professional Services Inc.  
815 Commerce Drive, Suite 200  
Oak Brook, IL 60523  
phone: 630.990.3800  
fax: 630.990.3801

Illinois Licensed  
Professional Service Corporation  
#184-001084



WAUKEGAN NATIONAL AIRPORT  
WAUKEGAN PORT DISTRICT  
2601 Plane Rest Drive  
Waukegan, Illinois 60087  
Telephone: 847.244.0055  
Fax: 847.244.3813

REPAIR OF 300' AT NE  
END OF TAXIWAY A -  
CONTRACT 2

SBG No: 3-17-SBGP-XX  
IDA No: UGN-4225

Contract No. WA070

NO.	DATE	DESCRIPTION		
		DES	DWN	REV

ISSUE: June 4, 2015  
PROJECT NO: 14A0153  
CAD FILE: 07-ALIGNMENT DATA.DWG  
DESIGN BY: SJM 02/25/2015  
DRAWN BY: KMS 04/07/2015  
REVIEWED BY: RMH 06/04/2015

SHEET TITLE

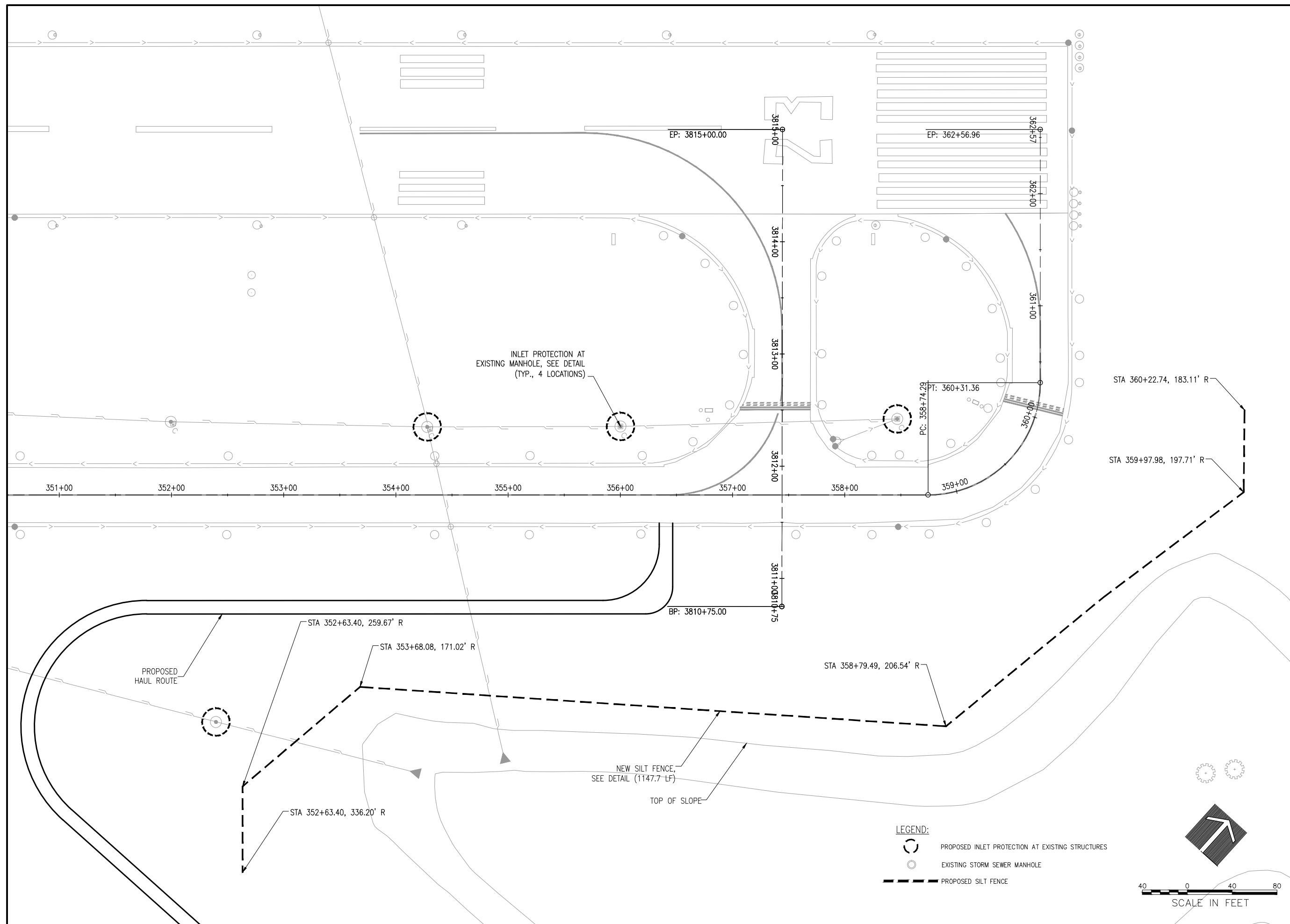
ALIGNMENT DATA &  
PAVEMENT LAYOUT



Contract No. WA070

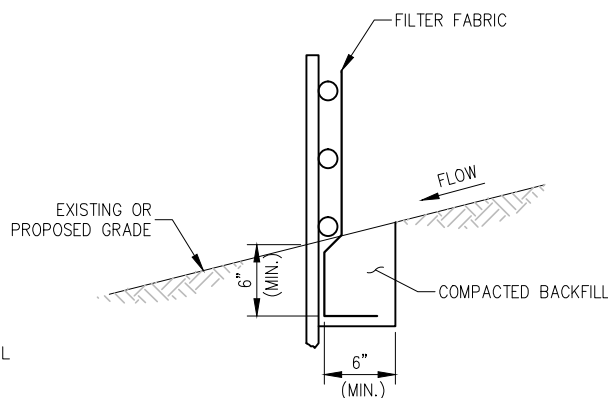
ISSUE: June 4, 2015  
PROJECT NO: 14A0153  
CAD FILE: 08-SWPPP.DWG  
DESIGN BY: SJM 02/25/2015  
DRAWN BY: KMS 03/30/2015  
REVIEWED BY: RMH 06/04/2015

# STORMWATER POLLUTION PREVENTION PLAN



JUN 09, 2015 11:55 AM HAUSM00682  
V14\JOBS\14A0153\14A0153\DRAWINGS\SHIELDS\08-SWPPP DWG





5' MAX  
SEE NOTE 7

WIRE FABRIC  
6" SQUARE MAX

NO. 9 (MIN.) WIRE  
FASTENER, 4 PER POST  
(TYP.)

STEEL POST OR  
HARDWOOD POST  
(SEE NOTE 1)

30" (MIN.)

6" (MIN.)

18"

EXISTING OR  
PROPOSED GRADE

FILTER FABRIC, WOVEN  
OR NON-WOVEN

Diagram illustrating the construction of a sandbag barrier wall for a trench or pit.

**Left View (Top-down):**

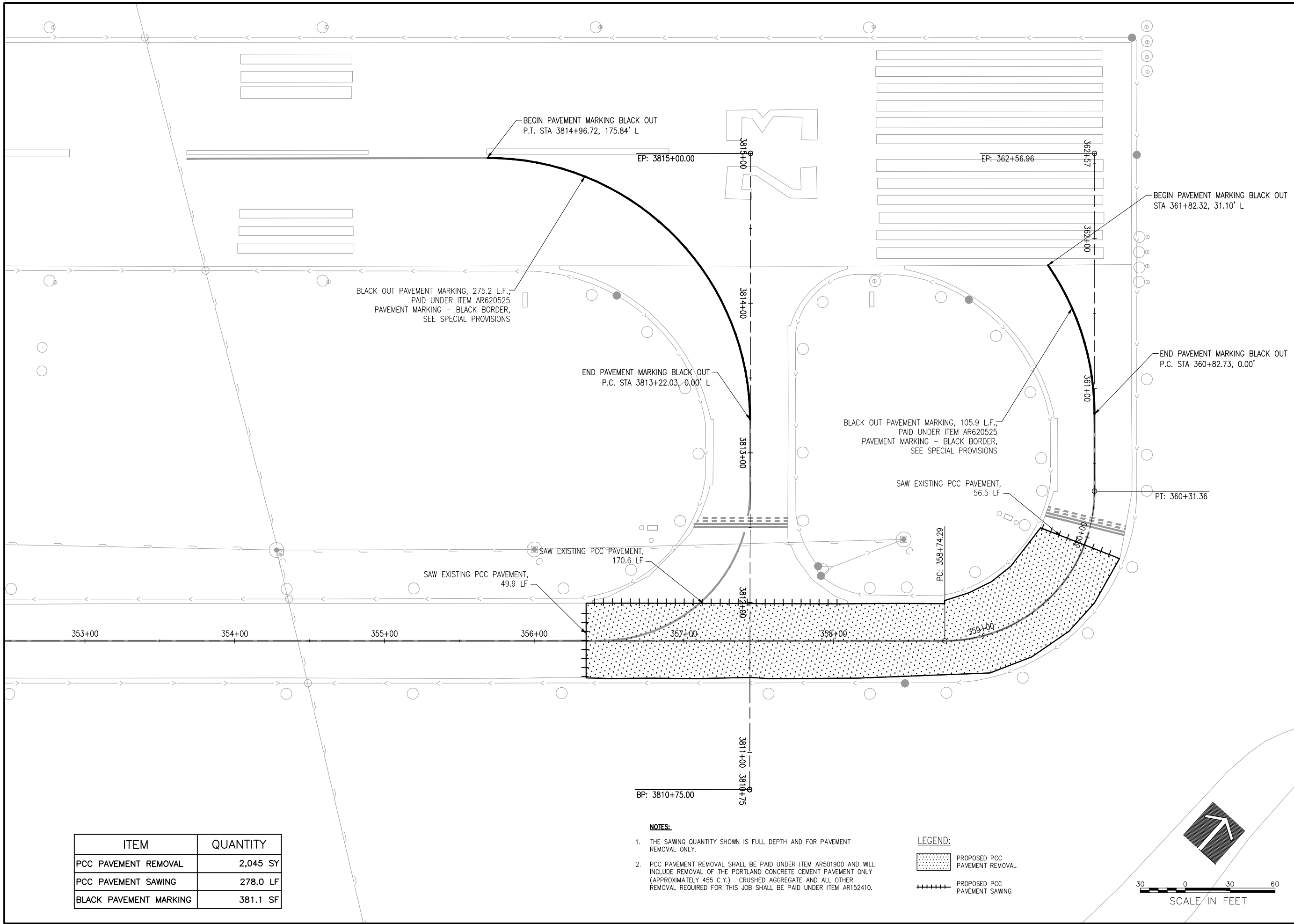
- Barrier wall dimensions: 10' MIN. width and 10' MIN. height.
- Material: 30-MIL POLYETHYLENE.
- Construction: Sandbags are placed along the top and bottom edges of the barrier wall.
- Anchor: SANDBAG (ANCHOR EVERY 2' ON TOP OF BARRIER).

**Right View (Cross-section):**

- Barrier wall height: 3' MIN.
- Top width: 10'.
- Material: 30-MIL POLYETHYLENE.
- Construction: Sandbags are placed along the top and bottom edges of the barrier wall.
- Location: INTERIOR OF PIT and EXTERIOR OF PIT.
- Foundation: LEVEL NATIVE SOIL.

NO.	DATE	DESCRIPTION		
		DES	DWN	REV

JUN 09, 2015 11:55 AM HAUSM00682  
I:\14\JOBS\14A01531\4A0153D\DRAWINGS\SHEETS\10-REMOVAL PLAN.DWG


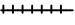


ITEM	QUANTITY
PCC PAVEMENT REMOVAL	2,045 SY
PCC PAVEMENT SAWING	278.0 LF
BLACK PAVEMENT MARKING	381.1 SF

NOTES:

1. THE SAWING QUANTITY SHOWN IS FULL DEPTH AND FOR PAVEMENT REMOVAL ONLY.
2. PCC PAVEMENT REMOVAL SHALL BE PAID UNDER ITEM AR501900 AND WILL INCLUDE REMOVAL OF THE PORTLAND CONCRETE CEMENT PAVEMENT ONLY (APPROXIMATELY 455 C.Y.). CRUSHED AGGREGATE AND ALL OTHER REMOVAL REQUIRED FOR THIS JOB SHALL BE PAID UNDER ITEM AR152410.

LEGEND:

-  PROPOSED PCC PAVEMENT REMOVAL
-  PROPOSED PCC PAVEMENT SAWING



Offices Nationwide  
www.hanson-inc.com

Hanson Professional Services Inc.  
815 Commerce Drive, Suite 200  
Oak Brook, IL 60523  
phone: 630.990.3800  
fax: 630.990.3801

Illinois Licensed  
Professional Service Corporation  
#184-001084



WAUKEGAN NATIONAL AIRPORT  
WAUKEGAN PORT DISTRICT  
2601 Plane Rest Drive  
Waukegan, Illinois 60087  
Telephone: 847.244.0055  
Fax: 847.244.3813

REPAIR OF 300' AT NE  
END OF TAXIWAY A -  
CONTRACT 2

SBG No: 3-17-SBGp-XX  
IDA No: UGN-4225

Contract No. WA070

NO.	DATE	DESCRIPTION		
		DES	DWN	REV

ISSUE: June 4, 2015

PROJECT NO: 14A0153

CAD FILE: 10-REMOVAL PLAN.DWG

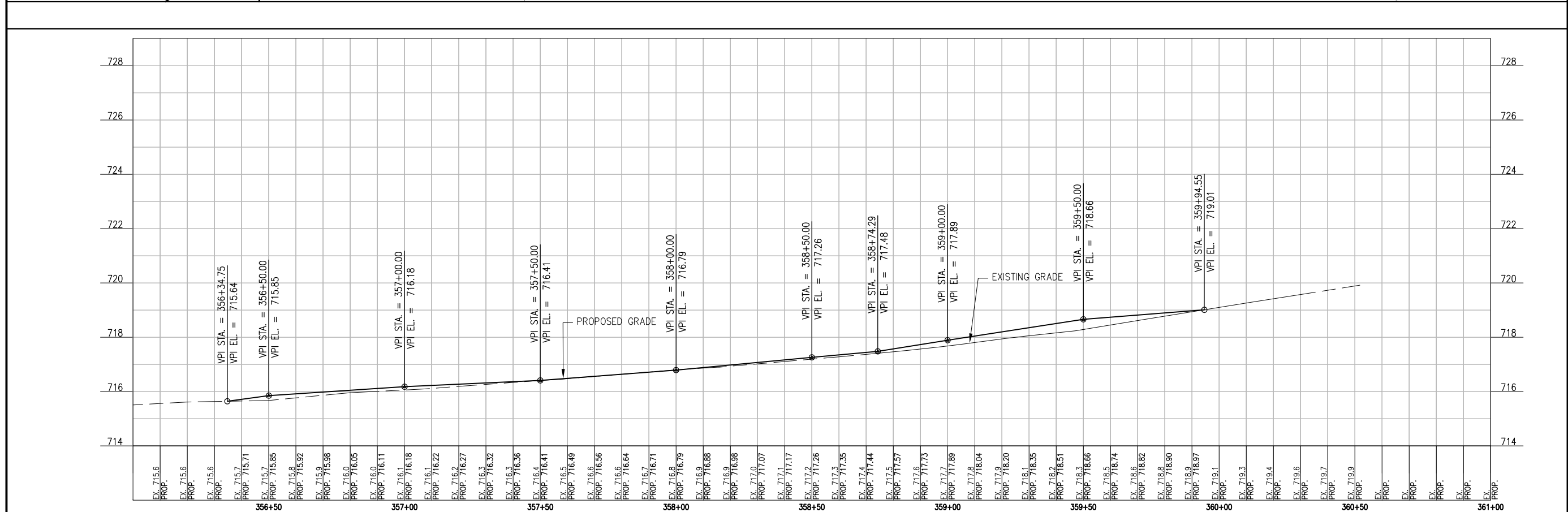
DESIGN BY: SJM 02/25/2015

DRAWN BY: KMS 03/30/2015

REVIEWED BY: RMH 06/04/2015

SHEET TITLE

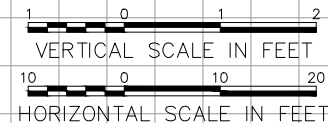
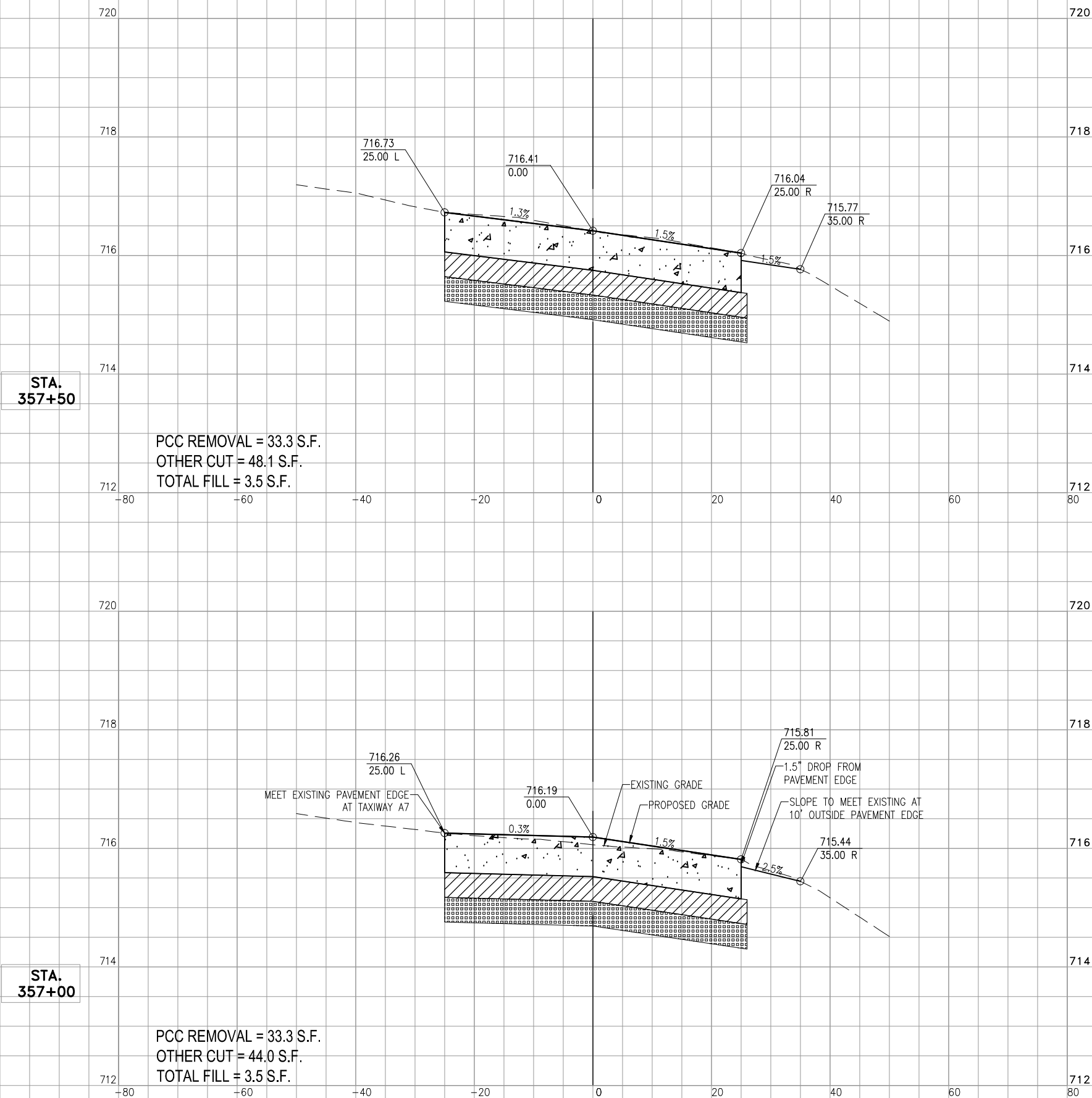
REMOVAL PLAN



## PLAN AND PROFILE



JUN 09, 2015 11:55 AM HAUSM006R2  
I:\14\JOBS\14A0153\14A0153D\DRAWINGS\SHEETS\13-CROSS SECTIONS.DWG



Offices Nationwide  
www.hanson-inc.com

Hanson Professional Services Inc.  
815 Commerce Drive, Suite 200  
Oak Brook, IL 60523  
phone: 630.990.3800  
fax: 630.990.3801

Illinois Licensed  
Professional Service Corporation  
#184-001084



WAUKEGAN NATIONAL AIRPORT  
WAUKEGAN PORT DISTRICT  
2601 Plane Rest Drive  
Waukegan, Illinois 60087  
Telephone: 847.244.0055  
Fax: 847.244.3813

REPAIR OF 300' AT NE  
END OF TAXIWAY A -  
CONTRACT 2

SBG No: 3-17-SBGP-XX  
IDA No: UGN-4225

Contract No. WA070

NO.	DATE	DESCRIPTION		
		DES	DWN	REV

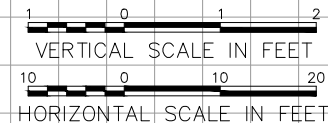
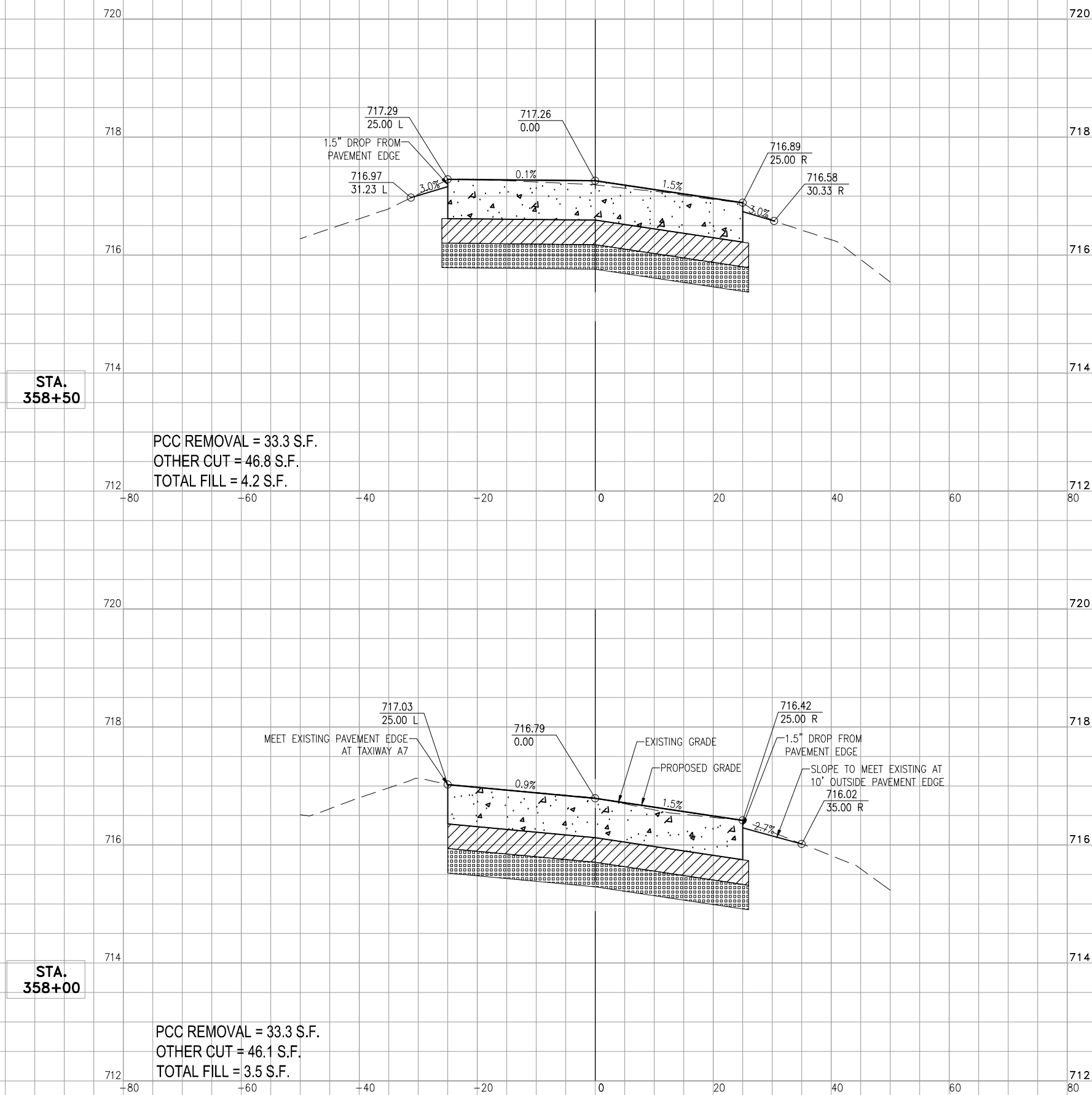
ISSUE: June 4, 2015  
PROJECT NO: 14A0153  
CAD FILE: 13-CROSS SECTIONS.DWG  
DESIGN BY: SJM 02/25/2015  
DRAWN BY: KMS 03/31/2015  
REVIEWED BY: RMH 06/04/2015

SHEET TITLE

CROSS SECTIONS



JUN 09, 2015 11:59 AM HAUSM006R2  
I:\14\JOBS\14A01531\40153D\DRAWINGS\SHEETS\14-CROSS SECTIONS.DWG



Offices Nationwide  
www.hanson-inc.com

Hanson Professional Services Inc.  
815 Commerce Drive, Suite 200  
Oak Brook, IL 60523  
phone: 630.990.3800  
fax: 630.990.3801

Illinois Licensed  
Professional Service Corporation  
#184-001084



WAUKEGAN NATIONAL AIRPORT  
WAUKEGAN PORT DISTRICT  
2601 Plane Rest Drive  
Waukegan, Illinois 60087  
Telephone: 847.244.0055  
Fax: 847.244.3813

REPAIR OF 300' AT NE  
END OF TAXIWAY A -  
CONTRACT 2

SBG No: 3-17-SBGP-XX  
IDA No: UGN-4225

Contract No. WA070

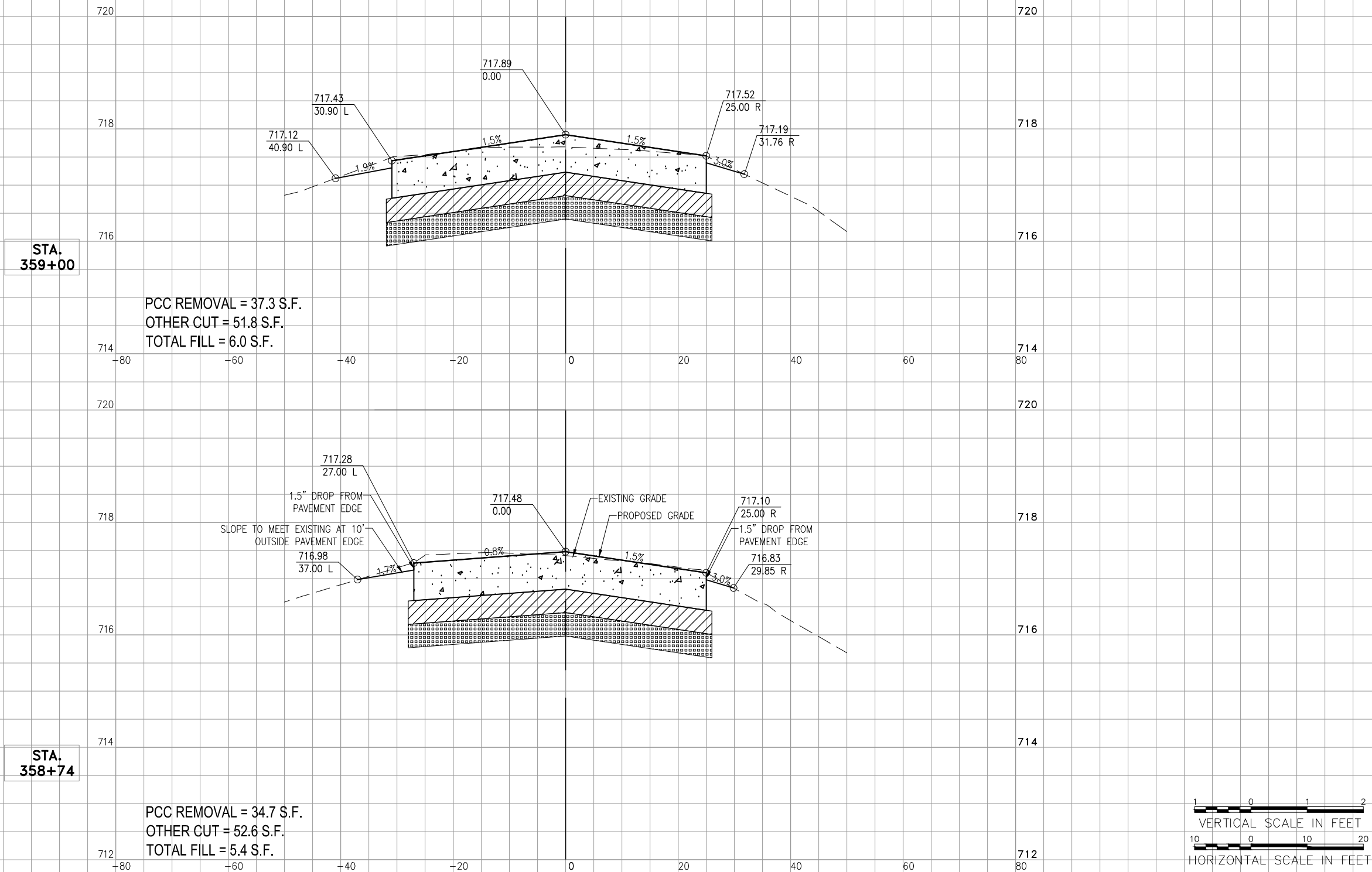
NO.	DATE	DESCRIPTION		
		DES	DWN	REV

ISSUE: June 4, 2015  
PROJECT NO: 14A0153  
CAD FILE: 14-CROSS SECTIONS.DWG  
DESIGN BY: SJM 02/25/2015  
DRAWN BY: KMS 03/31/2015  
REVIEWED BY: RMH 06/04/2015

SHEET TITLE

CROSS SECTIONS

JUN 09, 2015 12:00 PM HAUSM00682  
I:\14\JOBS\14A01531\40153D\DRAWINGS\SHEETS\15-CROSS SECTIONS.DWG



Offices Nationwide  
www.hanson-inc.com

Hanson Professional Services Inc.  
815 Commerce Drive, Suite 200  
Oak Brook, IL 60523  
phone: 630.990.3800  
fax: 630.990.3801

Illinois Licensed  
Professional Service Corporation  
#184-001084



WAUKEGAN NATIONAL AIRPORT  
WAUKEGAN PORT DISTRICT  
2601 Plane Rest Drive  
Waukegan, Illinois 60087  
Telephone: 847.244.0055  
Fax: 847.244.3813

REPAIR OF 300' AT NE  
END OF TAXIWAY A -  
CONTRACT 2

SBG No: 3-17-SBGP-XX  
IDA No: UGN-4225

Contract No. WA070

NO.	DATE	DESCRIPTION		
		DES	DWN	REV

ISSUE: June 4, 2015

PROJECT NO: 14A0153

CAD FILE: 15-CROSS SECTIONS.DWG

DESIGN BY: SJM 02/25/2015

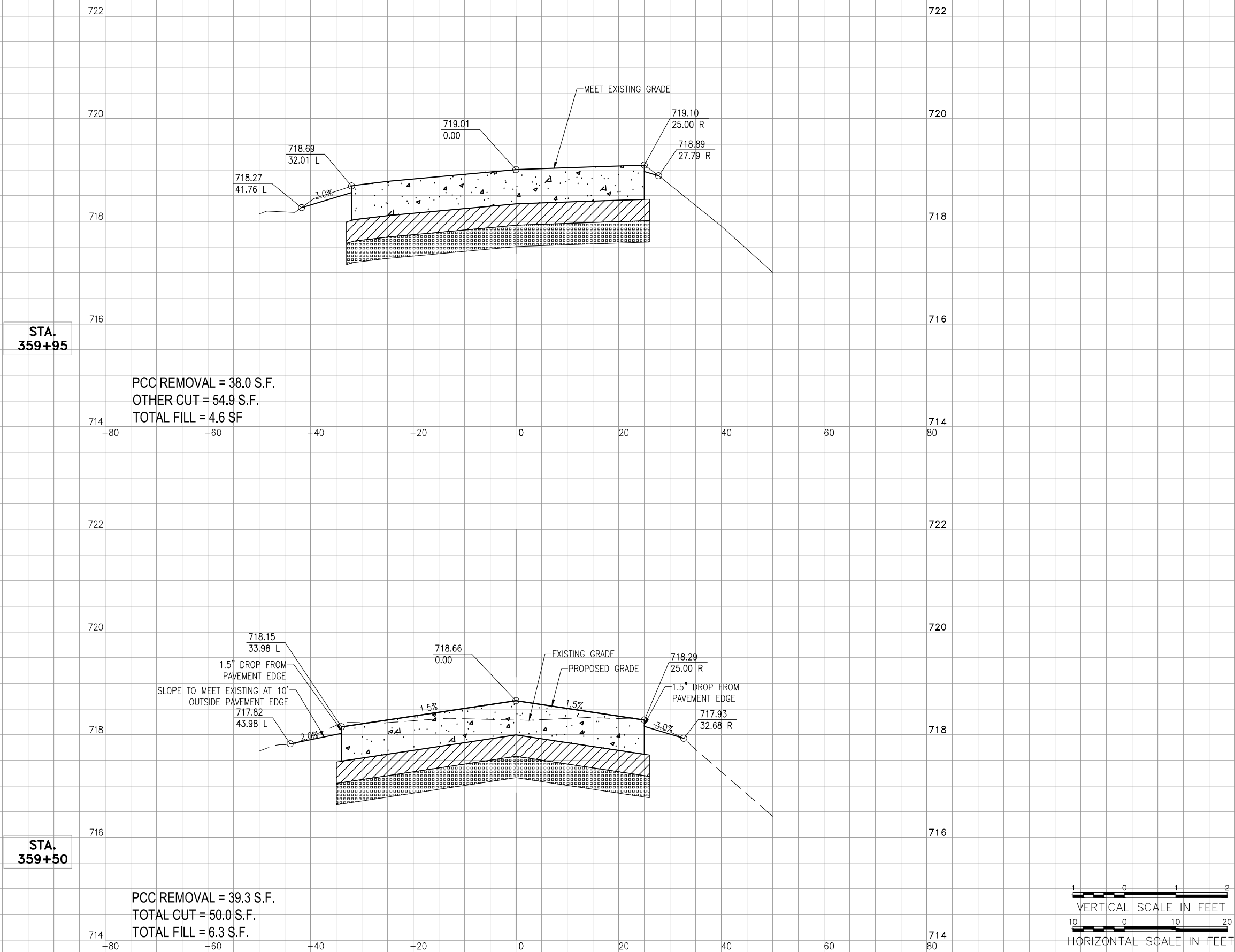
DRAWN BY: KMS 03/31/2015

REVIEWED BY: RMH 06/04/2015

SHEET TITLE

CROSS SECTIONS

JUN 09, 2015 12:01 PM HAUSM00682  
I:\14\JOBS\14A01531\4A0153D\DRAWINGS\SHEETS\16-CROSS SECTIONS.DWG



Offices Nationwide  
www.hanson-inc.com

Hanson Professional Services Inc.  
815 Commerce Drive, Suite 200  
Oak Brook, IL 60523  
phone: 630.990.3800  
fax: 630.990.3801

Illinois Licensed  
Professional Service Corporation  
#184-001084



WAUKEGAN NATIONAL AIRPORT  
WAUKEGAN PORT DISTRICT  
2601 Plane Rest Drive  
Waukegan, Illinois 60087  
Telephone: 847.244.0055  
Fax: 847.244.3813

REPAIR OF 300' AT NE  
END OF TAXIWAY A -  
CONTRACT 2

SBG No: 3-17-SBGP-XX  
IDA No: UGN-4225

Contract No. WA070

NO.	DATE	DESCRIPTION		
		DES	DWN	REV

ISSUE: June 4, 2015  
PROJECT NO: 14A0153  
CAD FILE: 16-CROSS SECTIONS.DWG  
DESIGN BY: SJM 02/25/2015  
DRAWN BY: KMS 03/31/2015  
REVIEWED BY: RMH 06/04/2015

SHEET TITLE

CROSS SECTIONS



REPAIR OF 300' AT NE  
END OF TAXIWAY A -  
CONTRACT 2

SBG No: 3-17-SBGP-XX  
IDA No: UGN-4225

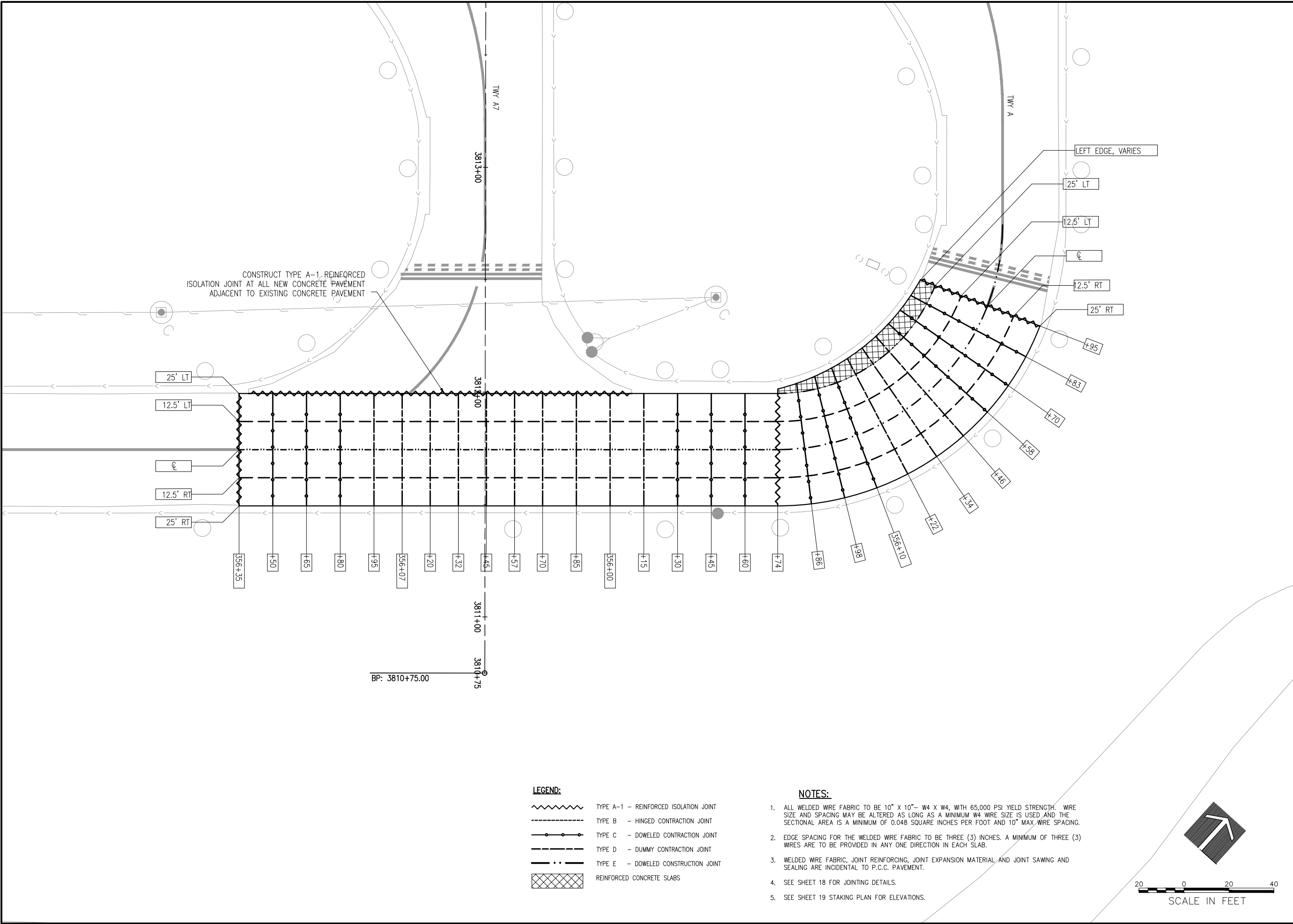
Contract No. WA070

NO.	DATE	DESCRIPTION		
		DES	DWN	REV

ISSUE: June 4, 2015  
PROJECT NO: 14A0153  
CAD FILE: 17-JOINTING PLAN.DWG  
DESIGN BY: SJM 02/25/2015  
DRAWN BY: KMS 03/31/2015  
REVIEWED BY: RMH 06/04/2015

SHEET TITLE

JOINTING PLAN

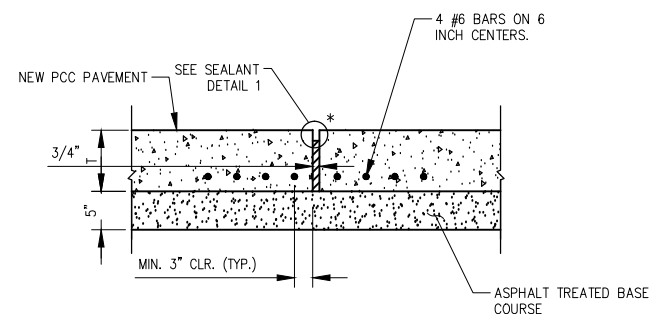


Hanson Professional Services Inc.  
815 Commerce Drive, Suite 200  
Oak Brook, IL 60523  
phone: 630.990.3800  
fax: 630.990.3801

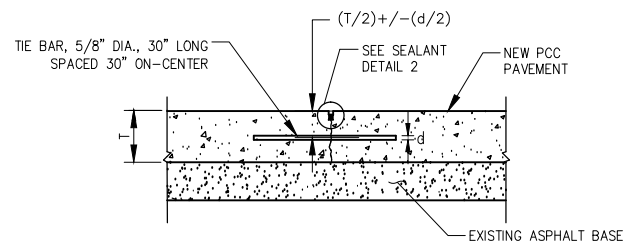
Illinois Licensed  
Professional Service Corporation  
#184-001084



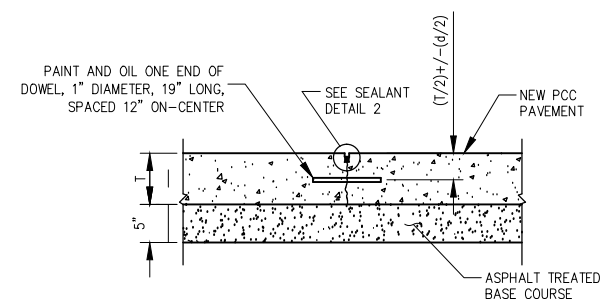
WAUKEGAN NATIONAL AIRPORT  
WAUKEGAN PORT DISTRICT  
2601 Plane Rest Drive  
Waukegan, Illinois 60087  
Telephone: 847.244.0055  
Fax: 847.244.3813



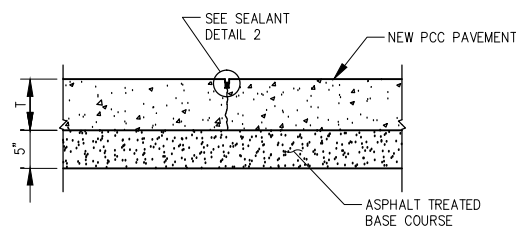
### TYPE A-1 - REINFORCED ISOLATION JOINT



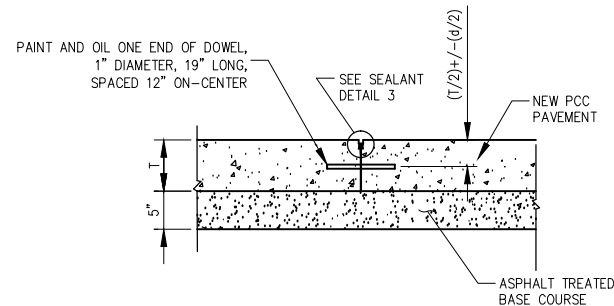
TYPE B - HINGED  
CONTRACTION JOINT



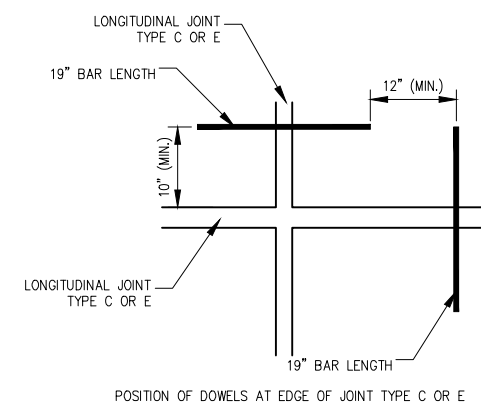
### TYPE C - DOWELED CONTRACTION JOINT



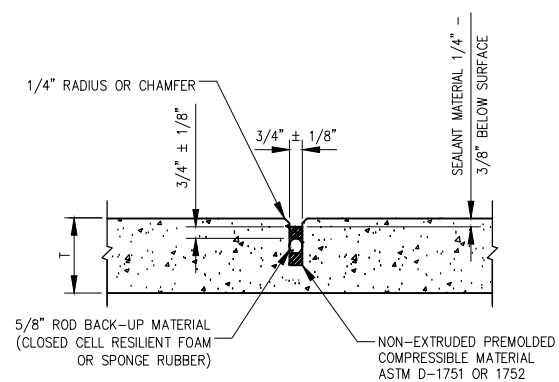
### TYPE D - DUMMY CONTRACTION JOINT



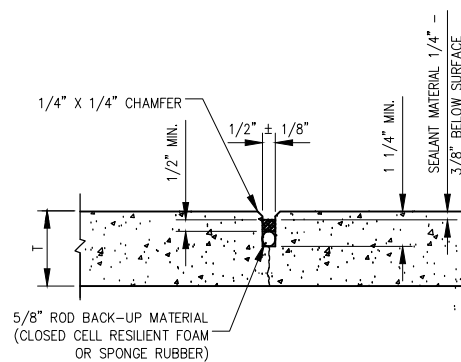
### TYPE E - DOWELED CONSTRUCTION JOINT



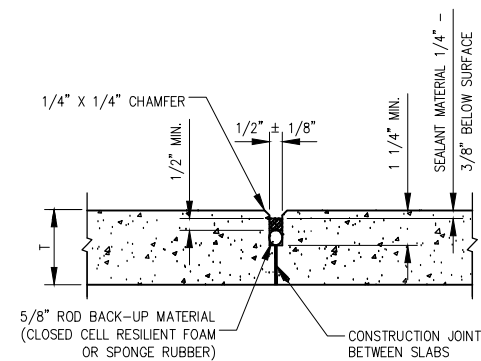
DOWEL PLAN VIEW



### DETAIL 1 - SEALANT



### DETAIL 2 - SEALANT



### DETAIL 3 - SEALANT

NOTE: "T" = 8 INCHES

REPAIR OF 300' AT NE  
END OF TAXIWAY A -  
CONTRACT 2

SBG No: 3-17-SBGP-XX  
IDA No: UGN-4225

Contract No. WA070

NO.	DATE	DESCRIPTION		
		DES	DWN	REV

ISSUE: June 4, 2015

PROJECT NO: 14A0153

CAD FILE: 18-JOINTING DETAILS.DWG

DESIGN BY: SJM 02/25/2015

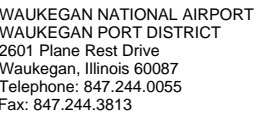
DRAWN BY: KMS 04/01/2015

REVIEWED BY: RMH 06/04/2015

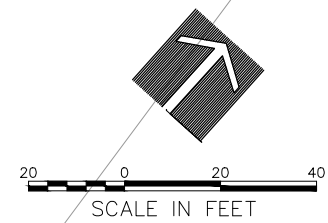
SHEET TITLE

## JOINTING DETAILS





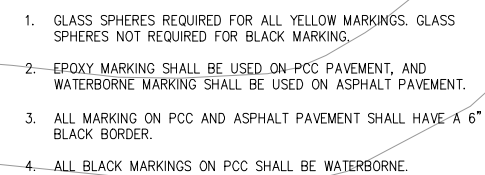
## STAKING PLAN





Contract No. WA070

### MARKING PLAN





Contract No. WA070

LANDSCAPING PLAN