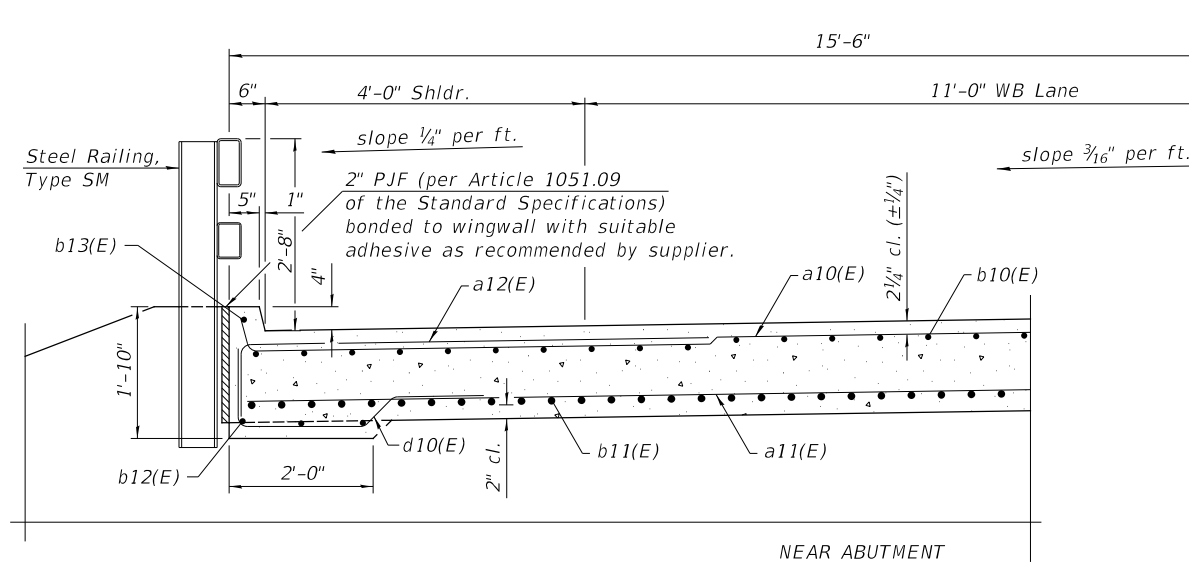
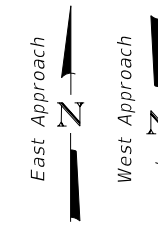


PLAN
(East Approach Shown,
West Approach Mirrored)

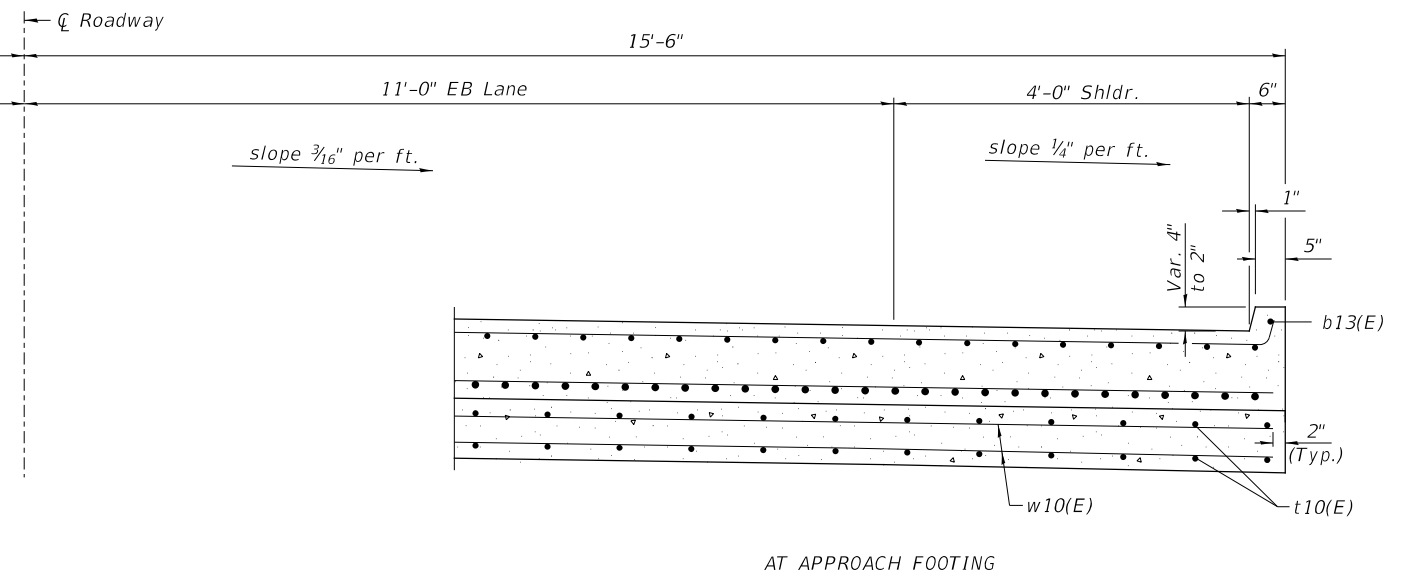
**TOP AND BOTTOM ELEVATIONS
FOR APPROACH FOOTING**

Point	West Approach		East Approach	
	Top	Bottom	Top	Bottom
A	629.14	628.31	629.25	628.42
B	629.43	628.60	629.54	628.71
C	629.19	628.36	629.28	628.45
D	629.09	628.26	629.22	628.39
E	629.38	628.55	629.51	628.68
F	629.14	628.31	629.25	628.42



NEAR ABUTMENT

CROSS SECTION
(Looking East)



AT APPROACH FOOTING

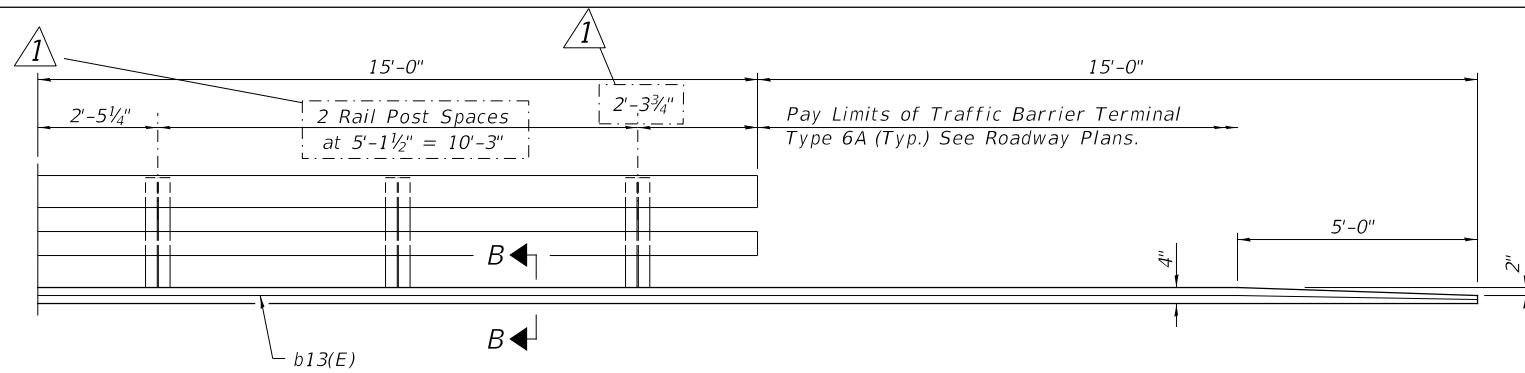
(Sheet 1 of 2)

BRIDGE APPROACH SLAB DETAILS

42960010.dgn 7/8/2020 5:15:55

SHEET NO. 10 21 SHEETS	F.A.S. RTE.	SECTION	COUNTY	TOTAL SHEETS	SHEET NO.
	1283	09-00657-00-BR	LASALLE	41	17
	S.N. 050-3597		CONTRACT NO. 87727		
FED. ROAD DIST. NO. 7 ILLINOIS			FED. AID PROJECT NO. SFG8(697)		

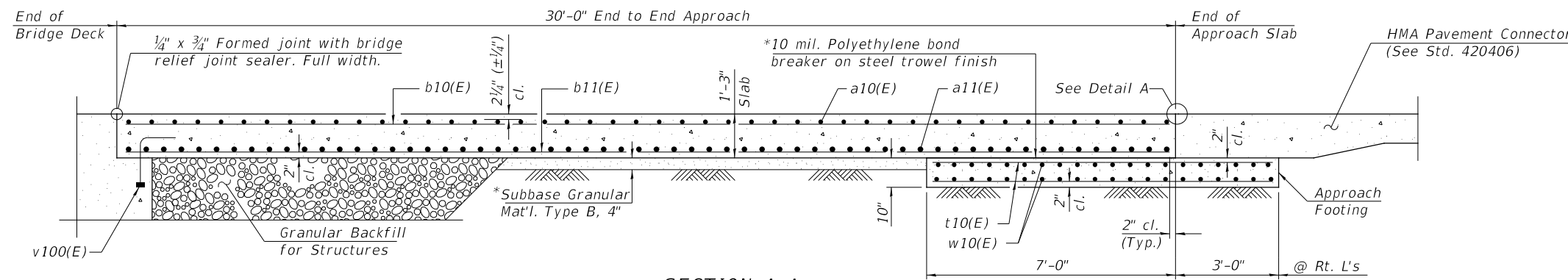
Revised Δ -2020-07-08 BAN



INSIDE ELEVATION OF RAILING AND CURB

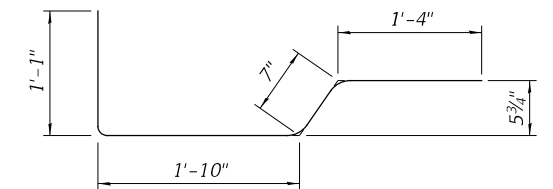
Notes:

Approach slab shall be paid for as Concrete Superstructure (Approach Slab).
 Approach footing concrete shall be paid for as Concrete Structures.
 The approach footing maximum applied service bearing pressure (Q_{max}) = 2.0 ksf.
 Cost of excavation for approach footing included with Concrete Structures.
 For Granular Backfill for Structures and drainage treatment details, see Sheet 2 of 21.
 For railing details, see Sheet 12 of 21.

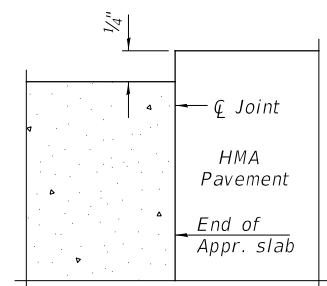


SECTION A-A

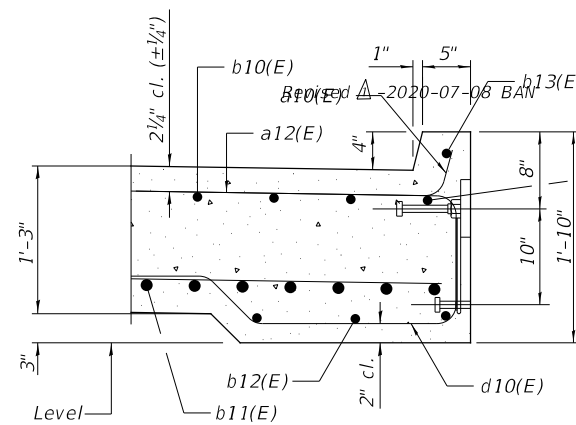
* Cost included with Concrete Superstructure (Approach Slab).



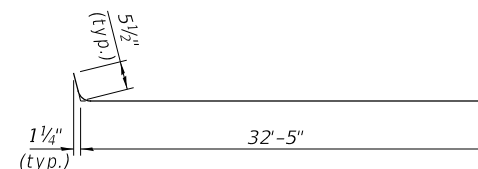
BAR d10(E)



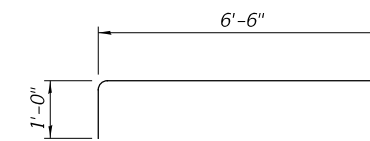
**FLEXIBLE PAVEMENT
DETAIL A**



SECTION B-B



BAR a10(E)



BAR a12(E)

**TWO APPROACHES
BILL OF MATERIAL**

BAR	NO.	SIZE	LENGTH	SHAPE
a10(E)	86	#5	33'-4"	
a11(E)	114	#8	32'-7"	
a12(E)	88	#5	7'-6"	
b10(E)	94	#5	29'-8"	
b11(E)	148	#9	29'-8"	
b12(E)	12	#5	13'-7"	
b13(E)	4	#4	29'-8"	
d10(E)	60	#5	4'-10"	
t10(E)	128	#4	10'-3"	
w10(E)	80	#5	32'-7"	
① Concrete Superstructure (Approach Slab)			CU YD	87.9
Concrete Structures			CU YD	20.4
Reinforcement Bars, Epoxy Coated			POUND	35,580

① See Special Provisions

(Sheet 2 of 2)

BRIDGE APPROACH SLAB DETAILS

SHEET NO. 11 21 SHEETS	F.A.S. RTE.	SECTION	COUNTY	TOTAL SHEETS	SHEET NO.
	1283	09-00657-00-BR	LASALLE	41	18
	S.N. 050-3597		CONTRACT NO. 87727		
FED. ROAD DIST. NO. 7 ILLINOIS			FED. AID PROJECT NO. SFG8(697)		

Revised Δ -2020-07-08 BAN