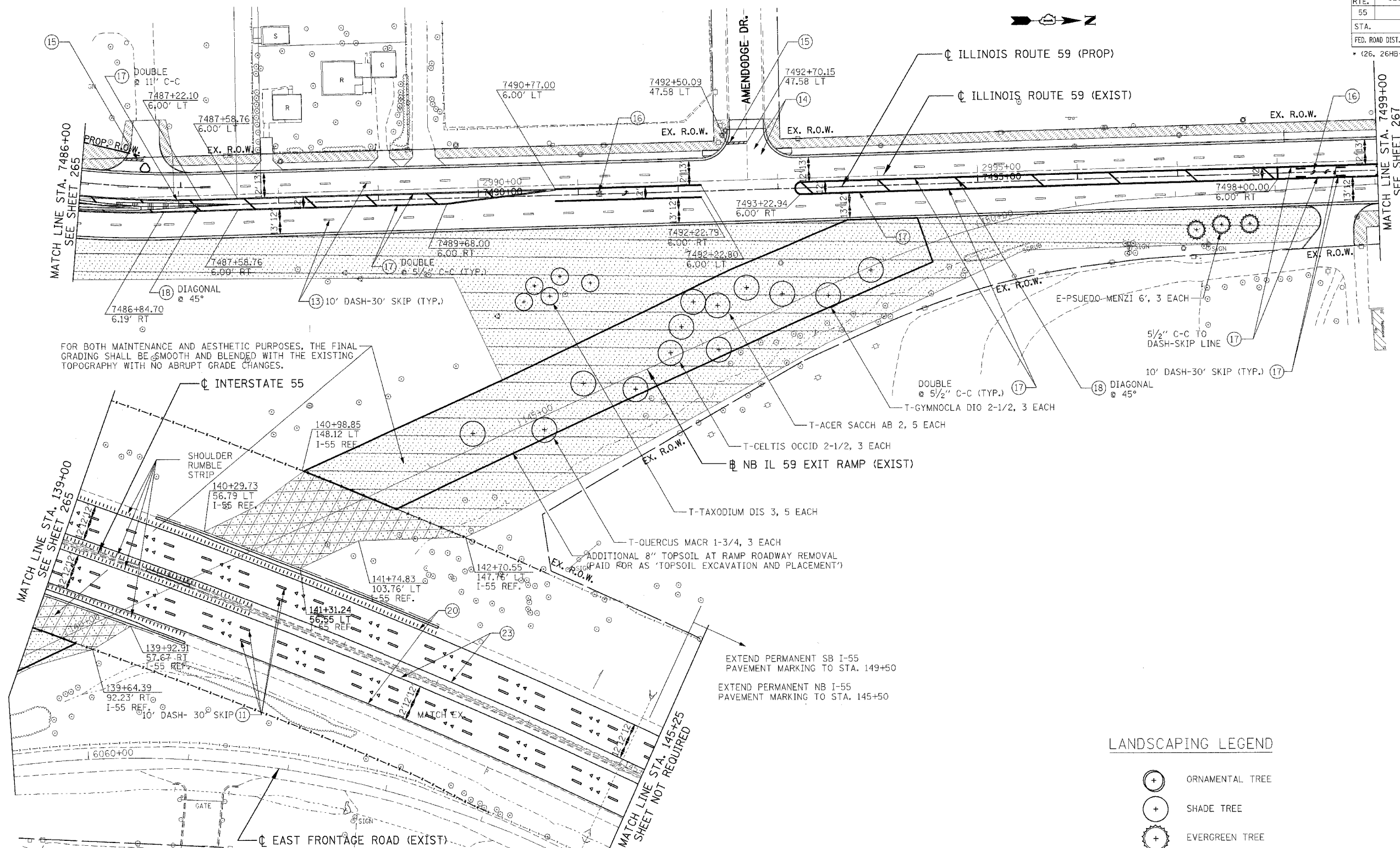


F.A.I. RTE.	SECTION	COUNTY	TOTAL SHEETS	SHEET NO.
55	*	WILL	608	266
STA.	TO STA.			
FED. ROAD DIST. NO. 1		ILLINOIS	FED. AID PROJECT	
* (26, 26HB-1&114) R-2		CONTRACT NO. 60363		



FOR BOTH MAINTENANCE AND AESTHETIC PURPOSES, THE FINAL GRADING SHALL BE SMOOTH AND BLENDED WITH THE EXISTING TOPOGRAPHY WITH NO ABRUPT GRADE CHANGES.

EXTEND PERMANENT SB I-55 PAVEMENT MARKING TO STA. 149+50
 EXTEND PERMANENT NB I-55 PAVEMENT MARKING TO STA. 145+50

PAVEMENT MARKING LEGEND

- | | | | |
|----|---|----|--|
| 10 | PREFORMED PLASTIC PAVEMENT MARKING - TYPE B- LINE 4" (WHITE) | 16 | POLYUREA PAVEMENT MARKING - LETTERS & SYMBOLS |
| 11 | PREFORMED PLASTIC PAVEMENT MARKING - TYPE B- LINE 5" (WHITE) | 17 | POLYUREA PAVEMENT MARKING - LINE 4" (YELLOW) |
| 12 | PREFORMED PLASTIC PAVEMENT MARKING - TYPE B- LINE 4" (YELLOW) | 18 | POLYUREA PAVEMENT MARKING - LINE 12" (YELLOW) |
| 13 | POLYUREA PAVEMENT MARKING - LINE 4" (WHITE) | 20 | THERMOPLASTIC PAVEMENT MARKING - LINE 4" (WHITE) |
| 14 | POLYUREA PAVEMENT MARKING - LINE 6" (WHITE) | 21 | THERMOPLASTIC PAVEMENT MARKING - LINE 8" (WHITE) |
| 15 | POLYUREA PAVEMENT MARKING - LINE 24" (WHITE) | 22 | THERMOPLASTIC PAVEMENT MARKING - LINE 12" (WHITE) |
| 23 | THERMOPLASTIC PAVEMENT MARKING - LINE 4" (YELLOW) | 26 | THERMOPLASTIC PAVEMENT MARKING - LETTERS AND SYMBOLS |
| 24 | THERMOPLASTIC PAVEMENT MARKING - LINE 12" (YELLOW) | 27 | THERMOPLASTIC PAVEMENT MARKING - LINE 6" (WHITE) |
| 25 | POLYUREA PAVEMENT MARKING - LINE 5" (WHITE) | 28 | THERMOPLASTIC PAVEMENT MARKING - LINE 24" (WHITE) |

24 RAISED REFLECTIVE PAVEMENT MARKER ONE WAY CRYSTAL

NOTES:

1. RAISED REFLECTIVE PAVEMENT MARKERS TO BE PLACED PER DISTRICT 1 STD. TC-11.
2. EXIT ONLY PAVEMENT MARKINGS TO BE PLACED PER DISTRICT 1 STD. TC-12

LANDSCAPING LEGEND

- (X) TREE TRUNK PROTECTION (TTP)
- SEEDING CLASS 2A *
- SEEDING CLASS 4 **
- SODDING, SALT TOLERANT ***
- SEEDING CLASS 4 & 5A **

LANDSCAPING LEGEND

- (+) ORNAMENTAL TREE
- (+) SHADE TREE
- (+) EVERGREEN TREE
- (cloud) SHRUBS

REVISIONS	
NAME	DATE

ILLINOIS DEPARTMENT OF TRANSPORTATION
 FAI 55 AT FAP 338 ILLINOIS ROUTE 59
 SECTION: (26, 26HB-1&114) R-2

IL 59 PAVEMENT MARKING AND LANDSCAPING PLANS
 STA. 7486+00 TO STA. 7499+00

SCALE: 1" = 50'
 DATE: 03/14/08

DRAWN BY: JB
 CHECKED BY: ACL

TENG

TENG & ASSOCIATES, INC.
 256 N. BIRCHDALE AVE. CHICAGO, IL 60610
 TELEPHONE: 312.943.0000

\\AL1008R01.DGN, \\SUDOR03.DGN, \\SUDOR04.DGN, \\SUDOR05.DGN, \\SUDOR06.DGN, \\SUDOR07.DGN, \\SUDOR08.DGN, \\SUDOR09.DGN, \\SUDOR10.DGN, \\SUDOR11.DGN, \\SUDOR12.DGN, \\SUDOR13.DGN, \\SUDOR14.DGN, \\SUDOR15.DGN, \\SUDOR16.DGN, \\SUDOR17.DGN, \\SUDOR18.DGN, \\SUDOR19.DGN, \\SUDOR20.DGN, \\SUDOR21.DGN, \\SUDOR22.DGN, \\SUDOR23.DGN, \\SUDOR24.DGN, \\SUDOR25.DGN, \\SUDOR26.DGN, \\SUDOR27.DGN, \\SUDOR28.DGN, \\SUDOR29.DGN, \\SUDOR30.DGN, \\SUDOR31.DGN, \\SUDOR32.DGN, \\SUDOR33.DGN, \\SUDOR34.DGN, \\SUDOR35.DGN, \\SUDOR36.DGN, \\SUDOR37.DGN, \\SUDOR38.DGN, \\SUDOR39.DGN, \\SUDOR40.DGN, \\SUDOR41.DGN, \\SUDOR42.DGN, \\SUDOR43.DGN, \\SUDOR44.DGN, \\SUDOR45.DGN, \\SUDOR46.DGN, \\SUDOR47.DGN, \\SUDOR48.DGN, \\SUDOR49.DGN, \\SUDOR50.DGN, \\SUDOR51.DGN, \\SUDOR52.DGN, \\SUDOR53.DGN, \\SUDOR54.DGN, \\SUDOR55.DGN, \\SUDOR56.DGN, \\SUDOR57.DGN, \\SUDOR58.DGN, \\SUDOR59.DGN, \\SUDOR60.DGN, \\SUDOR61.DGN, \\SUDOR62.DGN