

F.A.I. RTE.	SECTION	COUNTY	TOTAL SHEETS	SHEET NO.
59	*	WILL.	608	347
STA.		TO STA.		
FED. ROAD DIST. NO. 1		ILLINOIS FED. AID PROJECT		
* (26, 26HB-1 & 114) R-2 CONTRACT NO. 60363				

BENCHMARK:
TBM#1 Top of a large nail set in the east face of power pole on west side of West Frontage Rd. near @ Interstate 55 Sta. 116+00. El. 595.91.

EXISTING STRUCTURE:
S.N. 099-0030 Four span, 269'-8" back to back of abutments, continuous steel multi-beam bridge on multi-column concrete piers and open abutments. 26" between barriers. Existing structure is approximately 2500' north of proposed structure.

SALVAGE:
None.

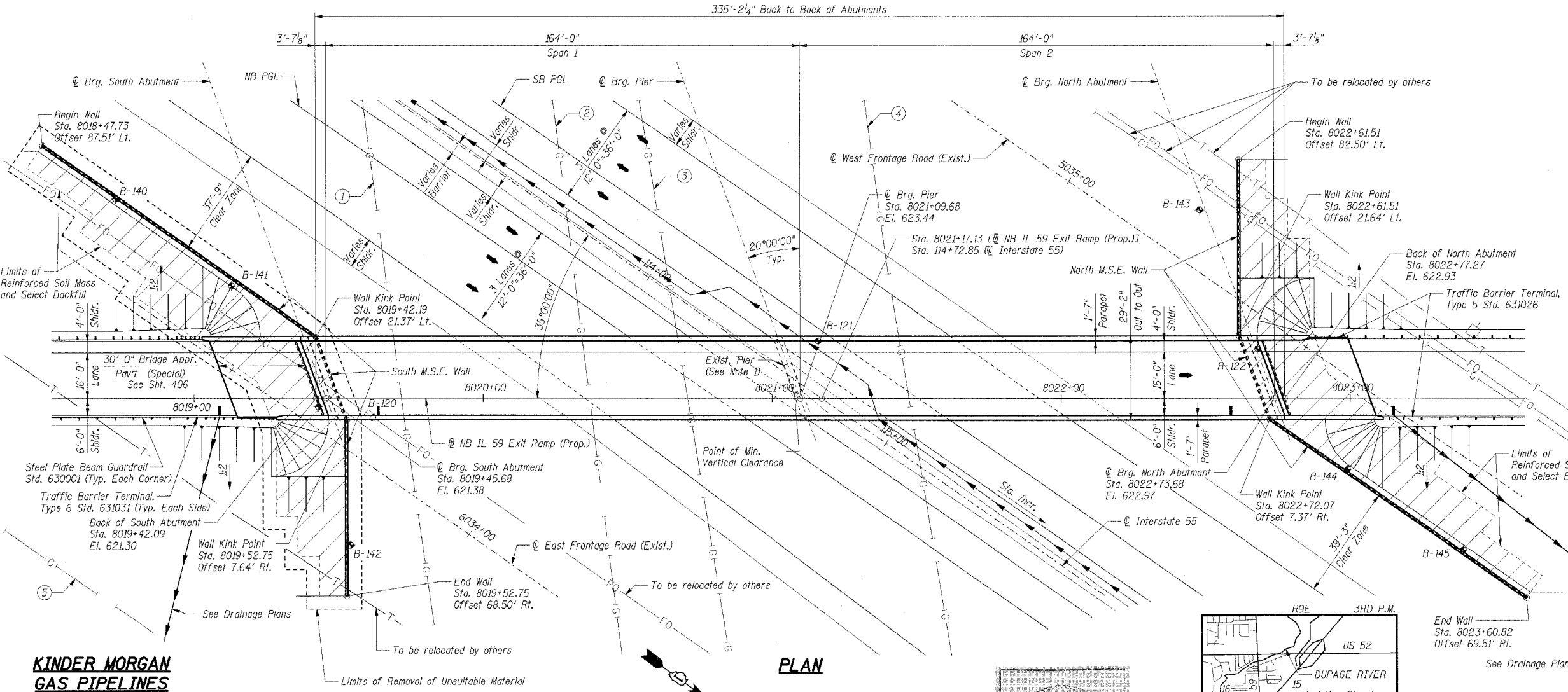
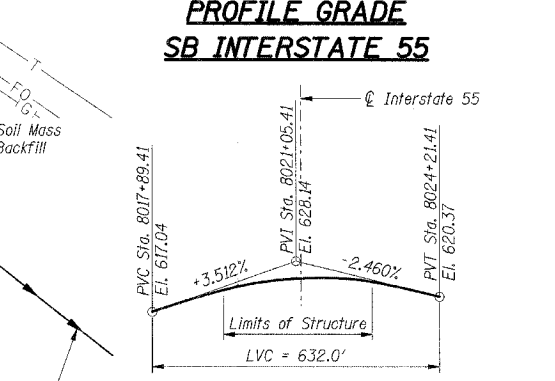
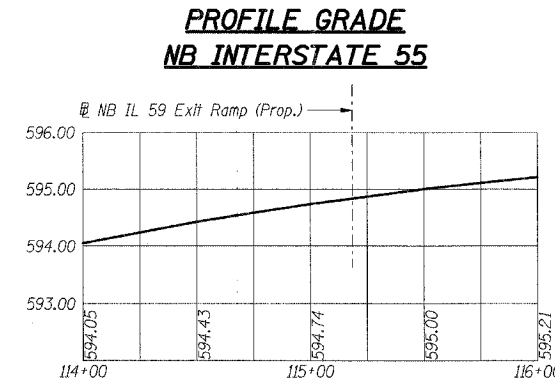
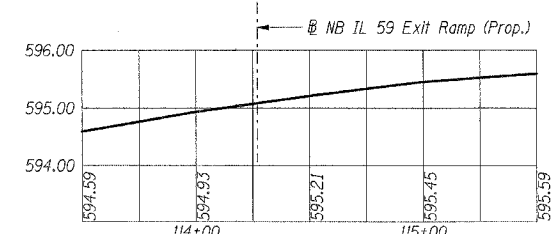
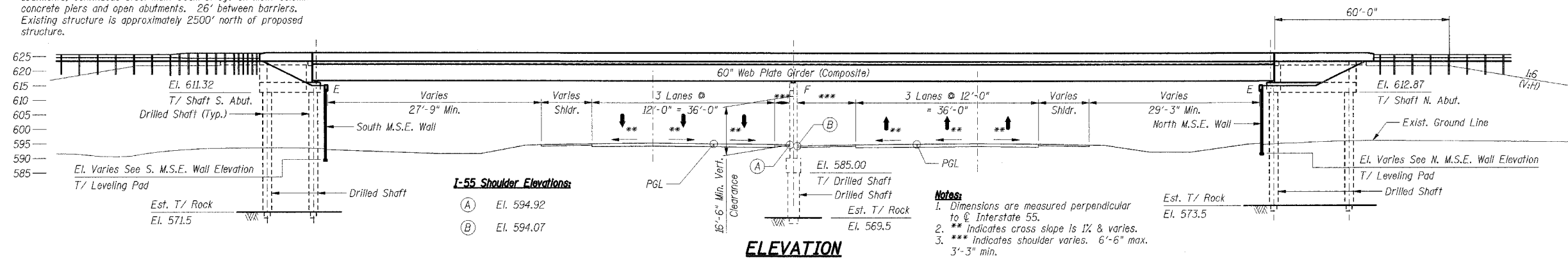
STAGING:
Traffic will be maintained on existing NB IL 59 Exit Ramp until proposed structure is constructed. Frontage roads will be relocated prior to construction of proposed structure.

DESIGN SPECIFICATIONS:
2002 AASHTO Standard Specifications for Highway Bridges

DESIGN LOADING:
Roadway Live Load: HS 20-44
Future Wearing Surface = 50 psf

DESIGN STRESSES:
Concrete, $f'_c = 3,500$ psi
Reinforcement, $f_y = 60,000$ psi
Structural Steel, $f_y = 50,000$ psi (M 270 Grade 50)

SEISMIC DATA:
Seismic Performance Category (SPC) = A
Bedrock Acceleration Coefficient (A) = 0.04g
Site Coefficient (S) = 1.0



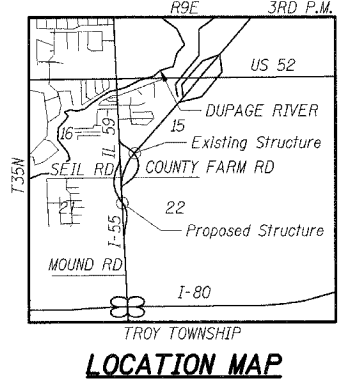
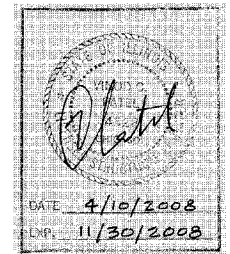
KINDER MORGAN GAS PIPELINES

ID	DESIGNATION	DIAMETER
①	GC #1	30"
②	AM #4	36"
③	AM #2	24"
④	GC #3	36"
⑤	GC #2	36"

LEGEND

- ◆ B-0 Soil Boring Location
- T — Exist. Telephone Line
- G — Exist. Gas Line
- FO — Exist. Fiber Optic Line
- □ — Exist. Electrical Pole
- | — Prop. Storm Sewer
- | — Drainage Scupper or Inlet

Notes:
1. Center pier constructed under a separate previous contract (Contract 62895).



SHT. S-1 OF S-24

REVISIONS	
NAME	DATE

ILLINOIS DEPARTMENT OF TRANSPORTATION
F.A.P. ROUTE 338 (ILLINOIS ROUTE 59)
IL ROUTE 59 OVER F.A.I. 55 (I-55)
SECTION (26, 26HB-1 & 114) R-2
STRUCTURE NUMBER 099-4642
STATION 8021+17.13, WILL COUNTY
GENERAL PLAN AND ELEVATION

DATE: 03/14/08
DRAWN BY: TMH
CHECKED BY: MDB

TENG