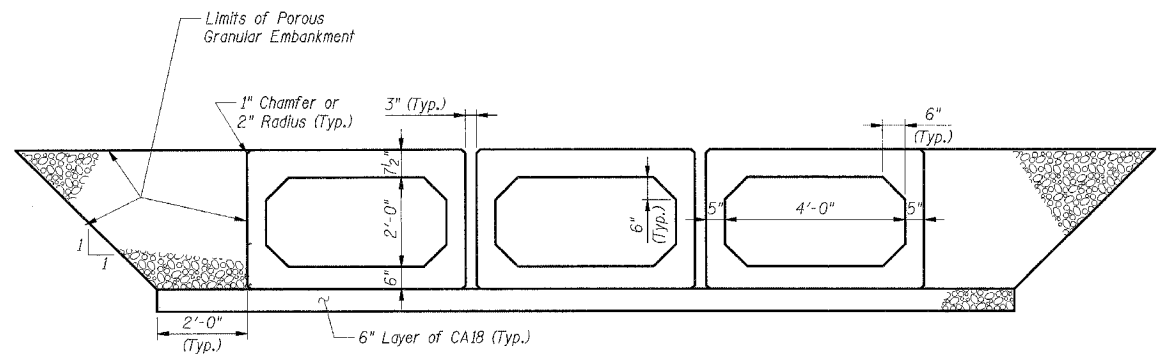
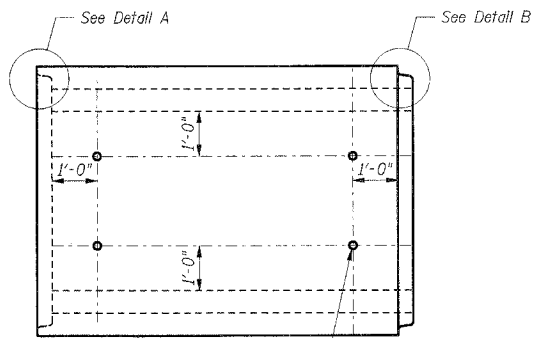


F.A.I. RTE.	SECTION	COUNTY	TOTAL SHEETS	SHEET NO.
59	*	WILL	608	385
STA.		TO STA.		
FED. ROAD DIST. NO. 1 ILLINOIS FED. AID PROJECT				
* (26, 26HB-1 & 114) R-2				
CONTRACT NO. 60363				

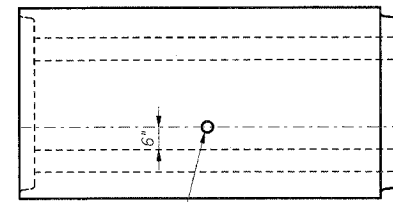


SECTION



PLAN
2" ϕ Hole for lifting Device (Top Slab Only) (Typ.)

(Location of lifting holes may be varied as needed to clear reinforcement)



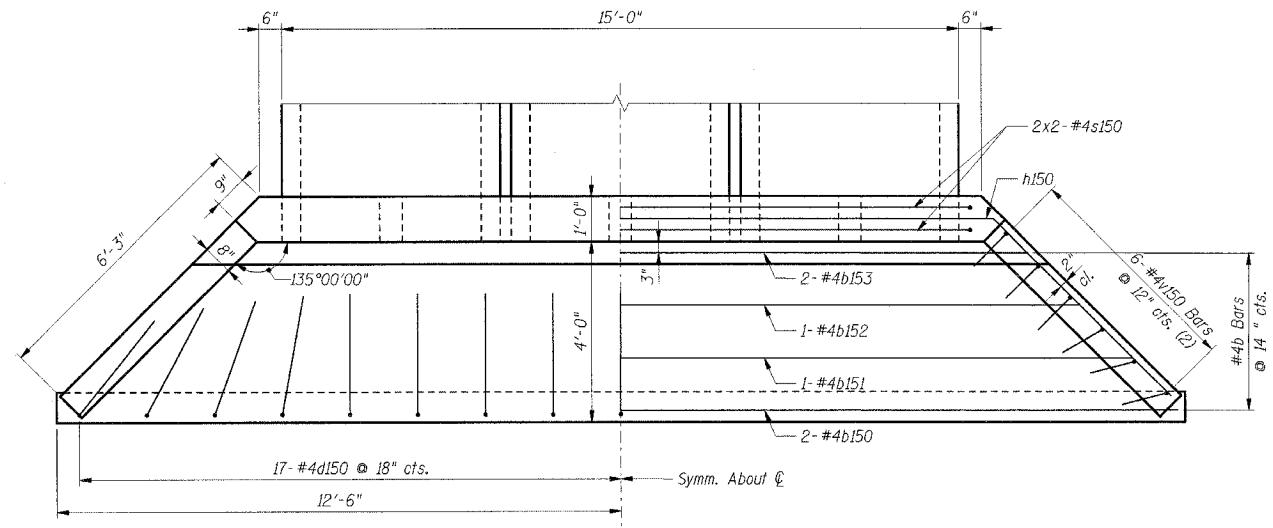
ELEVATION

STANDARD BOX CULVERT SECTION

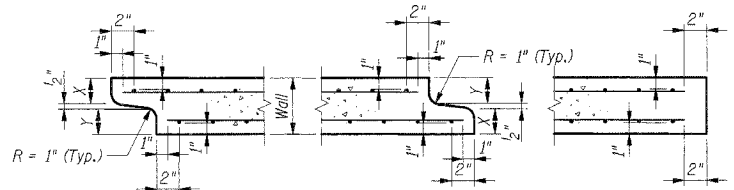
BAR LIST

Bar	No.	Size	Length	Shape
b150	2	#4	24'-8"	—
b151	1	#4	22'-10"	—
b152	1	#4	20'-6"	—
b153	2	#4	18'-2"	—
d150	17	#4	5'-4"	┌
h150	1	#4	27'-6"	∇
h151	6	#4	5'-11"	—
s150	4	#4	20'-4"	└
v150	6	#4	7'-1"	└
Item		Unit	Total	
Reinforcement Bars***		lbs	270	
Concrete Structures***		Cu Yd	4.9	

*** For information only, cost included with Box Culvert End Section, Culvert No. 3.

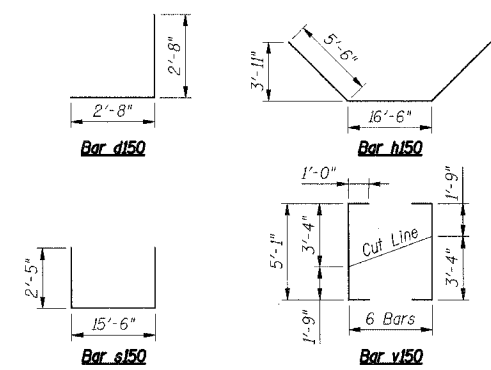


PLAN



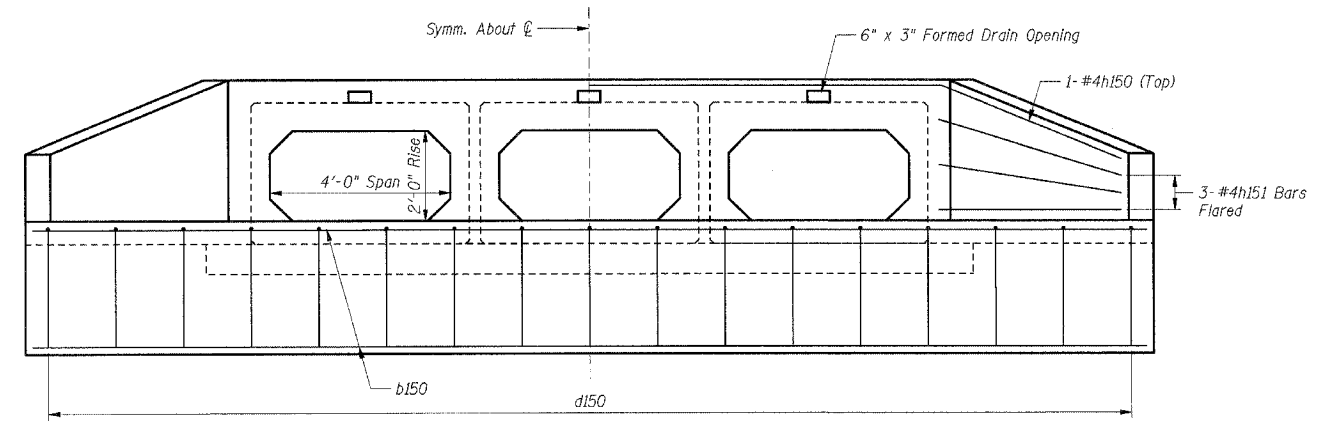
DETAIL A (Typ. Inlet End) **DETAIL B** (Typ. Outlet End) **DETAIL C** (Typ. Exposed End)

Note: Inlet and outlet ends shall be compatible.

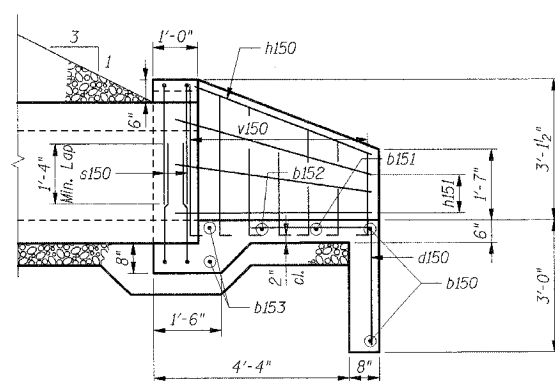


Reinforcement Notes:
(1) Bend bars in the field to fit as required.
(2) Cut bars according to Cutting Diagram and use reminder in other side of the Headwall.

Notes:
1. Bars indicated thus: 4x2-#5 etc. indicate 4 lines of bars with 2 lengths per line.
2. B.F. Indicates Back Face
F.F. Indicates Front Face
E.F. Indicates Each Face.



APRON END SECTION



HALF SIDE ELEVATION

SHT. BCC-2 OF BCC-5

REVISIONS	
NAME	DATE

ILLINOIS DEPARTMENT OF TRANSPORTATION
F.A.P. ROUTE 338 (ILLINOIS ROUTE 59)
IL ROUTE 59 TRIPLE BOX CULVERT
SECTION (26, 26HB-1 & 114) R-2
STRUCTURE NUMBER 099-0352
STATION 7499+81.56, WILL COUNTY
BOX CULVERT END SECTIONS 1

DATE: 03/14/08
DRAWN BY: TMH
CHECKED BY:

TENG
TENG & ASSOCIATES, INC.
200 N. MICHIGAN AVE. CHICAGO, IL 60601
TELEPHONE: 312.666.0000

\TTR00RHLDEN... \BY000562.DWG... \BY000562.DWG... BONDHILUD...
 3-14-2008, 14:54:47... \DOCUMENT\19327900\STRUCT\DWG\BY000562.DWG... color...
 color... K:\SYSTEM\TENG\DATA\COLORTABLE.TEL...
 pen... N/A