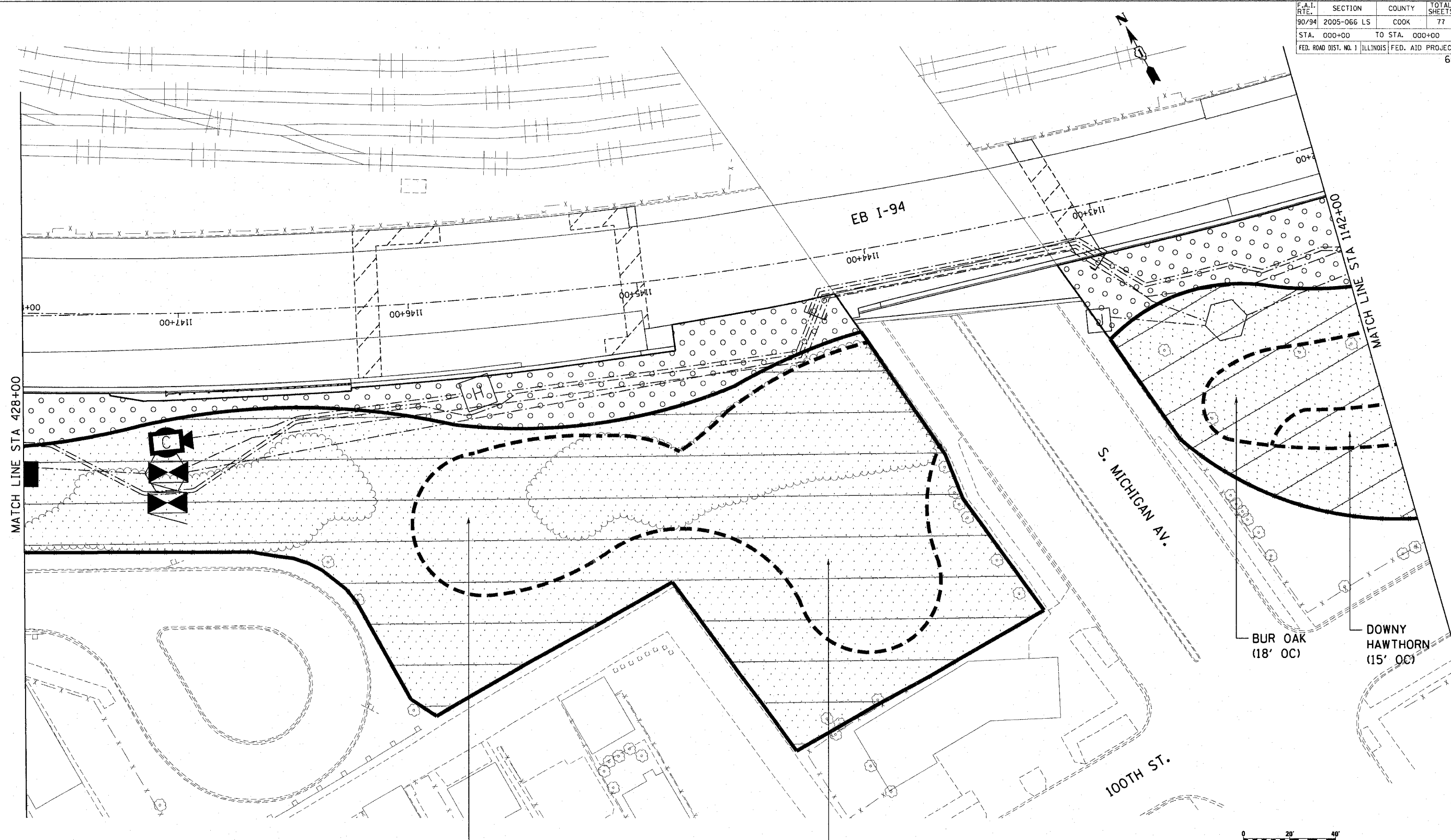


| | | | | |
|---|-------------|----------------|--------------|-----------|
| F.A.I. RTE. | SECTION | COUNTY | TOTAL SHEETS | SHEET NO. |
| 90/94 | 2005-066 LS | COOK | 77 | 18 |
| STA. 000+00 | | TO STA. 000+00 | | |
| FED. ROAD DIST. NO. 1 ILLINOIS FED. AID PROJECT | | | | |
| 60A72 | | | | |



MATCH LINE STA 428+00

MATCH LINE STA 1142+00

(19) AMERICAN LINDEN
(18' OC)

(19) AMERICAN HOPHORNBEAM
(18' OC)

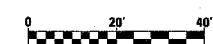
BUR OAK
(18' OC)

DOWNY
HAWTHORN
(15' OC)

100TH ST.

S. MICHIGAN AV.

EB I-94



SHT-9 of 67

| REVISIONS | |
|-----------|------|
| NAME | DATE |
| | |
| | |
| | |
| | |
| | |
| | |
| | |
| | |
| | |
| | |

ILLINOIS DEPARTMENT OF TRANSPORTATION
F.A.I. 90/94 (DAN RYAN EXPRESSWAY)
NB ROADSIDE EMBANKMENT LANDSCAPE

**PROPOSED IMPROVEMENT
I-57 INTERCHANGE TO 31ST STREET**

SCALE: 1"=20'
DATE: JUNE 2008

DRAWN BY: LAM
CHECKED BY: JWM

CTE | AECOM

P:\P40465\GWIN_30+roadside_embankment\shn22a_nbv\se22009_1157_20a.dwg 6/5/08 PM 3/19/2008