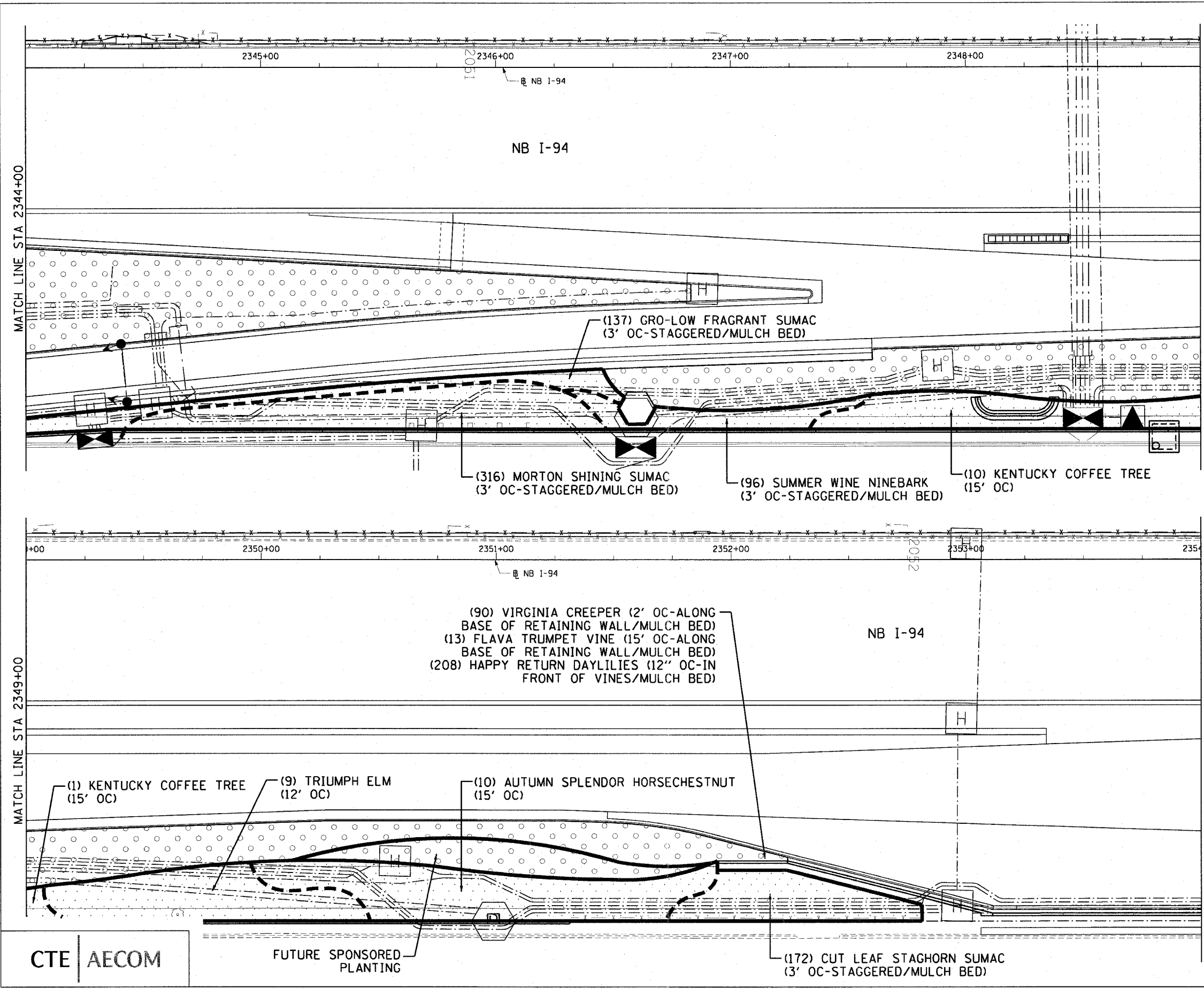


F.A.I. RTE.	SECTION	COUNTY	TOTAL SHEETS	SHEET NO.
90/94	2005-066 LS	COOK	77	46
STA. 2344+00	TO STA. 2354+00			
FED. ROAD DIST. NO. 1 ILLINOIS FED. AID PROJECT				
60A72				



MATCH LINE STA 2344+00

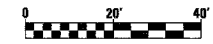
MATCH LINE STA 2349+00

MATCH LINE STA 2349+00

MATCH LINE STA 2354+00

CTE | AECOM

FUTURE SPONSORED PLANTING



SHT-37 of 67

REVISIONS	NAME	DATE

ILLINOIS DEPARTMENT OF TRANSPORTATION  
 F.A.I. 90/94 (DAN RYAN EXPRESSWAY)  
 NB ROADSIDE EMBANKMENT LANDSCAPE  
 PROPOSED IMPROVEMENT  
 I-57 INTERCHANGE TO 31ST STREET

SCALE: 1"=20'  
 DATE: JUNE 2008

DRAWN BY: LAM  
 CHECKED BY: JWM

P:\04068\01\13\roadside embankment\17220.mxd 6/19/2008 6:57:00 PM