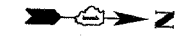
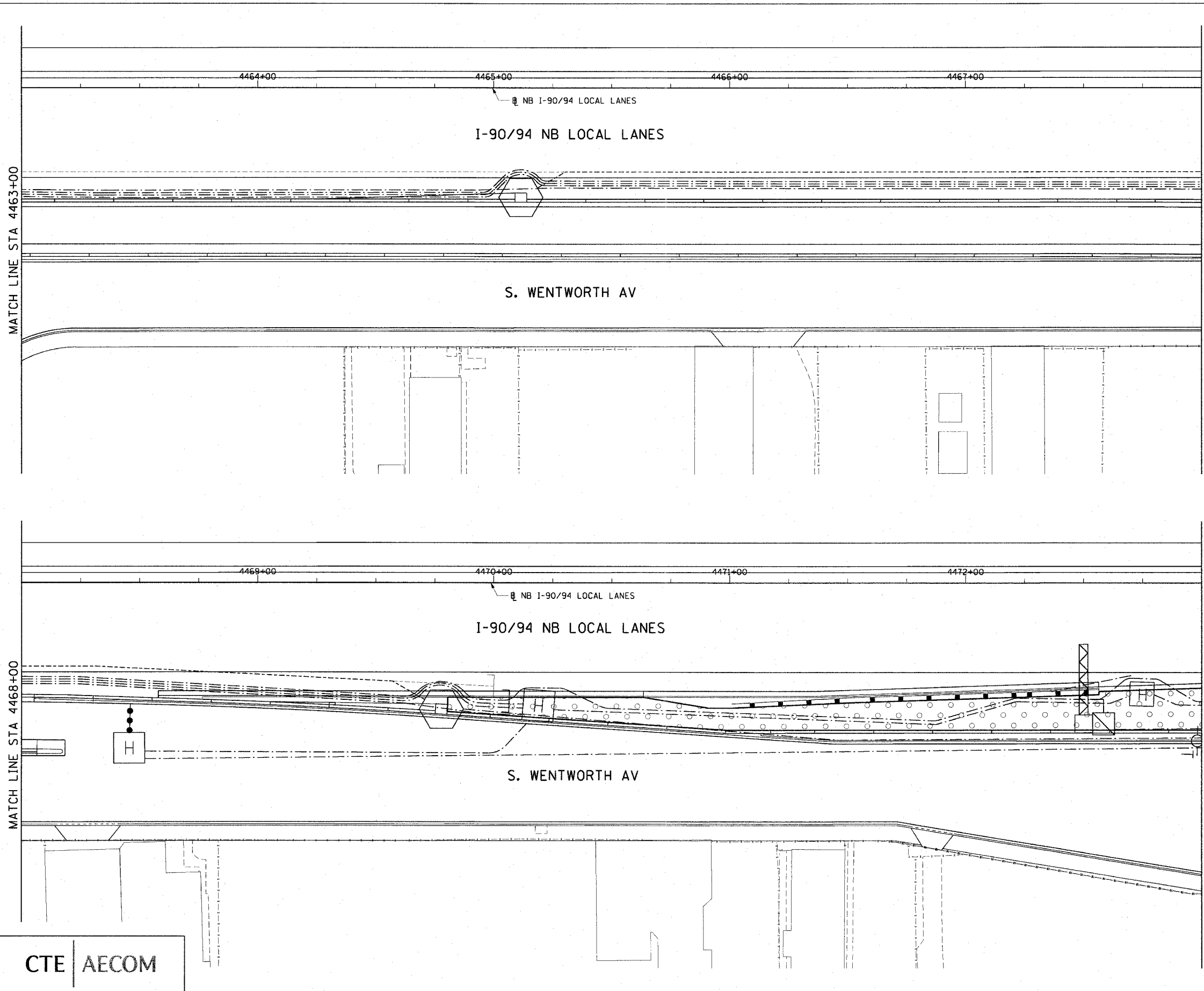


F.A.I. RTE.	SECTION	COUNTY	TOTAL SHEETS	SHEET NO.
90/94	2005-066 LS	COOK	77	59
STA. 4463+00		TO STA. 4473+00		
FED. ROAD DIST. NO. 1 ILLINOIS FED. AID PROJECT				
60A72				

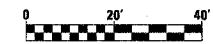


MATCH LINE STA 4463+00

MATCH LINE STA 4468+00

MATCH LINE STA 4468+00

MATCH LINE STA 4473+00



SHT-50 of 67

REVISIONS	
NAME	DATE

ILLINOIS DEPARTMENT OF TRANSPORTATION  
 F.A.I. 90/94 (DAN RYAN EXPRESSWAY)  
 NB ROADSIDE EMBANKMENT LANDSCAPE  
 PROPOSED IMPROVEMENT  
 I-57 INTERCHANGE TO 31ST STREET

SCALE: 1"=20'  
 DATE: JUNE 2008  
 DRAWN BY: LAM  
 CHECKED BY: RMG

CTE | AECOM

I:\p\40460\civil\30-roadside embankment\shn\22a\_nb\vs22a050\_2a.sht 3/19/2008 6:57:39 PM