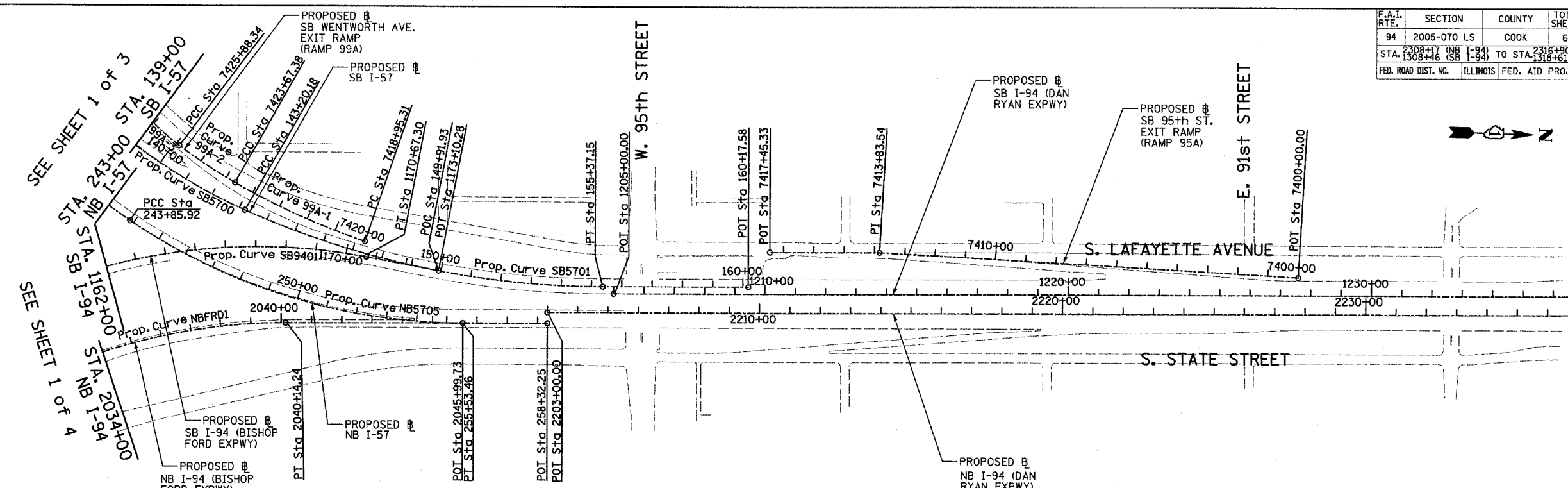


F.A.I. RTE.	SECTION	COUNTY	TOTAL SHEETS	SHEET NO.
94	2005-070 LS	COOK	65	9
STA. 2308+17 (NB I-94) TO STA. 2316+90 (NB I-94)				
STA. 1308+46 (SB I-94) TO STA. 1318+61 (SB I-94)				
FED. ROAD DIST. NO. ILLINOIS FED. AID PROJECT				

60A7



Prop. Curve SB5700  
P.I. STA = 133+70.06  
N = 1,839,521.70  
E = 1,177,054.03  
Δ = 66° 11' 55.15" (LT)  
D = 3° 02' 10.83"  
R = 1,887.00  
L = 2,180.21  
E = 365.53  
T = 1,230.09  
P.C. STA = 121+39.97  
N = 1,839,491.52  
E = 1,175,824.31  
P.T. STA = 143+20.18  
N = 1,840,659.02  
E = 1,177,522.68

Prop. Curve SB5701  
P.I. STA = 149+37.75  
N = 1,841,230.00  
E = 1,177,757.97  
Δ = 24° 02' 07.49" (LT)  
D = 1° 58' 30.13"  
R = 2,901.00  
L = 1,216.96  
E = 65.01  
T = 617.56  
P.C. STA = 143+20.18  
N = 1,840,659.02  
E = 1,177,522.68  
P.T. STA = 155+37.15  
N = 1,841,847.31  
E = 1,177,740.29

Prop. Curve NB5705  
P.I. STA = 249+87.51  
N = 1,840,788.31  
E = 1,177,892.02  
Δ = 34° 03' 37.98" (LT)  
D = 2° 55' 02.28"  
R = 1,964.00  
L = 1,167.54  
E = 90.07  
T = 601.59  
P.C. STA = 243+85.92  
N = 1,840,280.48  
E = 1,177,569.49  
P.T. STA = 255+53.46  
N = 1,841,389.65  
E = 1,177,874.80

Prop. Curve SB9401  
P.I. STA = 1160+15.97  
N = 1,838,783.95  
E = 1,177,299.83  
Δ = 100° 48' 58.07" (RT)  
D = 2° 59' 59.20"  
R = 1,910.00  
L = 3,360.79  
E = 1,086.95  
T = 2,309.46  
P.C. STA = 1137+06.52  
N = 1,838,851.99  
E = 1,179,608.28  
P.T. STA = 1170+67.30  
N = 1,841,064.16  
E = 1,177,666.20

SB I-94 (DAN RYAN EXPWY)  
POT STA = 1205+00.00  
N = 1,841,884.04  
E = 1,177,763.25

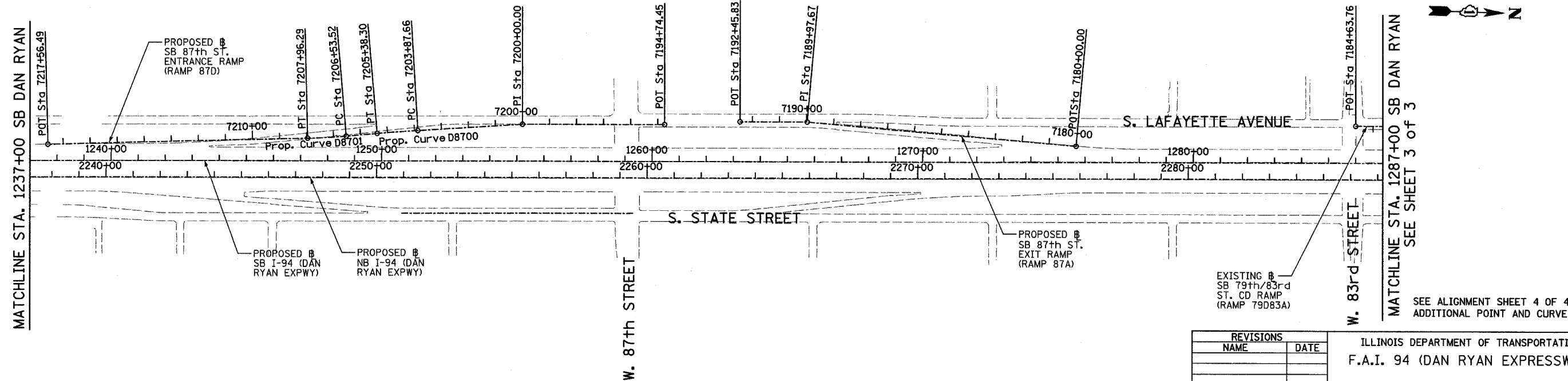
SB I-57  
POT STA = 160+17.58  
N = 1,842,327.55  
E = 1,177,726.54

NB I-57  
POT STA = 258+32.25  
N = 1,841,668.33  
E = 1,177,866.82

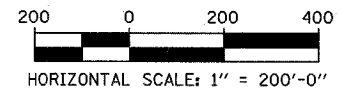
NB I-94 (DAN RYAN EXPWY)  
POT STA = 2203+00.00  
N = 1,841,667.31  
E = 1,177,830.83

SB I-94 (BISHOP FORD EXPWY)  
POT STA = 1173+10.28  
N = 1,841,304.06  
E = 1,177,704.74

NB I-94 (BISHOP FORD EXPWY)  
POT STA = 2045+99.73  
N = 1,841,389.65  
E = 1,177,874.80



TYLIN INTERNATIONAL



REVISIONS	
NAME	DATE

ILLINOIS DEPARTMENT OF TRANSPORTATION  
F.A.I. 94 (DAN RYAN EXPRESSWAY)  
ALIGNMENT  
SHEET 2 OF 4  
SCALE: 1"=200'  
DATE: MAY 1, 2008  
DRAWN BY: JPM  
CHECKED BY: DAK