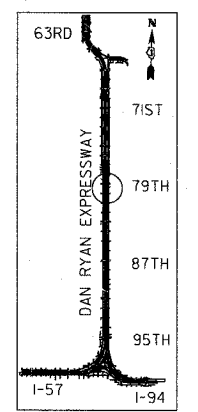
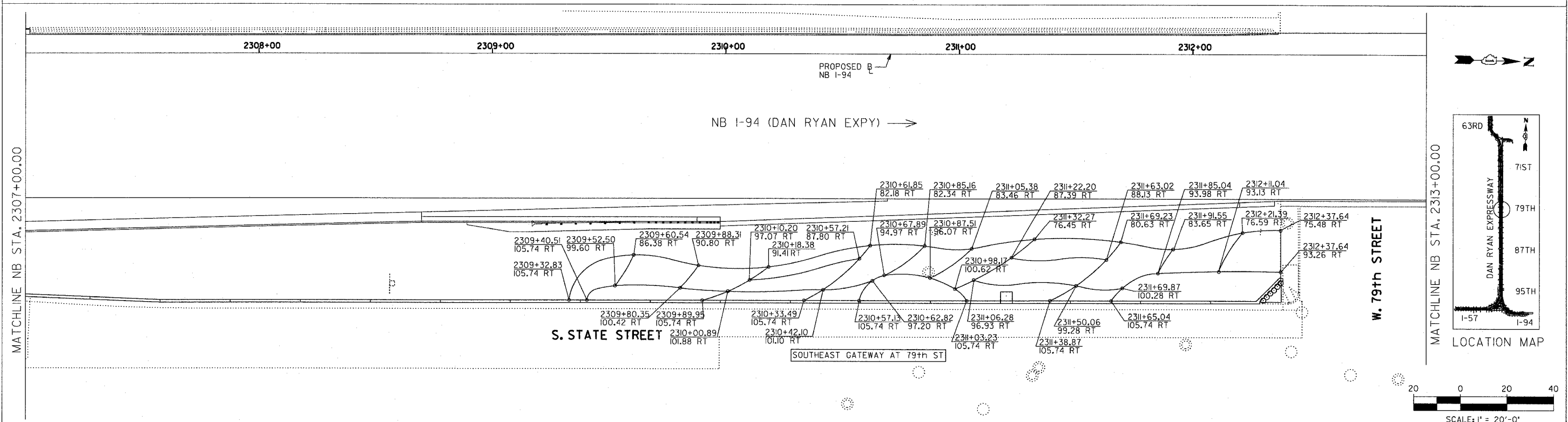
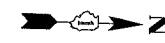
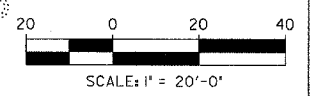


F.A.I. RTE.	SECTION	COUNTY	TOTAL SHEETS	SHEET NO.
94	2005-070 LS	COOK	65	22
STA. 2307+00		TO STA. 2313+00		
FED. ROAD DIST. NO.	ILLINOIS	FED. AID PROJECT		

60A76



LOCATION MAP



MATCHLINE NB STA. 2307+00.00

MATCHLINE NB STA. 2313+00.00

**SITE DESIGN GROUP**

**TYLIN INTERNATIONAL**

NOTE: THE LOCATION OF ALL PLANT MATERIAL SHALL BE STAKED BY THE CONTRACTOR FOR APPROVAL BY THE ENGINEER IN FIELD, PRIOR TO INSTALLATION. INDIVIDUAL TREES SHALL BE STAKED WITH IDENTITIES WRITTEN ON STAKES. SHRUB AND PERENNIAL BEDS SHALL BE OUTLINED WITH STAKES AND PAINTED LINES.

REVISIONS	
NAME	DATE

ILLINOIS DEPARTMENT OF TRANSPORTATION  
 F.A.I. 94 (DAN RYAN EXPRESSWAY)  
 79TH STREET GATEWAY LANDSCAPING AND IRRIGATION  
 PLANTING BED LAYOUT PLAN  
 SE QUADRANT AT 79TH ST. - NB I-94

SCALE: 1"=20'  
 DATE: May 1, 2008

DRAWN BY: EM  
 CHECKED BY: JO

\$DATE\$ \$TIME\$