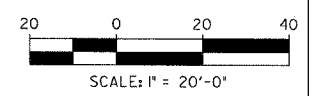
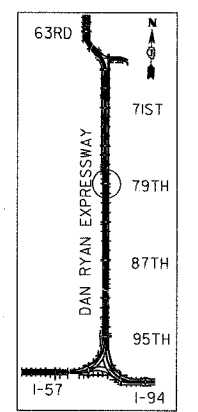
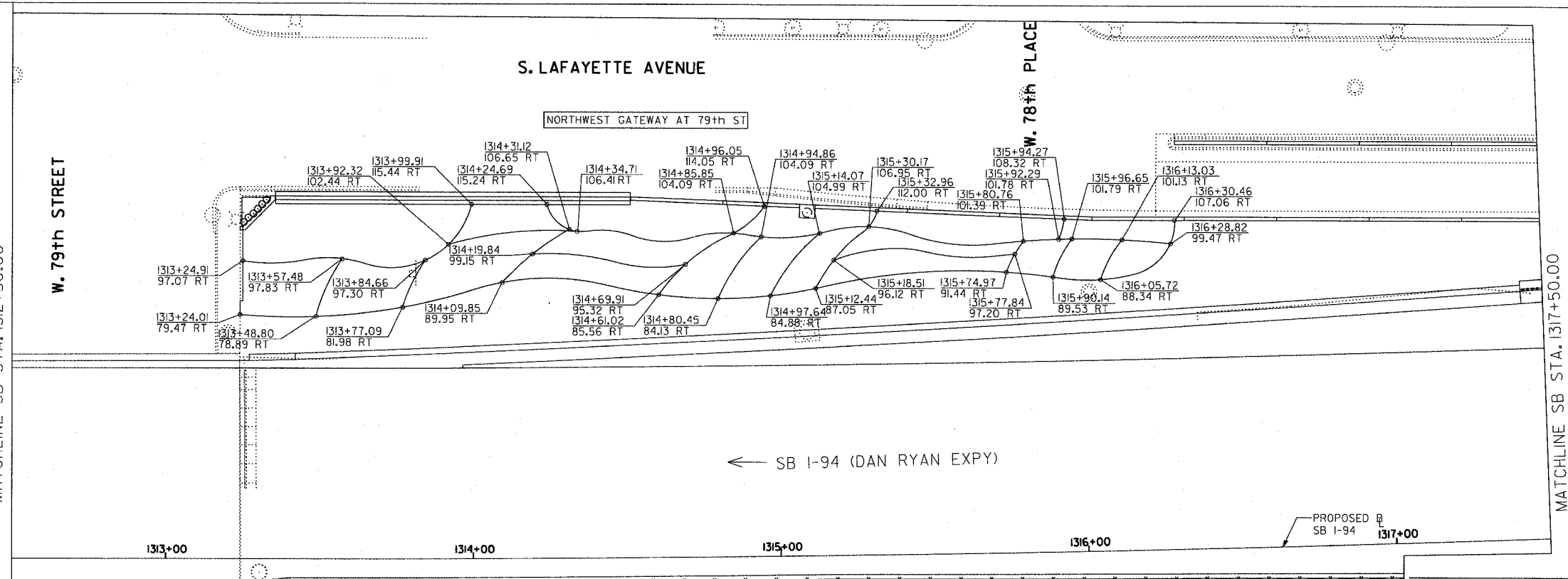
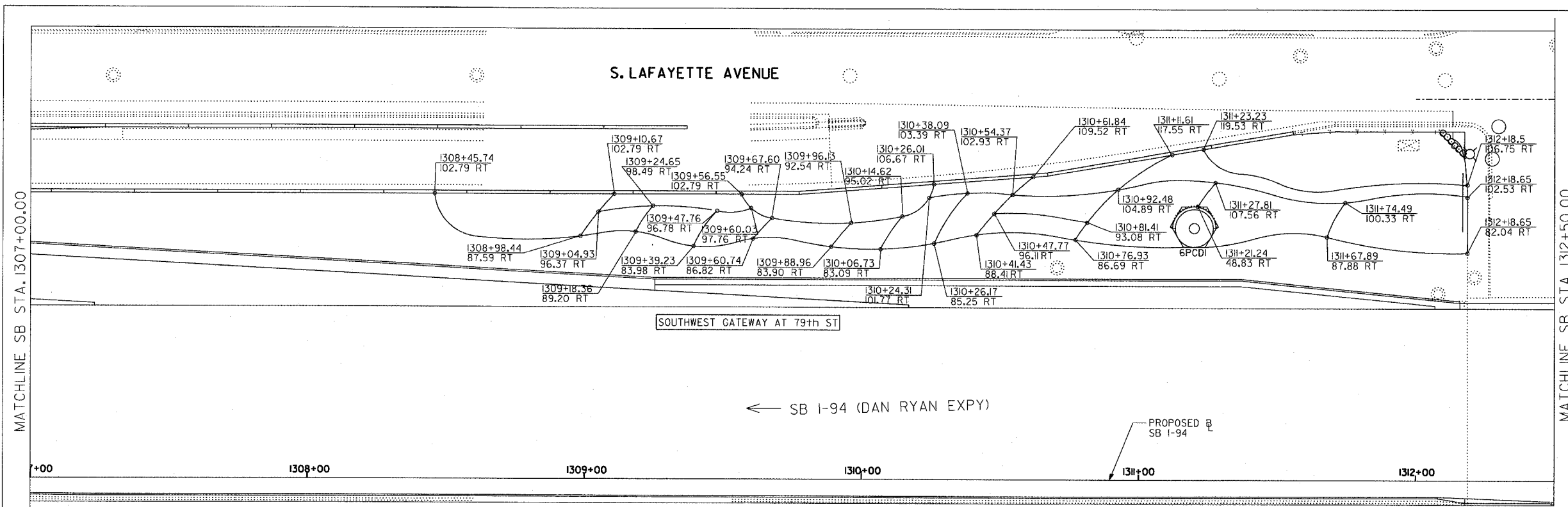


F.A.J. RTE.	SECTION	COUNTY	TOTAL SHEETS	SHEET NO.
94	2005-070 LS	COOK	65	37
STA. 1307+00		TO STA. 1317+50		
FED. ROAD DIST. NO.	ILLINOIS	FED. AID PROJECT		
		60A76		



**SITE DESIGN GROUP**  
**TYLIN INTERNATIONAL**

NOTE: THE LOCATION OF ALL PLANT MATERIAL SHALL BE STAKED BY THE CONTRACTOR FOR APPROVAL BY THE ENGINEER IN FIELD, PRIOR TO INSTALLATION. INDIVIDUAL TREES SHALL BE STAKED WITH IDENTITIES WRITTEN ON STAKES. SHRUB AND PERENNIAL BEDS SHALL BE OUTLINED WITH STAKES AND PAINTED LINES.

REVISIONS	
NAME	DATE

ILLINOIS DEPARTMENT OF TRANSPORTATION  
F.A.J. 94 (DAN RYAN EXPRESSWAY)  
PLANTING BED LAYOUT PLANS  
SW + NW QUADRANTS AT 79TH ST. - SB I-94  
SCALE: 1"=20'  
DATE: May 1, 2008  
DRAWN BY: EM  
CHECKED BY: JO