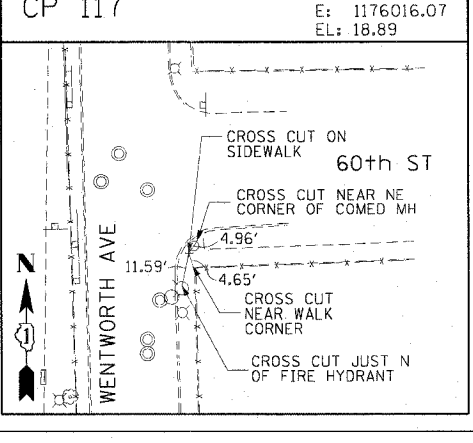
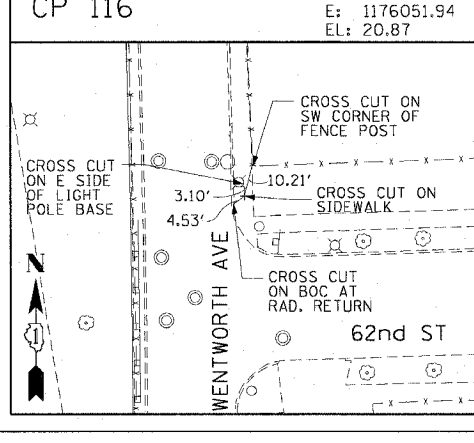
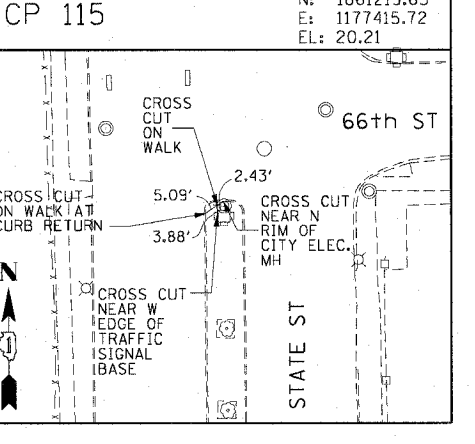
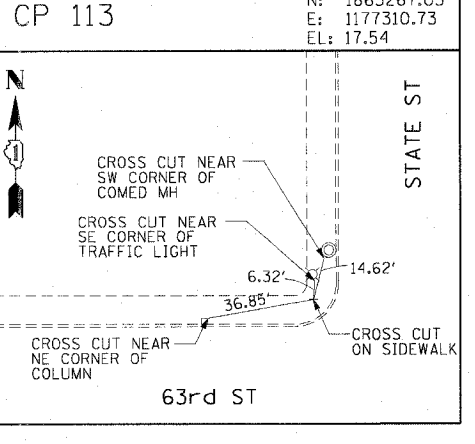
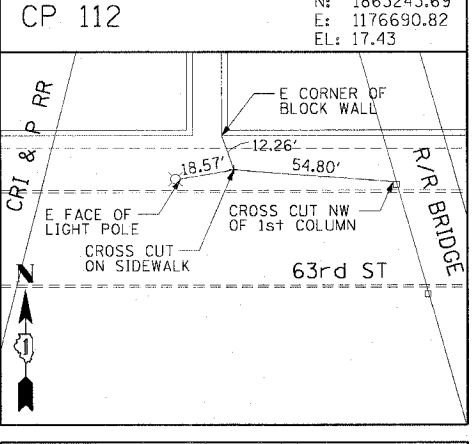
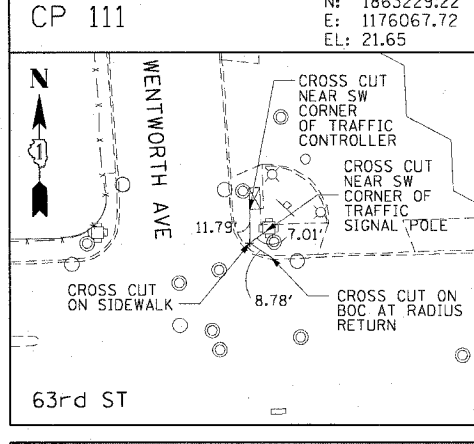
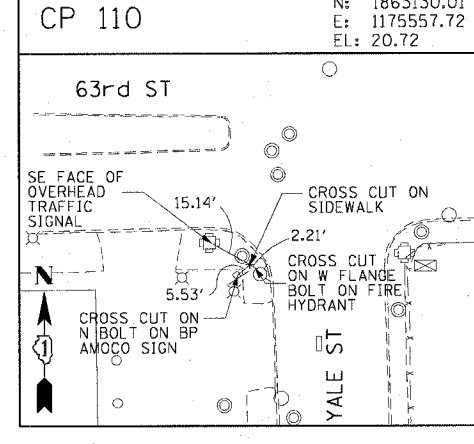
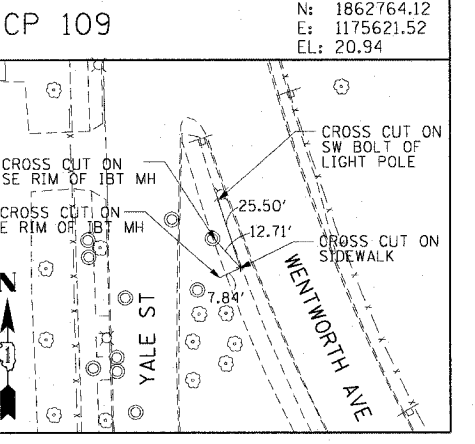
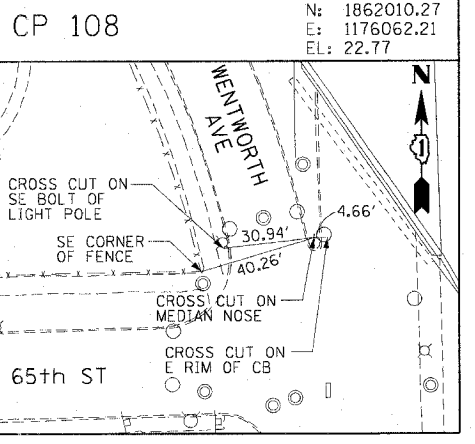
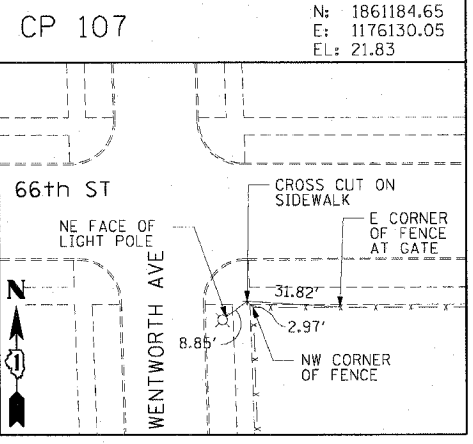
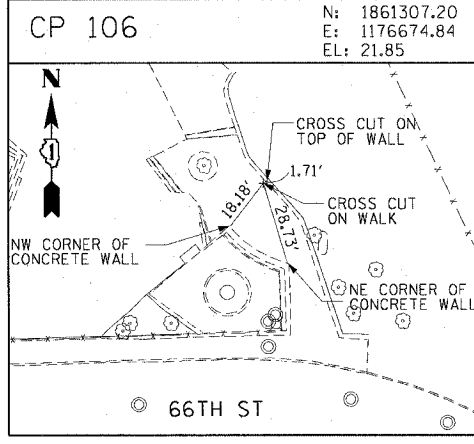
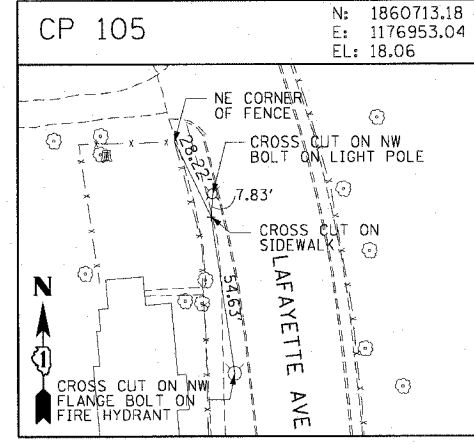
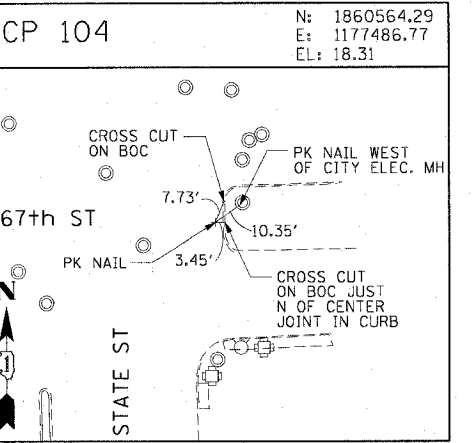
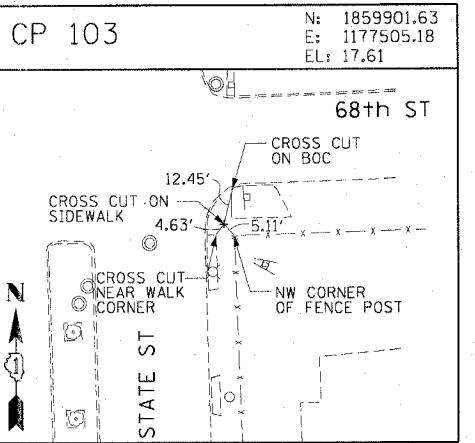
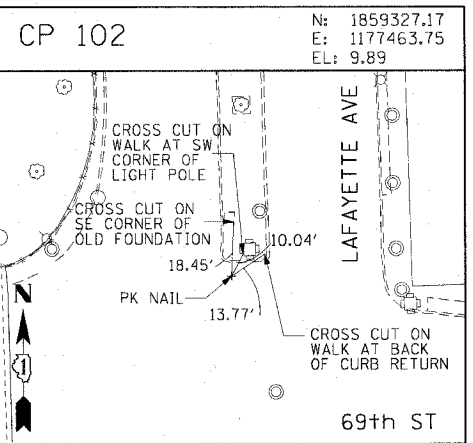
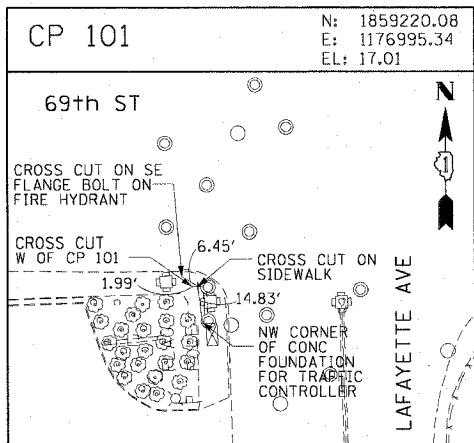
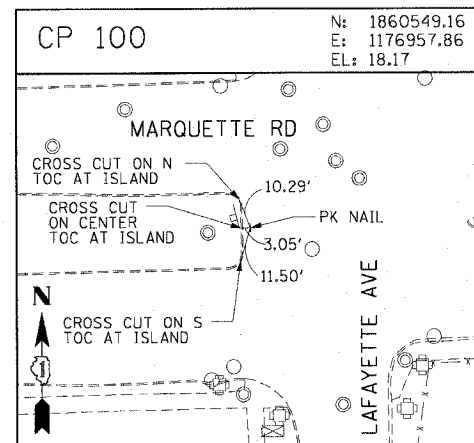


F.A.I. SECTION	COUNTY	TOTAL SHEETS	SHEET NO.
90/94 2005-071 LS	COOK	39	11
STA. TO STA.		FED. ROAD DIST. NO. 1 ILLINOIS FED. AID PROJECT	
		60A77	



CTE | AECOM

REVISIONS	
NAME	DATE

ILLINOIS DEPARTMENT OF TRANSPORTATION  
F.A.I. 90/94 (DAN RYAN EXPRESSWAY)  
63RD STREET GATEWAY LANDSCAPING AND IRRIGATION  
SURVEY TIES AND CONTROL POINTS

SCALE: 1"=30'  
DATE: MAY 02, 2008

DRAWN BY: MRK  
CHECKED BY: JAL

I:\projects\90\94\63rd\63rd\_gateway\1176016\_07.dwg 03:49:13 PM