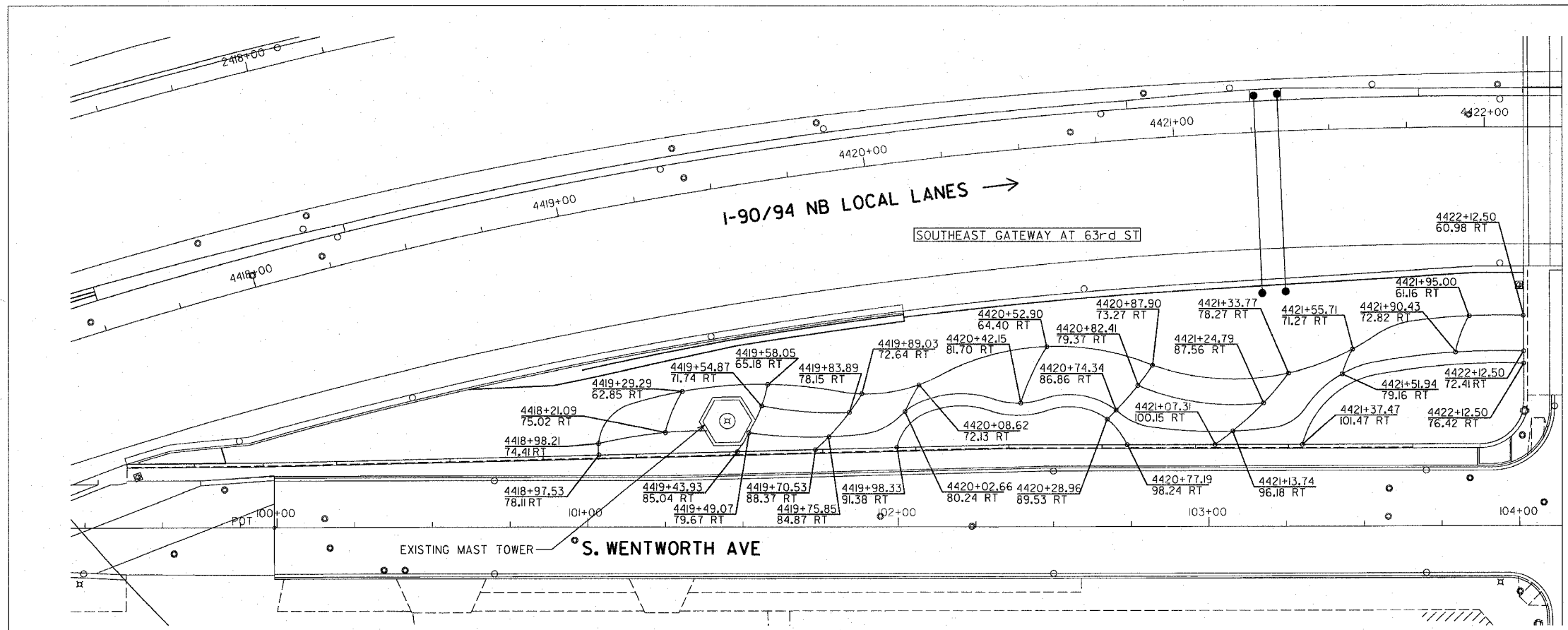
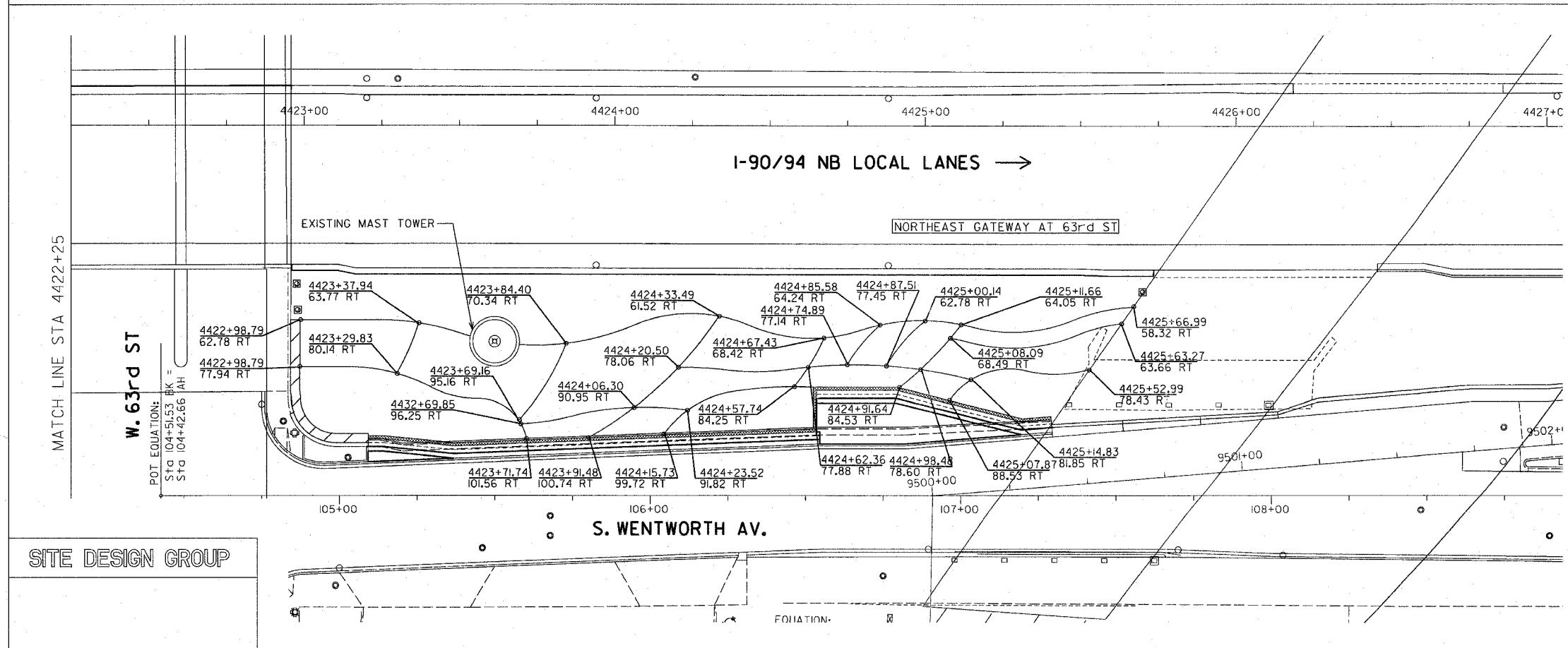


F.A.I. RTE.	SECTION	COUNTY	TOTAL SHEETS	SHEET NO.
90/94	2005-071LS	COOK	39	27
STA. 4418+50		TO STA. 4427+05		
FED. ROAD DIST. NO. 1	ILLINOIS	FED. AID PROJECT		
60A77				



MATCH LINE STA 4422+25
W. 63rd ST

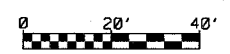
NOTE: THE LOCATION OF ALL PLANT MATERIAL SHALL BE STAKED BY CONTRACTOR FOR APPROVAL BY ENGINEER IN FIELD, PRIOR TO INSTALLATION. INDIVIDUAL TREES SHALL BE STAKED WITH IDENTITIES WRITTEN ON STAKES. SHRUB AND PERENNIAL BEDS SHALL BE OUTLINED WITH STAKES AND PAINTED LINES.



MATCH LINE STA 4422+25

W. 63rd ST

POT. EQUATION:
STG 104+51.53 BK =
STG 104+42.66 AH



SITE DESIGN GROUP

REVISIONS	
NAME	DATE

ILLINOIS DEPARTMENT OF TRANSPORTATION
F.A.I. 90/94 (DAN RYAN EXPRESSWAY)
63RD STREET GATEWAY LANDSCAPE AND IRRIGATION
PLANTING BED LAYOUT PLANS

SCALE: 1"=20'
DATE: May 2, 2008
DRAWN BY: EM
CHECKED BY: JO

DATE\$