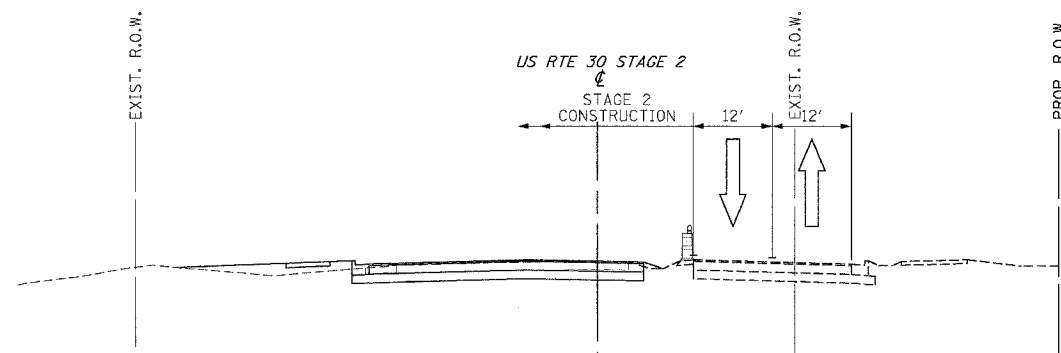
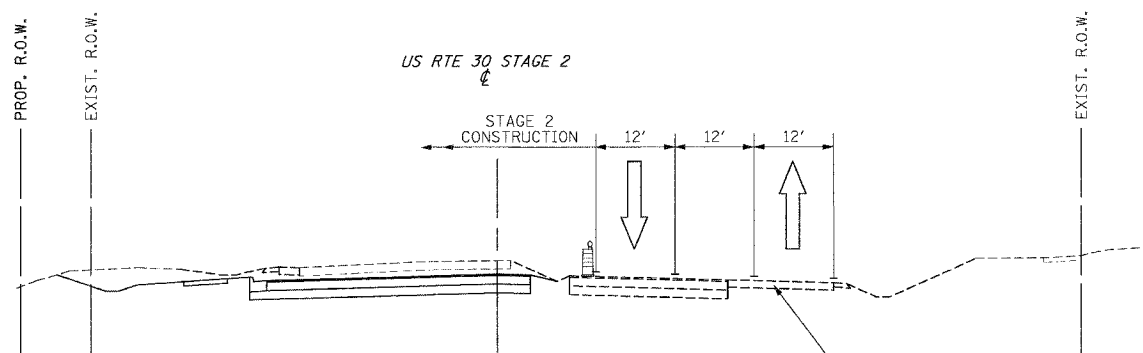


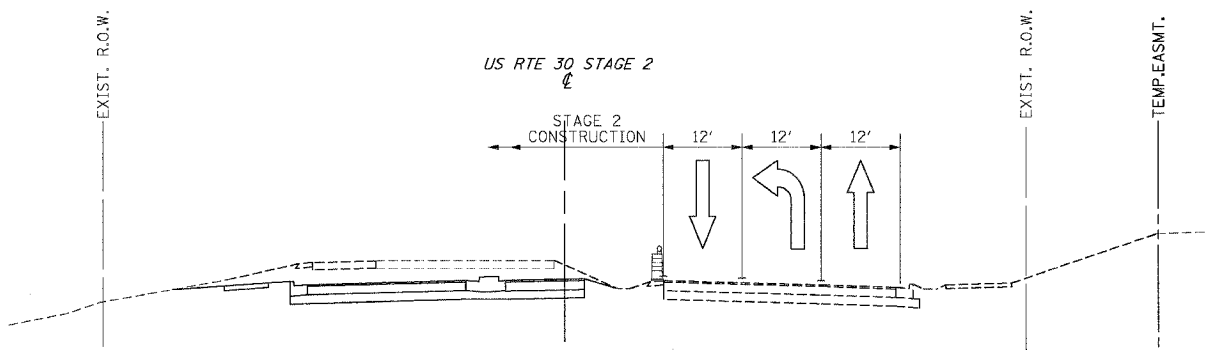
F.A.P. NO.	SECTION	COUNTY	TOTAL SHEETS	SHEET NO.
353	12R - 4	WILL	199	46
STA.		TO STA.		
FED. ROAD DIST. NO.	ILLINOIS	FED. AID PROJECT		



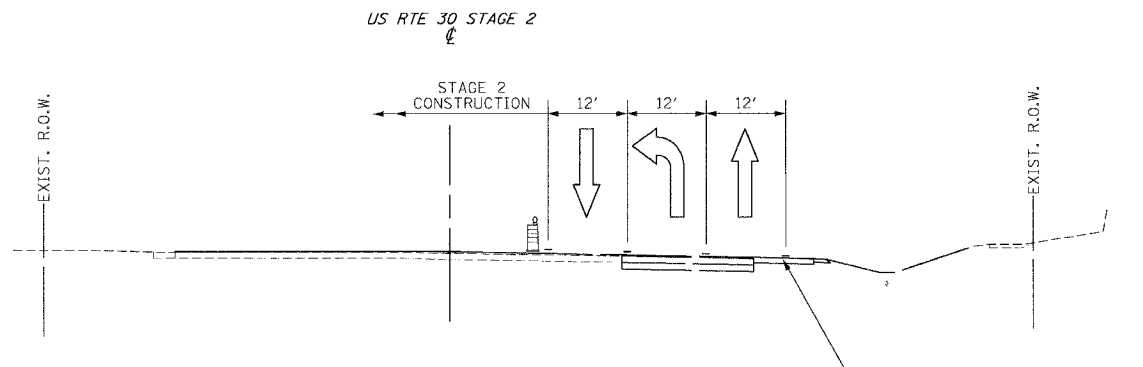
US ROUTE 30
STA. 600+00 TO STA. 609+82.5



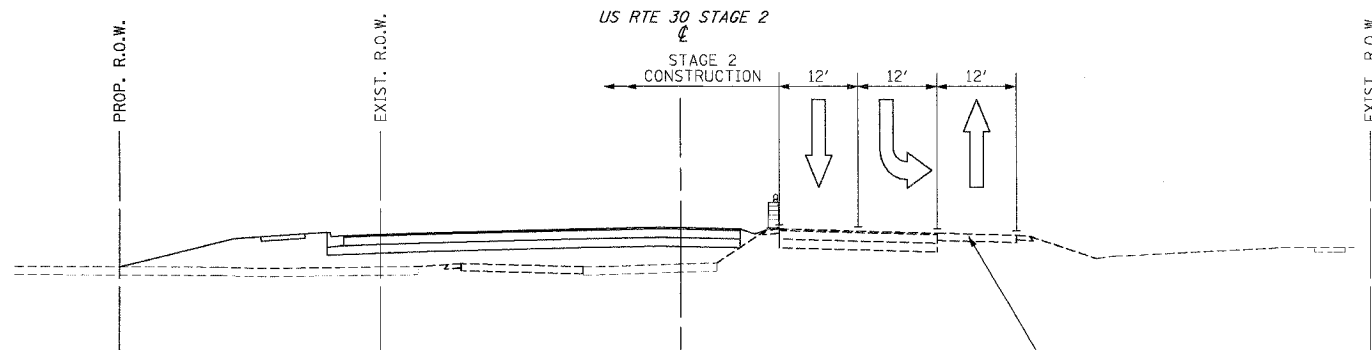
US ROUTE 30
STA. 619+86.1 TO STA. 624+22.8



US ROUTE 30
STA. 609+82.5 TO STA. 616+10.0



US ROUTE 30
STA. 624+72.8 TO STA. 628+00.0



US ROUTE 30
STA. 616+10 TO STA. 619+86.1

REVISIONS	
NAME	DATE

ILLINOIS DEPARTMENT OF TRANSPORTATION
MAINTENANCE OF TRAFFIC
STAGE 2
U.S. RTE. 30 (LINCOLN HIGHWAY)

SCALE : 1" = 50'
DATE : 03/21/2008
DRAWN BY : BEC
CHECKED BY :