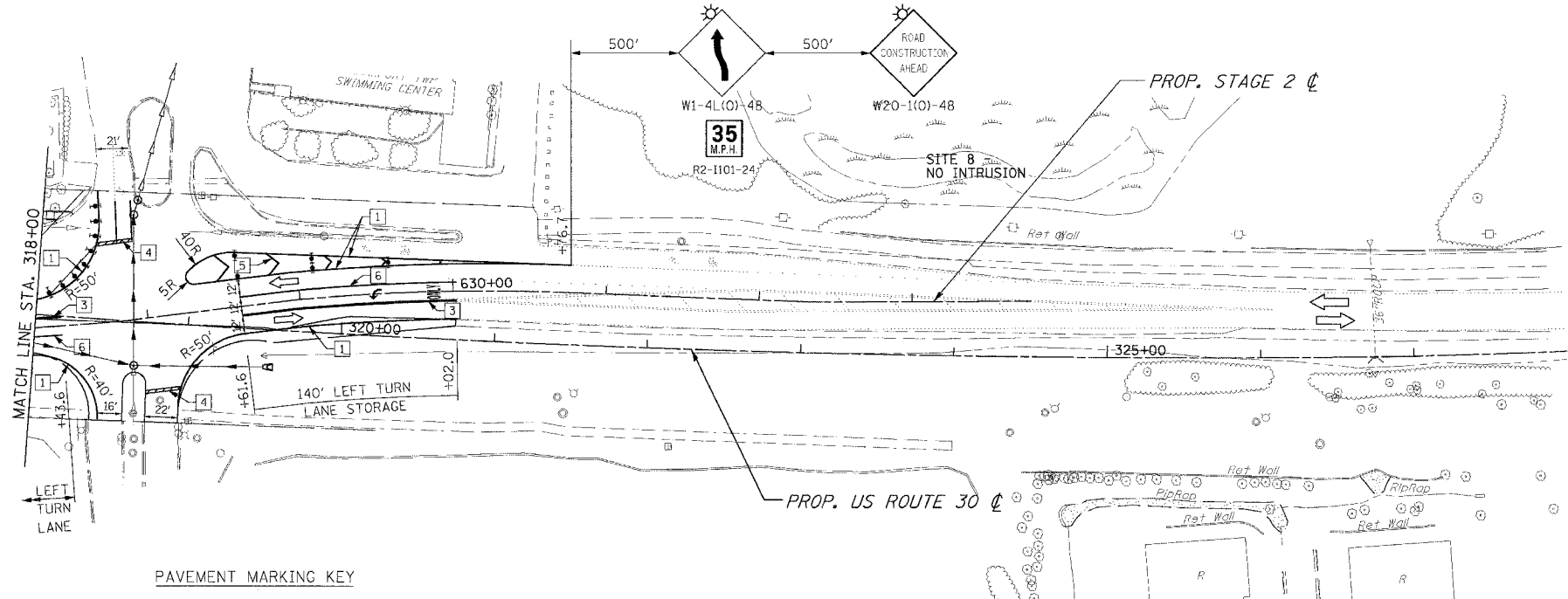
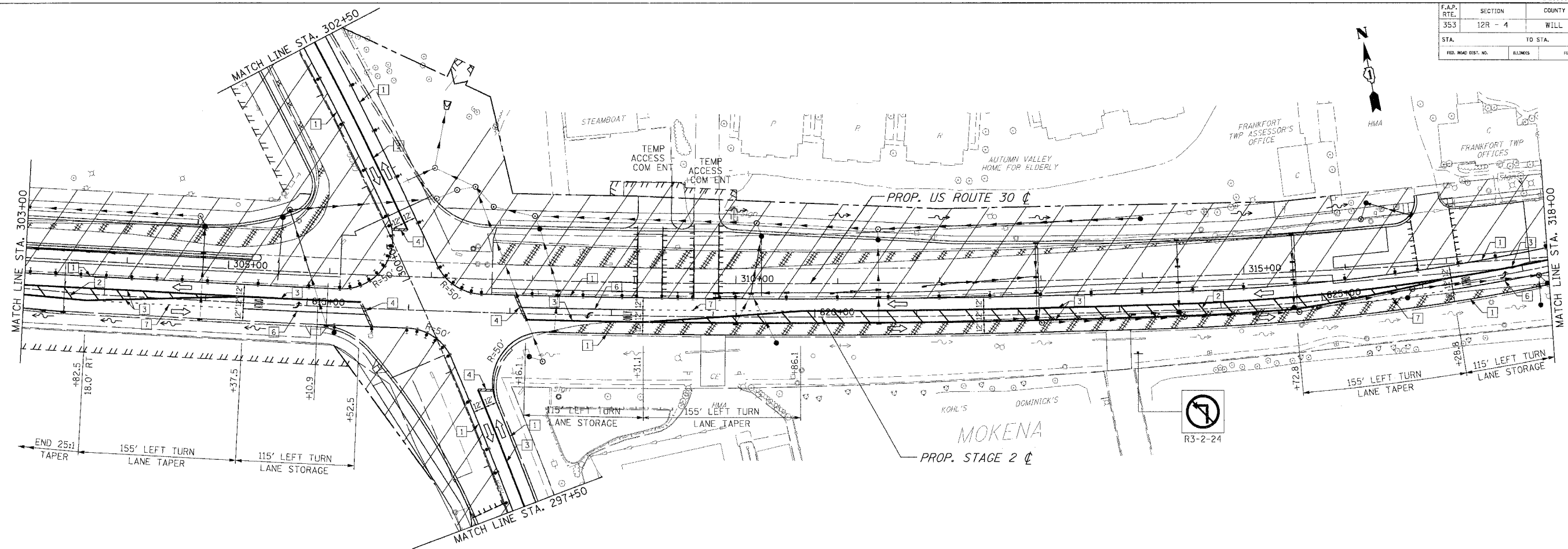


F.A.P. RTE.	SECTION	COUNTY	TOTAL SHEETS	SHEET NO.
353	12R - 4	WILL	199	49
STA.	TO STA.			
FED. ROAD DIST. NO.	ELLINGS	FED. AID PROJECT		



- LEGEND**
- [] TEMPORARY PAVEMENT
 - [X] TEMPORARY PAVEMENT CONSTRUCTED IN PRE-STAGE1
 - [X] TEMPORARY PAVEMENT CONSTRUCTED IN STAGE1
 - [X] CONSTRUCTION ZONE
 - [X] TYPE II BARRICADE, DRUM OR VERTICAL BARRICADE WITH STEADY BURN MONODIRECTIONAL LIGHT
 - [X] 50' C-C ON TANGENT
 - [X] 25' C-C ON TAPER
 - [X] 10' C-C ON CURVES
 - [>] DIRECTION OF TRAFFIC FLOW
 - [] SIGN
 - [] TYPE III BARRICADE WITH FLASHING LIGHTS
 - (XX) TEMPORARY STRUCTURE NUMBER
 - (XX) TEMPORARY PIPE NUMBER

- PAVEMENT MARKING KEY**
- 1 4" SOLID - WHITE
 - 2 12" SOLID - YELLOW @ 20' C-C (5 MIN.)
 - 3 4" SOLID - YELLOW @ 11" C-C
 - 4 24" STOP BAR - WHITE
 - 5 12" SOLID - WHITE
 - 6 6" SOLID - WHITE
 - 7 4" SOLID - WHITE (2' DASH - 6' SKIP)

REVISIONS		ILLINOIS DEPARTMENT OF TRANSPORTATION
NAME	DATE	
		MAINTENANCE OF TRAFFIC STAGE 2 U.S. RTE. 30 (LINCOLN HIGHWAY) STA. 303+00 TO STA. 331+00 SCALE : 1" = 50' DRAWN BY : BAE DATE : 03/21/2008 CHECKED BY : GB