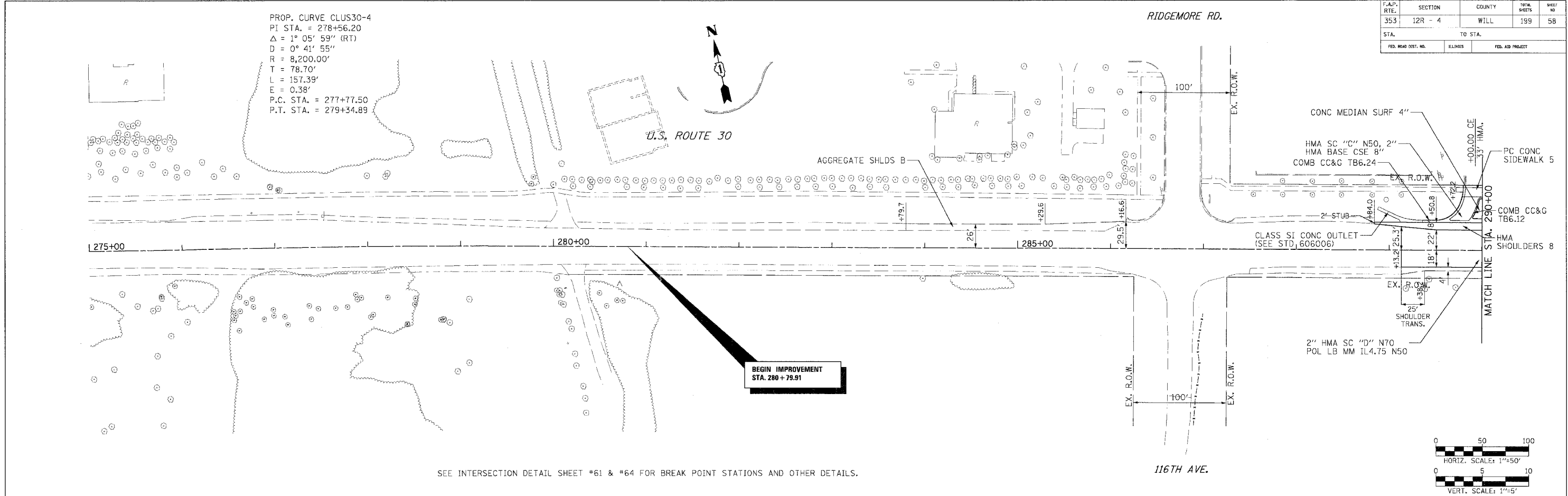


F.A.P. RTE.	SECTION	COUNTY	TOTAL SHEETS	SHEET NO.
353	12R - 4	WILL	199	58
STA.		TO STA.		
FED. ROAD DIST. NO.		ELLIPSES		FED. AID PROJECT



PROP. CURVE CLUS30-4
 PI STA. = 278+56.20
 $\Delta = 1^\circ 05' 59''$ (RT)
 $D = 0^\circ 41' 55''$
 $R = 8,200.00'$
 $T = 78.70'$
 $L = 157.39'$
 $E = 0.38'$
 P.C. STA. = 277+77.50
 P.T. STA. = 279+34.89

**BEGIN IMPROVEMENT
 STA. 280+79.91**

SEE INTERSECTION DETAIL SHEET #61 & #64 FOR BREAK POINT STATIONS AND OTHER DETAILS.

