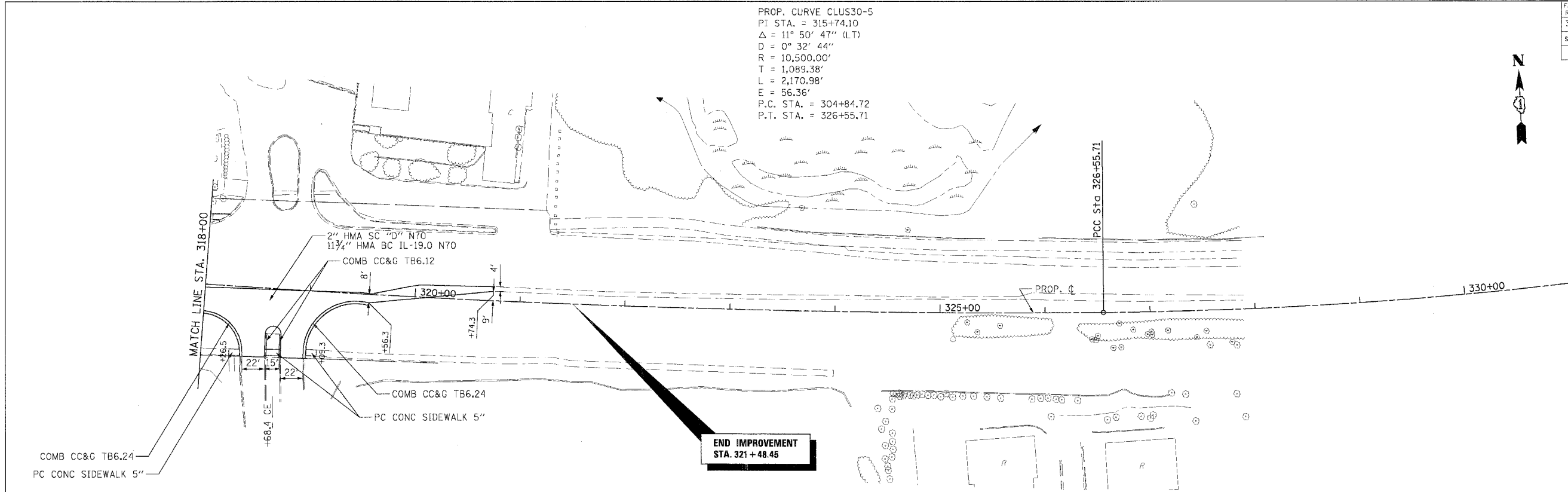


F.A.P. RTE.	SECTION	COUNTY	TOTAL SHEETS	SHEET NO.
353	12R - 4	WILL	199	61
STA.	TO STA.			
FED. ROAD DIST. NO.	S.L. NO.	FED. AID PROJECT		



PROP. CURVE CLUS30-5
 PI STA. = 315+74.10
 $\Delta = 11^\circ 50' 47''$ (LT)
 $D = 0^\circ 32' 44''$
 $R = 10,500.00'$
 $T = 1,089.38'$
 $L = 2,170.98'$
 $E = 56.36'$
 P.C. STA. = 304+84.72
 P.T. STA. = 326+55.71

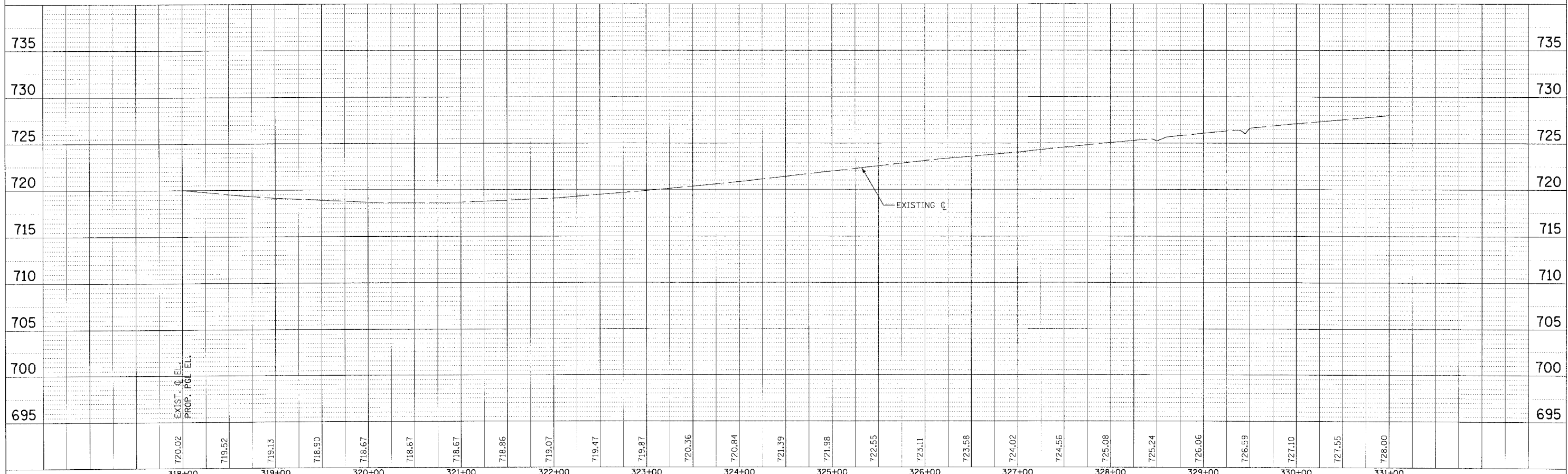
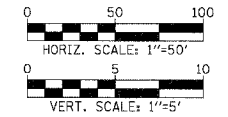
PROP. CURVE CLUS30-6
 PI STA. = 339+67.40
 $\Delta = 36^\circ 18' 40''$ (LT)
 $D = 1^\circ 25' 57''$
 $R = 3,999.99'$
 $T = 1,311.69'$
 $L = 2,534.98'$
 $E = 209.58'$
 P.C. STA. = 326+55.71
 P.T. STA. = 351+90.69



**END IMPROVEMENT
 STA. 321+48.45**

SEE INTERSECTION DETAIL SHEET #63 FOR BREAK POINT STATIONS AND OTHER DETAILS.

SETTLERS POND DR.



720.02	719.52	719.13	718.90	718.67	718.67	718.67	718.86	719.07	719.47	719.87	720.36	720.84	721.39	721.98	722.55	723.11	723.58	724.02	724.56	725.08	725.24	725.06	726.59	727.10	727.55	728.00	
318+00	319+00	320+00	321+00	322+00	323+00	324+00	325+00	326+00	327+00	328+00	329+00	330+00	331+00														

