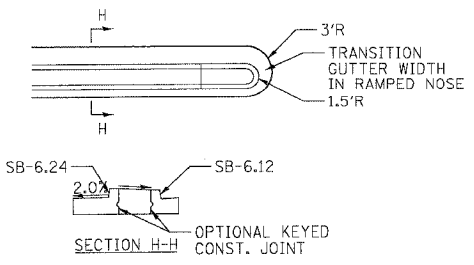
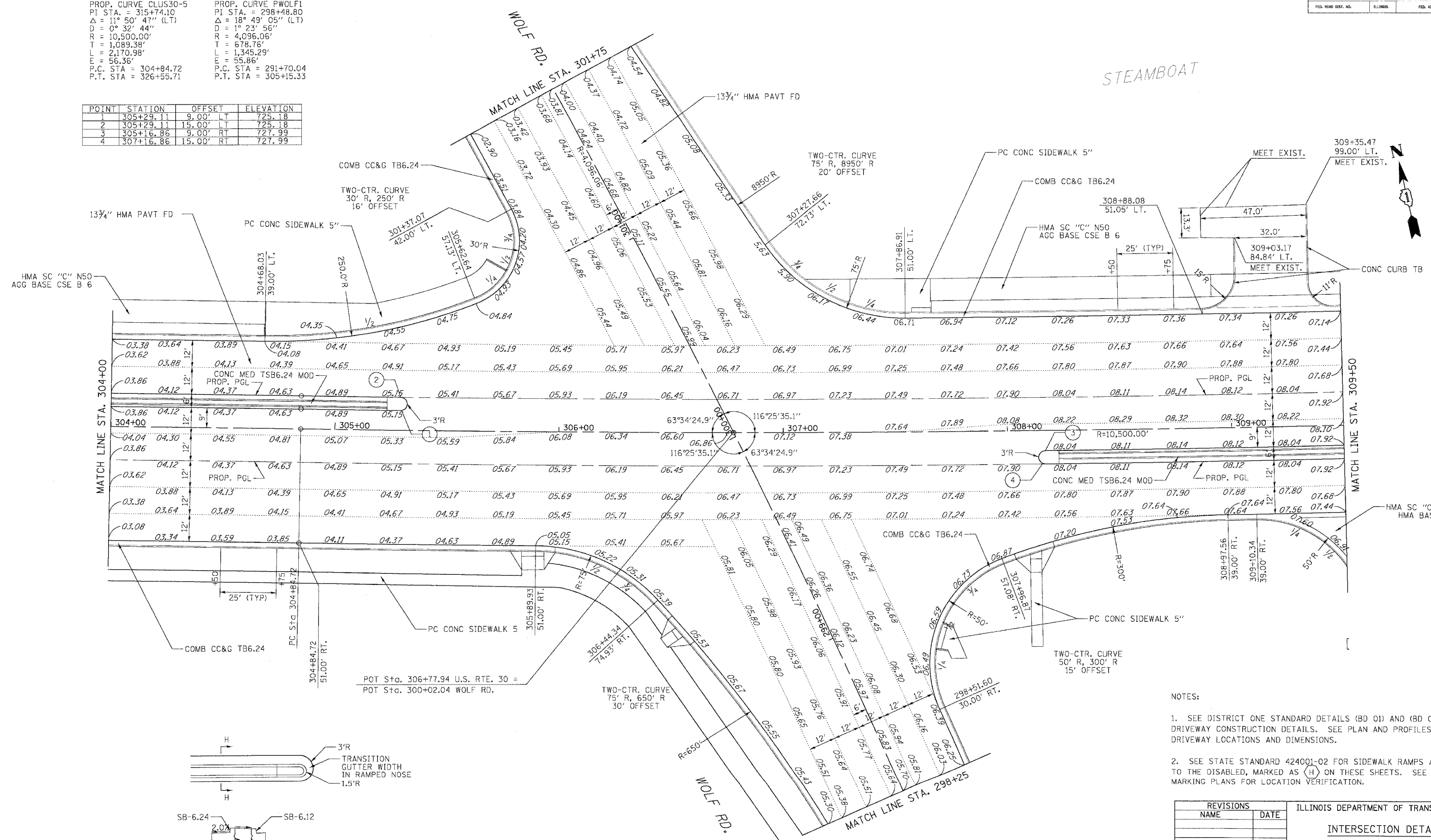


F.A.P. RTE.	SECTION	COUNTY	TOTAL SHEETS	SHEET NO.
353	(12&13)	WILL.	199	71
STA.		TO STA.		
FED. ROAD DIST. NO.		ILLINOIS	FED. AID PROJECT	

PROP. CURVE CLUS30-5
 PI STA. = 315+74.10
 Δ = 11° 50' 47" (LT)
 D = 0° 32' 44"
 R = 10,500.00'
 T = 1,089.38'
 L = 2,170.98'
 E = 56.36'
 P.C. STA = 304+84.72
 P.T. STA = 326+55.71

PROP. CURVE PWOLF1
 PI STA. = 298+48.80
 Δ = 18° 49' 05" (LT)
 D = 1° 23' 56"
 R = 4,096.06'
 T = 678.76'
 L = 1,345.29'
 E = 55.86'
 P.C. STA = 291+70.04
 P.T. STA = 305+15.33

POINT	STATION	OFFSET	ELEVATION
1	305+29.11	9.00' LT	725.18
2	305+29.11	15.00' LT	725.18
3	305+16.86	9.00' RT	727.99
4	307+16.86	15.00' RT	727.99



CONCRETE MEDIAN, TYPE SB-6.24 (MODIFIED)
 SEE STATE HIGHWAY STANDARD 606301 FOR ADDITIONAL DETAILS

NOTE: ADD 720.00 FT. TO ELEVATIONS SHOWN.

NOTES:

- SEE DISTRICT ONE STANDARD DETAILS (BD 01) AND (BD 02) FOR DRIVEWAY CONSTRUCTION DETAILS. SEE PLAN AND PROFILES FOR DRIVEWAY LOCATIONS AND DIMENSIONS.
- SEE STATE STANDARD 424001-02 FOR SIDEWALK RAMPS ACCESSIBLE TO THE DISABLED, MARKED AS (H) ON THESE SHEETS. SEE PAVEMENT MARKING PLANS FOR LOCATION VERIFICATION.

REVISIONS	
NAME	DATE

ILLINOIS DEPARTMENT OF TRANSPORTATION
INTERSECTION DETAILS
 U.S. RTE. 30 (LINCOLN HIGHWAY)
 & WOLF ROAD

SCALE : 1" = 20'
 DATE : 03/21/2008
 DRAWN BY : BEC
 CHECKED BY : G.B.