

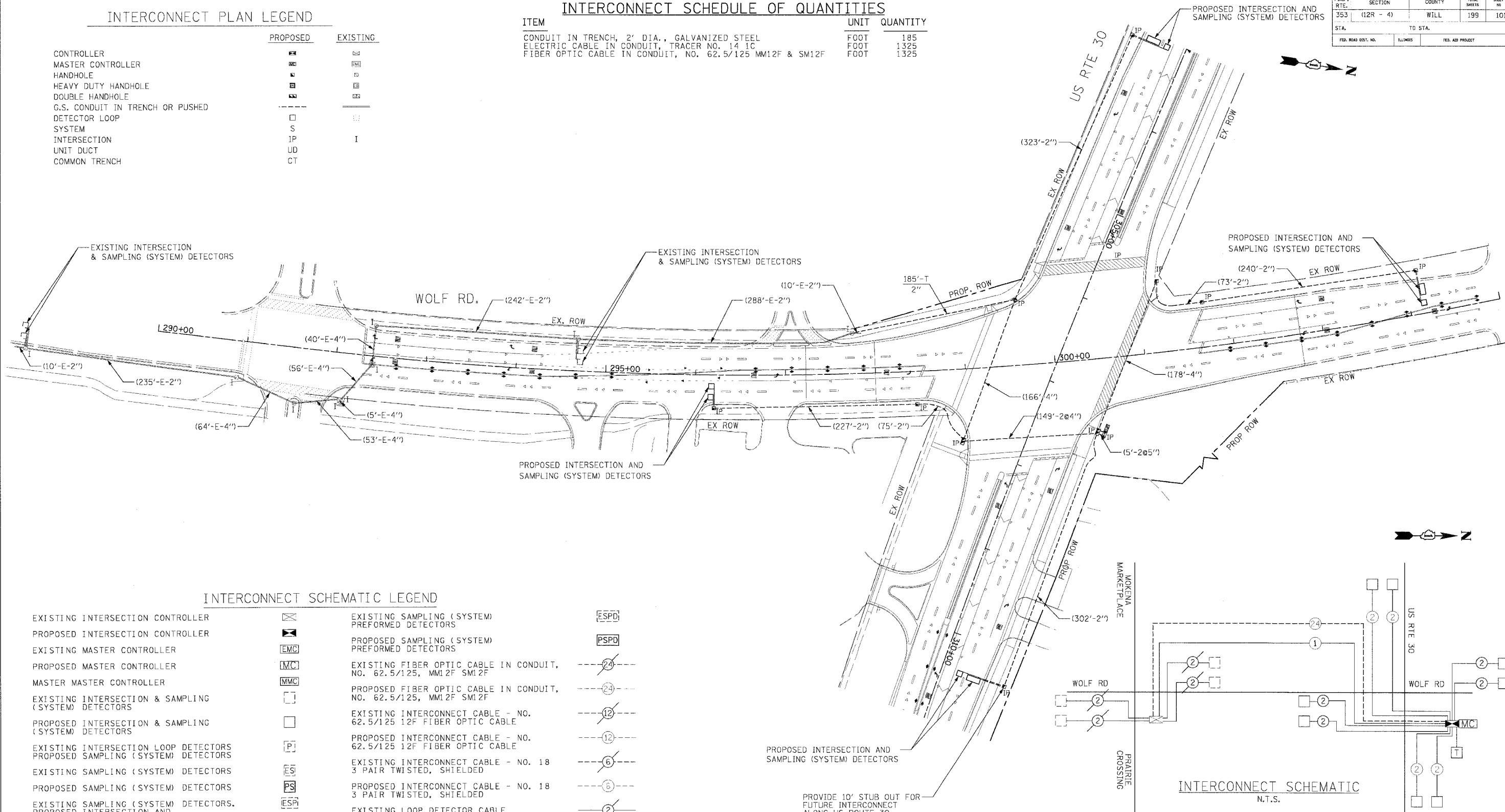
F.A.P. RTE.	SECTION	COUNTY	TOTAL SHEETS	SHEET NO.
353	(12R - 4)	WILL	199	101
STA.	TO STA.			
FED. ROAD DIST. NO.	ILLINOIS	FED. AID PROJECT		

INTERCONNECT PLAN LEGEND

	PROPOSED	EXISTING
CONTROLLER	☒	☒
MASTER CONTROLLER	☒	☒
HANDHOLE	☒	☒
HEAVY DUTY HANDHOLE	☒	☒
DOUBLE HANDHOLE	☒	☒
G.S. CONDUIT IN TRENCH OR PUSHED	---	---
DETECTOR LOOP SYSTEM	□	□
INTERSECTION	S	I
UNIT DUCT	IP	I
COMMON TRENCH	UD	CT

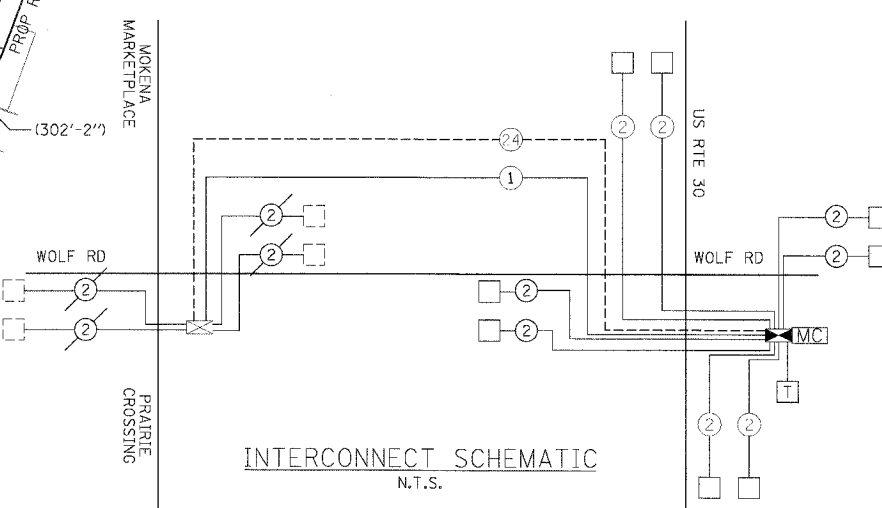
INTERCONNECT SCHEDULE OF QUANTITIES

ITEM	UNIT	QUANTITY
CONDUIT IN TRENCH, 2" DIA., GALVANIZED STEEL	FOOT	185
ELECTRIC CABLE IN CONDUIT, TRACER NO. 14 1C	FOOT	1325
FIBER OPTIC CABLE IN CONDUIT, NO. 62.5/125 MM12F & SM12F	FOOT	1325



INTERCONNECT SCHEMATIC LEGEND

EXISTING INTERSECTION CONTROLLER	☒	EXISTING SAMPLING (SYSTEM) PREFORMED DETECTORS	ESPD
PROPOSED INTERSECTION CONTROLLER	☒	PROPOSED SAMPLING (SYSTEM) PREFORMED DETECTORS	PSPD
EXISTING MASTER CONTROLLER	EMC	EXISTING FIBER OPTIC CABLE IN CONDUIT, NO. 62.5/125, MM12F SM12F	24
PROPOSED MASTER CONTROLLER	IMC	PROPOSED FIBER OPTIC CABLE IN CONDUIT, NO. 62.5/125, MM12F SM12F	24
MASTER MASTER CONTROLLER	MMC	EXISTING INTERCONNECT CABLE - NO. 62.5/125 12F FIBER OPTIC CABLE	12
EXISTING INTERSECTION & SAMPLING (SYSTEM) DETECTORS	□	PROPOSED INTERCONNECT CABLE - NO. 62.5/125 12F FIBER OPTIC CABLE	12
PROPOSED INTERSECTION & SAMPLING (SYSTEM) DETECTORS	□	EXISTING INTERCONNECT CABLE - NO. 18 3 PAIR TWISTED, SHIELDED	6
EXISTING INTERSECTION LOOP DETECTORS	PI	PROPOSED INTERCONNECT CABLE - NO. 18 3 PAIR TWISTED, SHIELDED	6
PROPOSED SAMPLING (SYSTEM) DETECTORS	ES	EXISTING LOOP DETECTOR CABLE 2/C TWISTED, SHIELDED	2
EXISTING SAMPLING (SYSTEM) DETECTORS	PS	PROPOSED LOOP DETECTOR CABLE 2/C TWISTED, SHIELDED	2
PROPOSED SAMPLING (SYSTEM) DETECTORS	ES	EXISTING ELECTRIC CABLE, 1/C (AS SPECIFIED)	1
EXISTING SAMPLING (SYSTEM) DETECTORS, PROPOSED INTERSECTION AND SAMPLING (SYSTEM) DETECTORS.	ESPS	PROPOSED ELECTRIC CABLE, 1/C (AS SPECIFIED)	1
EXISTING SAMPLING (SYSTEM) DETECTORS, PROPOSED SAMPLING (SYSTEM) DETECTORS.	ESPS	EXISTING TELEPHONE CONNECTION	T
EXISTING INTERSECTION & SAMPLING (SYSTEM) DETECTORS	PD	PROPOSED TELEPHONE CONNECTION	T
PROPOSED INTERSECTION & SAMPLING (SYSTEM) DETECTORS	PD		



REVISIONS		ILLINOIS DEPARTMENT OF TRANSPORTATION INTERCONNECT PLAN AND INTERCONNECT SCHEMATIC US RTE. 30 TO MOKENA MARKETPLACE/ PRAIRIE CROSSING
NAME	DATE	
		SCALE : 1" = NTS DATE : 03/21/2008 DRAWN BY : ZH DESIGNED BY : BAE CHECKED BY : GB

