

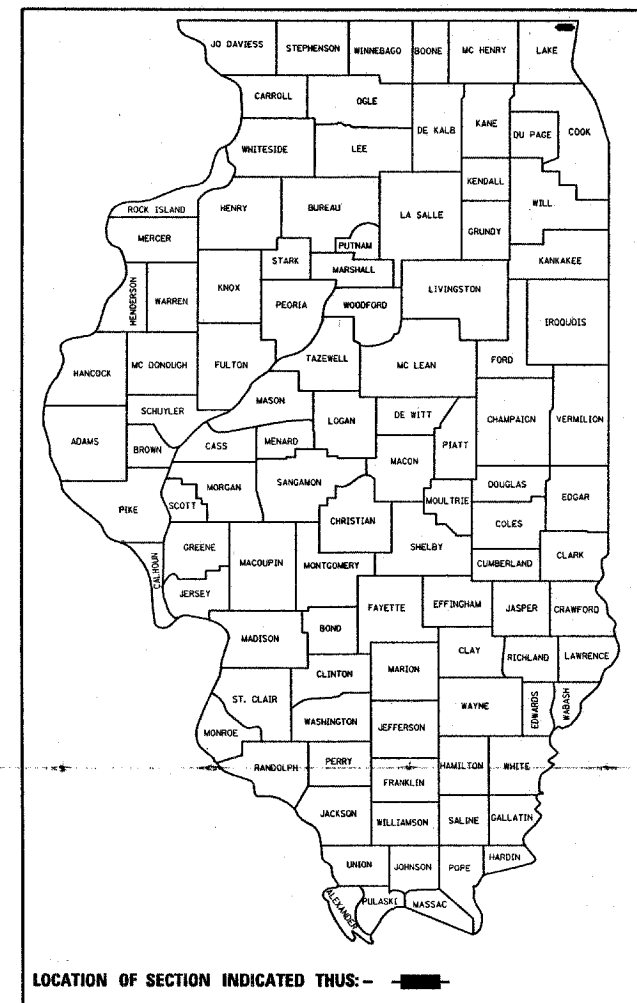
F.A.P. RTE.	SECTION	COUNTY	TOTAL SHEETS	SHEET NO.
303	136 RS-5	LAKE	23	1
FED. ROAD DIST. NO. 1		ILLINOIS	CONTRACT NO. 60E44	

STATE OF ILLINOIS
DEPARTMENT OF TRANSPORTATION
DIVISION OF HIGHWAYS

**PROPOSED
HIGHWAY PLANS**

F.A.P. ROUTE 303 / ILL 173 (ROSECRANS ROAD)
ILL 131 TO LEWIS AVENUE
SECTION: 136 RS-5
RESURFACING (MAINTENANCE)
PROJECT: *NHF-0303(040)*
LAKE COUNTY
C-91-376-08

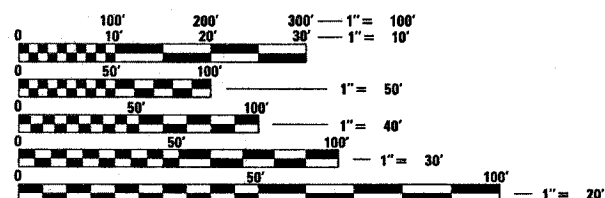
D-91-376-08



FOR INDEX OF SHEETS, SEE SHEET NO. 2

PROJECT IS LOCATED IN THE
CITY OF ZION

DISTRICT ONE DESIGN PLAN PREPARATION ENGINEER:
KEN ENG (847) 705-4247



FULL SIZE PLANS HAVE BEEN PREPARED USING STANDARD ENGINEERING SCALES. REDUCED SIZED PLANS WILL NOT CONFORM TO STANDARD SCALES. IN MAKING MEASUREMENTS ON REDUCED PLANS, THE ABOVE SCALES MAY BE USED.

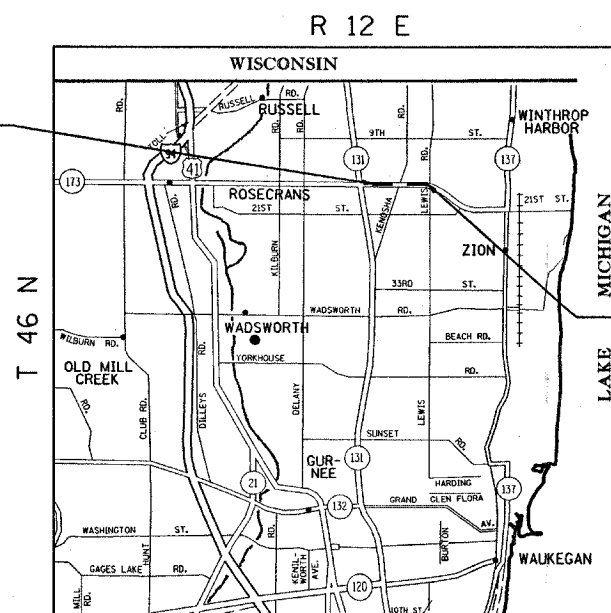
J.U.L.I.E.
JOINT UTILITY LOCATION INFORMATION FOR EXCAVATION
1-800-892-0123
OR 811

PROJECT ENGINEER: ANA ABREU
PROJECT MANAGER: KEN ENG

CONTRACT NO. 60E44

PROJECT BEGINS STA. 29+95

OMISSION
STA. 47+41 TO STA. 68+30



PROJECT ENDS STA. 90+33

TRAFFIC DATA
SPEED LIMIT: 45 MPH
2007 ADT: 10,900

GROSS LENGTH OF PROJECT = 6,038 FEET (1.14 MILES)
NET LENGTH OF PROJECT = 3,949 FEET (0.75 MILES)

STATE OF ILLINOIS
DEPARTMENT OF TRANSPORTATION
DIVISION OF HIGHWAYS

SUBMITTED MAY 15, 2008

Diana M. O'Keefe
DEPUTY DIRECTOR OF HIGHWAYS, REGION ENGINEER

June 27, 2008
Eric E. Harrel
INTERIM ENGINEER OF DESIGN AND ENVIRONMENT

June 27, 2008
Christine M. Reed
DIRECTOR OF HIGHWAYS, CHIEF ENGINEER

**PRINTED BY THE AUTHORITY
OF THE STATE OF ILLINOIS**