

F.A.P. RTE.	SECTION	COUNTY	TOTAL SHEETS	SHEET NO.
352	(E, M, D) RS-6	LAKE	21	1
FED. ROAD DIST. NO. 1	ILLINOIS	CONTRACT NO. 60E56		

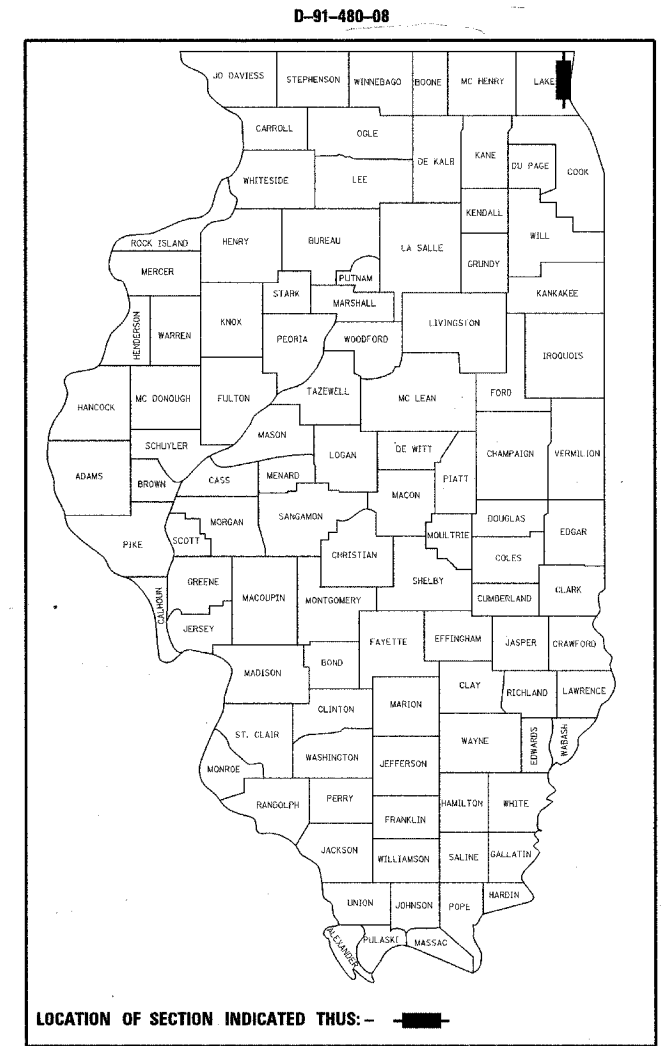
**STATE OF ILLINOIS
DEPARTMENT OF TRANSPORTATION
DIVISION OF HIGHWAYS**

**PROPOSED
HIGHWAY PLANS**

**FAP ROUTE 352 (IL. RTE. 137)
BLANCHARD RD. TO GREENWOOD AVE.
AND IL 137 TO JOE FAVERO DRIVE
SECTION (E, M, D) RS-6
PROJECT: NHF-0352(009)
RESURFACING (3P)
LAKE COUNTY
C-91-480-08**

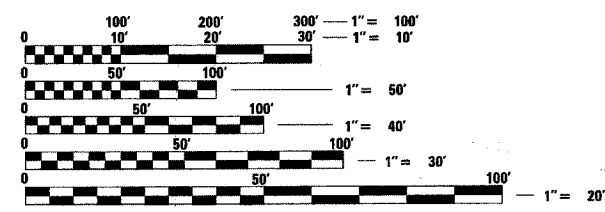
FOR INDEX OF SHEETS, SEE SHEET NO. 2

**PROJECT LOCATED IN
CITY OF WAUKEGAN**



LOCATION OF SECTION INDICATED THUS: - ■ -

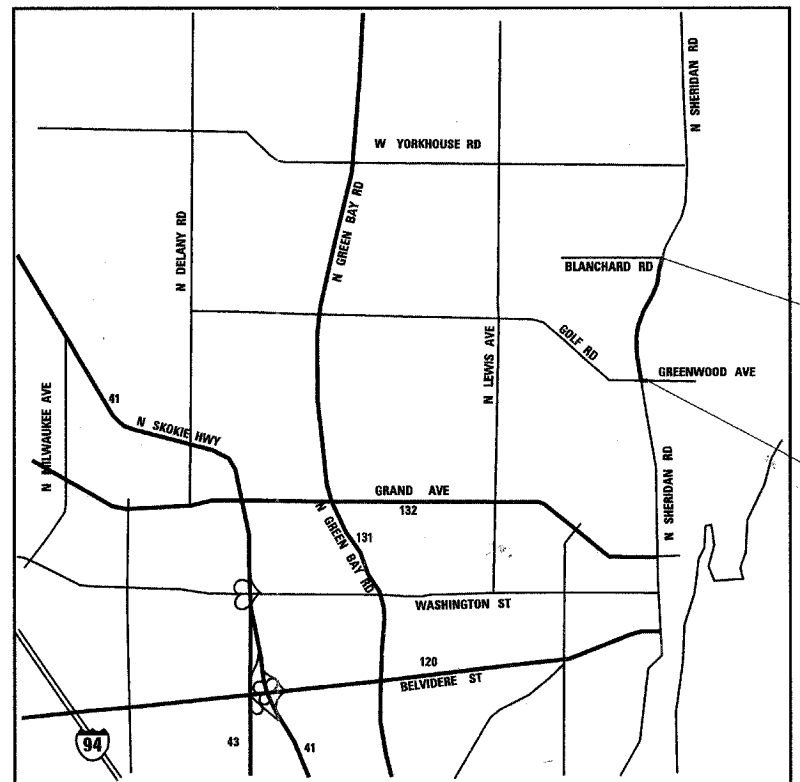
2006 ADT = 18,800 VEHICLES PER DAY
SPEED LIMIT = 40 MPH



FULL SIZE PLANS HAVE BEEN PREPARED USING STANDARD ENGINEERING SCALES. REDUCED SIZED PLANS WILL NOT CONFORM TO STANDARD SCALES. IN MAKING MEASUREMENTS ON REDUCED PLANS, THE ABOVE SCALES MAY BE USED.

J.U.L.I.E.
JOINT UTILITY LOCATION INFORMATION FOR EXCAVATION
1-800-892-0123
OR 811

NEWPORT TWP. C-91-480-08 BENTON TWP.



T 45 N | T 46 N



**PROJECT ENDS
SHERIDAN RD.
STA 71+27**

**PROJECT BEGINS
GREENWOOD AVE.
STA 22+04**

WARREN TWP. R 11 E | R 12 E WAUKEGAN TWP.
GROSS & NET LENGTH OF PROJECT = 6049 FT = 1.15 MILES

**LOCATION MAP
NOT TO SCALE**



William J. Vegiva 5-22-08
Expires: 11-30-07

**PROJECT ENGINEER: MICHELLE AQUINO (847) 705-4606
PROJECT MANAGER: LONG TRAN (847) 705-4232**

CONTRACT NO. 60E56

**STATE OF ILLINOIS
DEPARTMENT OF TRANSPORTATION
DIVISION OF HIGHWAYS**

SUBMITTED MAY 26 2008

Dianne M. O'Keefe
DEPUTY DIRECTOR OF HIGHWAYS, REGION ENGINEER

June 27, 2008
Eric E. Haran
ENGINEER OF DESIGN AND ENVIRONMENT

June 27, 2008
Christine M. Reed
DIRECTOR OF HIGHWAYS, CHIEF ENGINEER

rjngroup
Excellence through Ownership
200 West Front Street
Wheaton, IL 60187

**PRINTED BY THE AUTHORITY
OF THE STATE OF ILLINOIS**