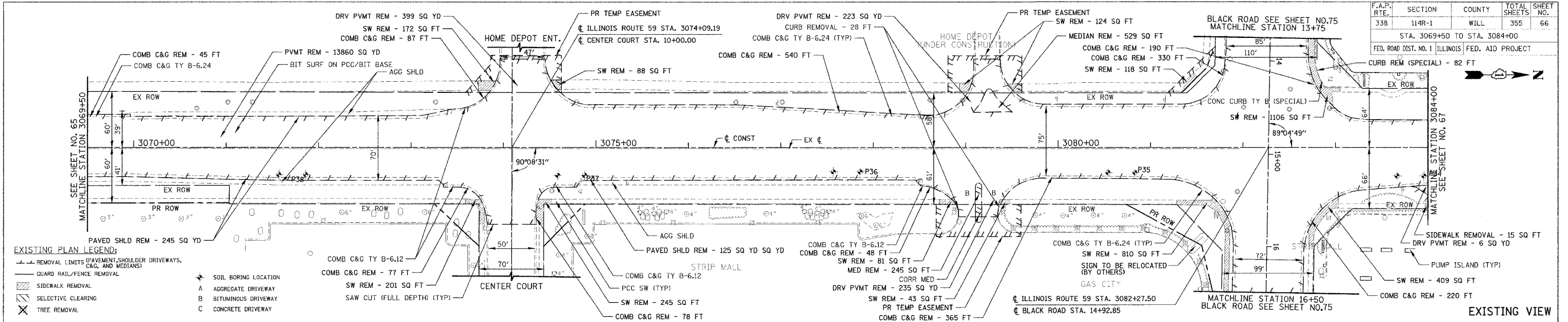
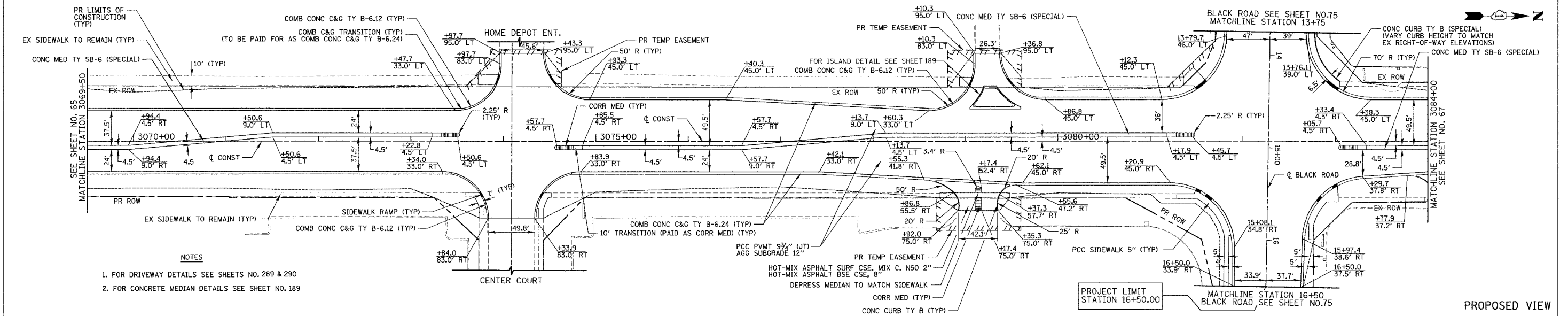


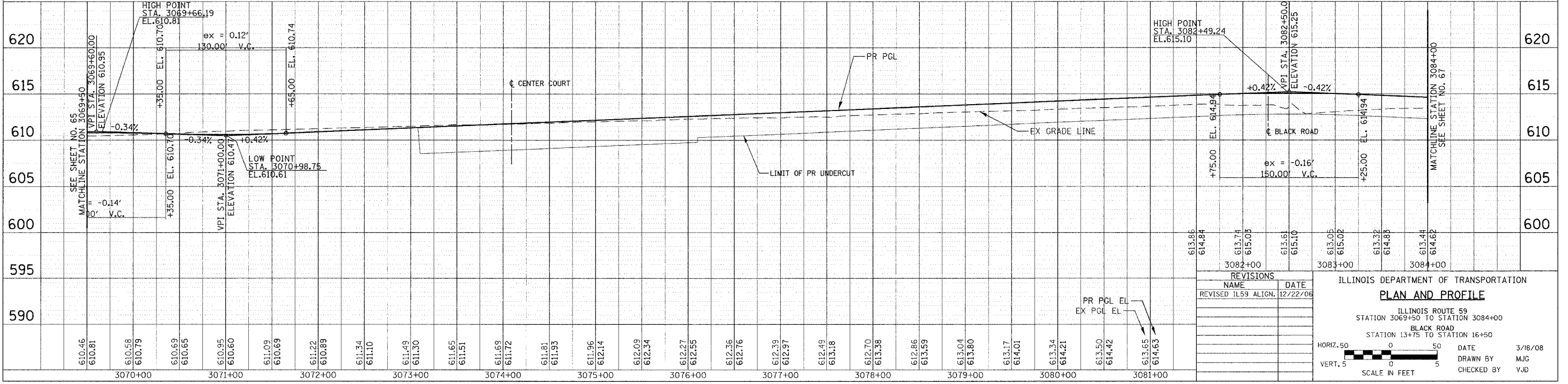
F.A.P. RTE.	SECTION	COUNTY	TOTAL SHEETS	SHEET NO.
338	114R-1	WILL	355	66
STA. 3069+50 TO STA. 3084+00				
FED. ROAD DIST. NO. 1 ILLINOIS FED. AID PROJECT				



- EXISTING PLAN LEGEND:**
- REMOVAL LIMITS (PAVEMENT, SHOULDER, DRIVEWAYS, C&G, AND MEDIANS)
 - GUARD RAIL/FENCE REMOVAL
 - SIDEWALK REMOVAL
 - SELECTIVE CLEARING
 - TREE REMOVAL
 - SOIL BORING LOCATION
 - A AGGREGATE DRIVEWAY
 - B BITUMINOUS DRIVEWAY
 - C CONCRETE DRIVEWAY



- NOTES**
- FOR DRIVEWAY DETAILS SEE SHEETS NO. 289 & 290
 - FOR CONCRETE MEDIAN DETAILS SEE SHEET NO. 189



NAME	DATE
REVISIONS	
REVISED IL59 ALIGN.	12/22/06

ILLINOIS DEPARTMENT OF TRANSPORTATION
PLAN AND PROFILE
 ILLINOIS ROUTE 59
 STATION 3069+50 TO STATION 3084+00
 BLACK ROAD
 STATION 13+75 TO STATION 16+50

HORIZ. 50
 VERT. 5

DATE 3/18/08
 DRAWN BY MJG
 CHECKED BY VJD