

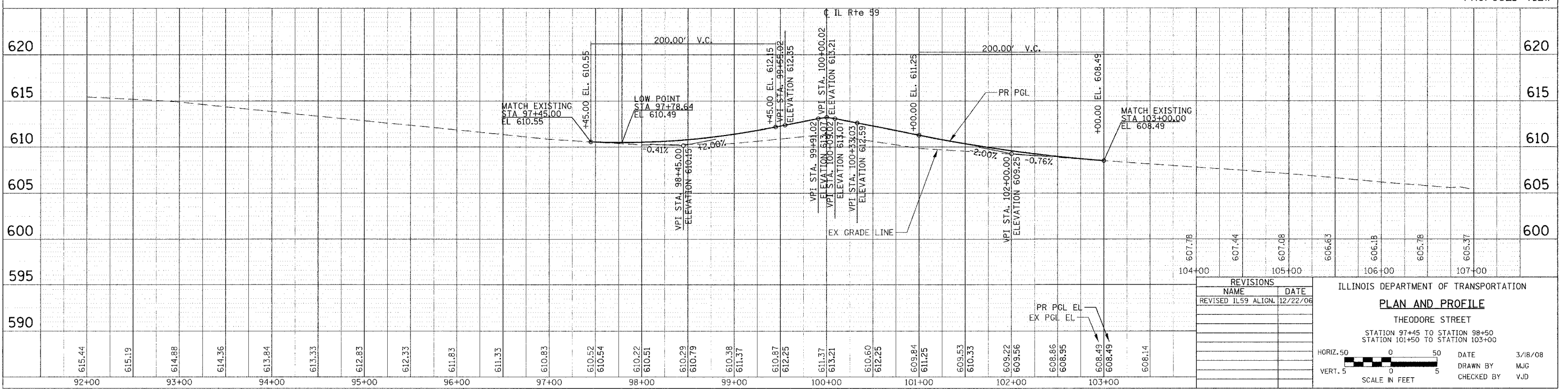
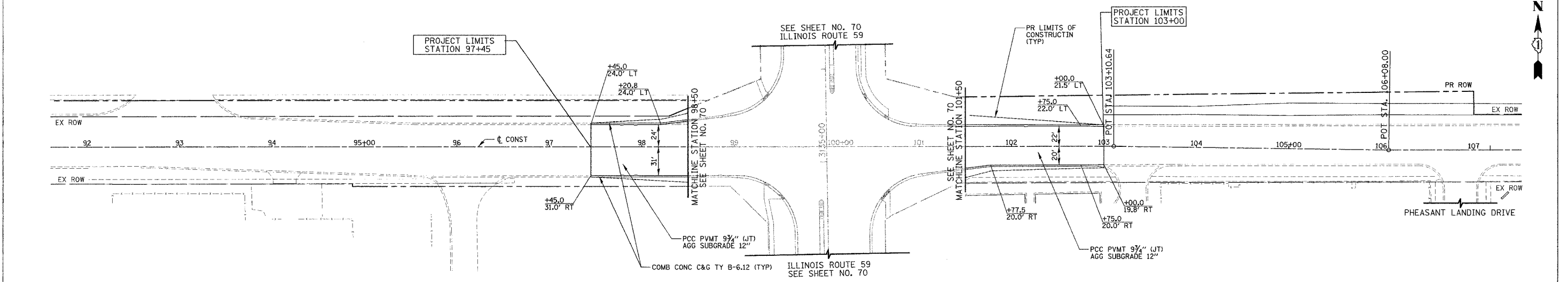
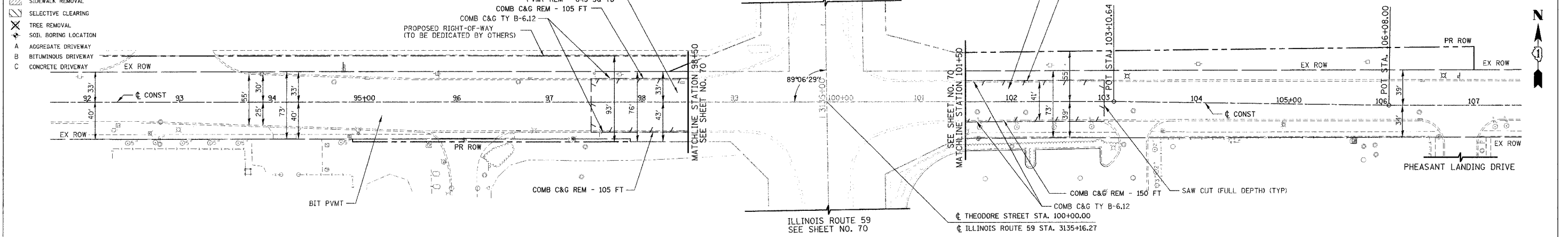
F.A.P. RTE.	SECTION	COUNTY	TOTAL SHEETS	SHEET NO.
338	114R-1	WILL	355	76

STA. 97+45 TO STA. 98+50  
 STA. 101+50 TO STA. 103+00  
 FED. ROAD DIST. NO. 1 ILLINOIS FED. AID PROJECT

**EXISTING PLAN LEGEND:**

- REMOVAL LIMITS (PAVEMENT, SHOULDER, DRIVEWAYS, C&G, AND MEDIANS)
- GUARD RAIL/FENCE REMOVAL
- ▨ SIDEWALK REMOVAL
- ▨ SELECTIVE CLEARING
- ✕ TREE REMOVAL
- SOIL BORING LOCATION
- A AGGREGATE DRIVEWAY
- B BITUMINOUS DRIVEWAY
- C CONCRETE DRIVEWAY

THE CONTRACTOR AND RESIDENT ENGINEER SHALL COORDINATE ACTIVITIES WITH IDOT PERMIT 1-T-07-0529 WHICH PERMITS IMPROVEMENTS AT THE NORTHWEST QUADRANT OF THEODORE STREET AND ILLINOIS ROUTE 59



PLAN	DATE

PROFILE	DATE