

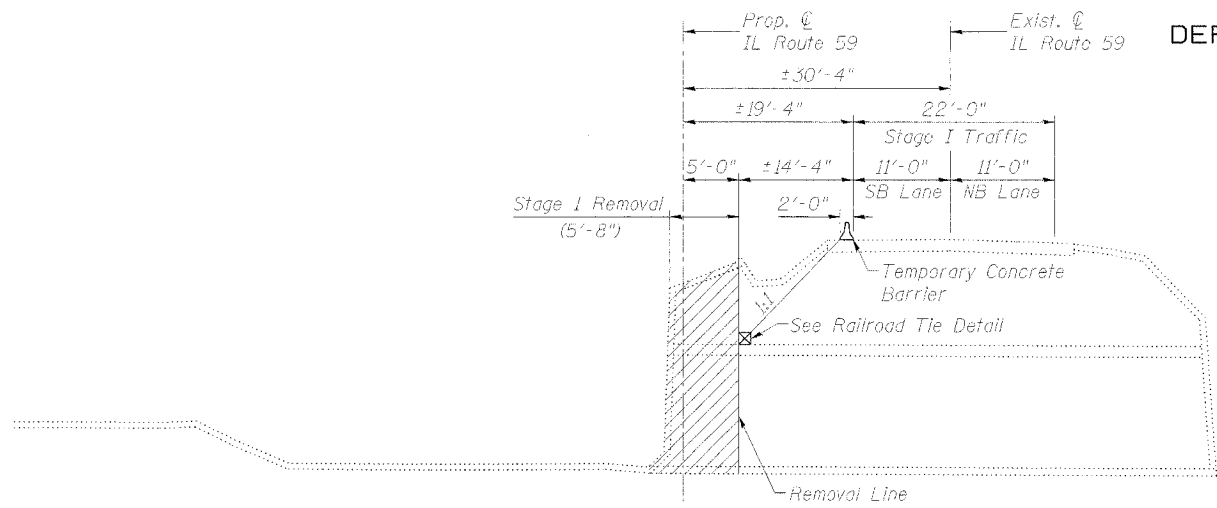
STATE OF ILLINOIS
DEPARTMENT OF TRANSPORTATION

ROUTE NO.	SECTION	COUNTY	TOTAL SHEETS	SHEET NO.
F.A.P. 338	114R-1	WILL	355	260
PLAN/ROAD DIST./M.I./	M. STATE	FED. AID PROJECT		

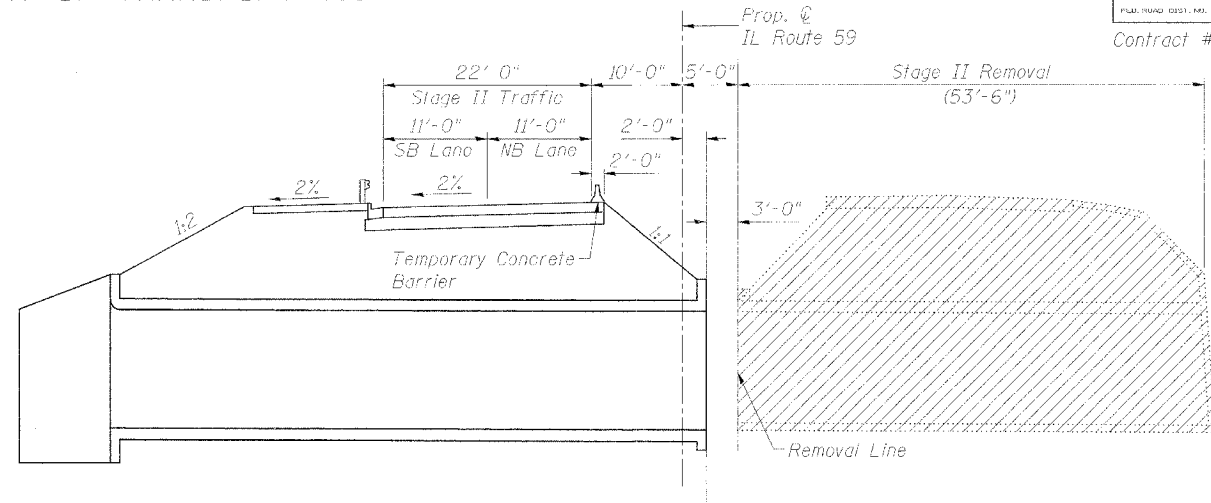
SHEET NO. 51-2

8 SHEETS

Contract # 62416

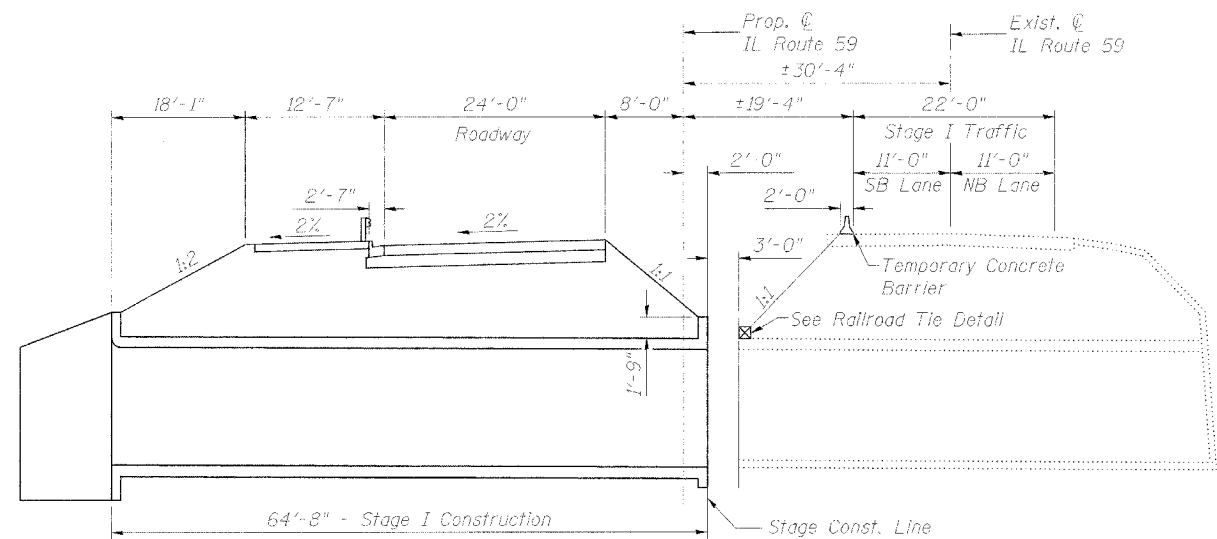


STAGE I REMOVAL
(Looking North)

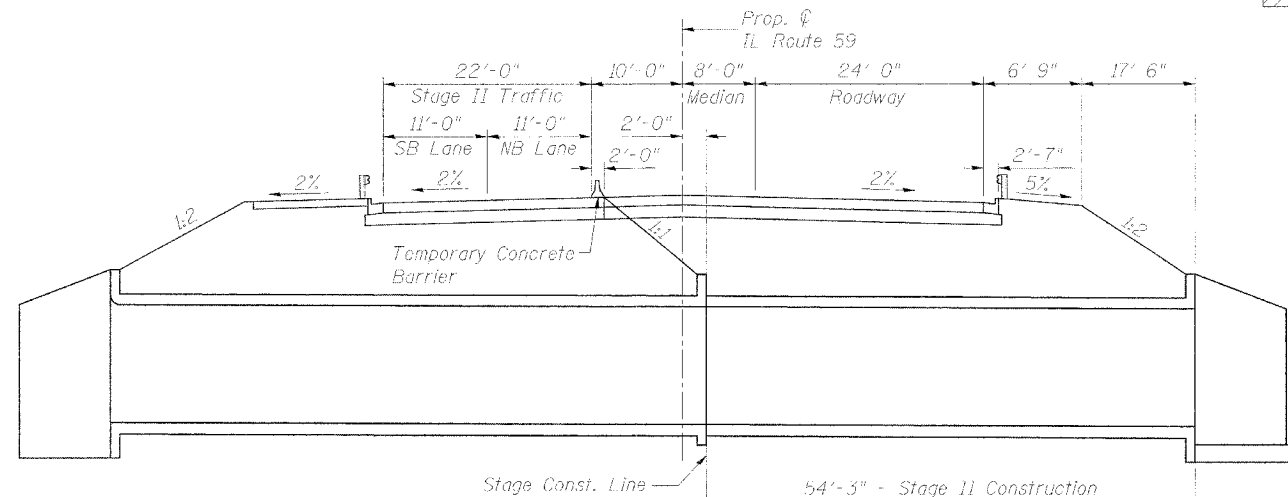


STAGE II REMOVAL
(Looking North)

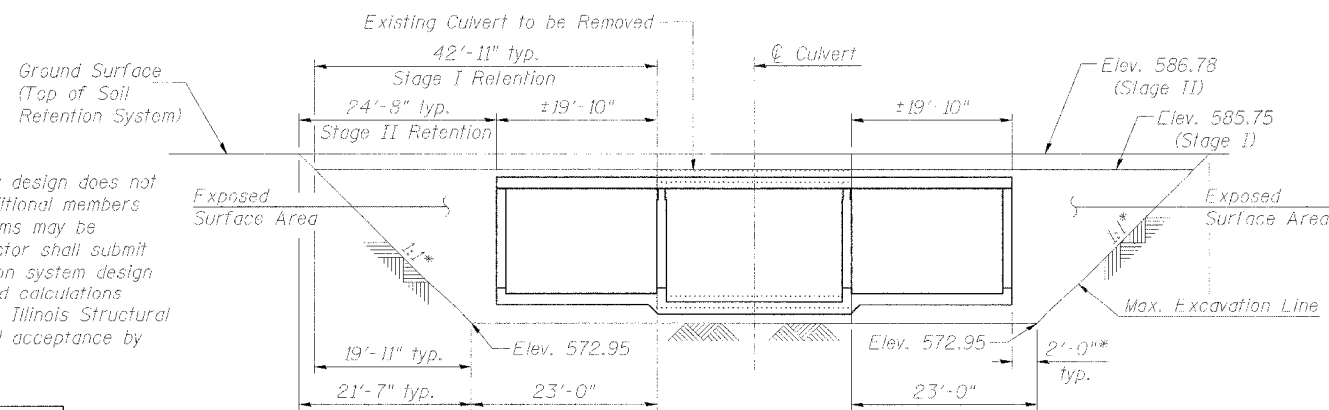
LEGEND
 Removal of Existing Culvert and Roadway



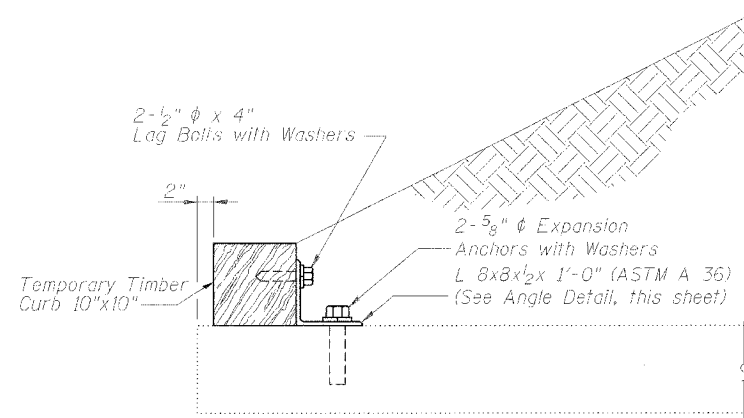
STAGE I CONSTRUCTION
(Looking North)



STAGE II CONSTRUCTION
(Looking North)

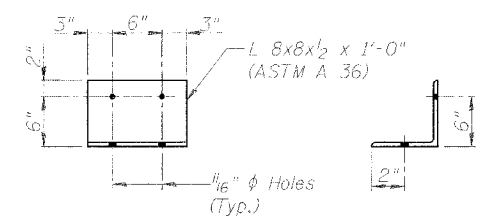


TEMPORARY SOIL RETENTION SYSTEM
Slope and Distances Shown Along Skew at Stage Construction Line



RAILROAD TIE DETAIL

The L 8x8x1/2 x 1'-0" and Temporary Timber shall not be removed until Stage I Construction has been completed.
Connect one (1) L 8x8x1/2 x 1'-0" to the top of existing culvert with two (2) expansion anchors placed in two (2) holes. Angles to be positioned near each end of all timber curbs, but the outside lag bolt shall be at least 6" from end of timber. Cost included with Concrete Box Culverts.



ANGLE DETAIL

A cantilever sheet piling design does not appear feasible and additional members or other retention systems may be necessary. The Contractor shall submit a temporary soil retention system design including plan details and calculations signed and sealed by an Illinois Structural Engineer for review and acceptance by the Engineer.

DESIGNED	SLC
CHECKED	MDS
DRAWN	MDS
CHECKED	SLC

CONSTRUCTION STAGING
IL ROUTE 59 OVER HAMMEL CREEK
F.A.P. ROUTE 338 SECTION 114R-1
WILL COUNTY
STATION 3041+91.63
STRUCTURE NO. 099-4660

TranSystems

8051 PLENUM/LEI DRIVE, SUITE 2025
SCHMIDT, IL 60175-5008
TEL (847) 625-9600
FAX (847) 625-5600

8/15/2013 8:11:56 AM G:\ch02\0602\structural\sheet\schommel.dwg

3/18/08